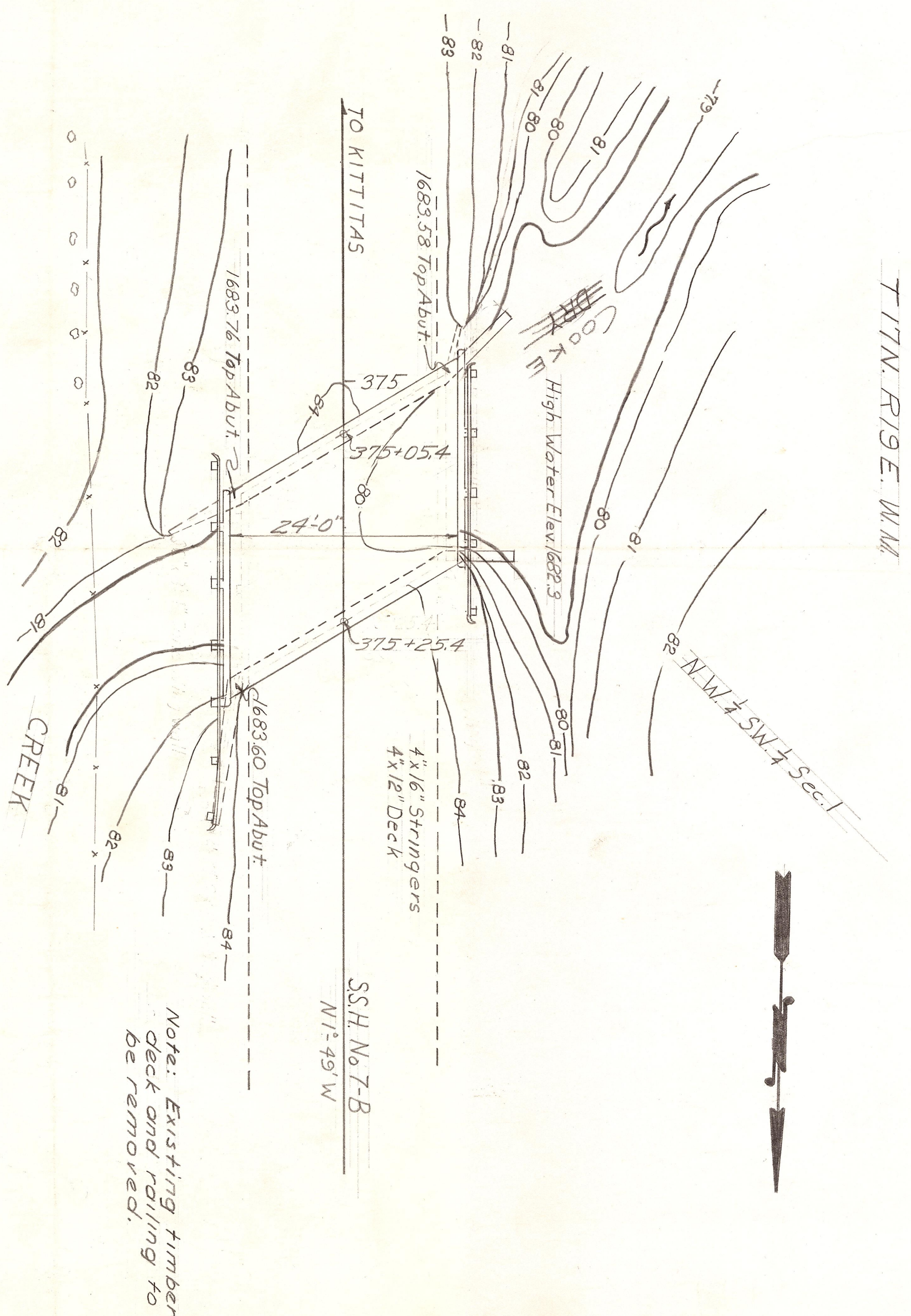
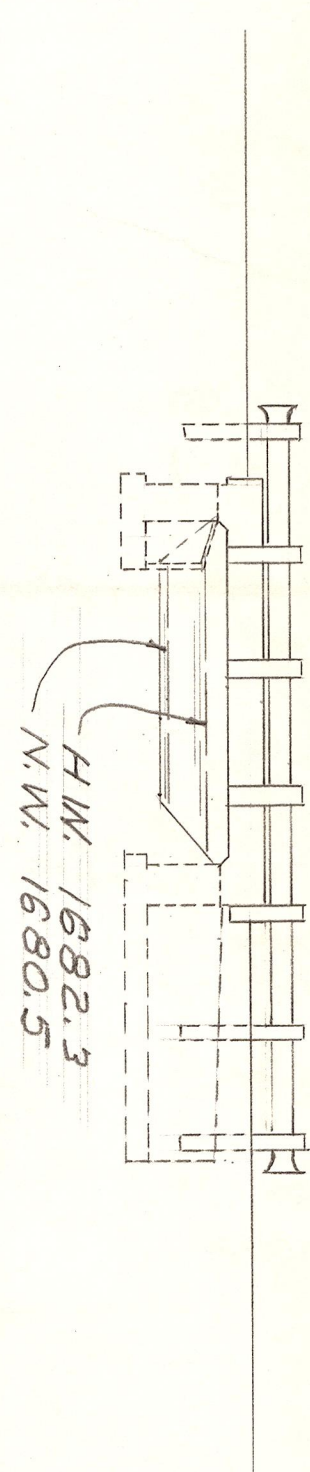


| FED. ROAD DIST. NO. | STATE | FED. AID PROJ. NO. | FISCAL YEAR | SHEET NO. | TOTAL SHEETS |
|------------------------|-------|-----------------------|----------------|--------------|-----------------|
| 8 | WASH. | | | | |



PLAN BRIDGE NO. 7.B / 0.15
Scale 1" = 10'-0"



ELEVATION
Scale 1"=10'-0"

All materials and workmanship shall be in accordance with the requirements of the State of Washington, Department of Highway Standard Specifications for Road and Bridge Construction, dated April, 1948.

All concrete in deck shall be Class "A" mix, and concrete in wingwalls of Bridge No. 7512.0.5 shall be Class "C" mix.

| APPROXIMATE QUANTITIES | | |
|-----------------------------|---------|---------|
| Item | Unit | 7-6/0.5 |
| Concrete Class "A" | Cu Yds. | 49 |
| Concrete Class "C" | Cu Yds. | 7 |
| Steel Reinforcing Bars | Lbs. | 4300 |
| Beam Guard Rail-Type No. 1- | Lin Ft | 70 |
| Special Design | | |
| Structural Steel | Lbs | 270 |
| | | 100 |

SECONDARY STATE HIGHWAY NO. 7-B
ELLENSBURG TO PSH NO. 7
BRIDGES NOS. 7-B/0.15 & 7-B/0.25
KITITAS COUNTY

LAYOUTS

STATE OF WASHINGTON
DEPARTMENT OF HIGHWAYS
OLYMPIA, WASHINGTON

APPROVED: Sept. 1949

APPROVED:

APPROVED:
Don H. Hester
BRIDGE ENGINEER

