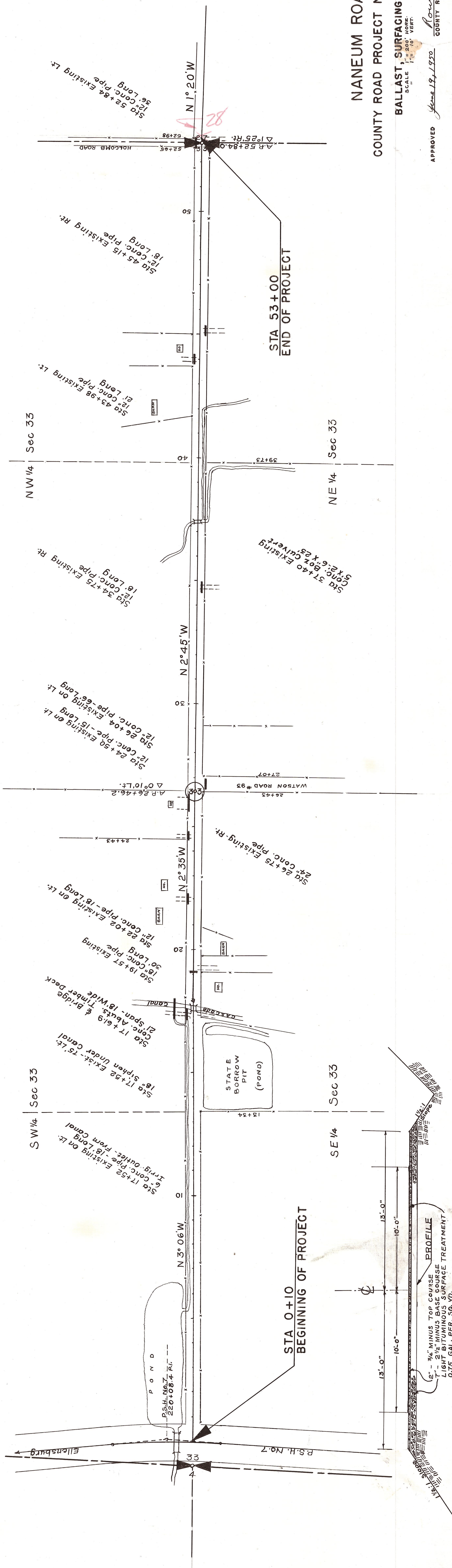


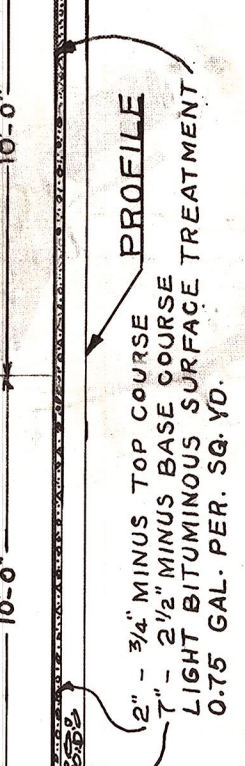
T18N R19EWM

13-1-5



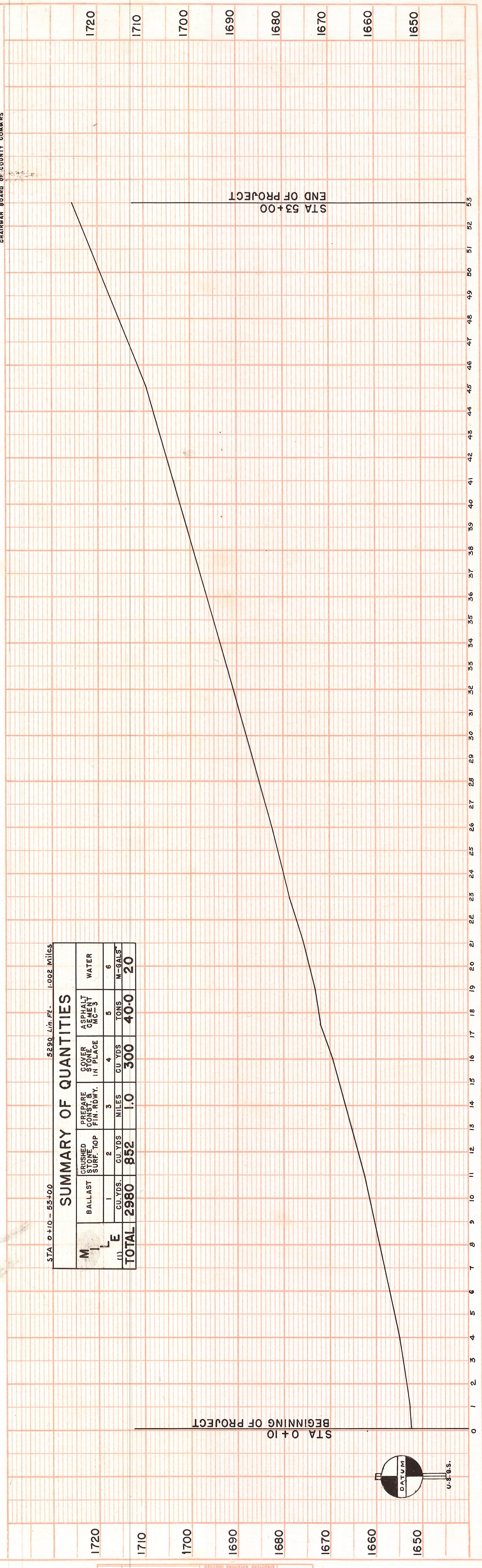
NANEUM ROAD
 COUNTY ROAD PROJECT NO. 38
 BALLAST, SURFACING & OIL
 SCALE 1" = 200' HORIZ.
 1" = 10' VERT.
 APPROVED June 19, 1950
 Chairman Board of County Comm's
 Harold Olman

TYPICAL ROADWAY SECTION



STA 0+10 - 53+00 5290 Lin. Ft. 1.000 Miles

SUMMARY OF QUANTITIES						
M	BALLAST	CRUSHED SURF. TOP	PREPARE COVER FIN. ROW	GOVER IN PLACE	ASPHALT	WATER
CU. YDS.	CU. YDS.	CU. YDS.	MILES	CU. YDS.	TONS	M-GALS.
1	2	3	1.0	4	5	6
TOTAL	2980	852	1.0	300	40-0	20



PLAN

NO. _____

DATE _____

REVISIONS

BY _____

DATE _____

PROFILE

NO. _____

DATE _____

REVISIONS

BY _____

DATE _____