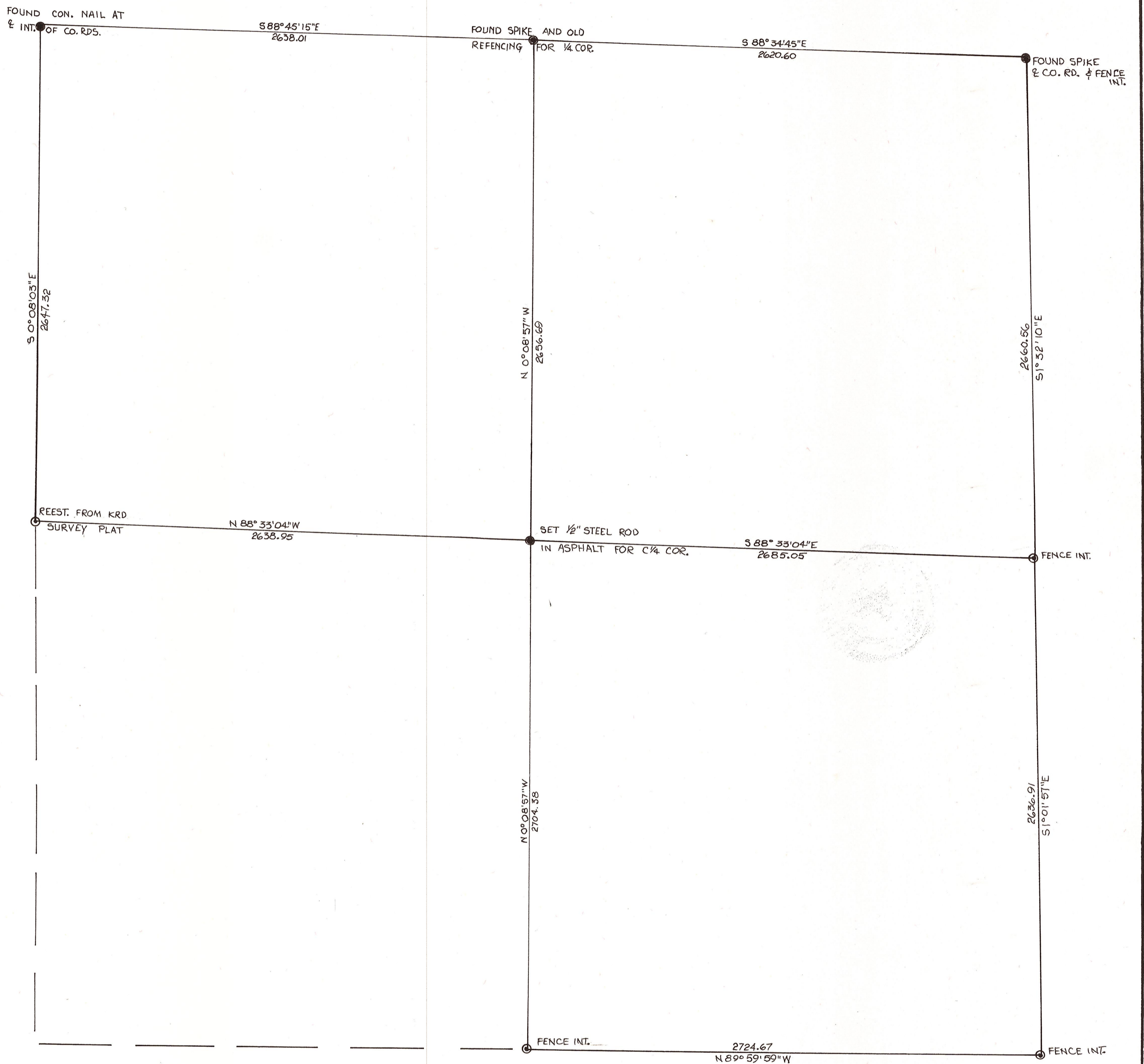

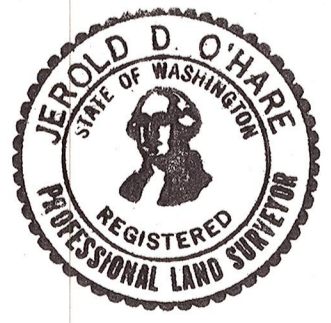


SECTION 16, T. 17 N., R. 18 E. W.M.
KITTITAS COUNTY, WASH.




 © SET 3/8" x 24" STEEL ROD
 WITH ALUM. CAP
 SCALE: 1" = 400'



I CERTIFY THE ABOVE PLAT IS BASED ON
 THE ACTUAL SURVEY AND IS CORRECT.
Jerold D. O'Hare
 JEROLD D. O'HARE
 PROFESSIONAL LAND SURVEYOR
 FEBRUARY 12, 1973