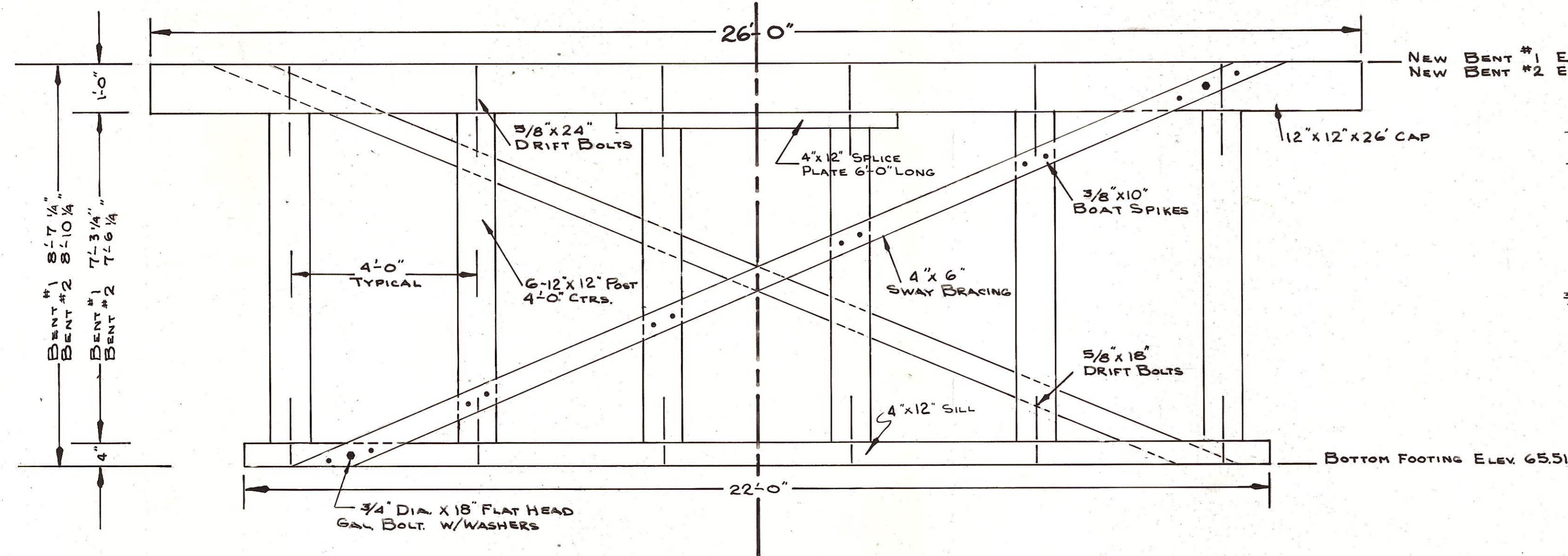
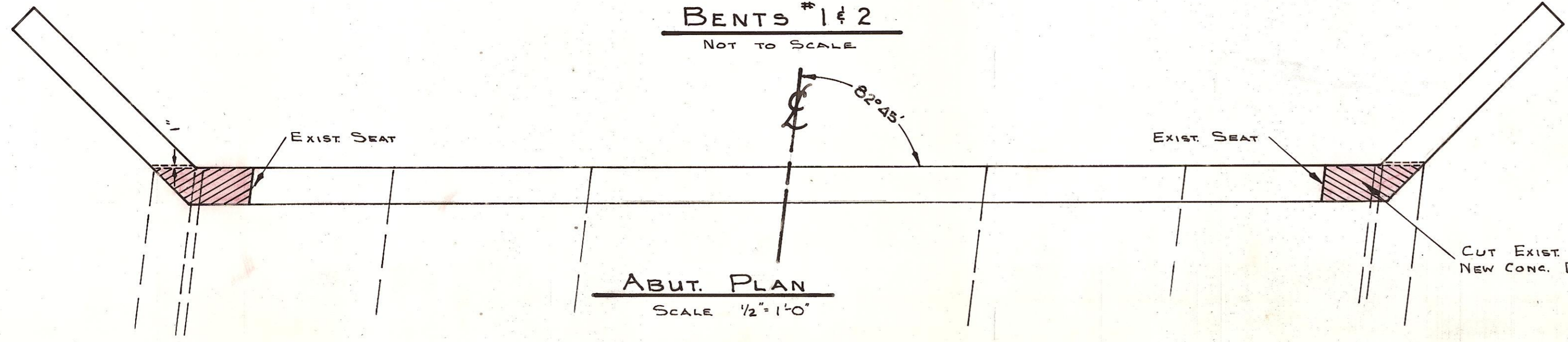


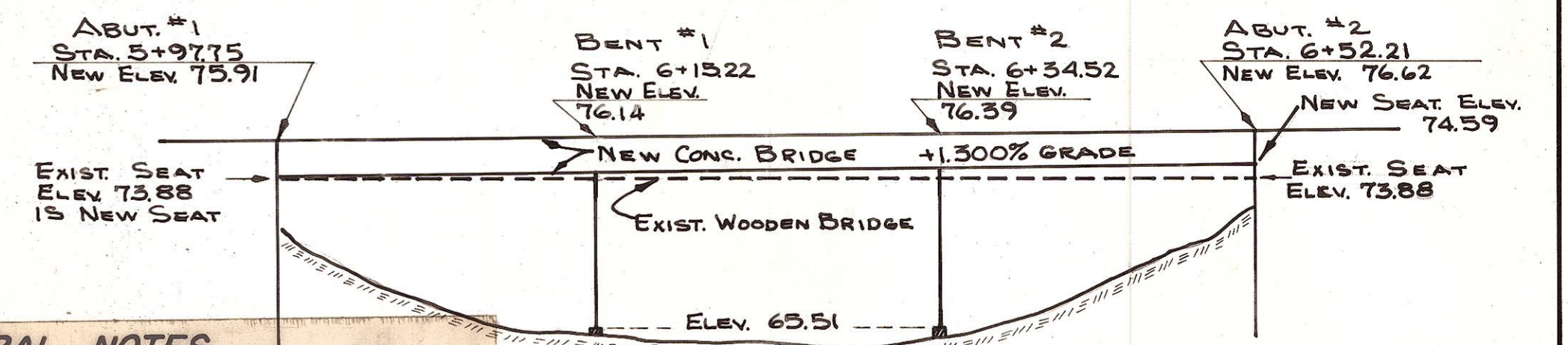
PLAN
SCALE: 1/4" = 1'-0"



BENTS #1 & 2
NOT TO SCALE



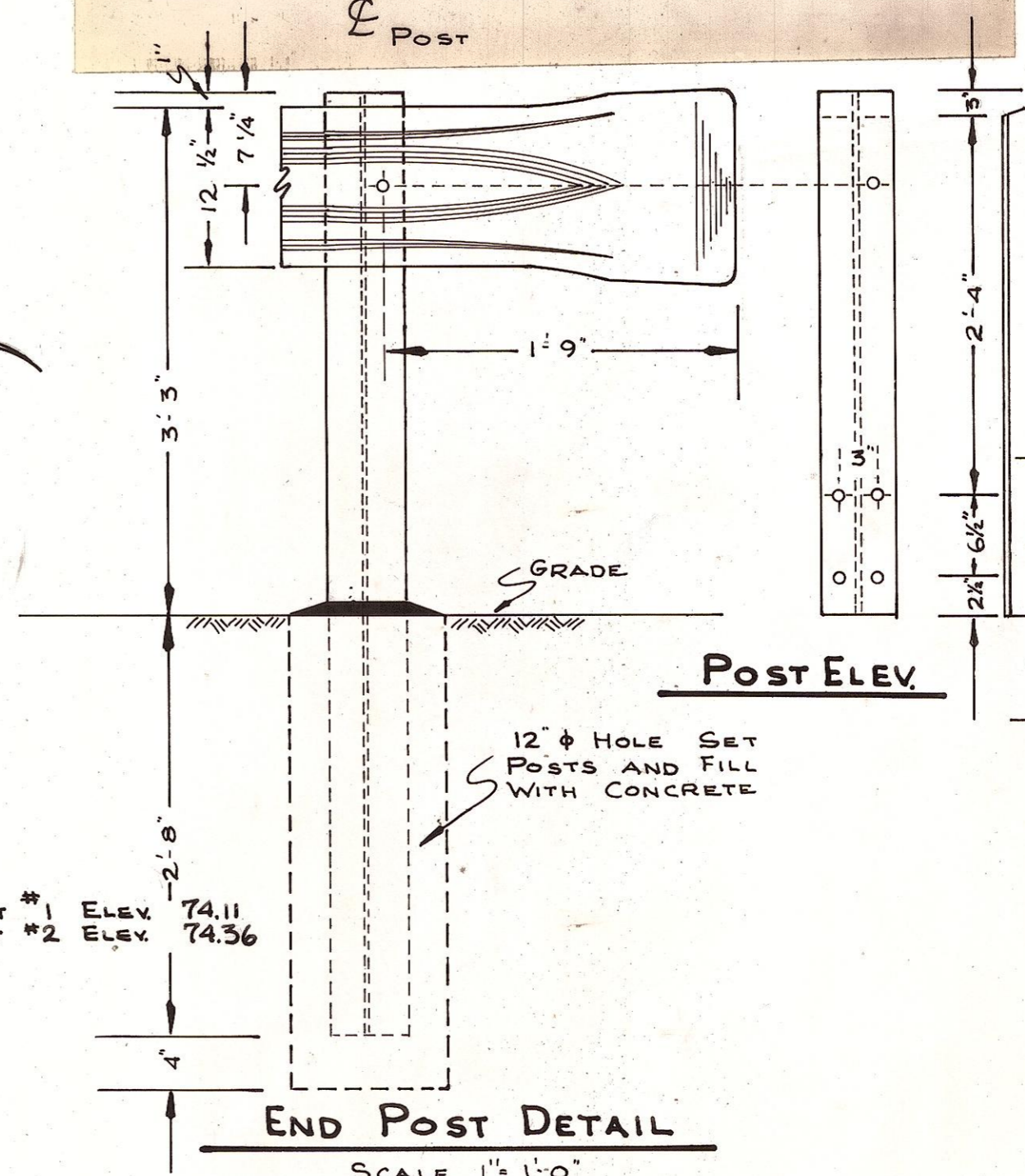
ABUT. PLAN
SCALE: 1/2" = 1'-0"



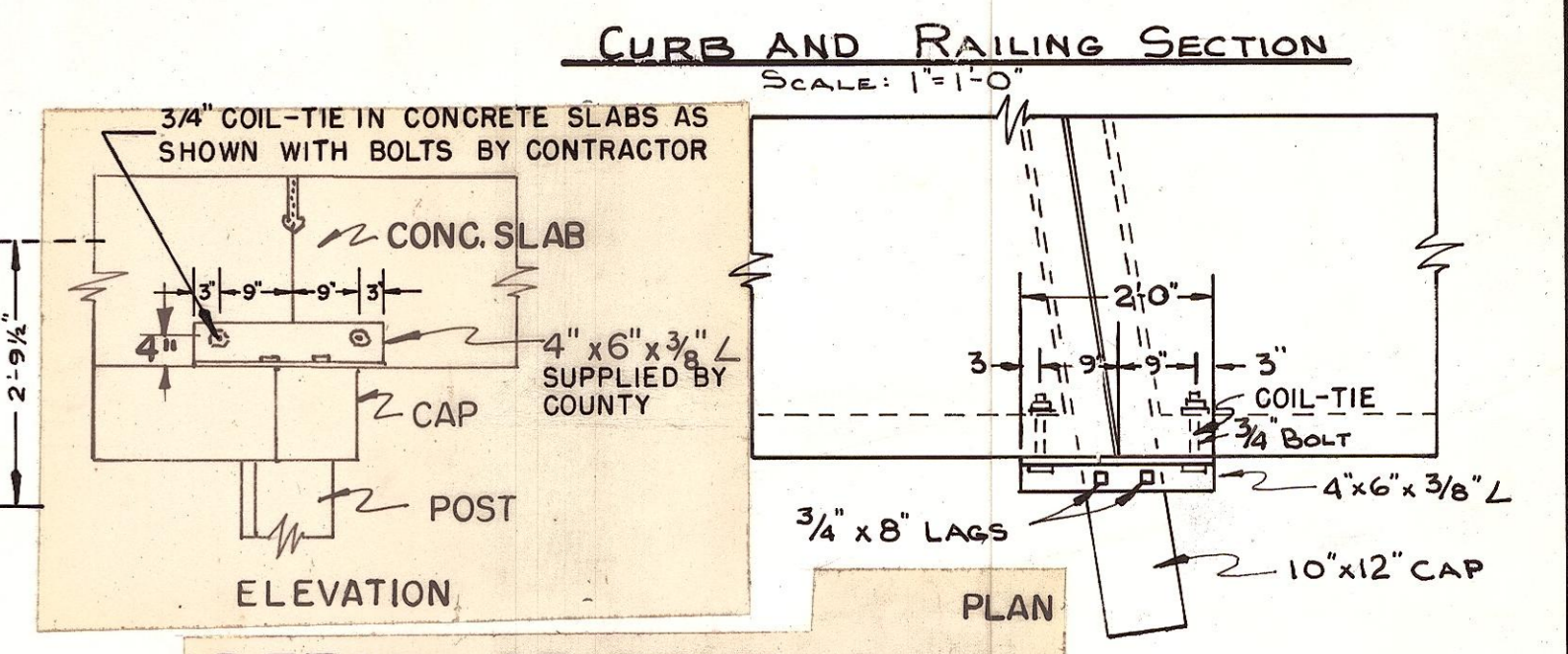
CENTER LINE SECTION
SCALE: 1/8" = 1'-0"

GENERAL NOTES

1. ALL MATERIALS AND WORKMANSHIP SHALL BE IN ACCORDANCE WITH THE REQUIREMENTS OF THE STATE OF WASHINGTON, DEPARTMENT OF HIGHWAYS, STANDARD SPECIFICATIONS FOR ROAD AND BRIDGE CONSTRUCTION, DATED 1963, AMENDED JUNE, 1968 AND THE ATTACHED SPECIAL PROVISIONS.
2. ALL LUMBER AND TIMBER SHALL BE CONSTRUCTION GRADE DOUGLAS FIR COAST REGION NO. 1
3. ALL LUMBER AND TIMBER SHALL BE TREATED BY THE EMPTY CELL PROCESS TO PROVIDE A MINIMUM RETENTION OF 10 POUNDS OF CREOSOTE OIL IN ACCORDANCE WITH THE STANDARD SPECIFICATIONS.
4. ALL HARDWARE SHALL BE GALVANIZED (A.S.T.M. DESIGNATION A-153)



END POST DETAIL
SCALE: 1" = 1'-0"



DETAIL OF BENT ENDS
SCALE: 1/2" = 1'-0"

ABUT. #2 SECTION
SCALE: 1/2" = 1'-0"

OFFICE OF COUNTY ROAD ENGINEER
KITITAS COUNTY
 ELLENSBURG, WASHINGTON
 LOWER GREEN CANYON ROAD
 BRIDGE # 98281

SCALE: 1/2" AS SHOWN CRP 3-70
 DRAWN BY BS DATE JAN., 1970 SHEET

APPROVED: 9/10/70 DATE *Bradley E. Blossom*
 COUNTY ROAD ENGINEER