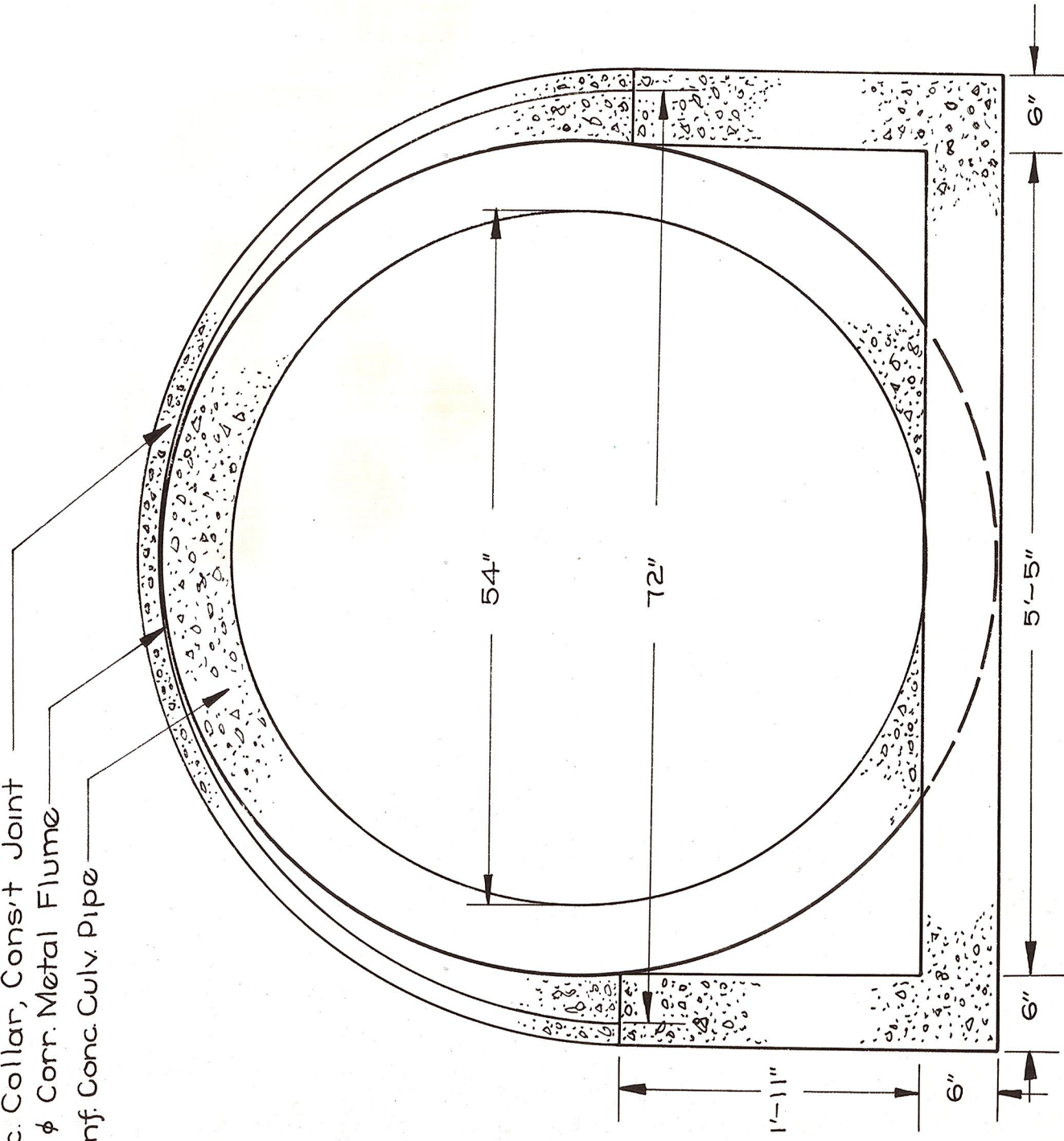
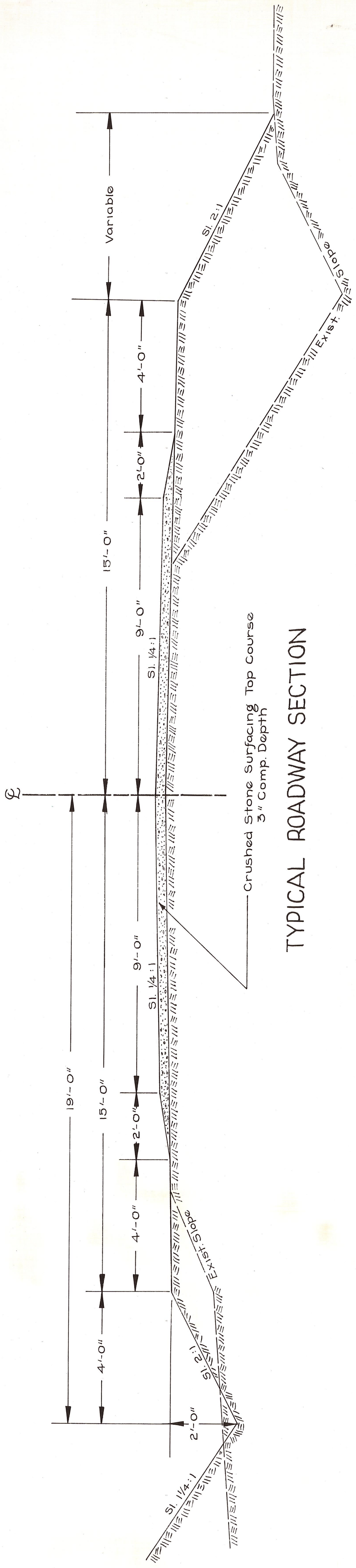


2" Conc. Collar, Const. Joint
 72" $\frac{1}{2}$ ϕ Corr. Metal Flume
 54" Reinf. Conc. Culv. Pipe



EXTENSION OF 54" REINF. CONC. PIPE WITH 72" $\frac{1}{2}$ ϕ CORR. METAL FLUME ON RT. OF STA. 44+63
 SCALE 1"=1'-0"



TYPICAL ROADWAY SECTION

STA. 30+180 TO STA. 58+83.1
 SCALE 1"=2'-0"

COUNTY ROAD PROJECT No
 EXTENSION of FIRST AVENUE
 KITTITAS COUNTY AIRPORT
 KITTITAS COUNTY, WASH.
 (1957) AIRPORT EXTENSION OF WALNUT ST.

COUNTY ROAD ENGINEER
 APPROVED _____, 194__

CHAIRMAN, COUNTY BOARD OF COMMISSIONERS
 SHEET 2 OF 2

RECAPITULATION

STA. 30+180 TO STA. 58+83.1

LENGTH
 2,865.1 LIN. FT. = 0.531 MILES

ITEM		OVERHAUL		EXCAVATION		UNCLASSIFIED EXCAVATION		ROADWAY FINISHING		WATER		CONCRETE CL. C.		REINF. CONC. CULV. PIPE 48" DIAM.		CORR. METAL PIPE 12" DIAM.		FLUME 72" DIAM. $\frac{1}{2}$ ϕ CORR. METAL		REM. EXIST. REINF. CONC. PIPE 24" DIAM.		RELAY REINF. CONC. PIPE 24" DIAM.	
NUMBER	UNIT	CU YDS	M-CY STAS	CU YDS	M-CY STAS	CU YDS	M-CY STAS	STAS. (100)	M-GALS.	M-GALS.	CU YDS	CU YDS	CU YDS	CU YDS	CU YDS	CU YDS	CU YDS	CU YDS	CU YDS	CU YDS	CU YDS	CU YDS	CU YDS
1	1650	1650	368.6	4	30	4	30	6	28.7	7	20	8	1.4	9	66	10	60	11	6	12	60	13	51
TOTAL	1650	368.6	2.134	30	30	400	400	28.7	20	20	1.4	1.4	66	66	60	60	6	6	60	60	51	51	