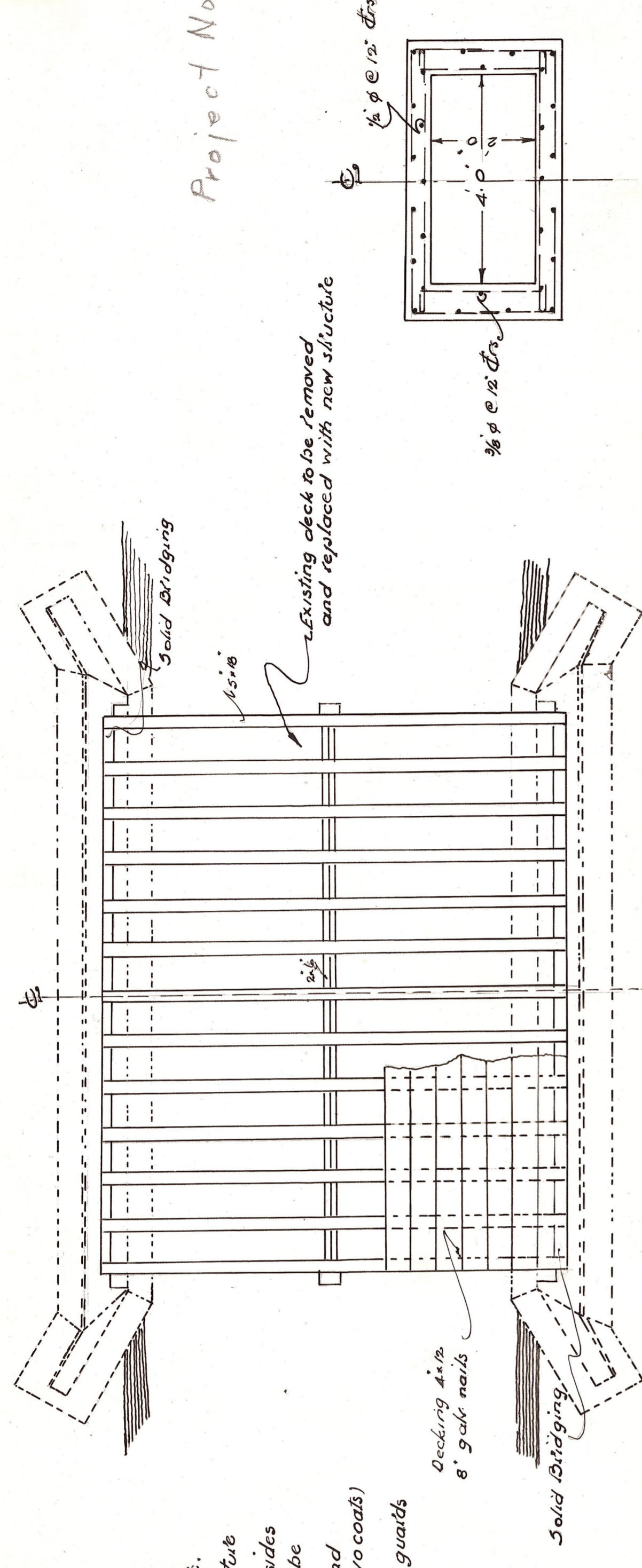
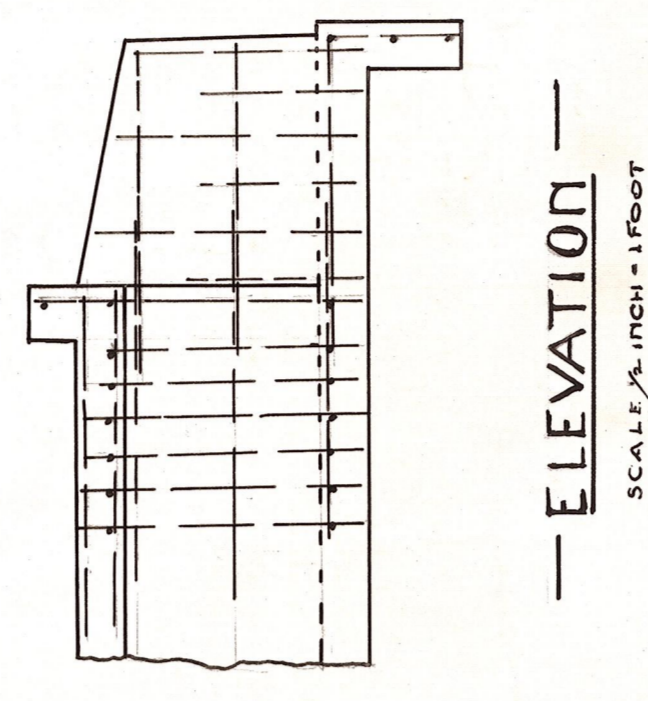


Project No 16

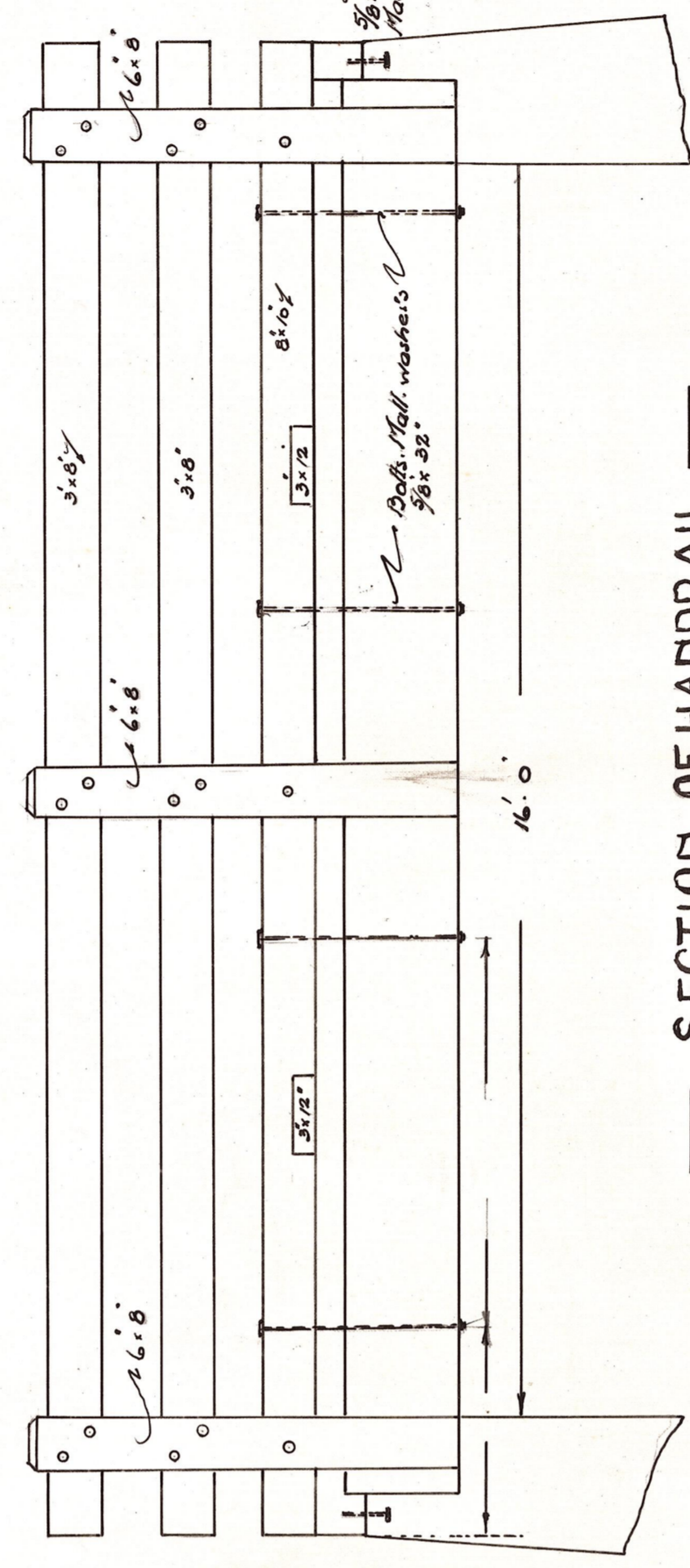


SECTION
SCALE 1/8" INCH = 1 FOOT

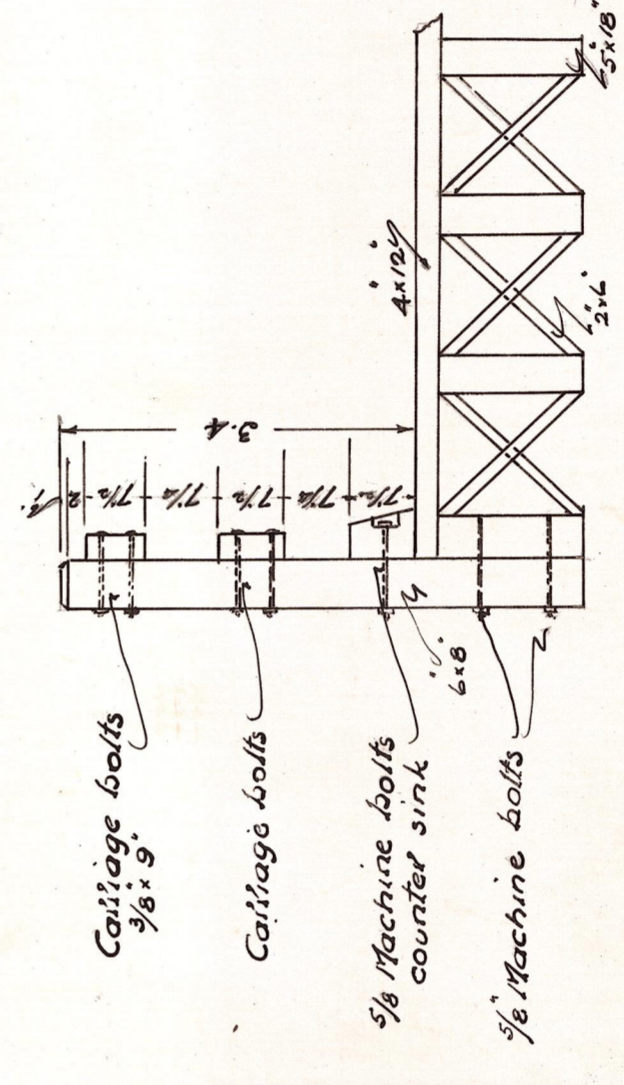


ELEVATION
SCALE 1/8" INCH = 1 FOOT

PLAN
SCALE 1/8" INCH = 1 FOOT

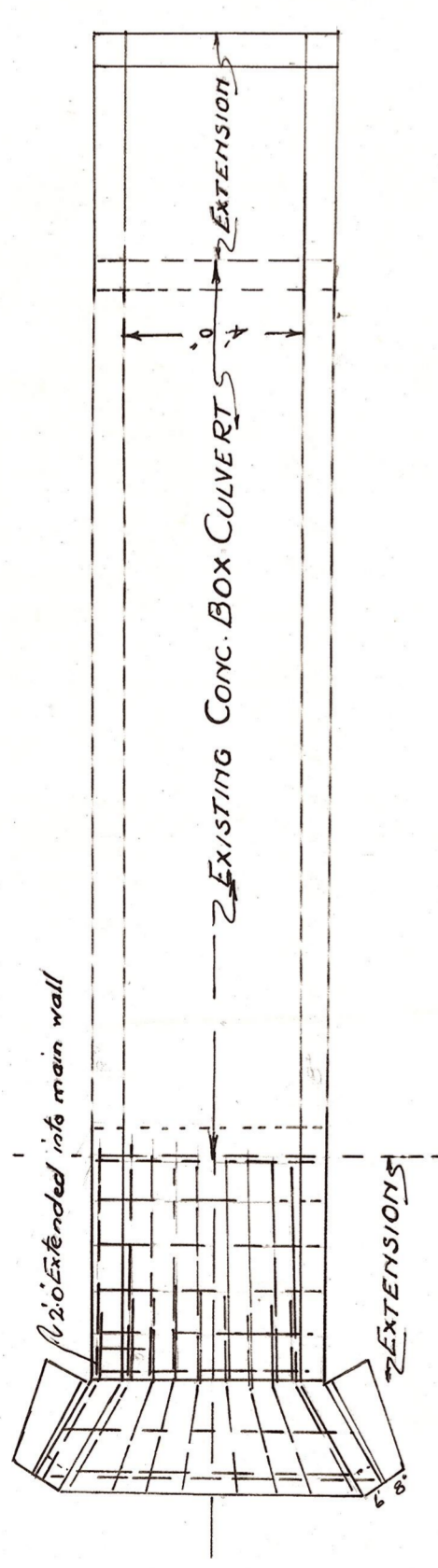


SECTION OF HANDRAIL
SCALE 1/8" INCH = 1 FOOT

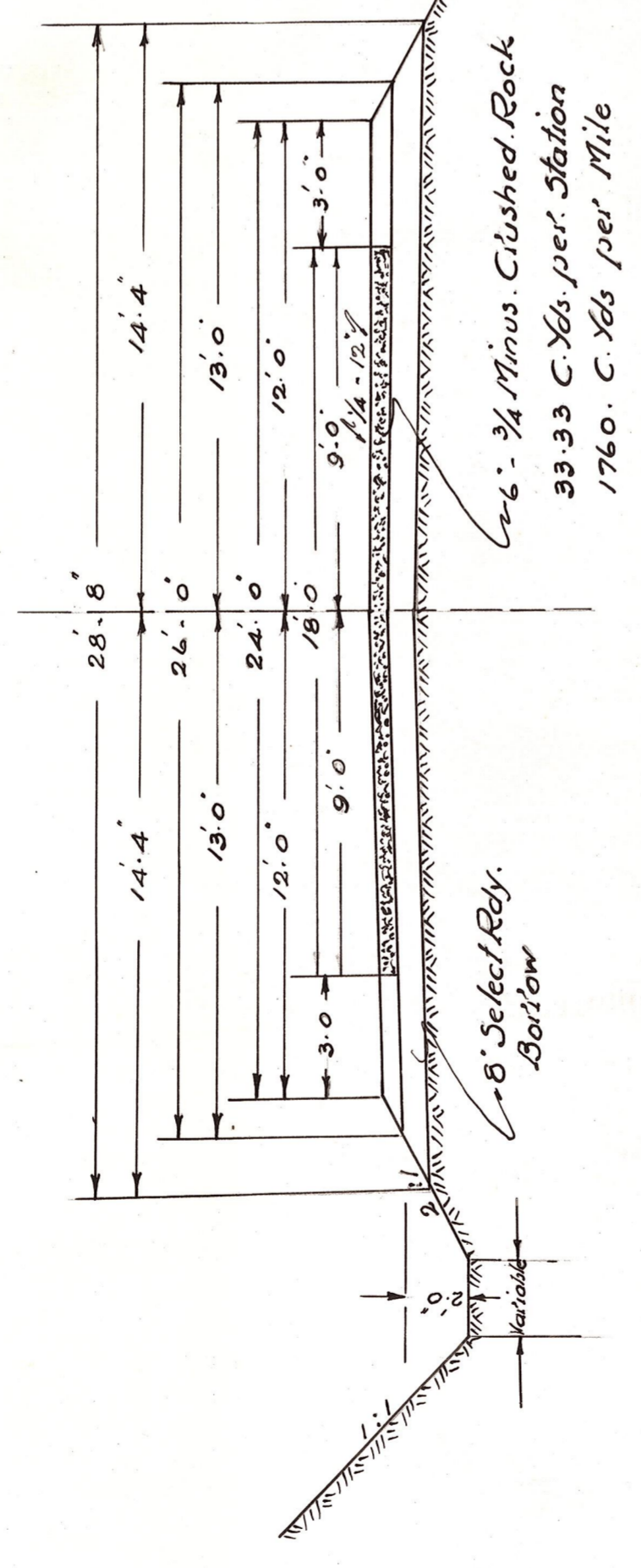


END SECTION
SCALE 1/8" INCH = 1 FOOT

Note
Existing deck, handrail etc. to be removed and replaced with new structure
Widening of Bridge on both sides
All railroads and nails to be galvanized
stringer ends, both ends and bridging to be cetoched (two coats)
brush treated
Handrail, Posts, and Wheel guards to have two coats
Federal Yellow Paint*



PLAN OF CULVERT
SCALE 1/4" INCH = 1 FOOT



TYPICAL SECTION

— 10683.1 FEET — SUMMARY — 2.023 MILES. —

MILE	EXCAVATION		OVERHAUL MILE	CONCRETE CLASS B	CRUSHED ROCK	CONCRETE REINF.	PIPE		TIMBER AND PLANK	CLEARING AND GRUBBING LUMP SUM
	CLASS A Cu.Yds.	CLASS D Cu.Yds.					PLAIN 12' 12" LF	STD. REINF. 18' 18" LF		
4 PART	3190	20	70	1680	1272	800	66	66	4200	LUMP SUM
5	5100	20	1240	2500	1816	800	66	66	4200	LUMP SUM
6 PART	1190	10		990	596					LUMP SUM
TOTALS	9480	20	1310	5170	3684	800	243	66	4200	LUMP SUM

LOOK
KITITAS COUNTY
STATE OF WASHINGTON
COUNTY ROAD PROJECT No 16

APPROVED
COUNTY ROAD ENGR.
MEMBER
COUNTY COMMISSIONERS

