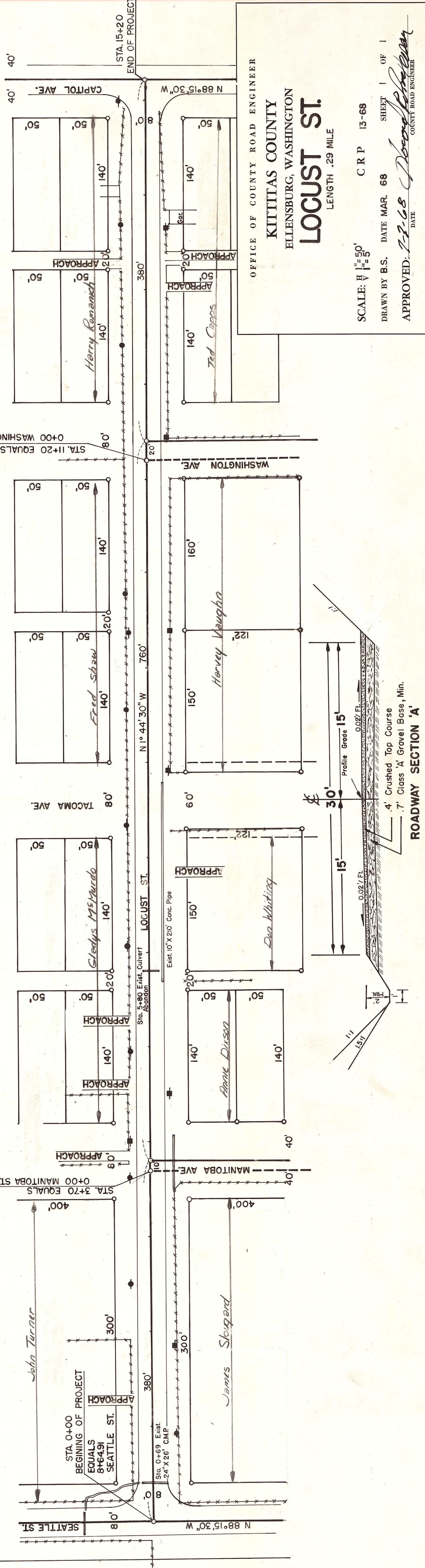


T.17N.R.18E. WM.



OFFICE OF COUNTY ROAD ENGINEER
KITTITAS COUNTY
 ELLENSBURG, WASHINGTON
LOCUST ST.
 LENGTH .29 MILE

SCALE: $\frac{1}{4}'' = 50'$ C R P 13-68 SHEET 1 OF 1
 DRAWN BY B.S. DATE MAR. 68
 APPROVED: *[Signature]* COUNTY ROAD ENGINEER
 DATE 12-68



NO.	DATE	BY

NO.	DATE	BY