

**KITTITAS HIGHWAY
BRIDGE NO. 79031**

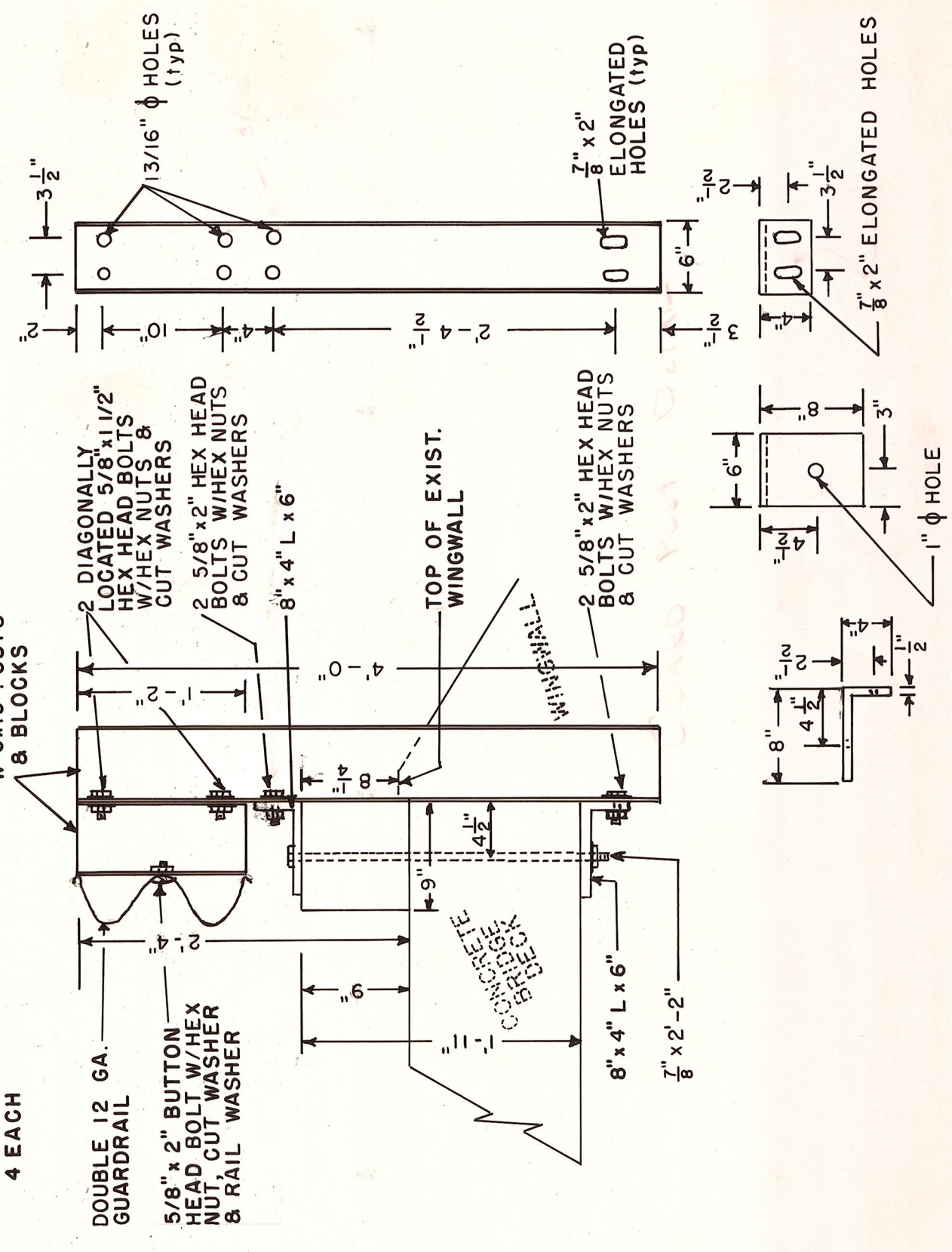
QUANTITIES

TYPE 1 GUARDRAIL INCLUDING TERMINAL SECTIONS	156	LINEAL FT.
DOUBLE BEAM GUARDRAIL	50	LINEAL FT.
TYPE 1 ANCHOR	4	EACH
EMBANKMENT, IN PLACE	85	CUBIC YARDS
TOP COURSE, IN PLACE	11	CUBIC YARDS
DITCH EXCAVATION	5	CUBIC YARDS
BRIDGE GUARDRAIL POST TYPE 2 INSTALLED	4	EACH

NOTES

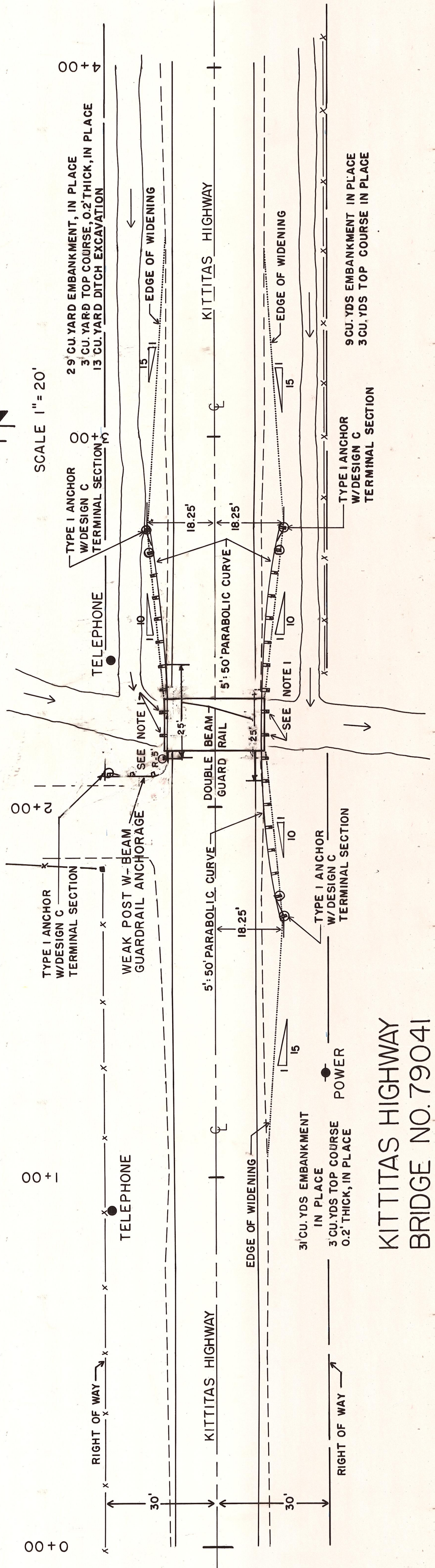
NOTE 1: 4 EACH NEW W6x15 BRIDGE GUARDRAIL POST TYPE 2 SEE PAGE 31 SPECIAL PROVISIONS. 2 PER SIDE PLACED SYMMETRICALLY ABOUT CENTER OF SPAN.

NOTE: REMOVE EXISTING GUARDRAIL AND POSTS.



GUARDRAIL POST & BLOCK TYPE 2

SCALE: 1" = 1'-0"



**KITTITAS HIGHWAY
BRIDGE NO. 79041**

QUANTITIES

TYPE 1 GUARDRAIL INCLUDING TERMINAL SECTIONS WEAK POST W/ BEAM GUARDRAIL ANCHORAGE	143.5	LINEAL FT.
DOUBLE BEAM GUARDRAIL	50	LINEAL FT.
TYPE 1 ANCHOR	3	EACH
EMBANKMENT IN PLACE	69	CUBIC YARDS
TOP COURSE IN PLACE	9	CUBIC YARDS
DITCH EXCAVATION	13	CUBIC YARDS
BRIDGE GUARDRAIL POST TYPE 2 INSTALLED	4	EACH

NOTES

NOTE 1: INSTALL 4 EACH BRIDGE GUARDRAIL POST TYPE 2 SEE P. 31 SPEC. PROV. 2 PER SIDE SYMMETRICALLY ABOUT CENTER OF SPAN.

NOTE 2: REMOVE EXISTING GUARDRAIL AND POSTS.

DEPT. OF PUBLIC WORKS
KITTITAS COUNTY
ELLENSBURG, WASHINGTON
KITTITAS HIGHWAY BRIDGE ET AL.
APPROACH GUARDRAILS

SCALE: H 1" = 20'
DRAWN BY DLT DATE SEPT. 1981
APPROVED: 4/27/83
SHEET 4 OF 14
DIRECTOR OF PUBLIC WORKS

