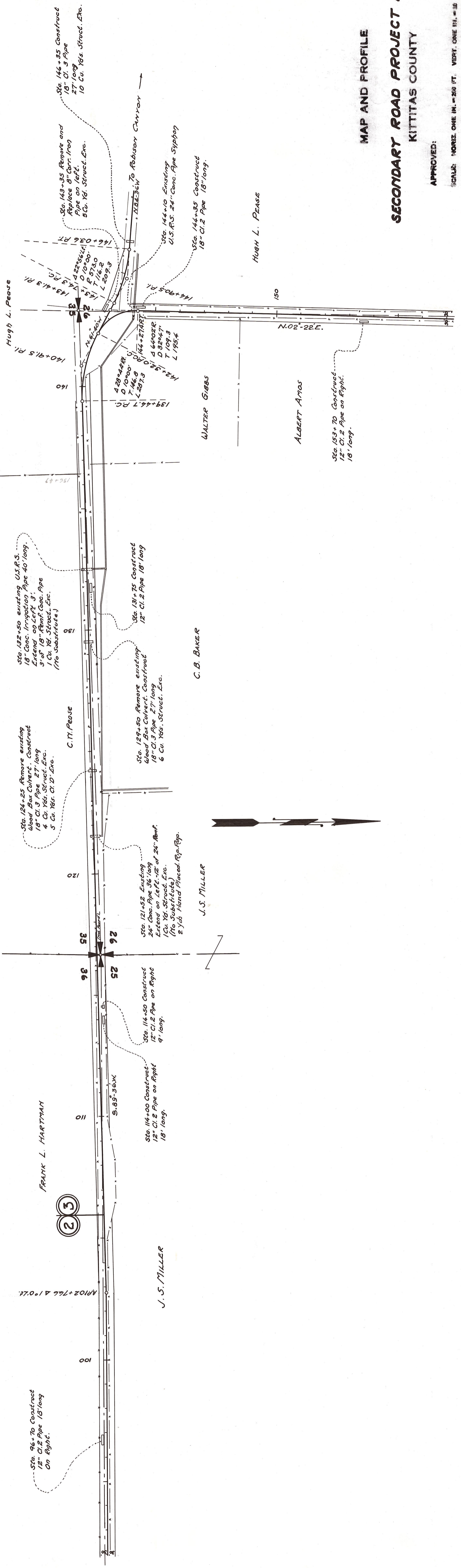
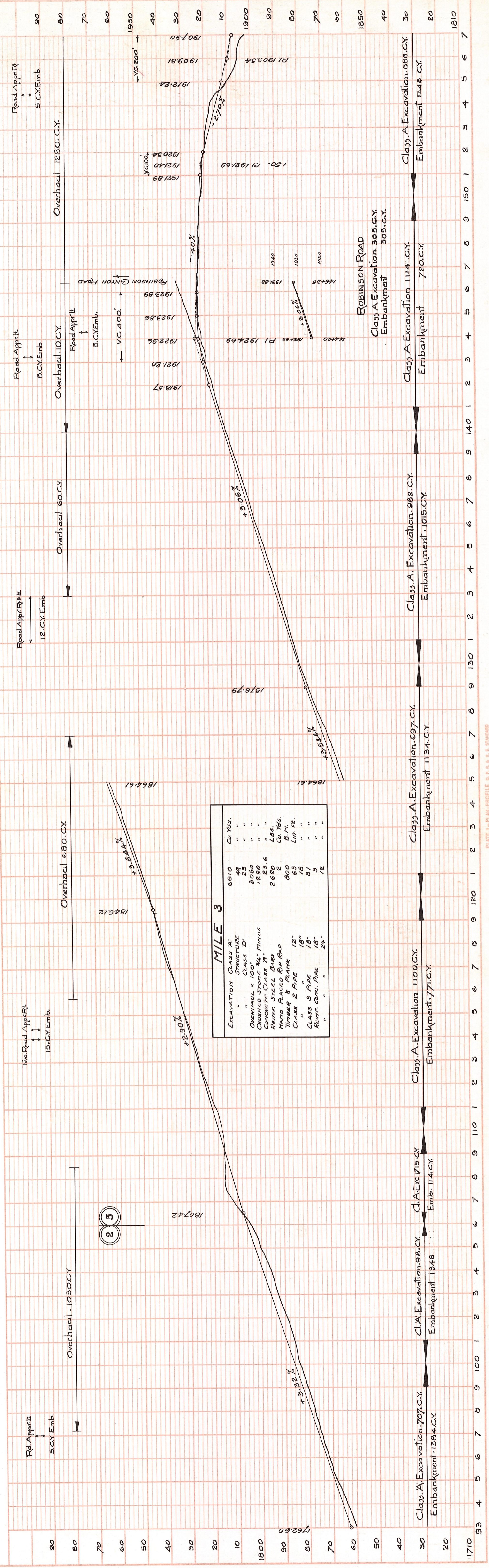


T. 18 N.R. 17 E. W. M.



MAP AND PROFILE
SECONDARY ROAD PROJECT NO. 8
KITITTS COUNTY

APPROVED:
SCALE: HORIZ. ONE IN. = 200 FT. VERT. ONE IN. = 30 FT.
SHEET 3 OF 6 SHEETS



PLAN

DATE: _____ BY: _____

NOTED: _____

NOTE BOOK: _____

GRADES CHECKED: _____

PLOTTED: _____

STRUCTURE NOTATIONS CHECKED: _____

PROFILE

DATE: _____ BY: _____

NOTED: _____

NOTE BOOK: _____

GRADES CHECKED: _____

PLOTTED: _____

STRUCTURE NOTATIONS CHECKED: _____