

32-22

15-8-1 HAYWARD RD. (THORP HWY.) 17-45

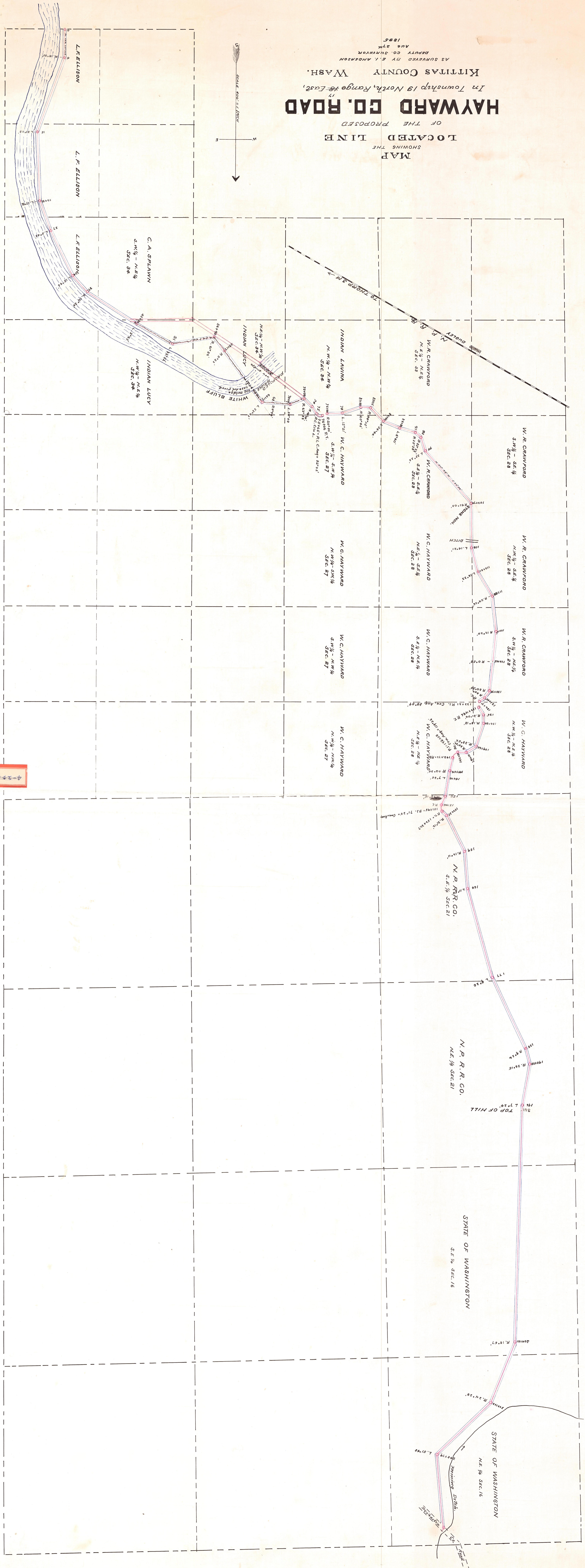
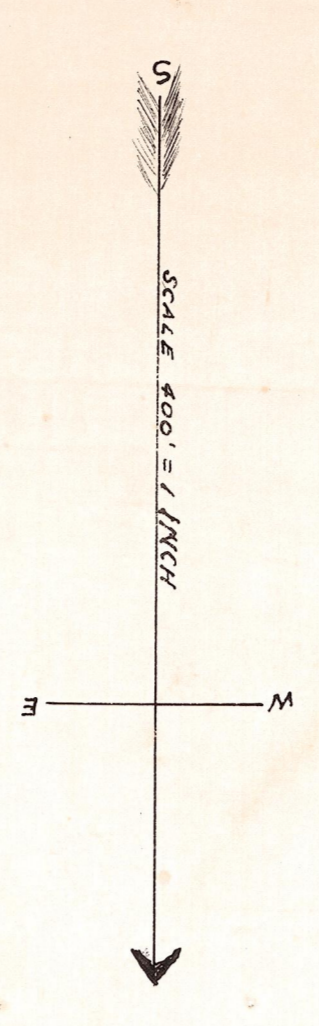
Filed Oct 10 1895
g. m. b. m. e. r
co. d. m. e. r
Hayward Co. Wash.

HAYWARD CO. ROAD

LOCATED LINE
OF THE PROPOSED
MAP
SHOWING THE
LOCATED LINE

In Township 19 North, Range 18 East,
KITITAS COUNTY WASH.

AS SURVEYED BY E. I. ANDERSON
DEPUTY CO. SURVEYOR
AUG. 27th
1895



THORP HIGHWAY

4-2-13