

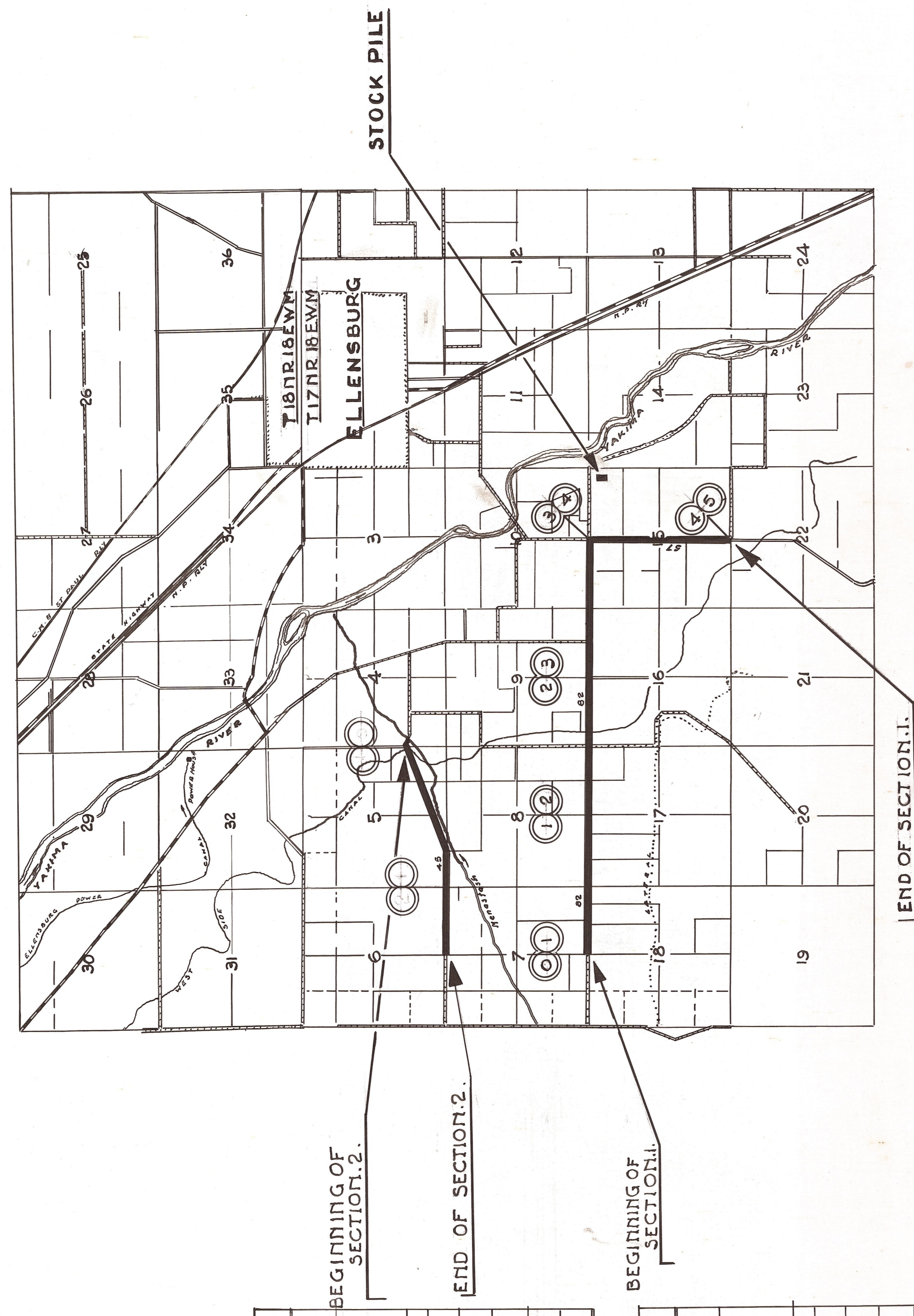
— TYPICAL SECTION —

SECTION 1.					
M.P. 0.00 TO M.P. 4.00 4.00 MILES					
MILE	PREPARATION AND FINISHING ROADWAY MILES	MINERAL AGGREGATE IN PLACE FROM STOCK PILE CU. YDS.	FURNISHED BY ROAD		WATER IN PLACE M. GAL.
			M.C.2	W.P.A.	
1	1.00	600	35.00	TONS	40.00
2	1.00	600	35.00	TONS	40.00
3	1.00	600	35.00	TONS	40.00
4	1.00	600	35.00	TONS	40.00
TOTALS	4.00	2400	140.00		160.00

SECTION 2.					
M.P. 0.00 TO M.P. 1.50 1.50 MILES					
MILE	PREPARATION AND FINISHING ROADWAY MILES	MINERAL AGGREGATE IN PLACE FROM STOCK PILE CU. YDS.	FURNISHED BY ROAD		WATER IN PLACE M. GAL.
			M.C.2	W.P.A.	
1	1.00	600	35.00	TONS	40.00
2 PART	.50	300	18.00	TONS	20.00
TOTALS	1.50	900	53.00		60.00

SUMMARY OF QUANTITIES					
SECTION 1 AND 2 5.50 MILES					
SECTIONS	PREPARATION AND FINISHING ROADWAY MILES	MINERAL AGGREGATE IN PLACE FROM STOCK PILE CU. YDS.	FURNISHED BY ROAD		WATER IN PLACE M. GAL.
			M.C.2	W.P.A.	
1	4.00	2400	140.00	TONS	160.00
2	1.50	900	53.00	TONS	60.00
TOTALS	5.50	3300	193.00		220.00

FURNISHED BY W.P.A. 193 TONS M.C.2. RD. OIL.



KITTITAS COUNTY
STATE OF WASHINGTON
COUNTY ROAD PROJECT NO. 29

SCALE TWO INCHES = 1 MILE
APPROVED *[Signature]* COUNTY ROAD ENGR.
CHAIRMAN
MEMBER
MEMBER
COUNTY COMMISSIONERS
SHEET OF SHEETS