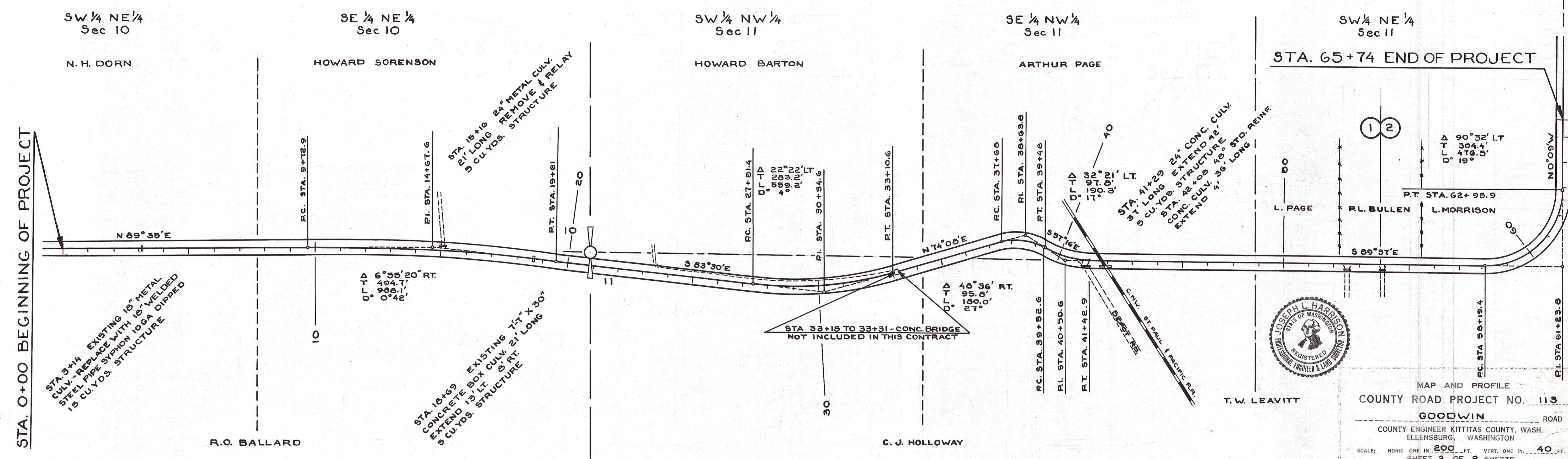
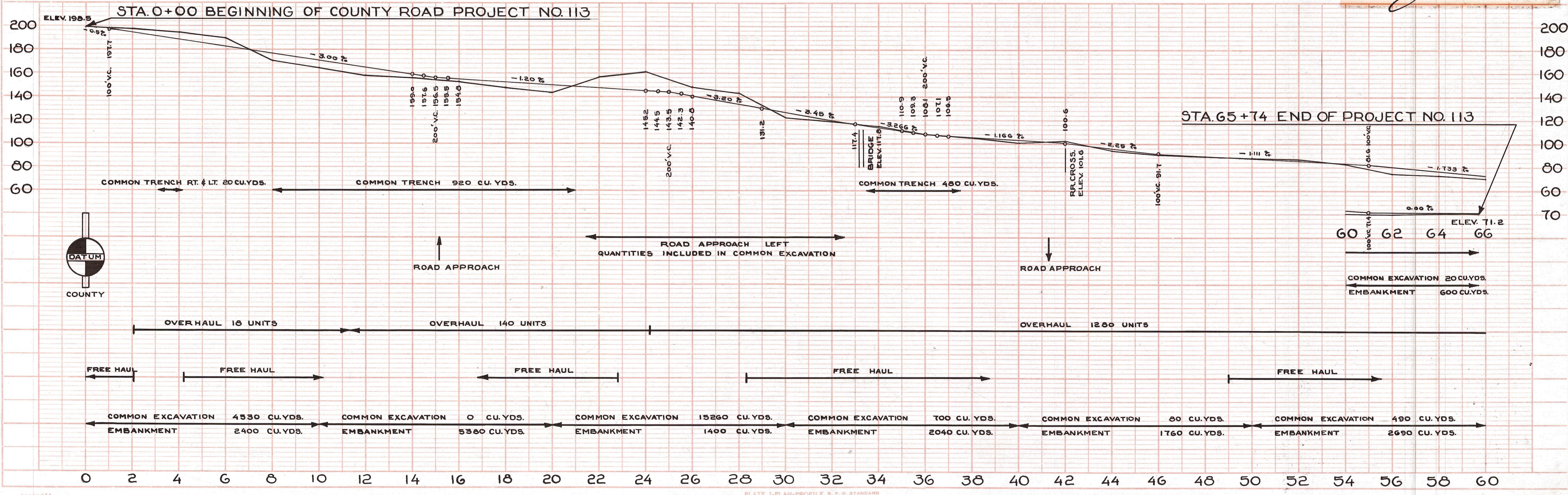


T18 N R17 E.W.M.

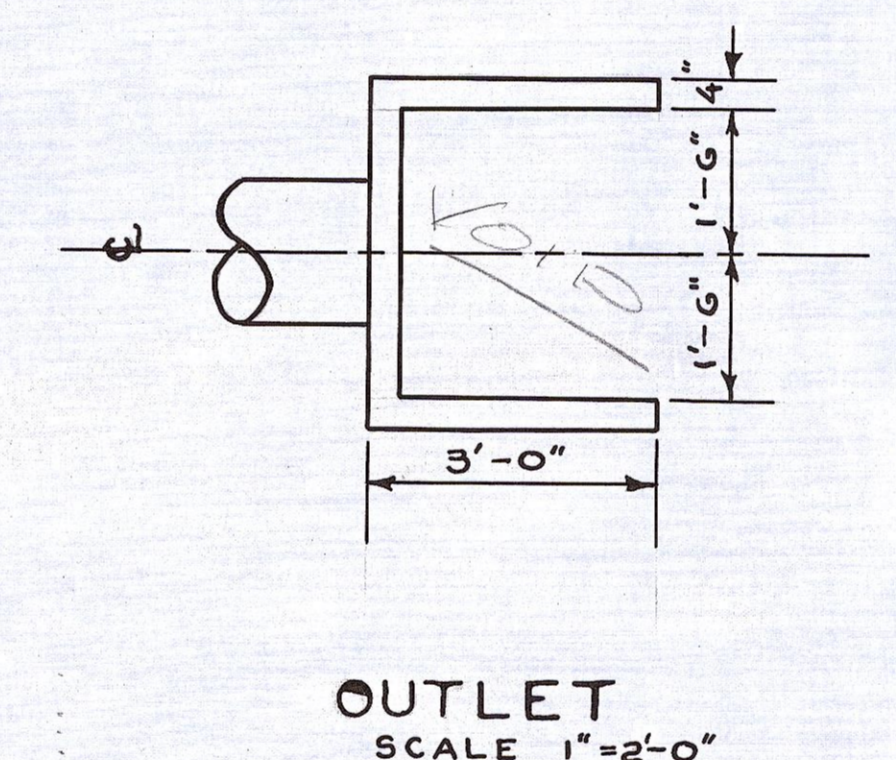
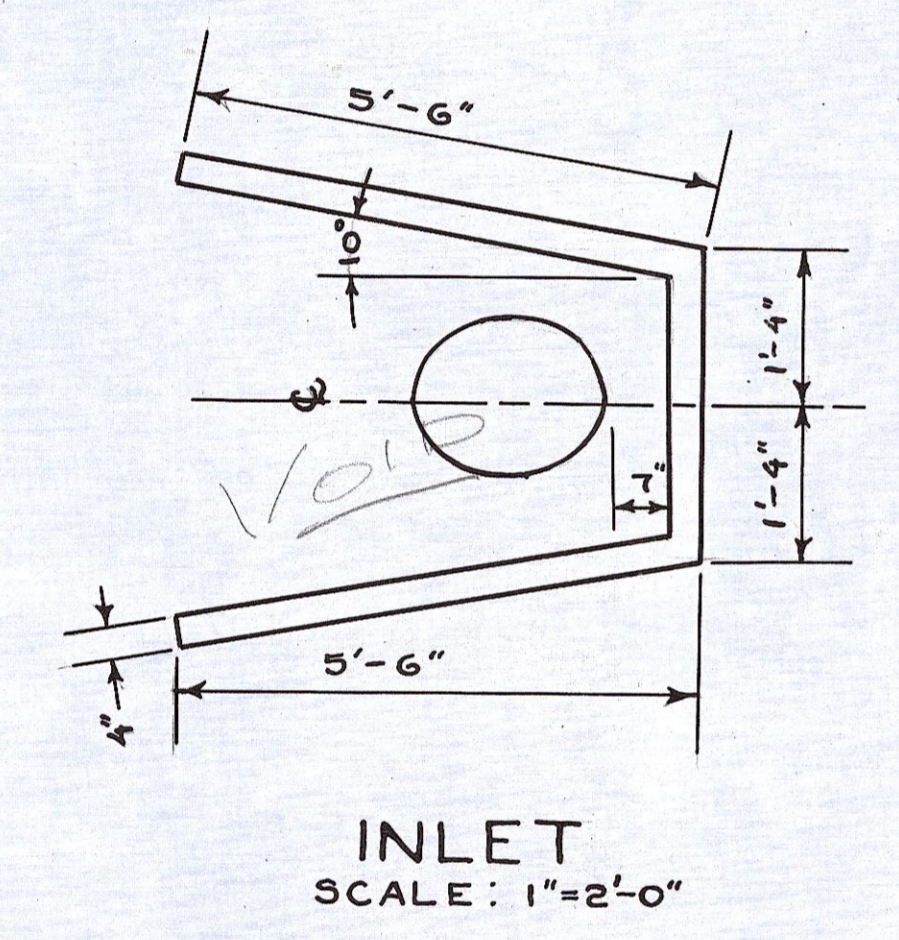
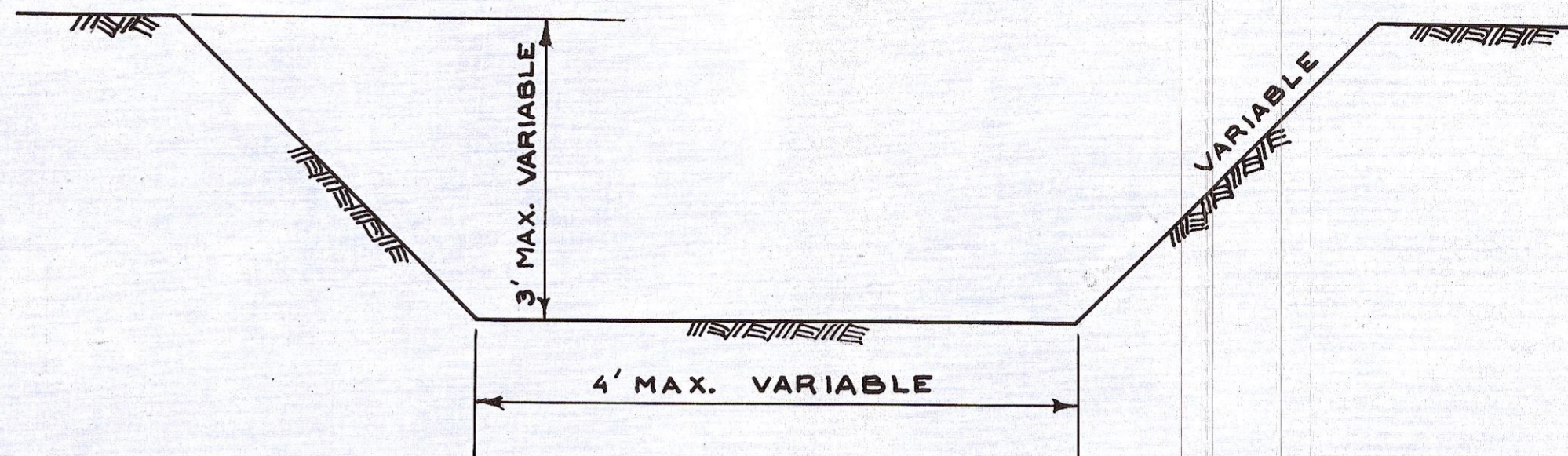
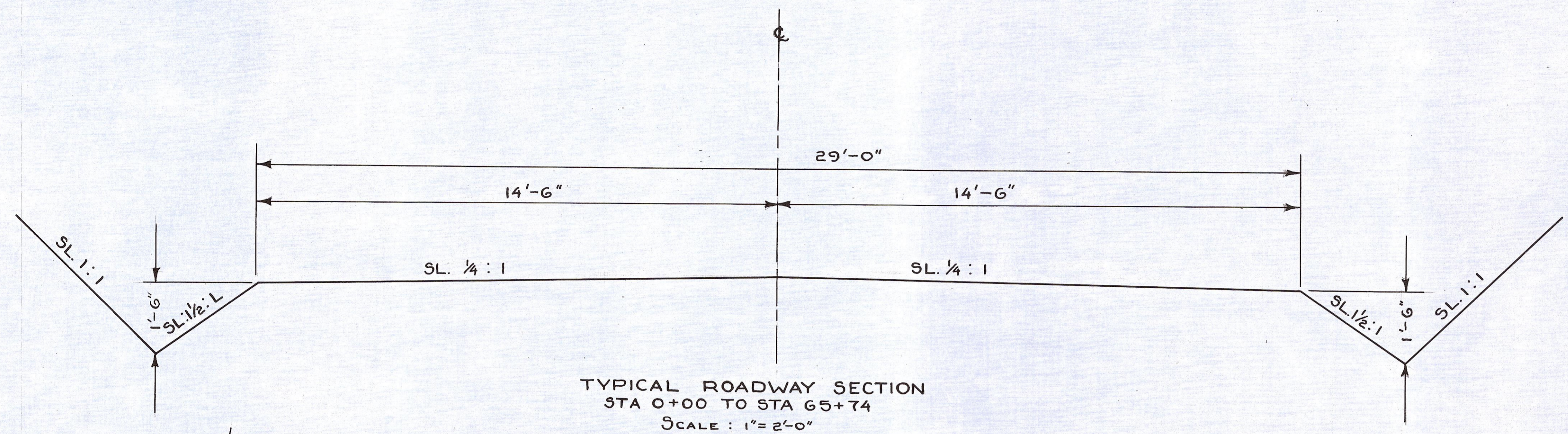


MAP AND PROFILE
 COUNTY ROAD PROJECT NO. 113
GOODWIN ROAD
 COUNTY ENGINEER KITTITAS COUNTY, WASH.
 ELLENSBURG, WASHINGTON
 SCALE: HORIZ. ONE IN. = 200 FT. VERT. ONE IN. = 40 FT.
 SHEET 2 OF 2 SHEETS
J. L. Harrison
 COUNTY ROAD ENGINEER

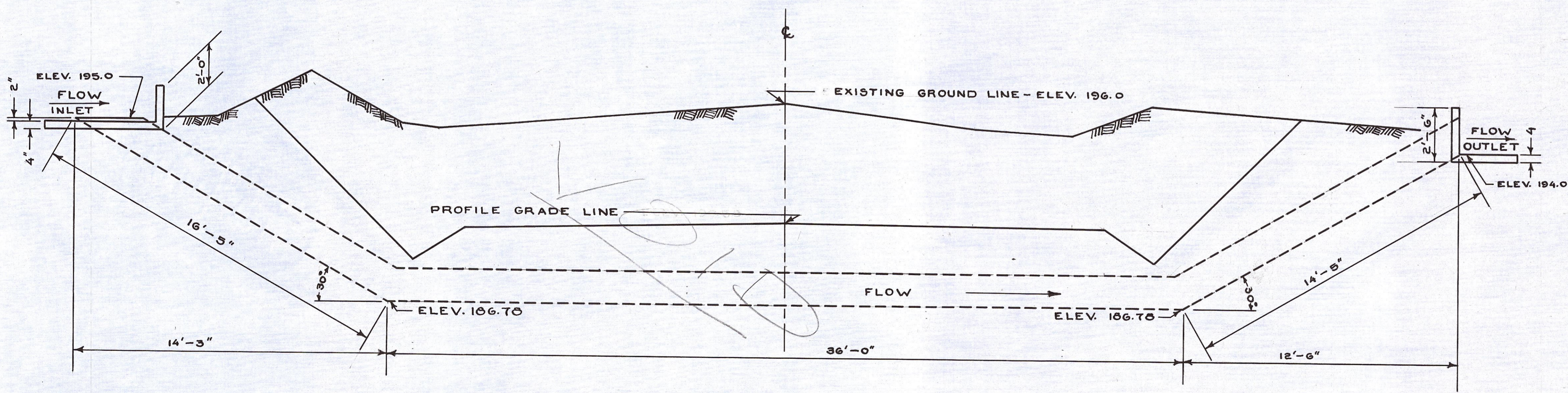


DATE: 8/56
 BY: B.J.P.
 CHECKED: []
 NO. []

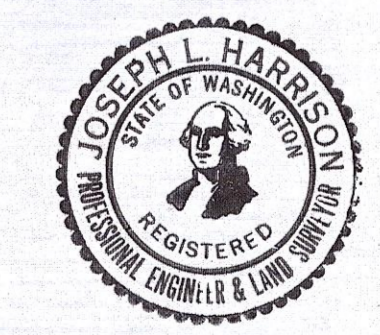
DATE: 8/56
 BY: B.J.P.
 CHECKED: []
 NO. []



6,574 LIN. FT.		SUMMARY OF QUANTITIES			1.25 MILES
NO.	ITEM	MILE 1	MILE 2 (PT)	TOTAL	UNIT
1	CLEARING & GRUBBING				LUMPSUM
EXCAVATION					
2	COMMON EXCAVATION	29870	210	21080	CU. YDS.
3	COMMON TRENCH (INCL. HAUL)	1420		1420	CU. YDS.
4	OVERHAUL	1,236	200	1,436	UNITS
5	STRUCTURE EXCAVATION	30		30	CU. YDS.
6	PNEUMATIC TIRED ROLLER	9	1	10	DAYS
7	MECHANICAL TAMPER	3		3	DAYS
8	FINISHING ROADWAY	53	12.7	65.7	STAS.
9	WATER	82	18	100	MGALS.
10	STD. REINF. CONCRETE CULV. PIPE 48" DIAM.	4		4	LIN. FT.
11	PLAIN CONCRETE CULV. PIPE 24" DIAM.	42		42	LIN. FT.
12	REMOVE & RELAY METAL CULV. PIPE 24" DIAM.	21		21	LIN. FT.
13	CONC. BOX CULV. SIZE 7'-7" X 30" EXTEND 21'	1 ONLY		1 ONLY	LUMPSUM
14	WELDED STEEL SYPHON 18" DIAM.	1 ONLY		1 ONLY	LUMPSUM



HOLLOWAY - SYPHON TO BE CONSTRUCTED AT STA. 3+14
 18" DIA. WELDED STEEL 10 GA DIPPED
 SCALE: 1"=3'-0"



MAP AND PROFILE
 COUNTY ROAD PROJECT NO. 113
 GOODWIN ROAD
 COUNTY ENGINEER KITTITAS COUNTY, WASH.
 ELLENSBURG, WASHINGTON
 SCALE: HORIZ. ONE IN. = 40 FT. VERT. ONE IN. = 10 FT.
 SHEET 1 OF 2 SHEETS
 J. L. Harrison
 COUNTY ROAD ENGINEER