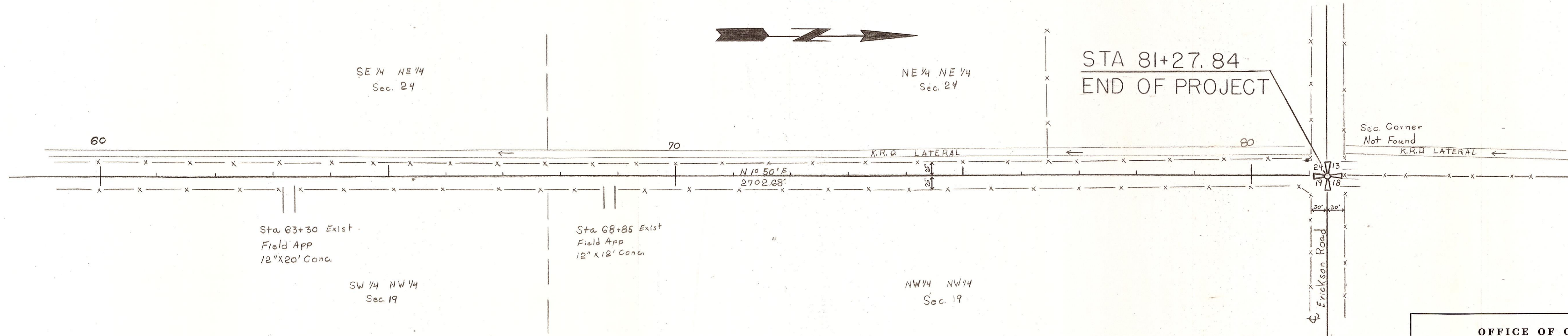


T. 18 N.R. 19 E. W.M.

Sec. 24



OFFICE OF COUNTY ROAD ENGINEER
KITTITAS COUNTY
 ELLENSBURG, WASHINGTON

GILBERT ROAD
 Length .91 Mile

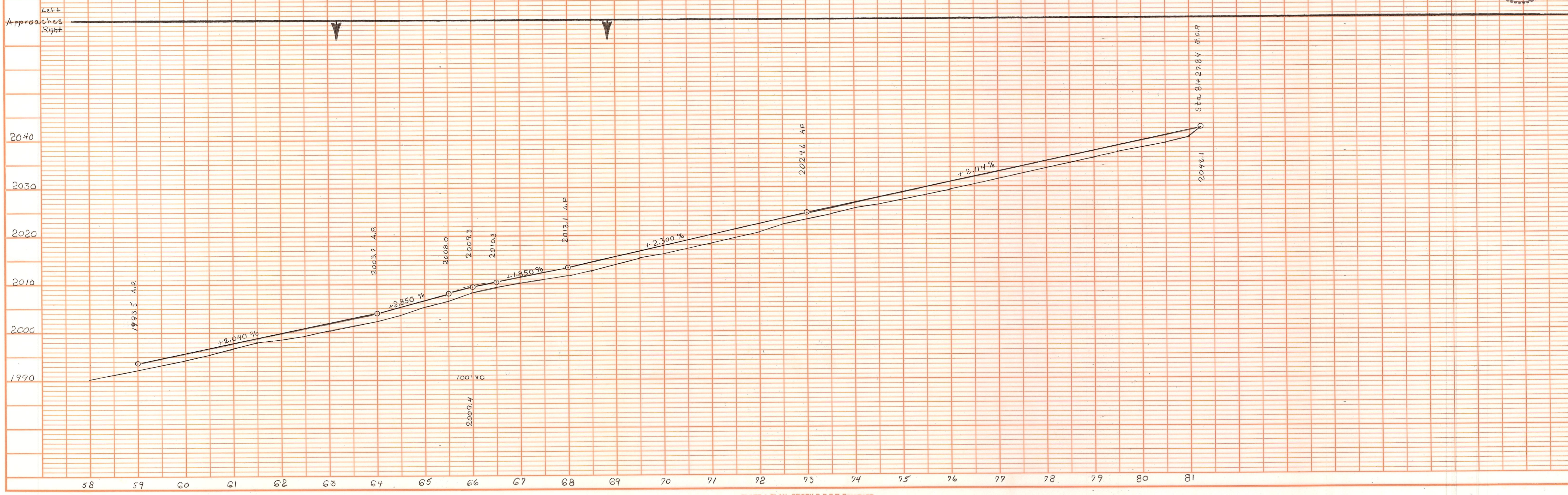
SCALE: $\frac{1}{4}$ " = 100'
 $\frac{1}{8}$ " = 10'

CRP 6-73

DRAWN BY RR DATE Sept 73

APPROVED: 11/12/73 *London C. Blossom*
 DATE

Professional Engineer Seal: LONDON C. BLOSSOM, COUNTY ROAD ENGINEER, PROFESSIONAL ENGINEER



GILBERT RD.

PLATE 1 PLAN-PROFILE B P R STANDARD
 EUGENE DIETZEN CO. CHICAGO - NEW YORK

PLAN

DATE	
BY	
CHECKED	
DESIGNED	
NOTED	
APPROVED	
NO.	

PROFILE

DATE	
BY	
CHECKED	
DESIGNED	
NOTED	
APPROVED	
NO.	