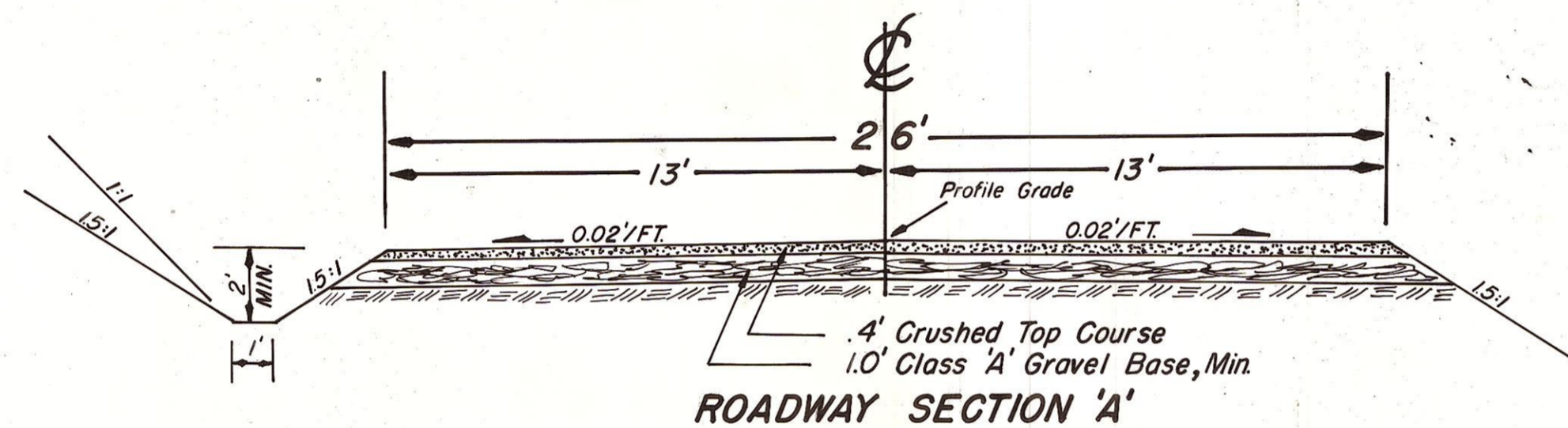
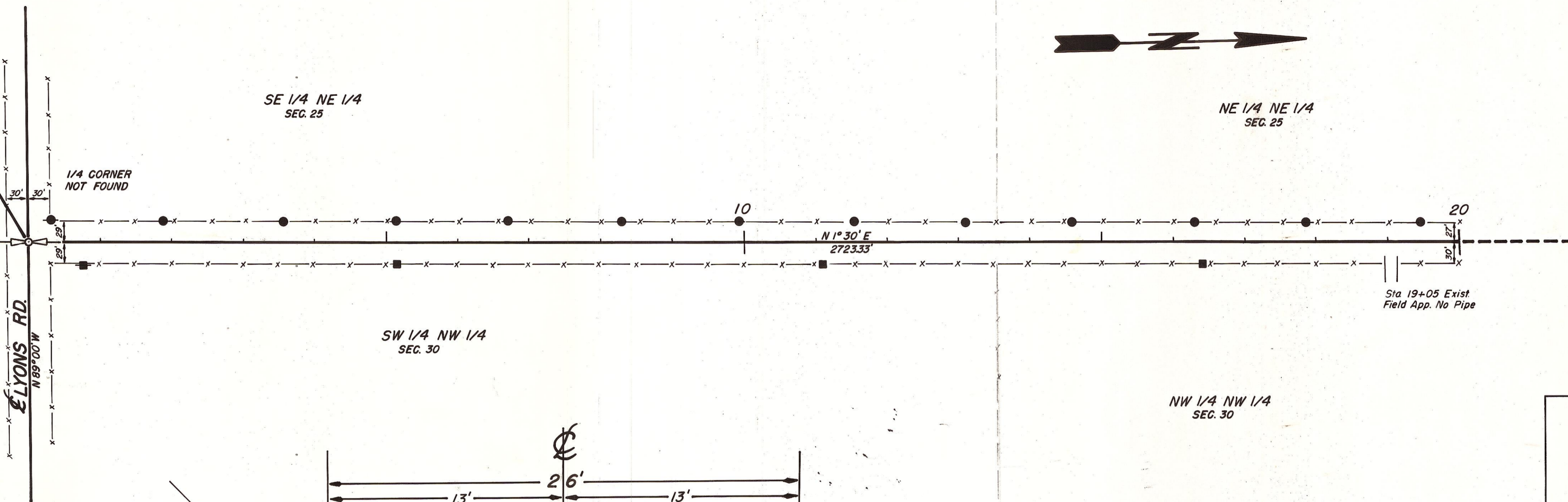


T.18N.R.19 E. W.M.



STA 0+00
BEGINNING OF PROJECT

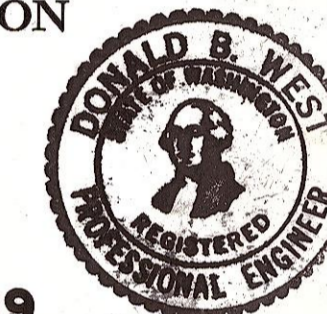
T.18N.R.19 E. W.M.
T.18N.R.20 E. W.M.



OFFICE OF COUNTY ROAD ENGINEER

KITTITAS COUNTY
ELLENSBURG, WASHINGTON

GILBERT RD.
Length - .64 Mile



SCALE: $\frac{H}{V} = \frac{1''}{100'}$
 $\frac{H}{V} = \frac{1''}{10'}$

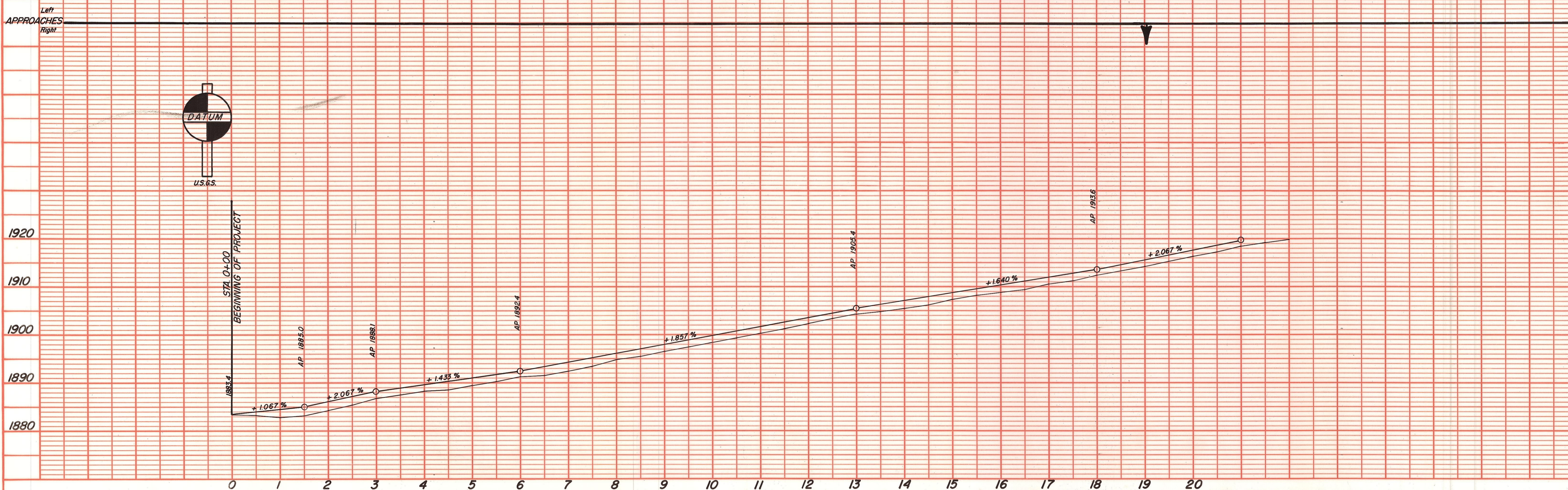
CRP 5-69

DRAWN BY B.S. DATE Jan. 69

SHEET 1 OF 2

APPROVED: _____
DATE _____

Donald B. West
COUNTY ROAD ENGINEER



GILBERT RD.

PLATE 1 PLAN - PROFILE B P R STANDARD
EUGENE SRETZGER CO. CHICAGO - NEW YORK

DATE	
BY	
PLAN	
NO. OF SHEETS	
NO.	
DATE	
BY	
PLANNED	
NOTED	
NO.	

DATE	
BY	
PROFILE	
NO. OF SHEETS	
NO.	
DATE	
BY	
PLANNED	
NOTED	
NO.	