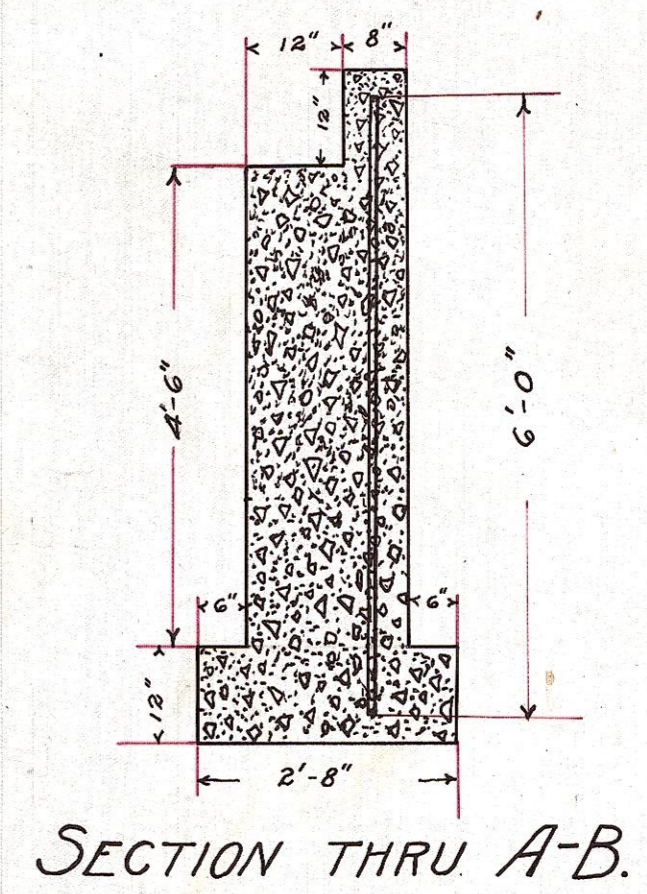
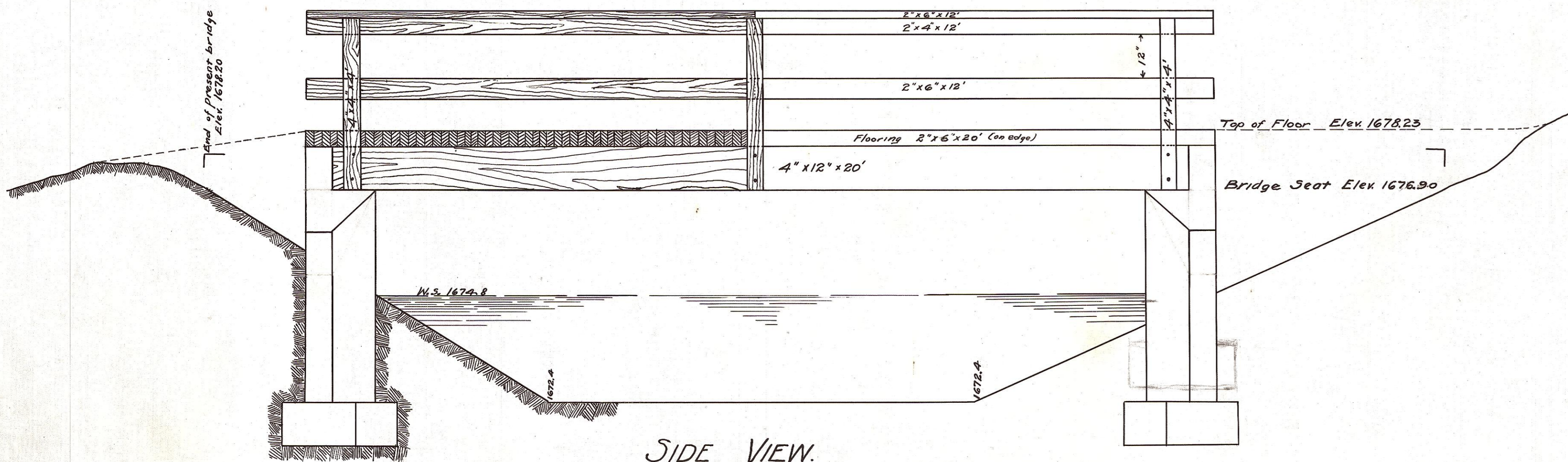
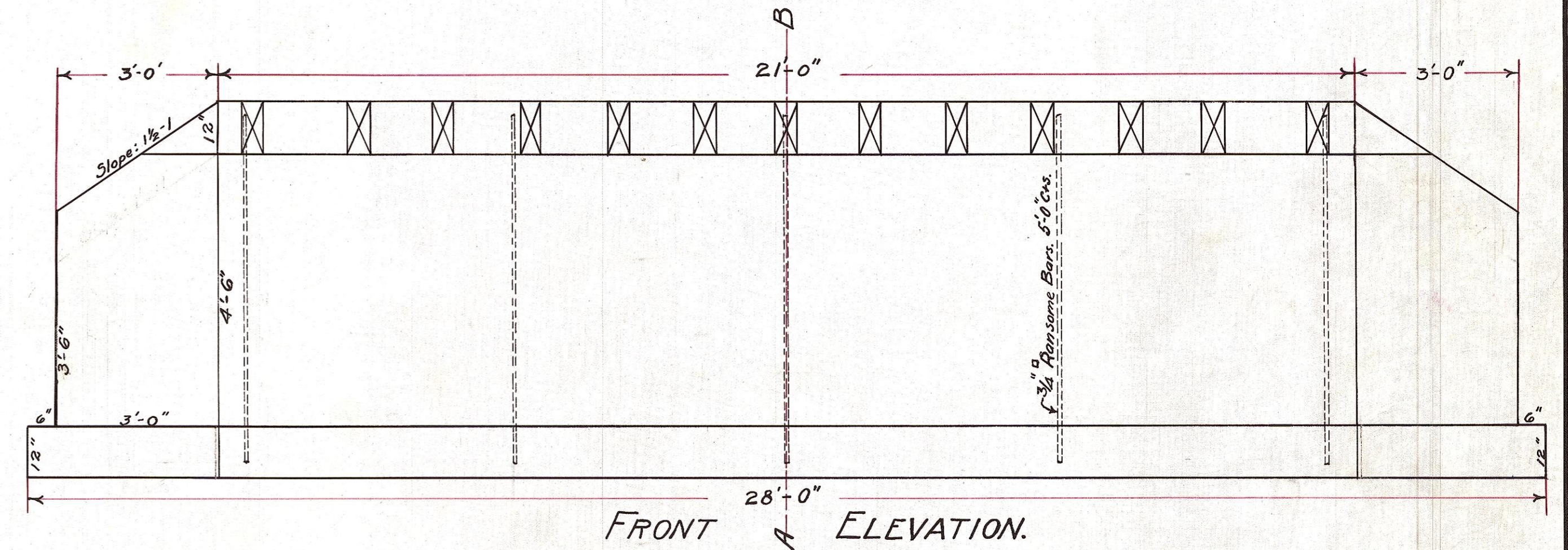


KITTITAS COUNTY,
WASHINGTON.

PLAN OF CASCADE CANAL BRIDGE
NEAR BEATTY RANCH.
ELLENSBURG, WASH. MARCH 6, 1913.

SCALE: 1 IN. = 2 FT.
CORRECT:
Chas. V. Jordan
County Engineer.



BILL OF MATERIAL.

-LUMBER-

13 - 4" x 12" x 20'	1040 F.B.M.
151 - 2" x 6" x 12'	3020 F.B.M.
4 - 2" x 4" x 12'	32 F.B.M.
8 - 2" x 6" x 12'	96 F.B.M.
2 - 4" x 4" x 12'	32 F.B.M.
Total 4,220 F.B.M.	

-IRON-

50# - 40d Nails	
5# - 12d Nails	
12 - 1/2" x 9" Carriage Bolts.	
24 - 1/2" CUT Washers.	
60 ft. 3/4" Ransome Bars.	113.7 lbs.

-CONCRETE-

1:7 MIX.

Cement 82 sacks.
Sand & Gravel. 20.3 Cu. Yds.

16-1-3