

Denmark Rd. No 77
MAP OF
PERMANENT HIGHWAY NO 4B
NEAR
KITITAS, KITITAS COUNTY

Scale 1" = 400'

Approved: Apr. 19, 1916

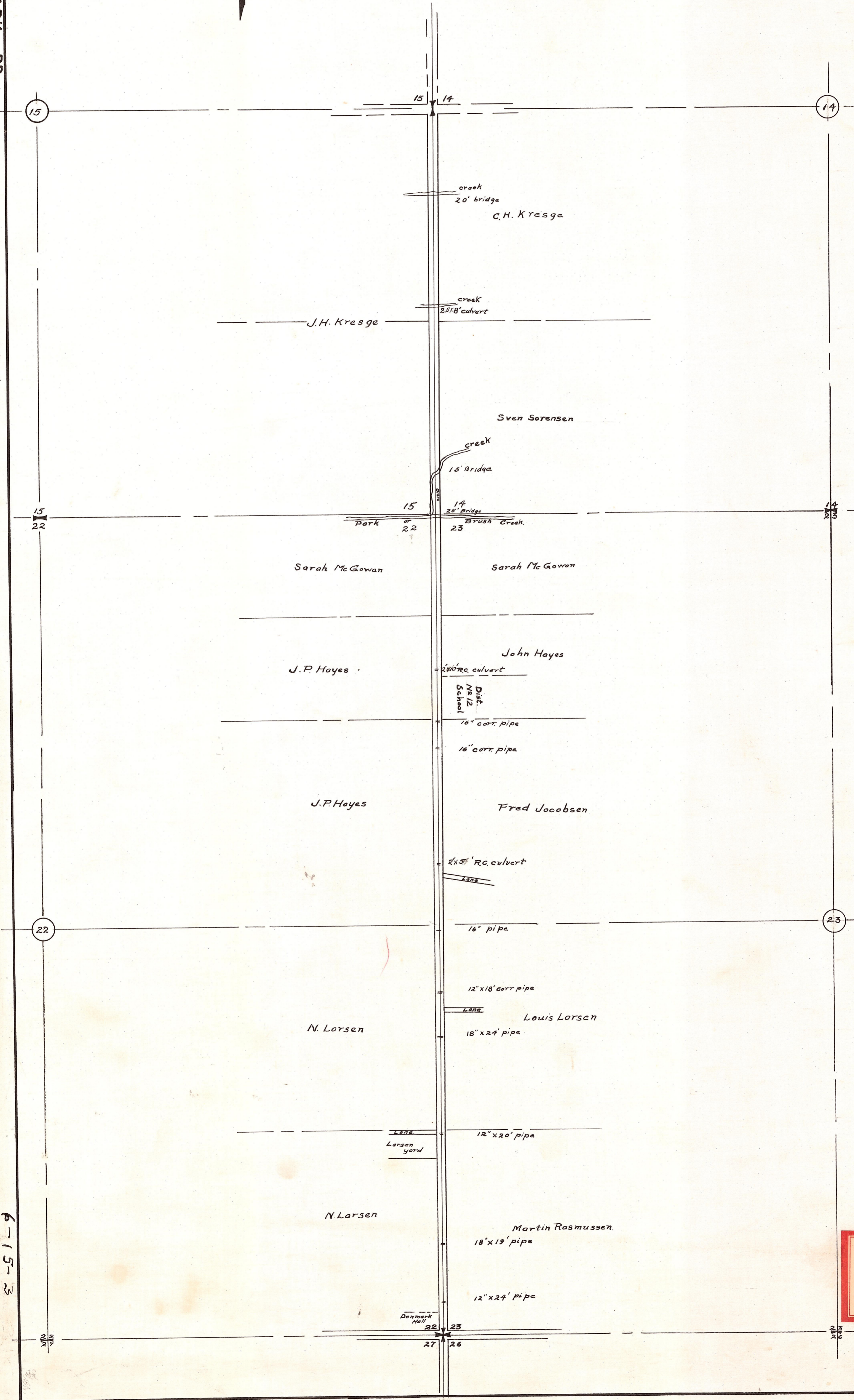
James Allen
Highway Commissioner.



T. 17 N. R. 19 E. W.M.

DENMARK RD.

16-1



6-15-3

11-17-2