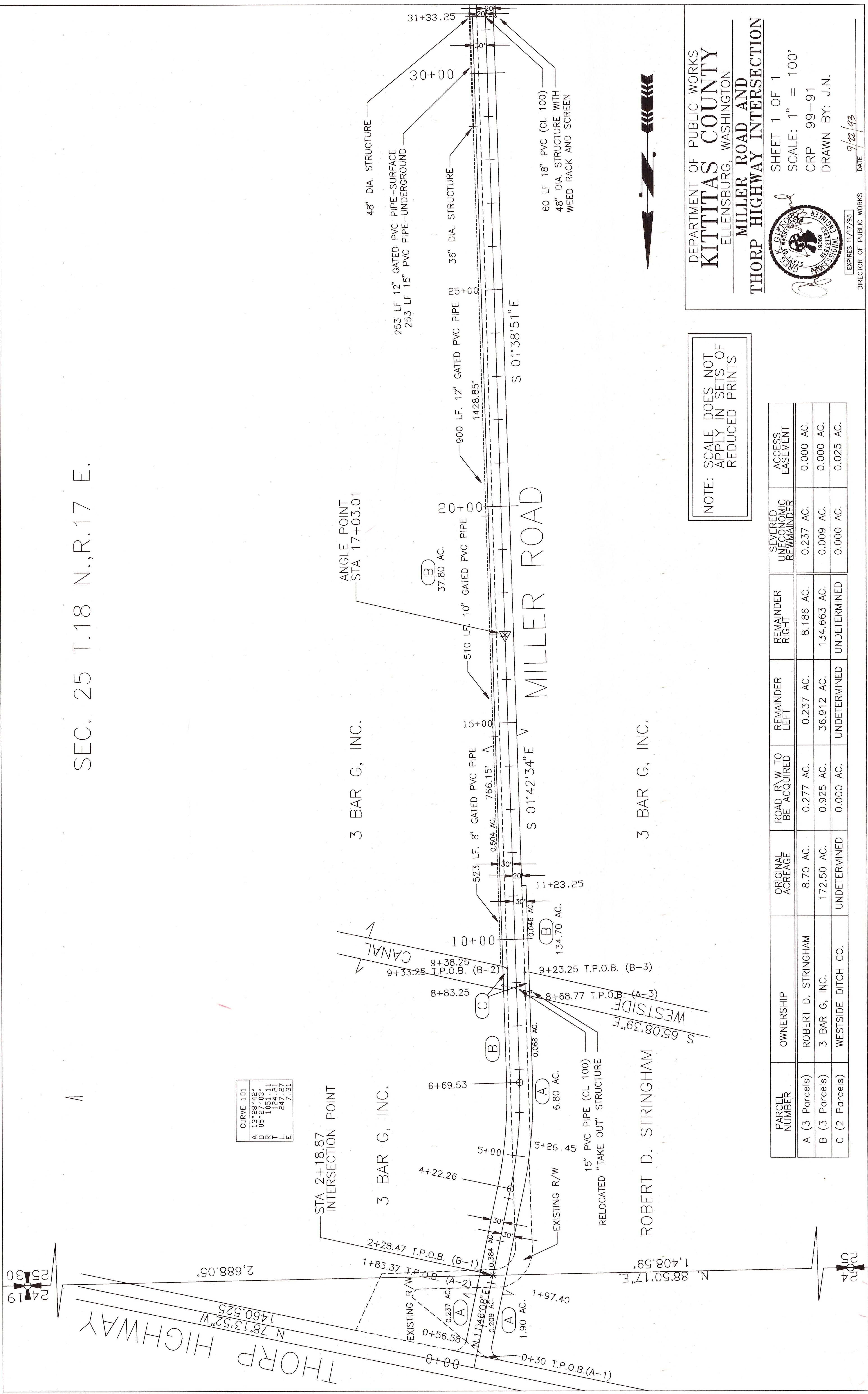


SEC. 25 T.18 N., R.17 E.



NOTE: SCALE DOES NOT APPLY IN SETS OF REDUCED PRINTS

PARCEL NUMBER	OWNERSHIP	ORIGINAL ACREAGE	ROAD R/W TO BE ACQUIRED	REMAINDER LEFT	REMAINDER RIGHT	SEVERED UNECONOMIC REMAINDER	ACCESS EASEMENT
A (3 Parcels)	ROBERT D. STRINGHAM	8.70 AC.	0.277 AC.	0.237 AC.	8.186 AC.	0.237 AC.	0.000 AC.
B (3 Parcels)	3 BAR G, INC.	172.50 AC.	0.925 AC.	36.912 AC.	134.663 AC.	0.009 AC.	0.000 AC.
C (2 Parcels)	WESTSIDE DITCH CO.	UNDETERMINED	0.000 AC.	UNDETERMINED	UNDETERMINED	0.000 AC.	0.025 AC.

DEPARTMENT OF PUBLIC WORKS
KITTITAS COUNTY
 ELLENSBURG, WASHINGTON

MILLER ROAD AND THORP HIGHWAY INTERSECTION

SHEET 1 OF 1
 SCALE: 1" = 100'
 CRP 99-91
 DRAWN BY: J.N.

9/22/93
 DATE

EXPIRES 11/17/93
 DIRECTOR OF PUBLIC WORKS