

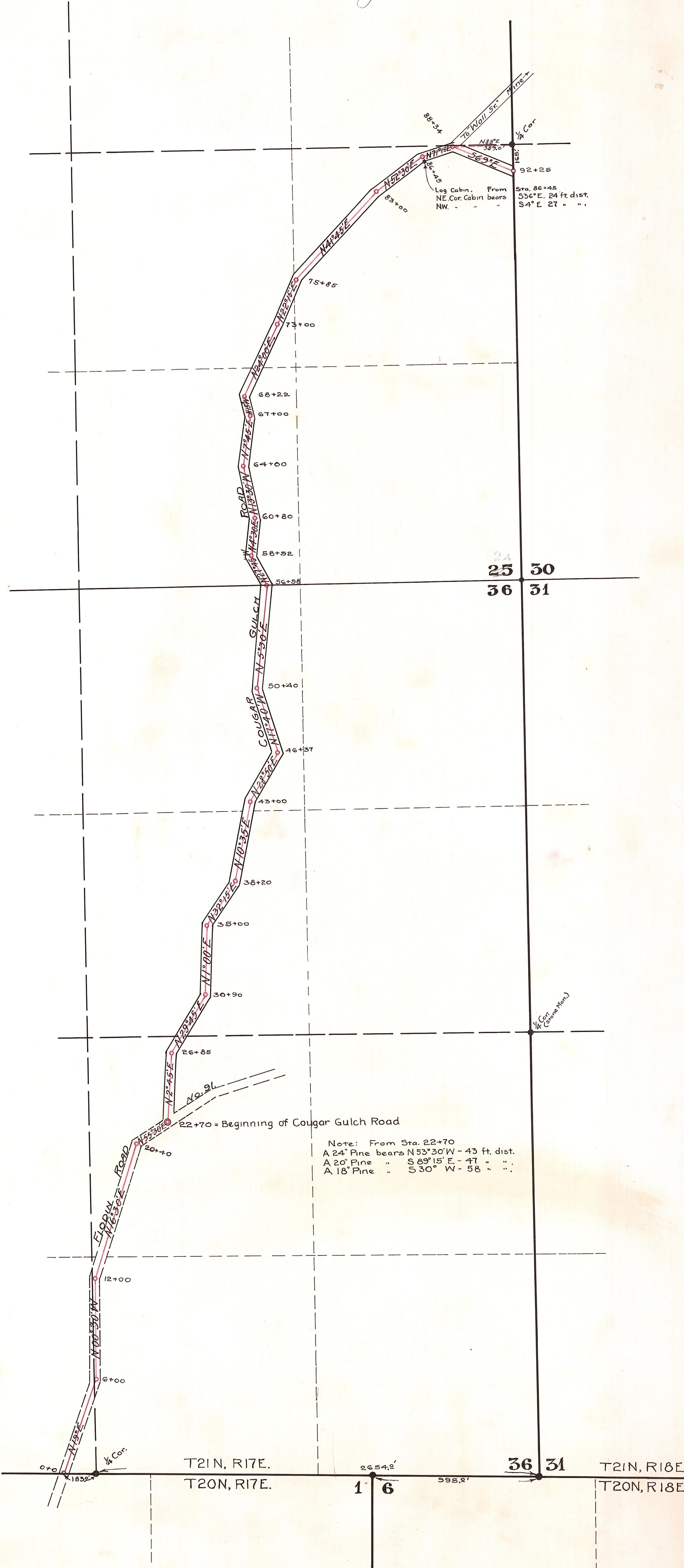
KITTITAS COUNTY,  
WASHINGTON.

MAP SHOWING  
COUGAR GULCH ROAD No.

IN SECS. 36 & 25, T. 21 NORTH, R. 17 EAST W.M.

Scale: 1 inch = 400 feet. Oct 17, 1912.

Chas. F. Jordan  
County Engineer.



Note: From Sta. 22+70  
A 24" Pine bears N53°30'W - 43 ft. dist.  
A 20" Pine " S 89°15' E - 47 " "  
A 18" Pine " S 30° W - 58 " "

25-8-2

FLODIN RD. (CORRECT SECT) 15-40

15-2-3