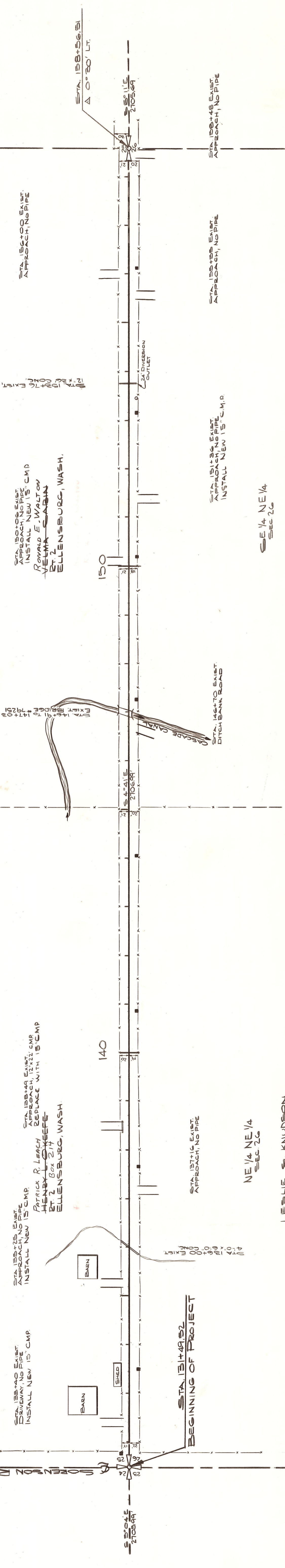


T. 17 NR. 19 E. WM.
Sec. 25

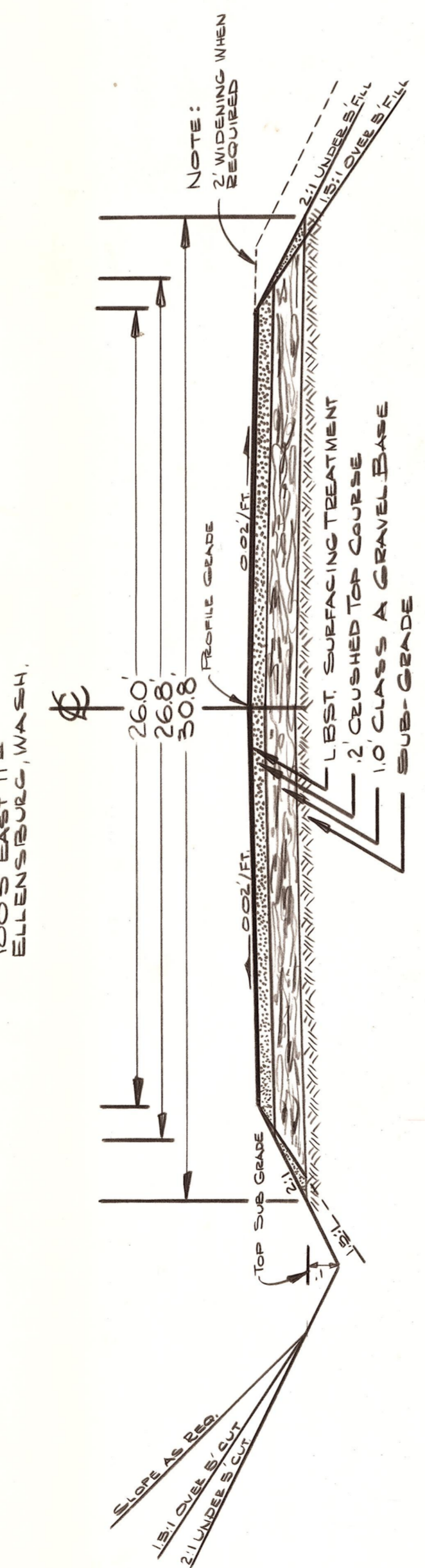
NW 1/4 NW 1/4
Sec. 25

NW 1/4 NW 1/4
Sec. 25



MRS. EMMA HABELL
ET. 2
ELLENBURG, WASH.

LESIE S. KNUDSON
1005 EAST 11^{1/2}
ELLENBURG, WASH.



NOTE:
2. WIDENING WHEN
REQUIRED

SCALE: 1" = 4'

ROADWAY SECTION

SCALE: 1" = 4'

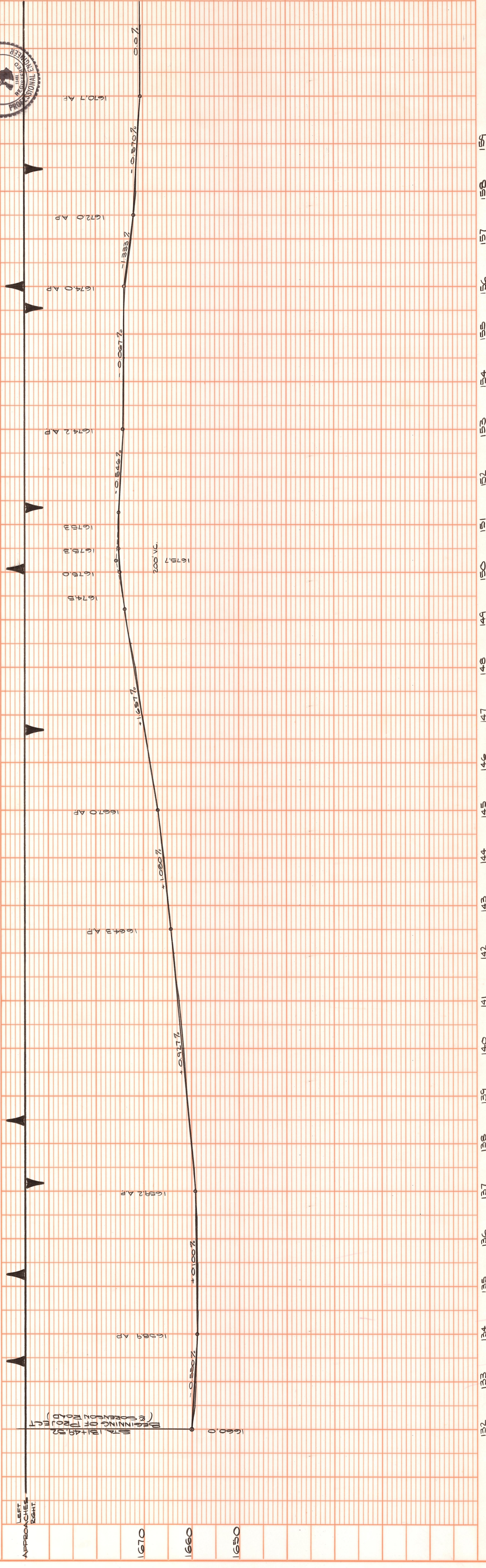
OFFICE OF COUNTY ROAD ENGINEER
KITITAS COUNTY
ELLENBURG, WASHINGTON
CLEMAN ROAD
LENGTH: 1.03 MILE

SCALE: H 1" = 100'
V 1" = 10'

DRAWN BY: SAY DATE: Nov. 1972 SHEET 1 OF 2

APPROVED: 12/27/72 DATE: [Signature] COUNTY ROAD ENGINEER

No.	Owner's Name	Date	Revision	By
1-12-77	Owners' Maps			D.J.L.
3-20-78	Length of Project			D.J.L.



132 133 134 135 136 137 138 139 140 141 142 143 144 145 146 147 148 149 150 151 152 153 154 155 156 157 158 159

CLEMAN RD.

PLAN

DATE	BY

NOTE BOOK

NO.	REVISIONS

PROFILE

DATE	BY

NOTE BOOK

NO.	REVISIONS

T. 17 N. R. 19 E. W.M.
SEC. 25

N. 1/4 SW 1/4
SEC. 25

JOHN J. EDENSON
ET. 2
ELLENBURG, WASH.

STA 158+00 TO EXIST.
APPROACH, NO PIPE

STA 158+56.51
Δ 0' 30" LT.

170

STA 171+85 EXIST.
APPROACH, NO PIPE

180

PAUL W. KAMINSKY
ET. 2
ELLENBURG, WASH.

STA 174+00 EXIST.
APPROACH, NO PIPE

STA 185+62.20
END OF PROJECT

JOHN H. PETERS
ET. 2
ELLENBURG, WASH.

167
168
169
170
171
172
173
174
175
176
177
178
179
180
181
182
183
184
185

STA 162+40 EXIST.
APPROACH, NO PIPE

NE 1/4 SE 1/4
SEC. 26

IVA E. STEIGLEDER
ET. 2
ELLENBURG, WASH.

STA 172+23 EXIST.
APPROACH, NO PIPE

SE 1/4 SE 1/4
SEC. 26

IVA E. STEIGLEDER
ET. 2
ELLENBURG, WASH.

OFFICE OF COUNTY ROAD ENGINEER
KITITAS COUNTY
ELLENBURG, WASHINGTON
CLEMAN ROAD
LENGTH: 1.03 MILE

SCALE: H 1/100
V 1/10

CRP 9-73

SHEET 2 OF 2

DRAWN BY SA DATE Nov. 1972

APPROVED: 12/27/72 DATE



PLAN	NO.	NOTE BOOK
BY	DATE	REVISIONS
		1. BY DATE
		2. BY DATE
		3. BY DATE
		4. BY DATE
		5. BY DATE
		6. BY DATE
		7. BY DATE
		8. BY DATE
		9. BY DATE
		10. BY DATE

PROFILE	NO.	NOTE BOOK
BY	DATE	REVISIONS
		1. BY DATE
		2. BY DATE
		3. BY DATE
		4. BY DATE
		5. BY DATE
		6. BY DATE
		7. BY DATE
		8. BY DATE
		9. BY DATE
		10. BY DATE

