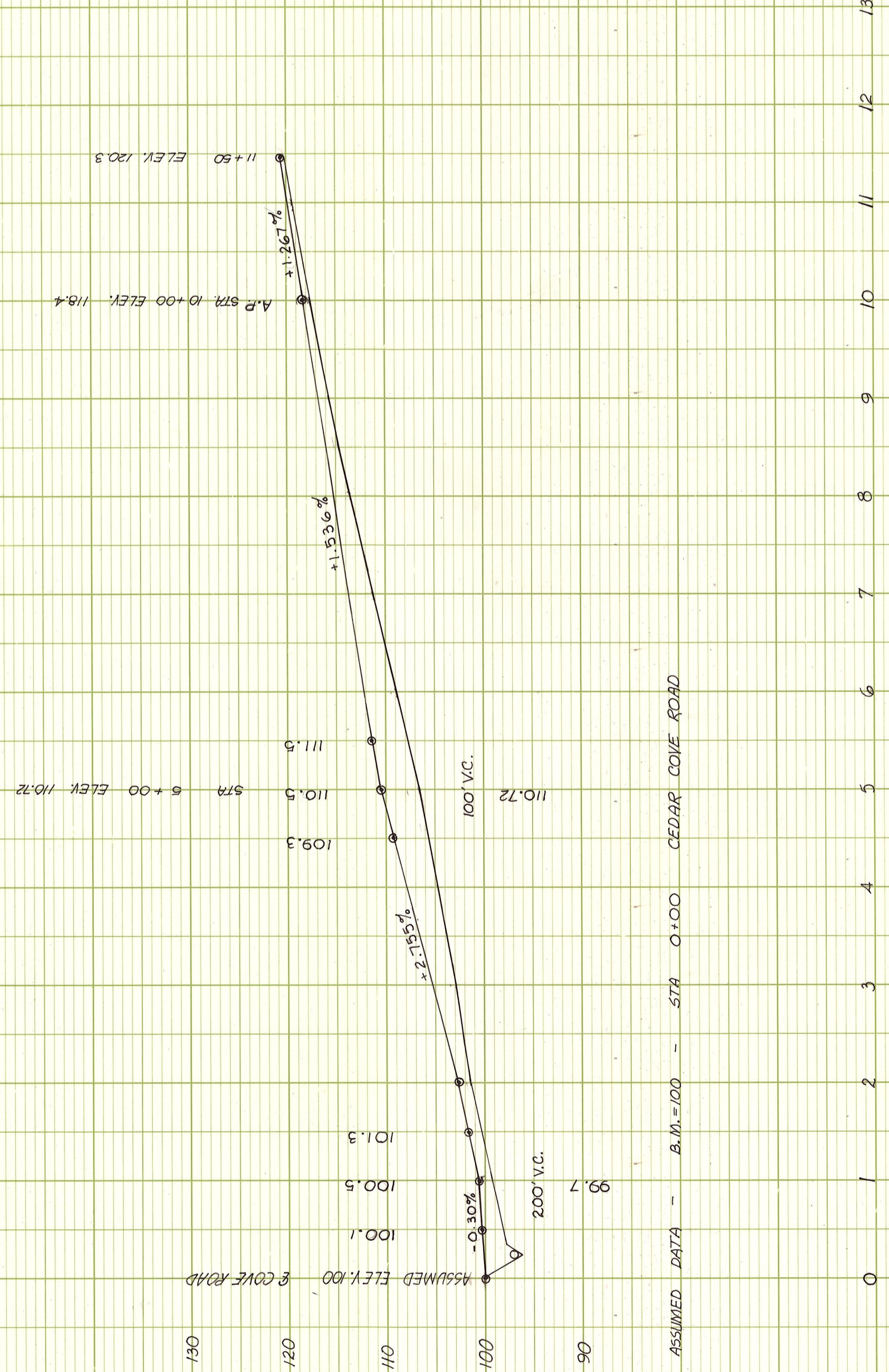
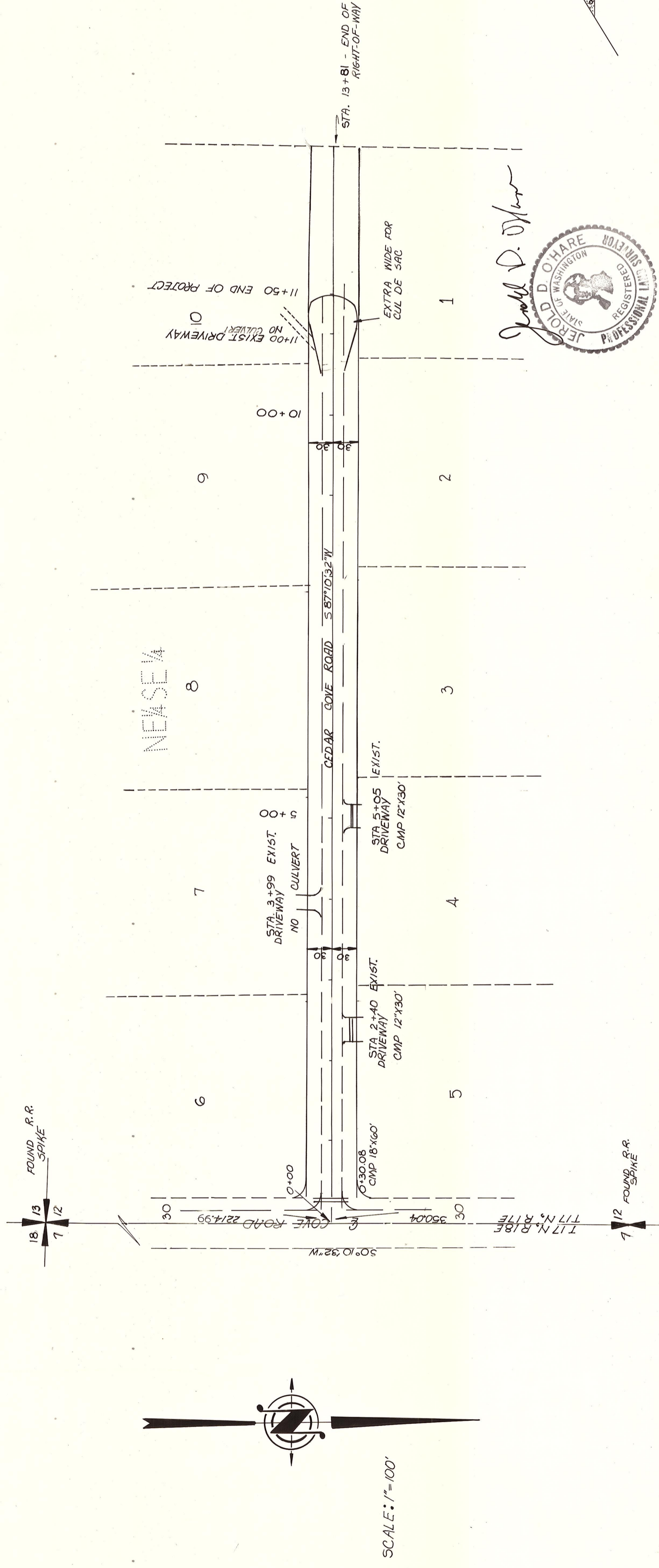
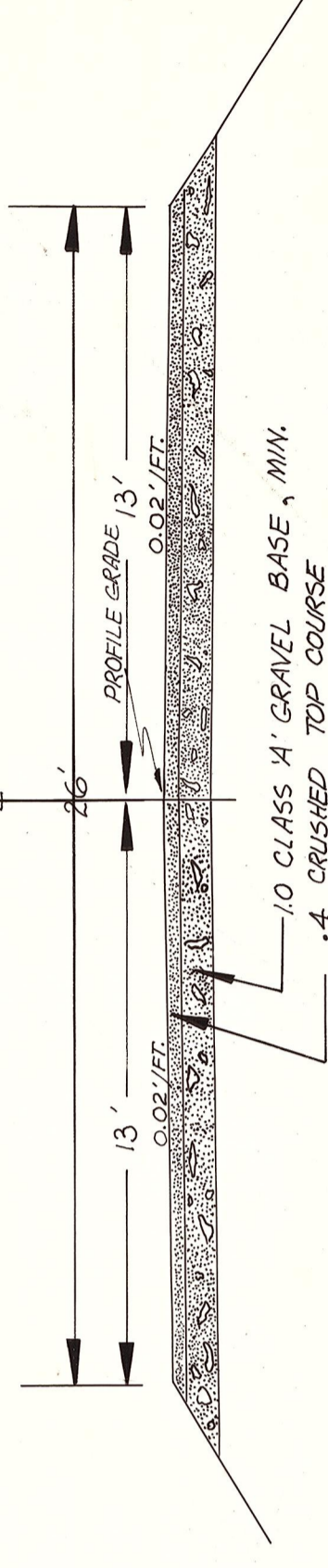
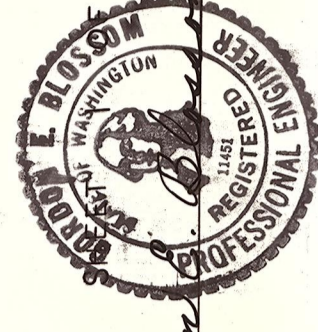


T.17 N. R. 17 E. W.M.
SEC. 12

CEDAR COVE

KITTITAS COUNTY
ELLENSBURG, WASHINGTON
CEDAR COVE ROAD

SCALE: H $\frac{1}{2}$ " = 100
V 1" = 10
DRAWN BY *JD* DATE 10-9-74
APPROVED: *J. D. O'Hare*



PLAN	
DATE	BY
DRAWN	
CHECKED	
IN CHARGE	

PROFILE	
DATE	BY
DRAWN	
CHECKED	
IN CHARGE	