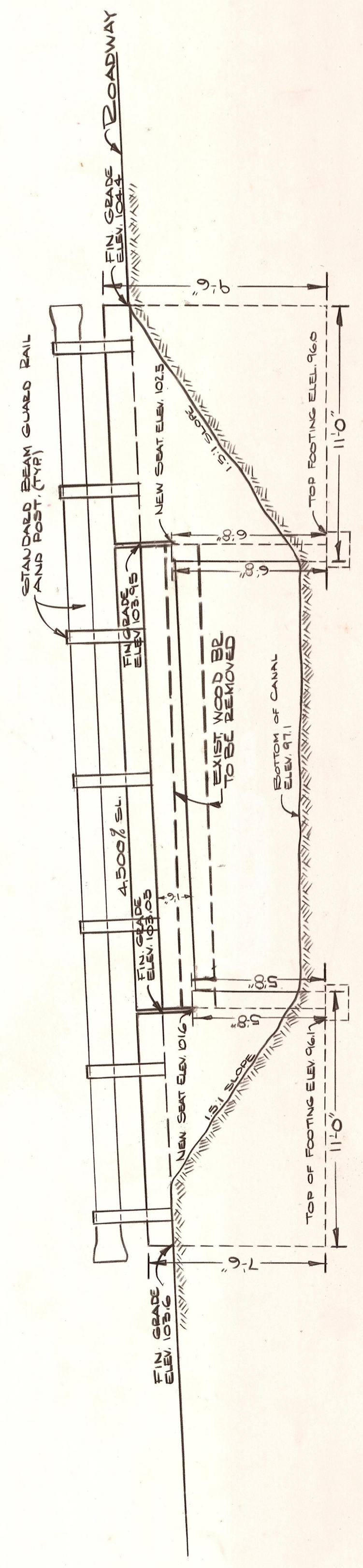
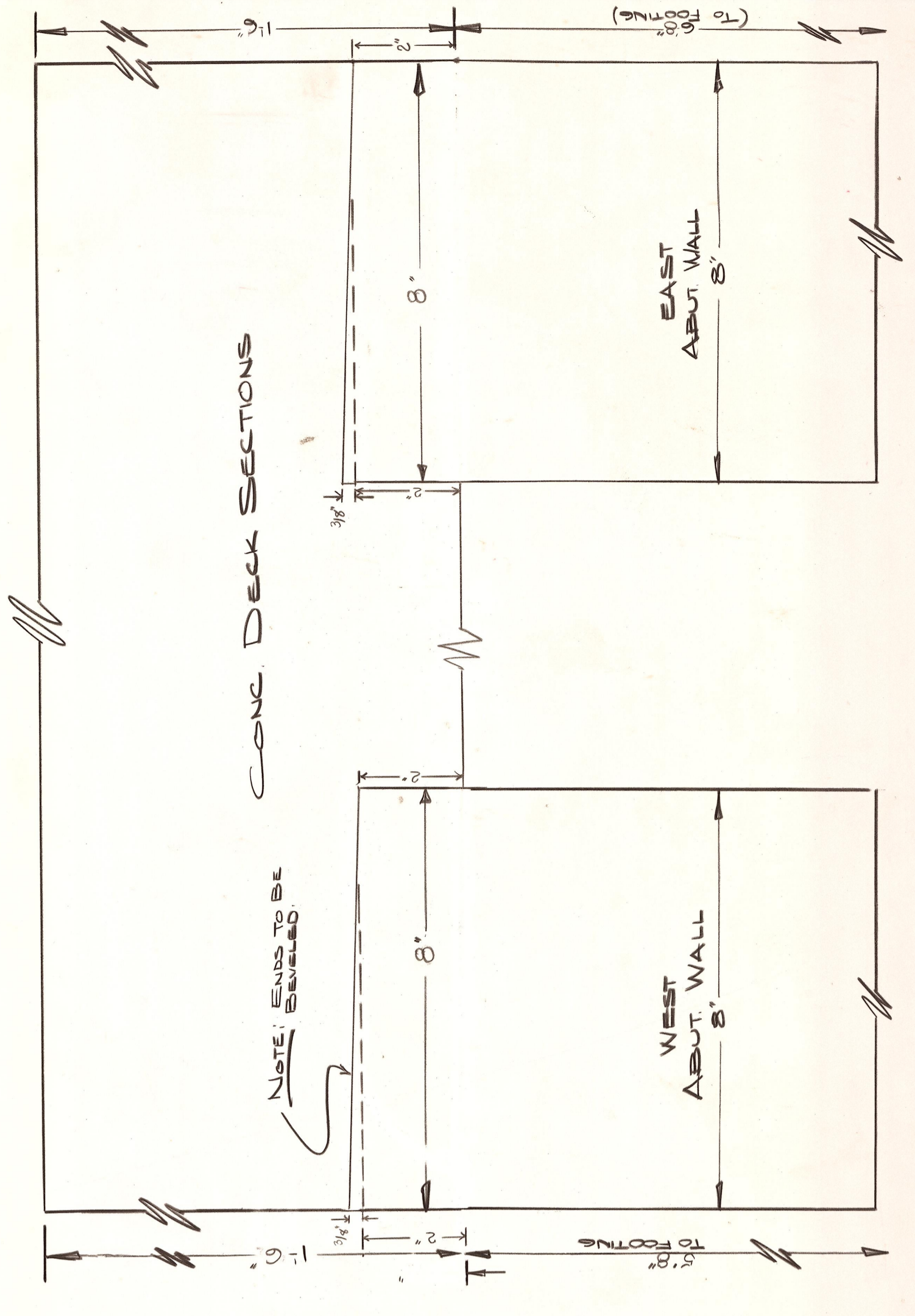


PLAN
SCALE: 1/2" = 1'-0"

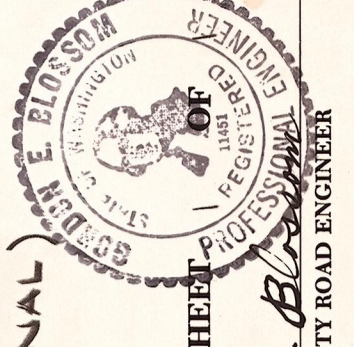


ELEVATION
SCALE: 1/2" = 1'-0"



DECK DETAIL
SCALE: 1/2" = 6"

OFFICE OF COUNTY ROAD ENGINEER
KITTITAS COUNTY
 ELLENSBURG, WASHINGTON
CARROLL ROAD BRIDGE
 # 70181
 (OVER CASCADE CANAL)
 SCALE: 1/2" = 6" CRP
 DRAWN BY SAY DATE JAN, 1974 SHEET 1 OF 1
 APPROVED: *Robert L. Blum* DATE 2/17/74 COUNTY ROAD ENGINEER



DATE	REVISIONS	BY
1-23-75	REMOVED ANGLE IRON BRACE	RR
1-23-75	ABUT. WALL & DECK DETAIL	RR