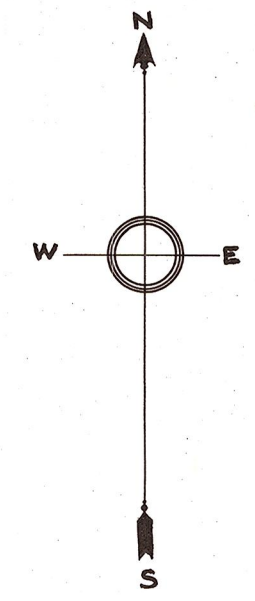


PLAT OF
H. B. CARROLL ROAD
 SURVEYED OCT. 9, 1916.
 MOSES M. EMERSON, CO. ENGINEER.



JERRY SULLIVAN

A. F. SCHULTZ

H. HUTCHINSON

A. C. MASSIE

HENRY KLEINBERG.

J. B. DAVIDSON

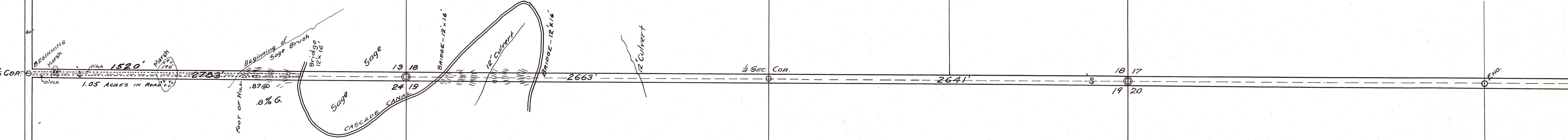
H. B. CARROLL

N. P. RY. CO.

M. McMANUS.

T 17 N. R 19 E. T 17 N. R 20 E.

Scale: - 400' = 1 inch



15-1-6 CARROLL RD.

15-2

23-8-2

10-21