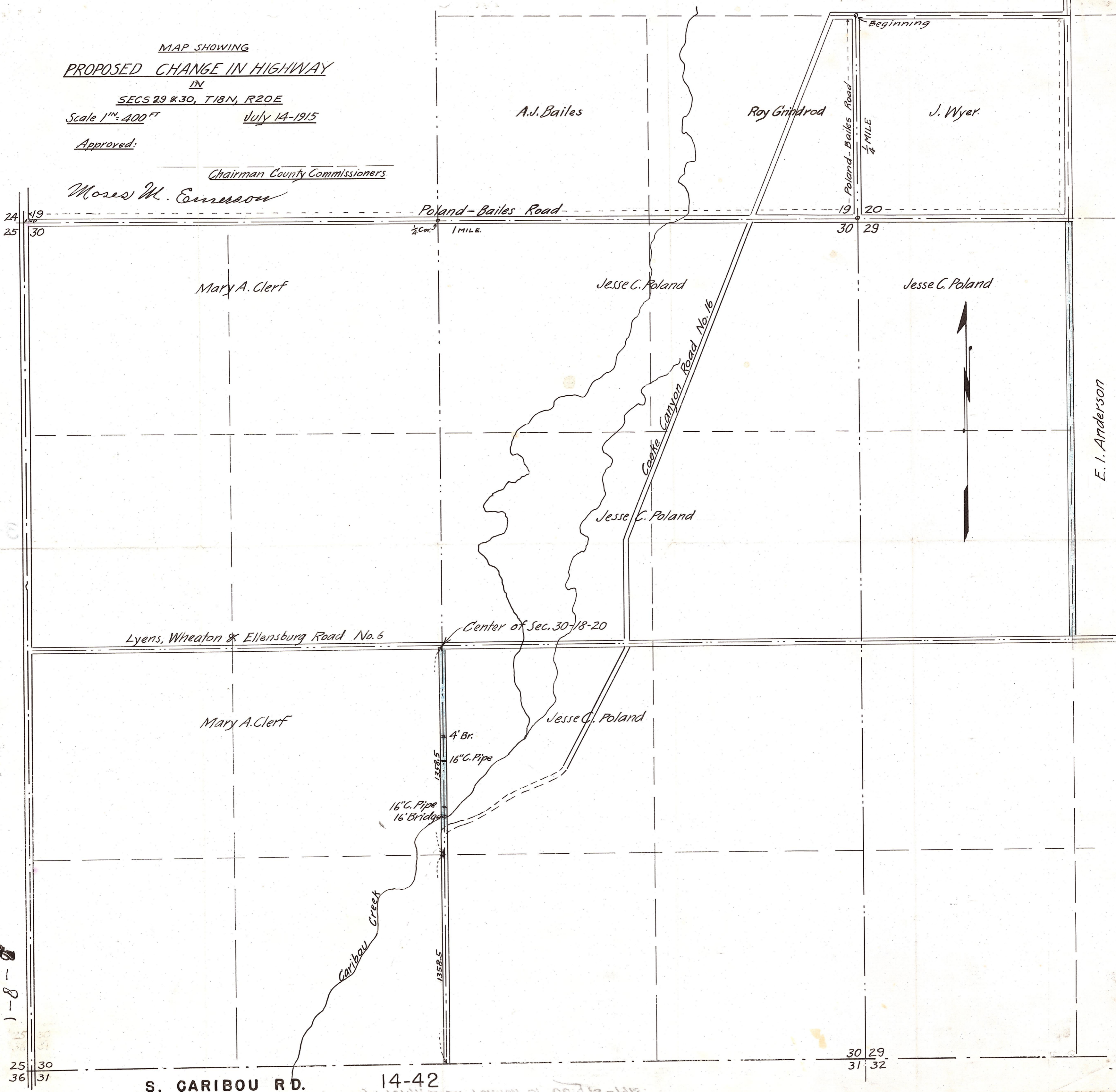


MAP SHOWING
PROPOSED CHANGE IN HIGHWAY
 IN
SECS 29 & 30, T18N, R20E
 Scale 1" = 400 FT July 14-1915

Approved:

 Chairman County Commissioners
 Moses M. Emerson



E. I. Anderson

11-8

1-8-0

S. CARIBOU RD. 14-42