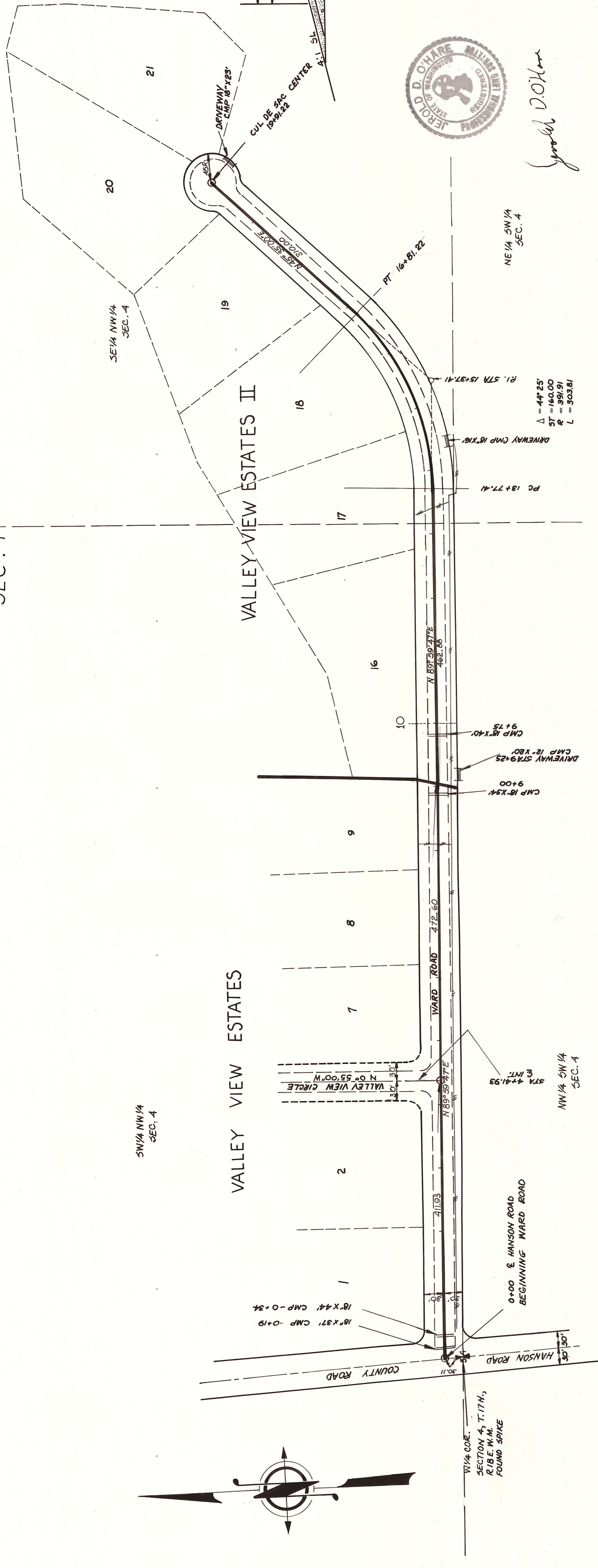


T. 17 N., R. 18 E.
SEC. 4



KITTITAS COUNTY
ELLENSBURG, WASHINGTON
WARD ROAD
LENGTH .38 MILE

SCALE: H 1"=100'
DRAWN BY: *ad* DATE: 2/21/74
APPROVED: *8/28/74* DATE

CRP

JEFF D. O'HARE
REGISTERED PROFESSIONAL ENGINEER
KITTITAS COUNTY ENGINEER



OF 1



DATUM ASSUMED
B.M. = 100 W. 1/4 SECTION 4, TOWNSHIP 17 NORTH, RANGE 18 EAST

DATE	BY	REVISION

DATE	BY	REVISION