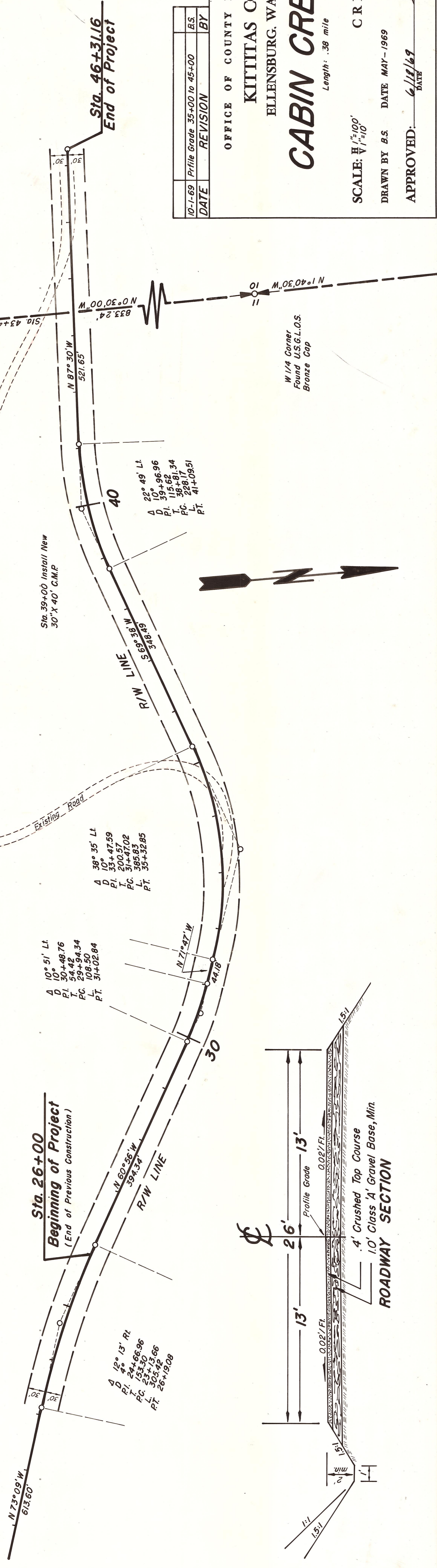


T. 20 N.R. 13 E. W.M.



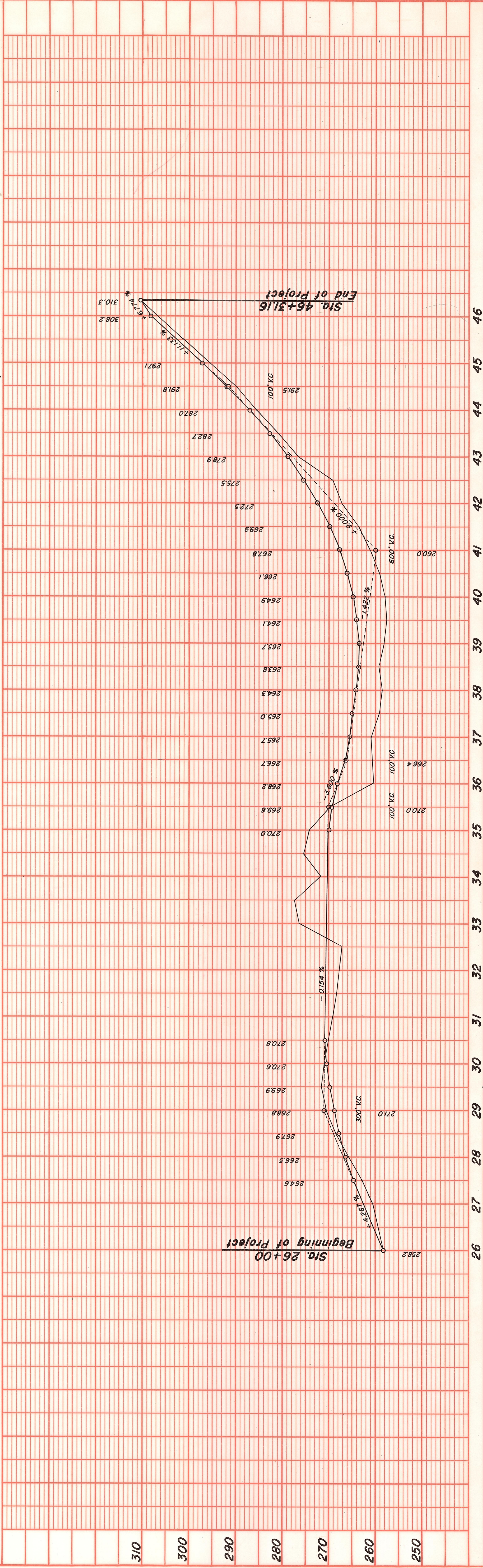
OFFICE OF COUNTY ROAD ENGINEER
 KITTITAS COUNTY
 ELLENSBURG, WASHINGTON

CABIN CREEK RD
 Length: .38 mile

SCALE: H $\frac{1}{2}$ "=100'
 V $\frac{1}{2}$ "=10'

DRAWN BY B.S. DATE MAY-1969 SHEET 1 OF 1
 APPROVED: *Edward J. Blum* COUNTY ROAD ENGINEER

DATE	REVISION	BY
10-1-69	Profile Grade 35+00 to 45+00	B.S.



NO.	DATE	BY

NO.	DATE	BY

NO.	DATE	BY

NO.	DATE	BY