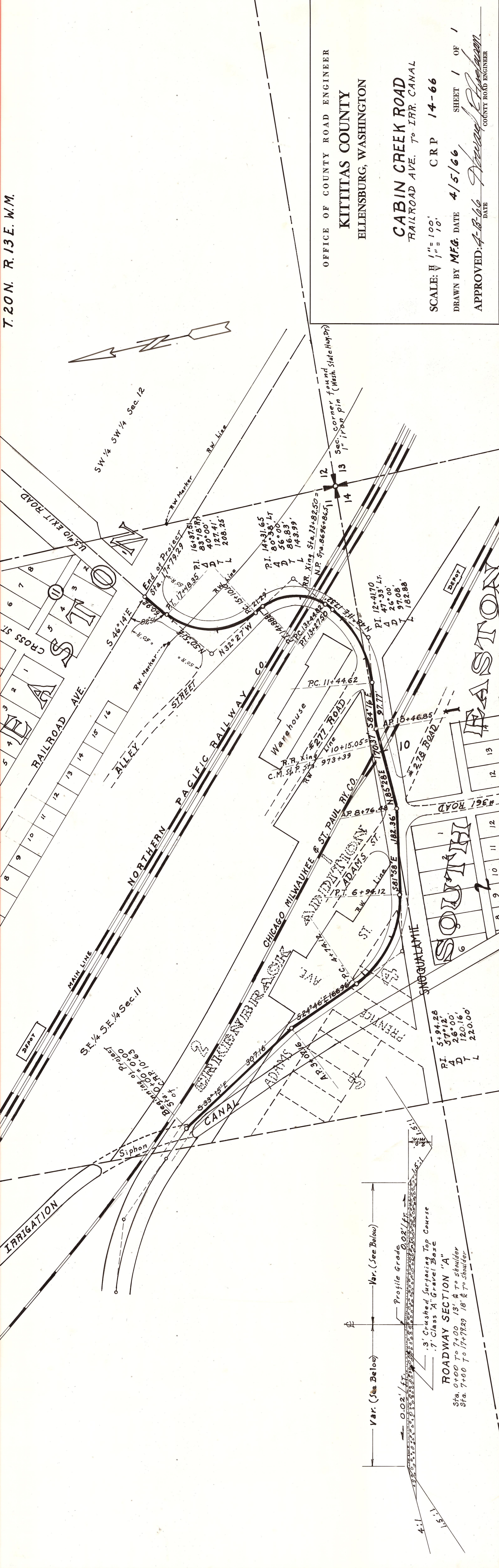


T.20 N. R.13 E. W.M.



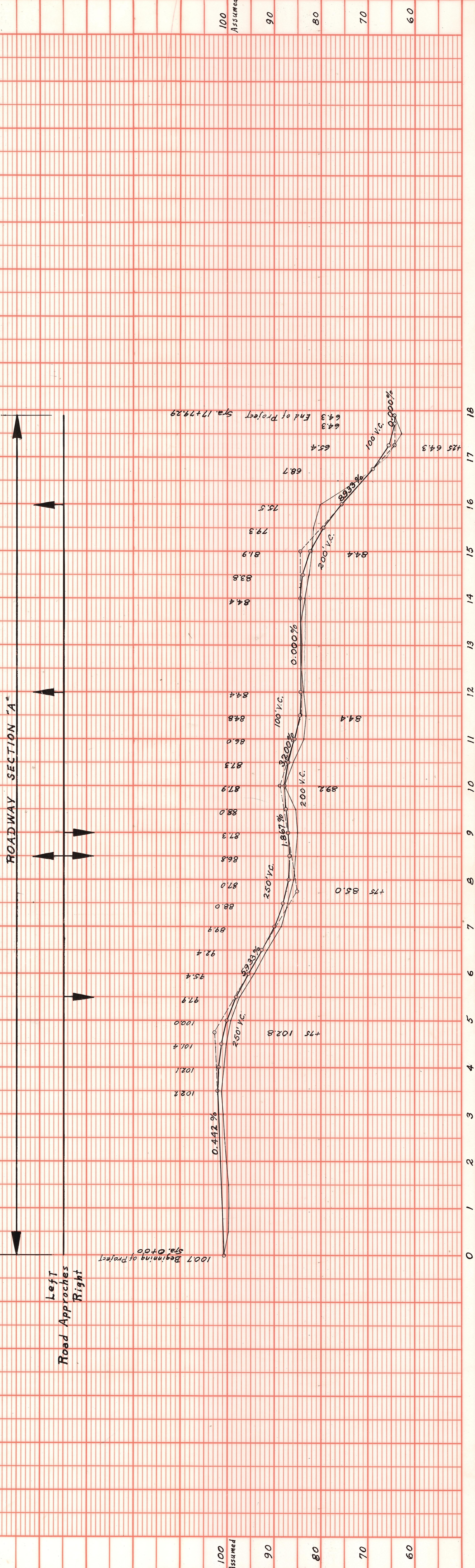
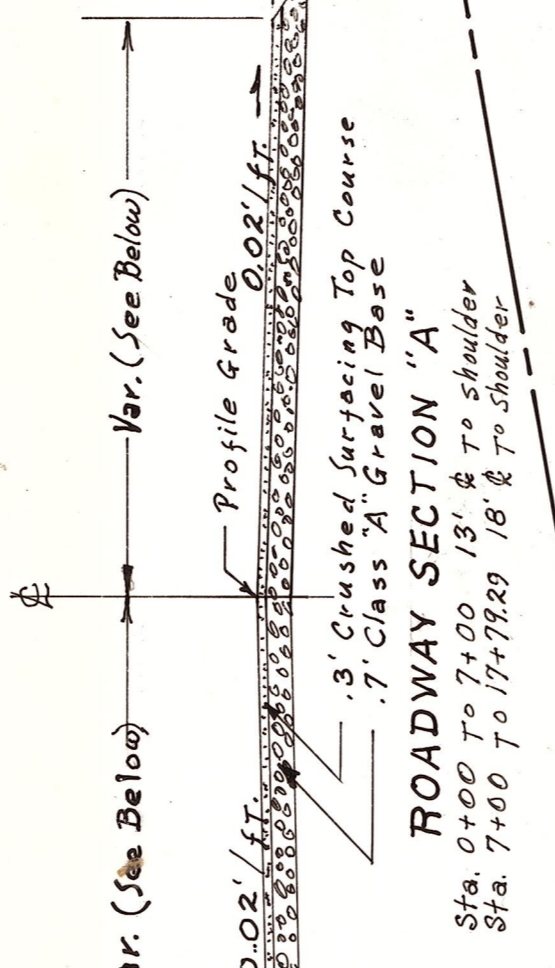
OFFICE OF COUNTY ROAD ENGINEER
KITTITAS COUNTY
 ELLENSBURG, WASHINGTON

CABIN CREEK ROAD
 RAILROAD AVE. 7th IRR. CANAL

SCALE: H 1" = 100'
 V 1" = 10'

DRAWN BY MFG. DATE 4/5/66 SHEET 1 OF 1

APPROVED: *A. B. Ball* DATE 4/5/66 COUNTY ROAD ENGINEER



PLAN	
NO.	
DATE	
BY	
SURVEYED	
ALIGNED & CHECKED	
NOTE BOOK	
PLOTTED	
CHECKED	
BY	
DATE	

PROFILE	
NO.	
DATE	
BY	
SURVEYED	
ALIGNED & CHECKED	
NOTE BOOK	
PLOTTED	
CHECKED	
BY	
DATE	