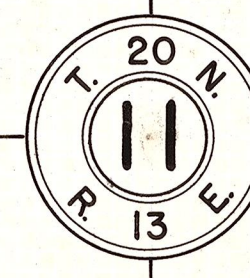


QTR. COR. FOUND  
TYPE A - 1" Ø IRON  
PIPE WITH BRASS CAP  
192

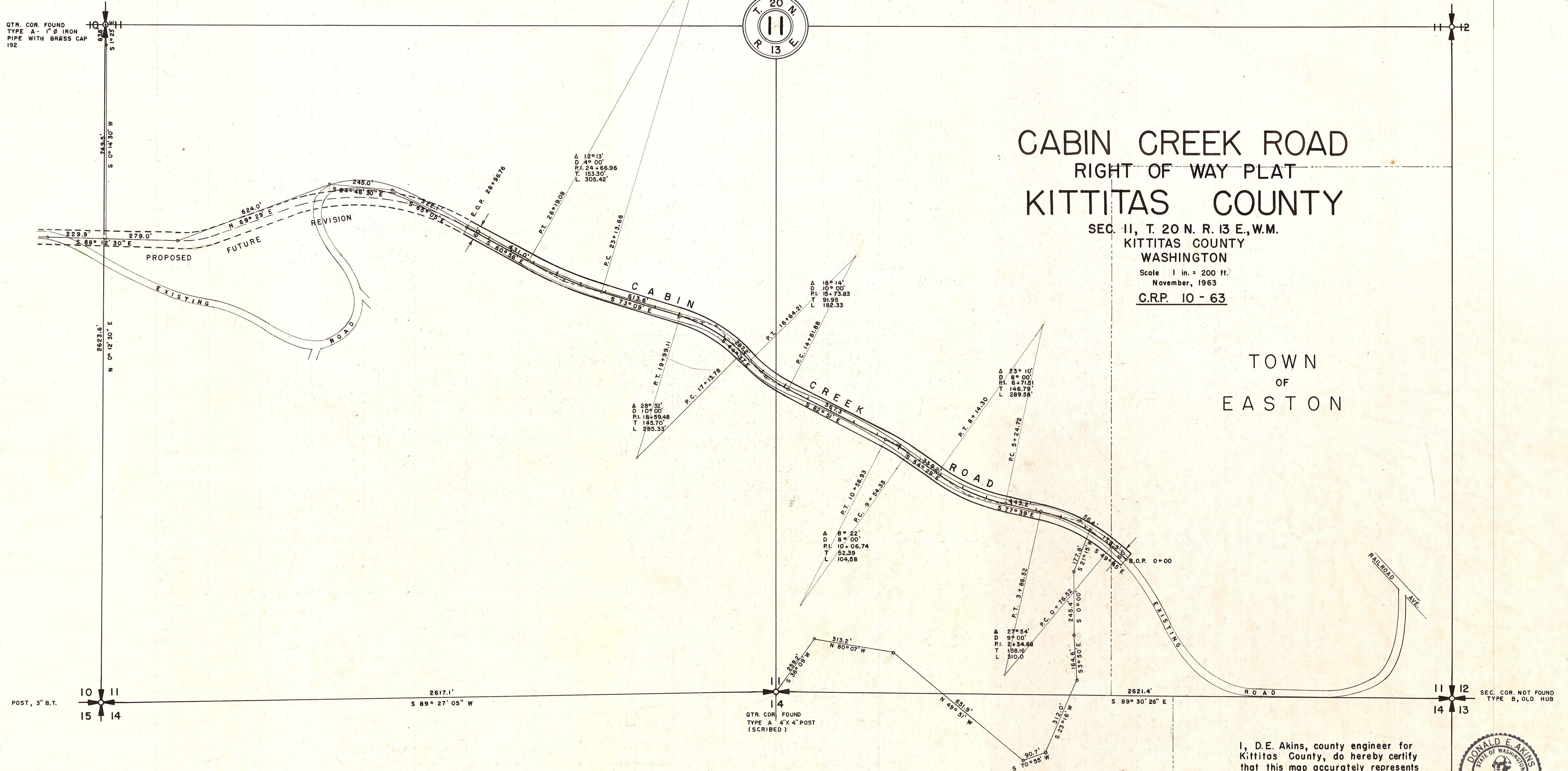


# CABIN CREEK ROAD RIGHT OF WAY PLAT KITTTAS COUNTY

SEC. 11, T. 20 N. R. 13 E., W.M.  
KITTTAS COUNTY  
WASHINGTON

Scale 1 in. = 200 ft.  
November, 1963  
C.R.P. 10 - 63

TOWN  
OF  
EASTON



POST, 3" B.T.  
10 11  
15 14

2617.1'  
S 89° 27' 05" W

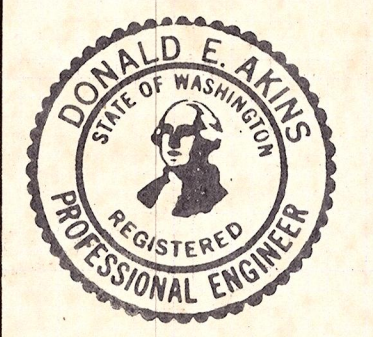
QTR. COR. FOUND  
TYPE A 4" X 4" POST  
(SCRIBED)  
14

2621.4'  
S 89° 30' 26" E

SEC. COR. NOT FOUND  
TYPE B, OLD HUB  
11 12  
14 13

I, D.E. Akins, county engineer for  
Kittitas County, do hereby certify  
that this map accurately represents  
the location of said county's Cabin  
Creek road as it crosses the S. 1/2  
Sec. 11, T. 20 N., R. 13 E., W.M.,  
Kittitas County.

*D.E. Akins*  
Kittitas County Engineer



Seal