

Cross Section at Crown

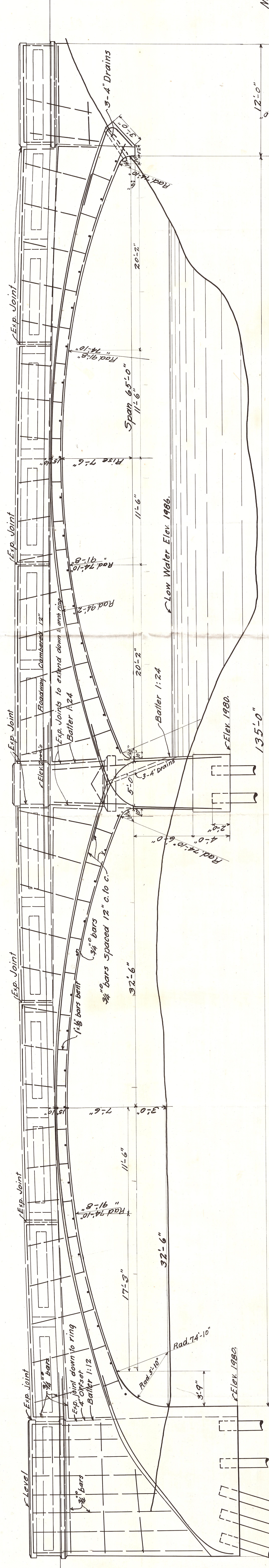
Note: All exposed surfaces shall have a finish produced by spacing the concrete next to the forms, and all exposed surfaces, except the under side of arch ring, shall be rubbed with a Carborundum stone until a smooth and even finish is obtained.

OFFICE OF
STATE HIGHWAY COMMISSIONER
OLYMPIA, WASHINGTON

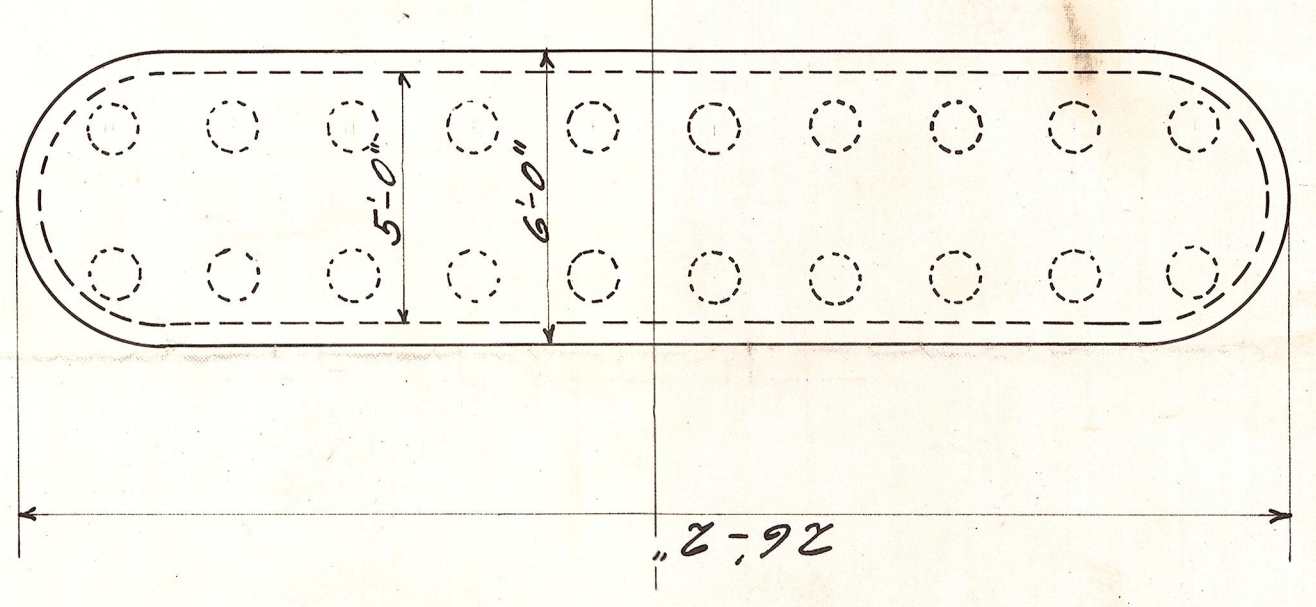
SUNSET HIGHWAY
KITITAS COUNTY
OLE ELUM TO EASTON
PLAN OF

REINFORCED CONCRETE ARCH BRIDGE
OVER OLE ELUM RIVER
SCALE: 1 INCH = 4 FEET
SEPT. 28, 1915

APPROVED:
W. J. Boy
HIGHWAY COMMISSIONER



Section on C.L. of Roadway



Foundation Plan

Center Line of Bridge and Roadway