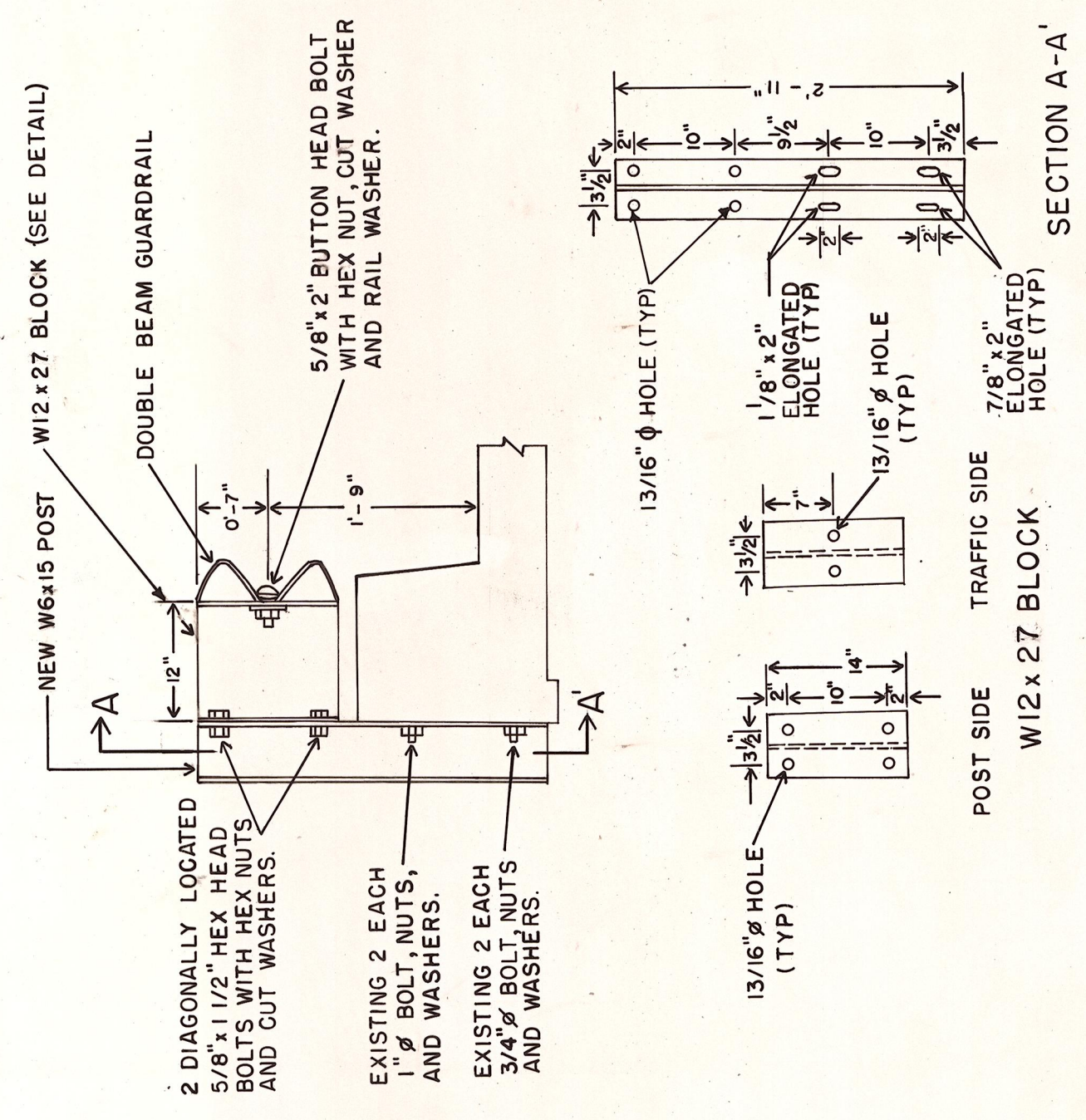


BROWN ROAD  
BRIDGE NO. 78041

QUANTITIES

DESCRIPTION	250.0 LINEAL FEET	28 EACH	1 EACH	175 LINEAL FEET	17 YDS <sup>3</sup>	22 YDS <sup>3</sup>	75 LINEAL FEET	3 EACH	5 YDS <sup>3</sup>
TYPE I GUARDRAIL INCLUDING TERMINAL SECTION BRIDGE GUARDRAIL POST TYPE 3 AND BLOCK									
WEAK POST W-BEAM GUARDRAIL ANCHORAGE									
DOUBLE BEAM GUARDRAIL									
EMBANKMENT									
DITCH EXCAVATION									
LINEAL FENCE REMOVAL AND RELOCATION									
TYPE I ANCHOR									
TOP COURSE, IN PLACE									



GUARDRAIL POST & BLOCK TYPE 3  
SCALE 3/4" = 1'-0"

NOTE 1  
REMOVE EXISTING STEEL POST AND REPLACE WITH 8" x 8" WOOD POSTS AND STANDARD BLOCKS.



DEPT. OF PUBLIC WORKS  
**KITTITAS COUNTY**  
ELLENSBURG, WASHINGTON  
THORP HIGHWAY BRIDGE ET AL.  
APPROACH GUARDRAILS

SCALE: H 1" = 20'  
V

C R P 12-80  
DRAWN BY DLT DATE SEPT 1981 SHEET 9 OF 14  
APPROVED: 4/27/83 DMBE DIRECTOR OF PUBLIC WORKS