

**MAP OF
PERMANENT HIGHWAY NO. 2
KITTTAS COUNTY,
WASHINGTON.**

SCALE: 1 INCH = 200 FEET.

MARCH 4, 1913.

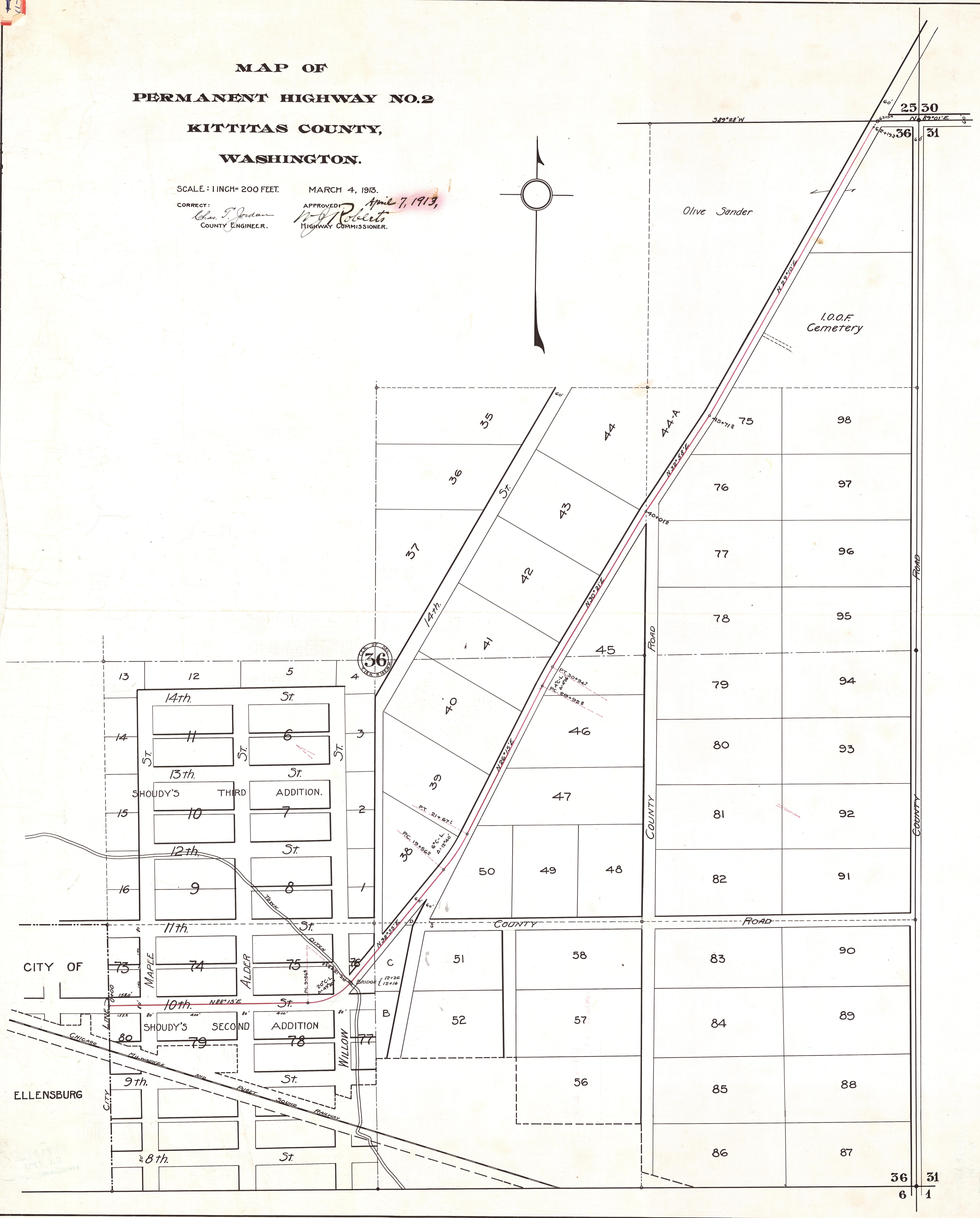
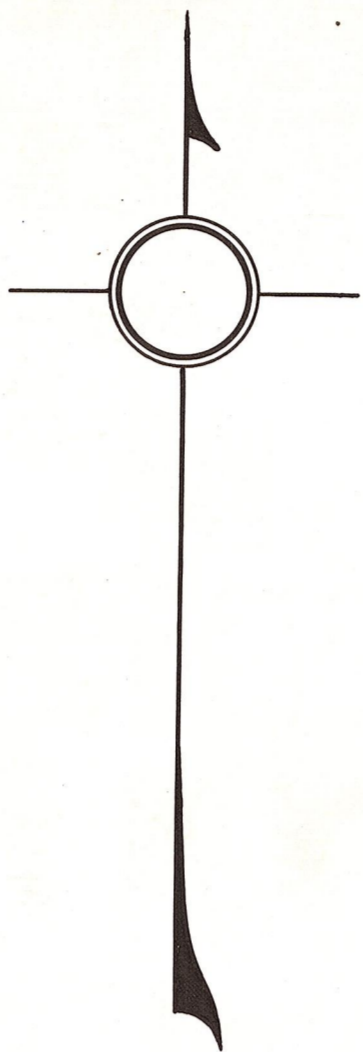
CORRECT:

Chas. T. Jordan
COUNTY ENGINEER.

APPROVED:

W. J. Roberts
HIGHWAY COMMISSIONER.

April 7, 1913



BRICK RD. (CEMETERY RD.) (RADIO RD.)