

T. 17N. R. 20E. W. M.

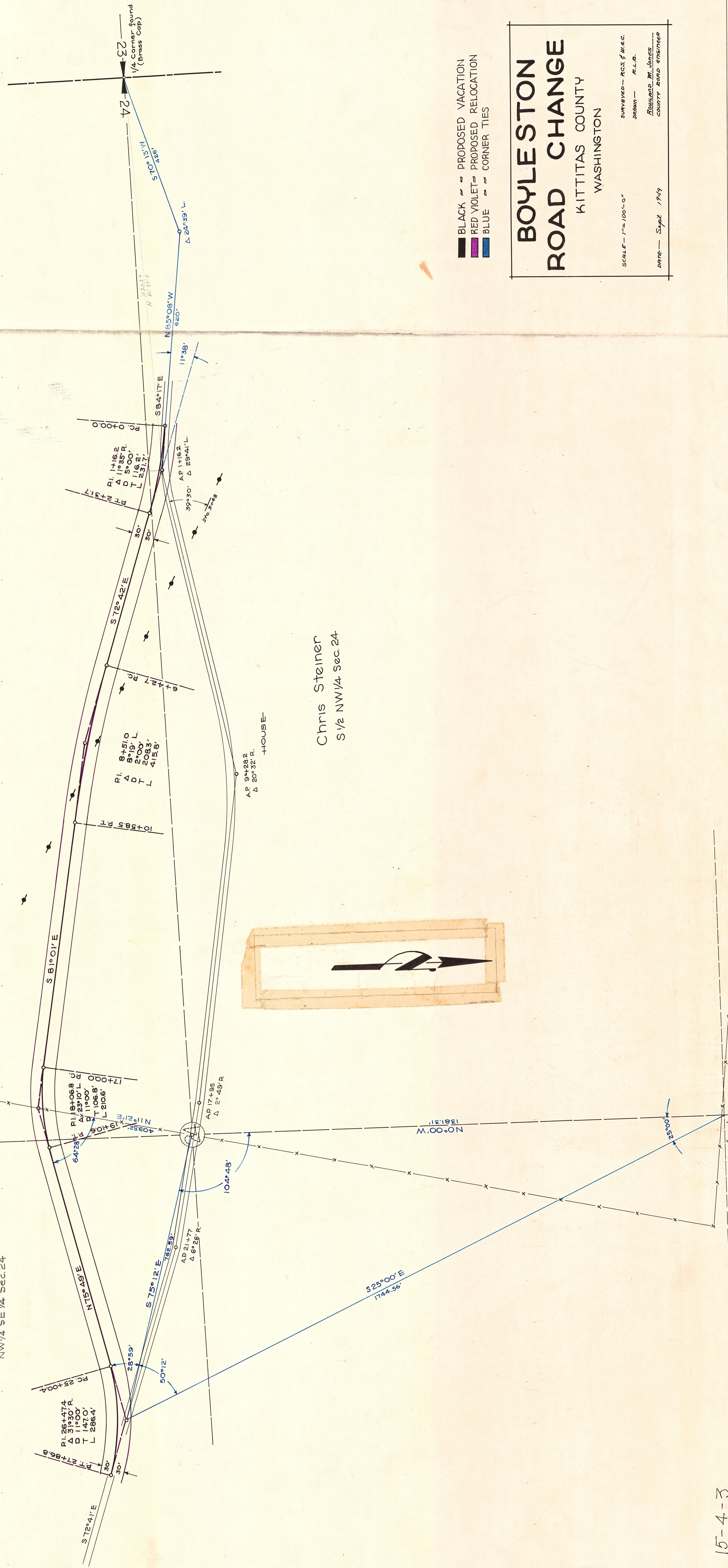
BOYLESTON
ROAD
RD.

Chris Steiner
N 1/2 SW 1/4 Sec. 24

U.S. GOV'T
NW 1/4 SE 1/4 Sec. 24

Chris Steiner
S 1/2 NW 1/4 Sec. 24

HOUSE



BLACK — PROPOSED VACATION
 RED VIOLET — PROPOSED RELOCATION
 BLUE — CORNER TIES

**BOYLESTON
ROAD CHANGE**
 KITTITAS COUNTY
 WASHINGTON

SCALE — 1" = 100'-0"
 SURVEYED — R.C.S. & W.B.C.
 DRAWN — R.L.B.
 DATE — Sept. 1949
 FORWARDED BY — JAMES
 COUNTY ROAD ENGINEER