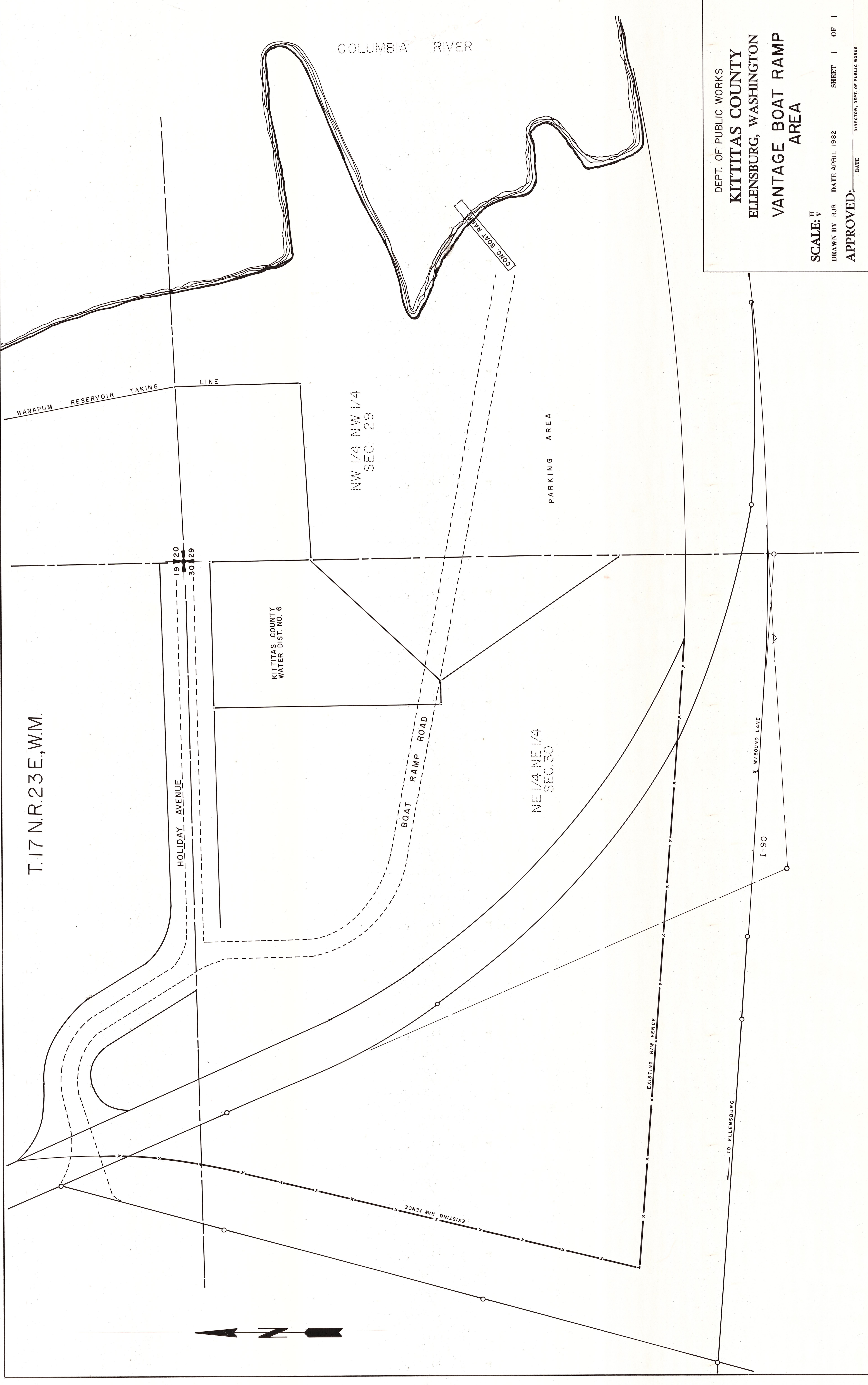


T.17 N.R.23 E., W.M.



DEPT. OF PUBLIC WORKS
KITITIAS COUNTY
 ELLENSBURG, WASHINGTON
VANTAGE BOAT RAMP AREA

SCALE: $\frac{1}{2}$ " = 1'
 DRAWN BY RJR DATE APRIL 1982 SHEET 1 OF 1
 APPROVED: _____ DATE _____
DIRECTOR, DEPT. OF PUBLIC WORKS