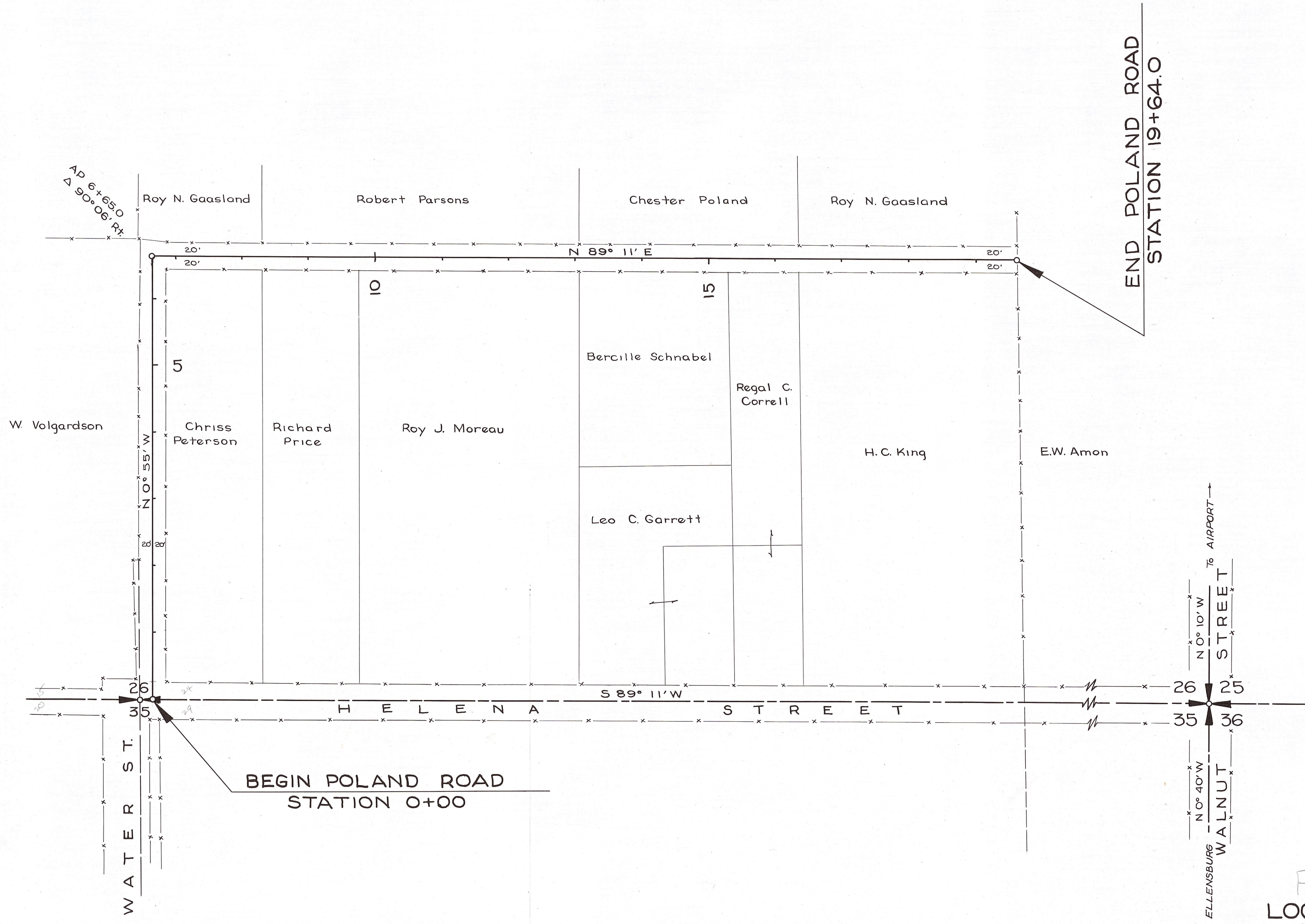


Poland Change
6-9-91

T. 18 N. R. 18 E. W.M.



Poland Road
 LOCATION PLAT OF
 COUNTY ROAD
 SHOWING R/W

KITTITAS COUNTY, WASHINGTON
 SCALE 1"=100' APPROVED DEC. 1948

Rowland M. Jones
 COUNTY ROAD ENGINEER

CHAIRMAN, BOARD OF COUNTY COMM'RS

Poland Road
 No. 179