

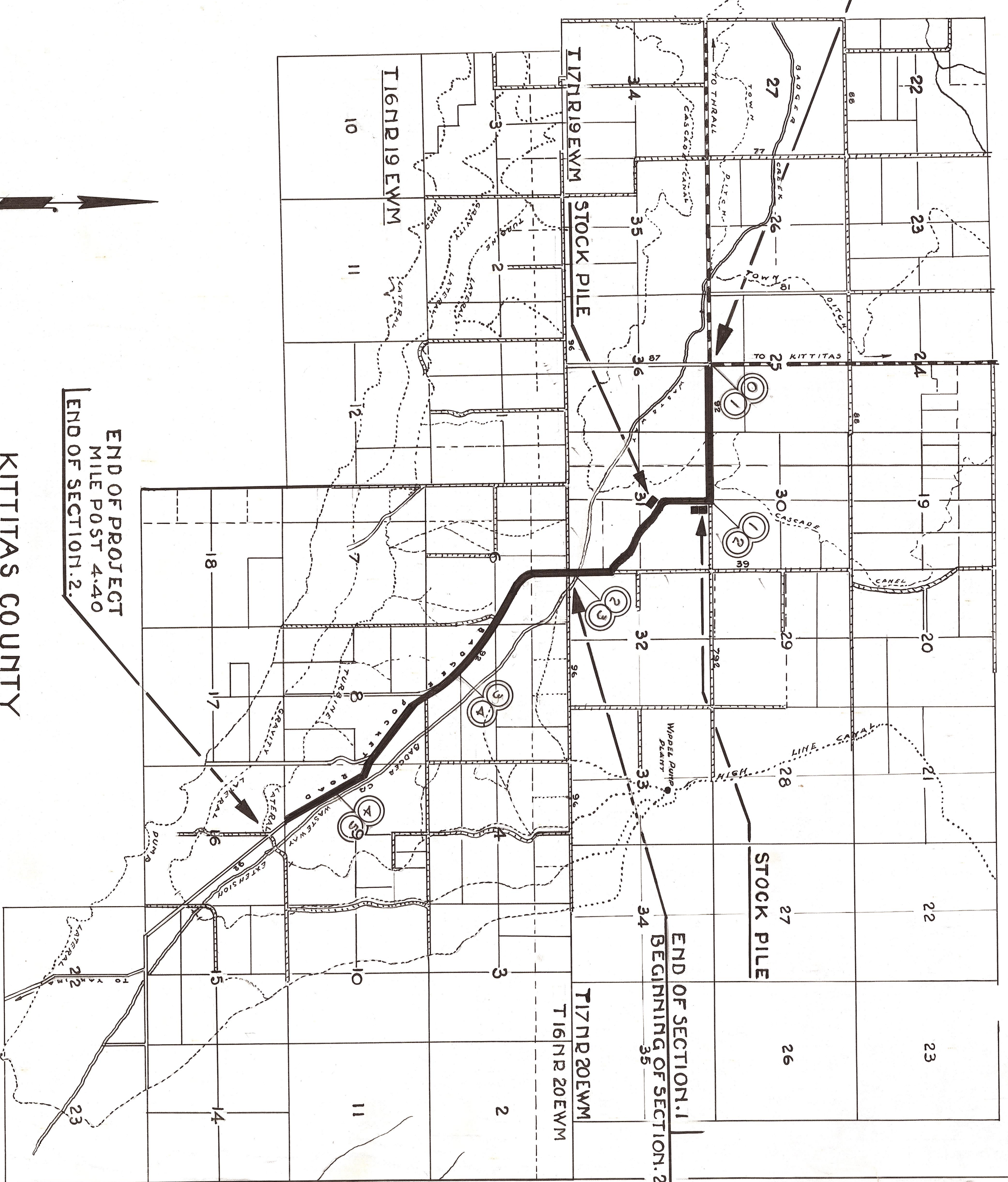
BEGINNING OF PROJECT
MILE POST 0.00
BEGINNING OF SECTION 1

ROAD MIX		SECTION 1		2.00 MILES	
M.P. 0.0 TO M.P. 2.00		ROAD No 92			
MILE	PREPARATION AND FINISHING ROADWAY MILES	MINERAL AGGREGATE IN PLACE FROM STOCK PILE CU. YDS.	M.C.2 ROAD OIL TONS	MIXING AND FINISHING MILES	WATER IN PLACE M. GALS.
1	1.00	800	65.00	1.00	40.00
2	1.00	800	65.00	1.00	40.00
TOTALS	2.00	1600	130.00	2.00	80.00

PENETRATION		SECTION 2		2.40 MILES	
M.P. 2.00 TO M.P. 4.40		ROAD No 92			
MILE	PREPARATION AND FINISHING ROADWAY MILES	MINERAL AGGREGATE IN PLACE FROM STOCK PILE CU. YDS.	M.C.2 ROAD OIL TONS	WATER IN PLACE M. GAL.	
3	1.00	600	35.00	40.00	
4	1.00	600	35.00	40.00	
5 PART	.40	240	14.00	16.00	
TOTALS	2.40	1440	84.00	96.00	

SECTION 1 AND 2		4.40 MILES			
M.P. 0.0 TO M.P. 4.40					
SECTIONS	PREPARATION AND FINISHING ROADWAY MILES	MINERAL AGGREGATE IN PLACE FROM STOCK PILE CU. YDS.	M.C.2 ROAD OIL TONS	MIXING AND FINISHING MILES	WATER IN PLACE M. GALS.
1	2.00	1600	130.00	2.00	80.00
2	2.40	1440	84.00	2.00	96.00
TOTALS	4.40	3040	214.00	2.00	176.00

SUMMARY OF QUANTITIES



KITITAS COUNTY
STATE OF WASHINGTON
COUNTY ROAD PROJECT No. 27

SCALE TWO INCHES = 1 MILE

APPROVED [Signature] COUNTY ROAD ENGR

COUNTY COMMISSIONERS [Signatures]