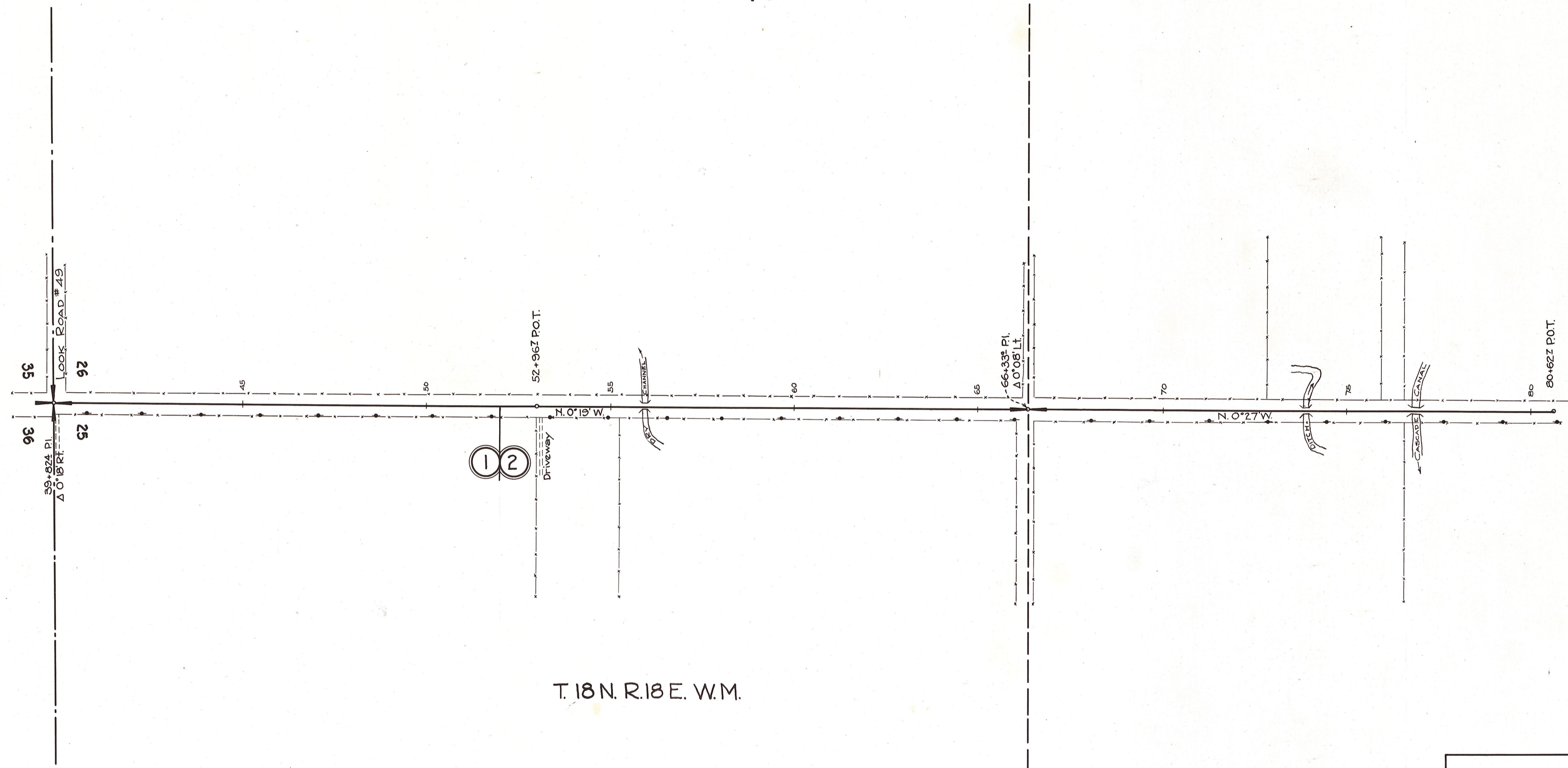


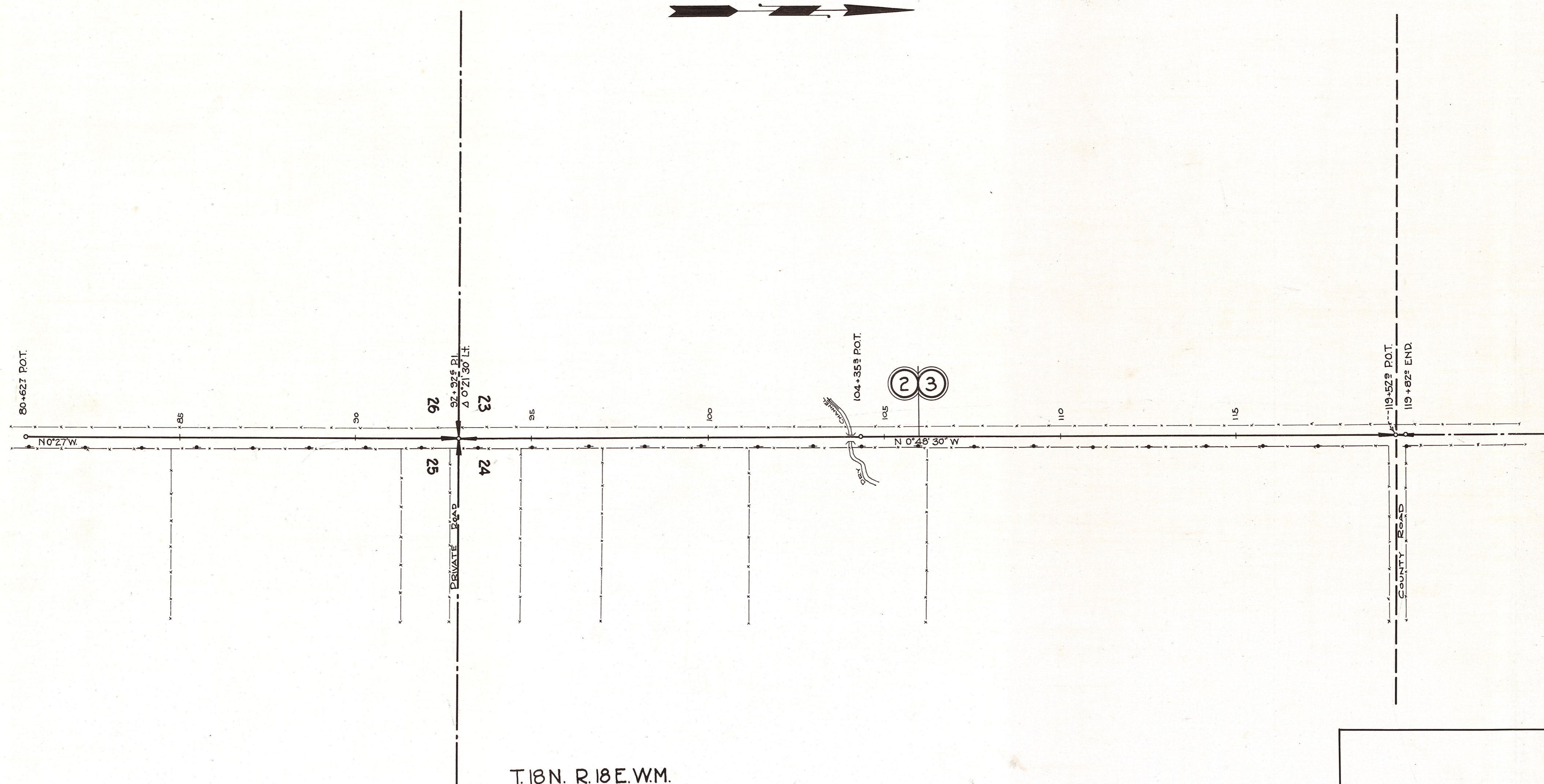
T. 18 N. R. 18 E. W.M.

MAP OF  
 PERMANENT HIGHWAY NO. 10  
 KITTITAS COUNTY  
 SCALE 1" = 200' August 1921  
 APPROVED:  
 HIGHWAY COMMISSIONER  
 SHEET 1 OF 3 SHEETS



T. 18 N. R. 18 E. W.M.

MAP OF  
 PERMANENT HIGHWAY NO. 10  
 KITTITAS COUNTY  
 SCALE 1" = 200' AUGUST 1921  
 APPROVED:  
 HIGHWAY COMMISSIONER  
 SHEET 2 OF 3 SHEETS



T. 18 N. R. 18 E. W.M.

MAP OF  
PERMANENT HIGHWAY NO. 10  
KITITAS COUNTY

SCALE 1" = 200'      AUGUST 1921

APPROVED:

HIGHWAY COMMISSIONER

SHEET 3 OF 3 SHEETS