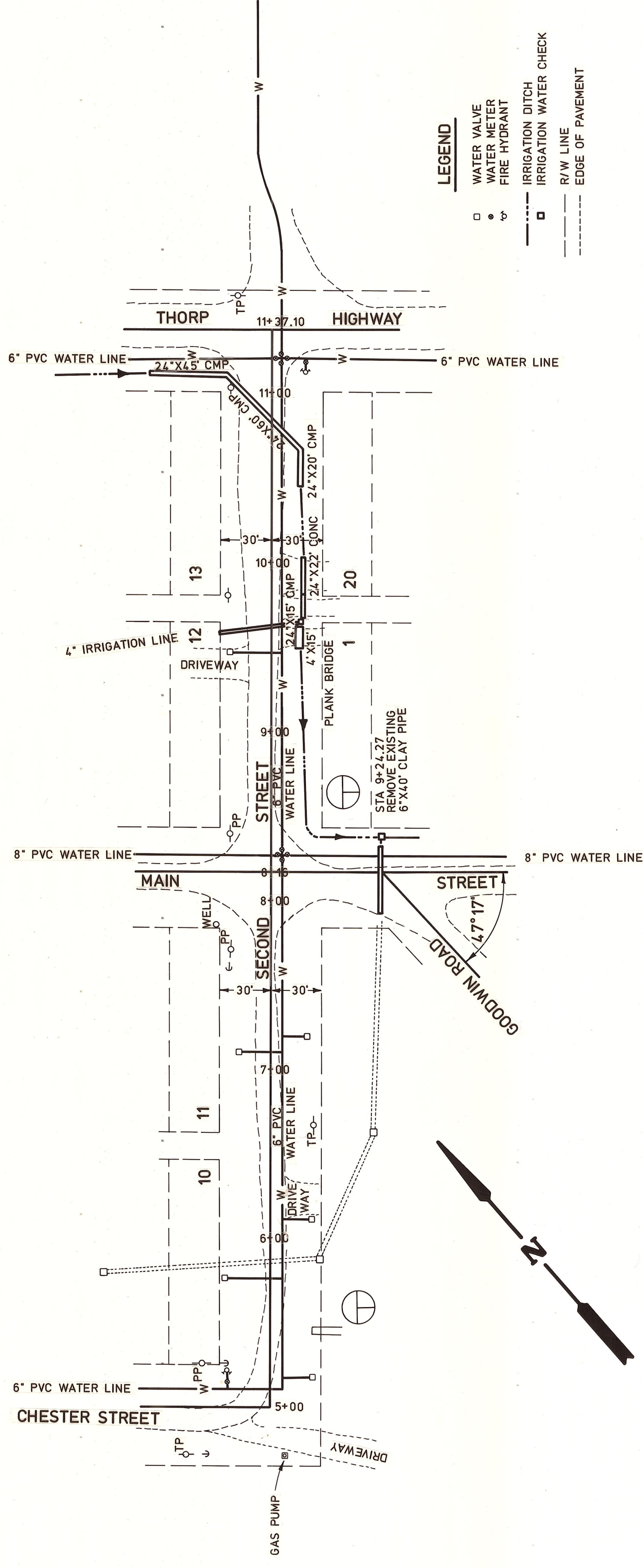


Sec. 11 T.18N., R.17E., W.M.



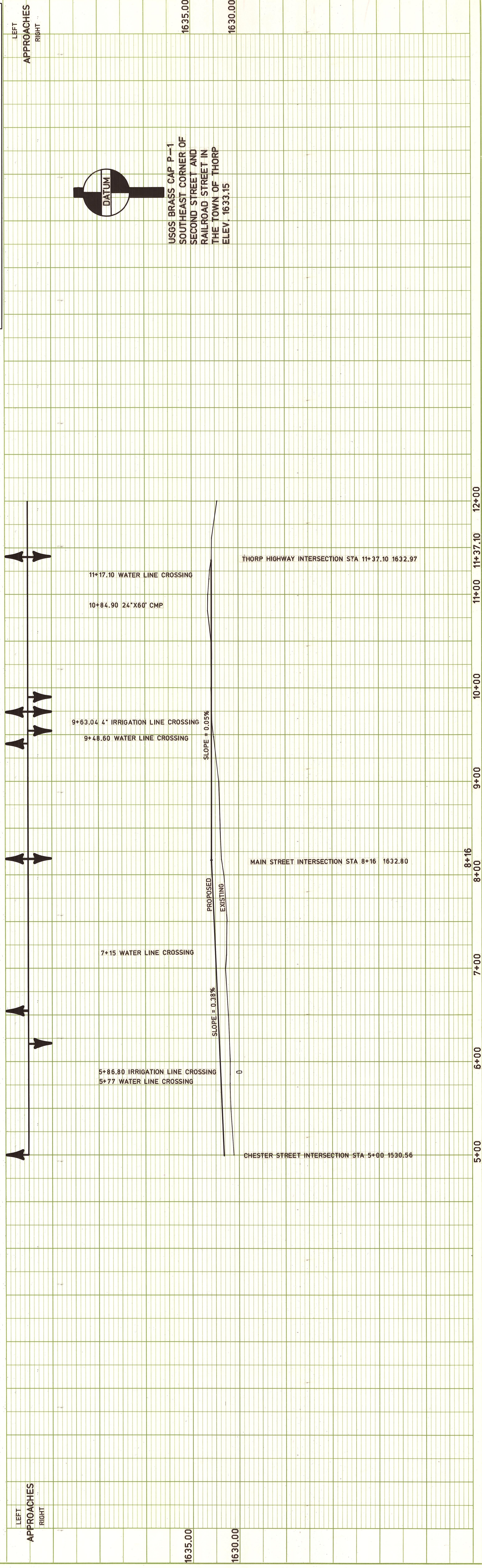
- LEGEND**
- WATER VALVE
  - WATER METER
  - FIRE HYDRANT
  - IRRIGATION DITCH
  - IRRIGATION WATER CHECK
  - R/W LINE
  - EDGE OF PAVEMENT

DEPARTMENT OF PUBLIC WORKS  
**KITTITAS COUNTY**  
**ELENSBURG, WASHINGTON**  
**SECOND STREET NO. 54330**  
**THORP TOWNSITE**

SCALE: H 1"=50'  
 V 1"=5'

DRAWN BY J.N. DATE OCT. 1987 SHEET OF

APPROVED: \_\_\_\_\_ DATE \_\_\_\_\_ PUBLIC WORKS DIRECTOR



USGS BRASS CAP P-1  
 SOUTHEAST CORNER OF  
 SECOND STREET AND  
 RAILROAD STREET IN  
 THE TOWN OF THORP  
 ELEV. 1633.15

PLAN	
DATE	BY
REVISIONS	
NO.	DESCRIPTION
1	AS SHOWN

PROFILE	
DATE	BY
REVISIONS	
NO.	DESCRIPTION
1	AS SHOWN