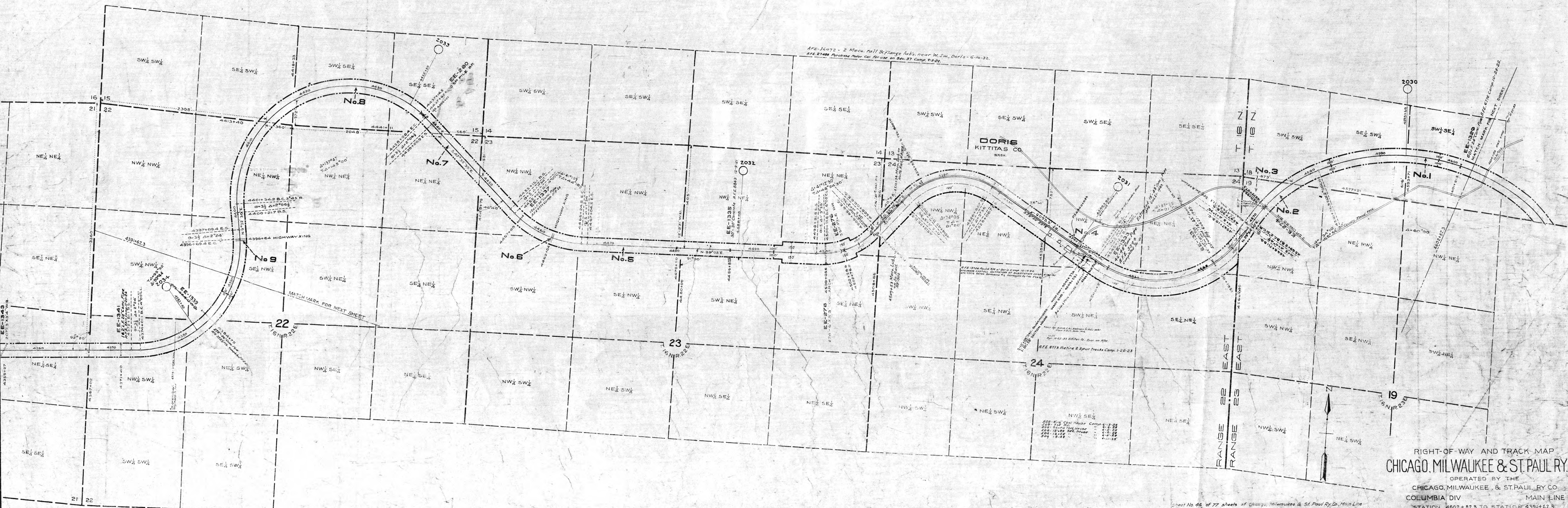


APC 35584 - Jumbo Grounding Switch at Sub. Sta. 11-10-31
" 35585 - Jumbo Grounding Switch at Sub. Sta. 11-10-31
" 35586 - Jumbo Grounding Switch at Sub. Sta. 11-10-31
" 35587 - Jumbo Grounding Switch at Sub. Sta. 11-10-31
" 35588 - Jumbo Grounding Switch at Sub. Sta. 11-10-31
" 35589 - Jumbo Grounding Switch at Sub. Sta. 11-10-31
" 35590 - Jumbo Grounding Switch at Sub. Sta. 11-10-31
" 35591 - Jumbo Grounding Switch at Sub. Sta. 11-10-31
" 35592 - Jumbo Grounding Switch at Sub. Sta. 11-10-31
" 35593 - Jumbo Grounding Switch at Sub. Sta. 11-10-31
" 35594 - Jumbo Grounding Switch at Sub. Sta. 11-10-31
" 35595 - Jumbo Grounding Switch at Sub. Sta. 11-10-31
" 35596 - Jumbo Grounding Switch at Sub. Sta. 11-10-31
" 35597 - Jumbo Grounding Switch at Sub. Sta. 11-10-31
" 35598 - Jumbo Grounding Switch at Sub. Sta. 11-10-31
" 35599 - Jumbo Grounding Switch at Sub. Sta. 11-10-31
" 35600 - Jumbo Grounding Switch at Sub. Sta. 11-10-31

NO.	GRANTOR	GRANTEE	INSTRUMENT	DATE	RECORDED	NUMBER	REMARKS
1	United States	C.M. & St. P. Ry. of Wash.	Grant	Dec 7-06	Secy's Office	5164	
2	U. P. Ry. Co.	"	War. D.	Dec 8-06	14 586	51107	
3	U. P. Ry. Co.	"	War. D.	July 11-07	19 235	101107	
4	United States	"	Grant	Dec 7-06	Secy's Office	5164	
5	U. P. Ry. Co.	"	War. D.	Dec 8-06	14 586	51107	
6	Board of Co. Commrs.	"	Agreement	May 29-07	Secy's Office	5164	
7	United States	"	Grant	Dec 7-06	"	5001	
8	U. P. Ry. Co.	"	War. D.	Dec 8-06	14 586	51107	
9	Board of Co. Commrs.	"	Agreement	May 29-07	Secy's Office	5164	Highway Crossing.



RIGHT-OF-WAY AND TRACK MAP
CHICAGO, MILWAUKEE & ST. PAUL RY. CO.
OPERATED BY THE
CHICAGO, MILWAUKEE & ST. PAUL RY. CO.
COLUMBIA DIV MAIN LINE
STATION 4602+82.3 TO STATION 4391+62.3
SCALE 1-IN=400 FT. JUNE 30, 1915
OFFICE OF CHIEF ENGINEER
CHICAGO, ILLINOIS