

**APPENDIX E**  
**PROPOSED AIRPORT INSTRUMENT**  
**APPROACH PROCEDURES-**  
**TO BE PUBLISHED**

ELLENSBURG, WASHINGTON

AL-1

# RNAV (GPS) RWY 25, ORIG

APP CRS 262°  
 Rwy Idg 5590  
 TDZE 1751  
 Apt Elev 1760

ELLENSBURG/BOWERS FIELD (ELN)

▼ Straight-in minimums not authorized at night. Procedure not authorized when R-6714A, G, H are in operation.

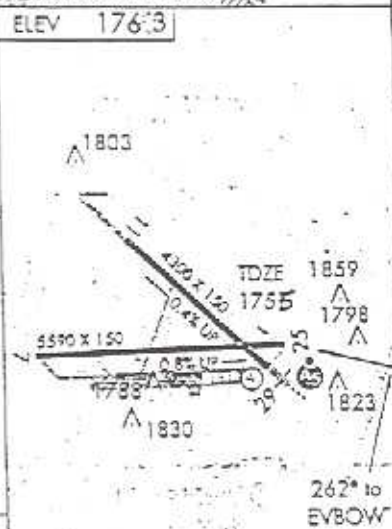
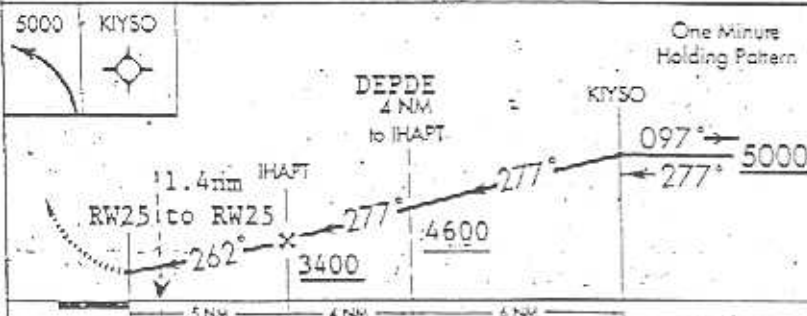
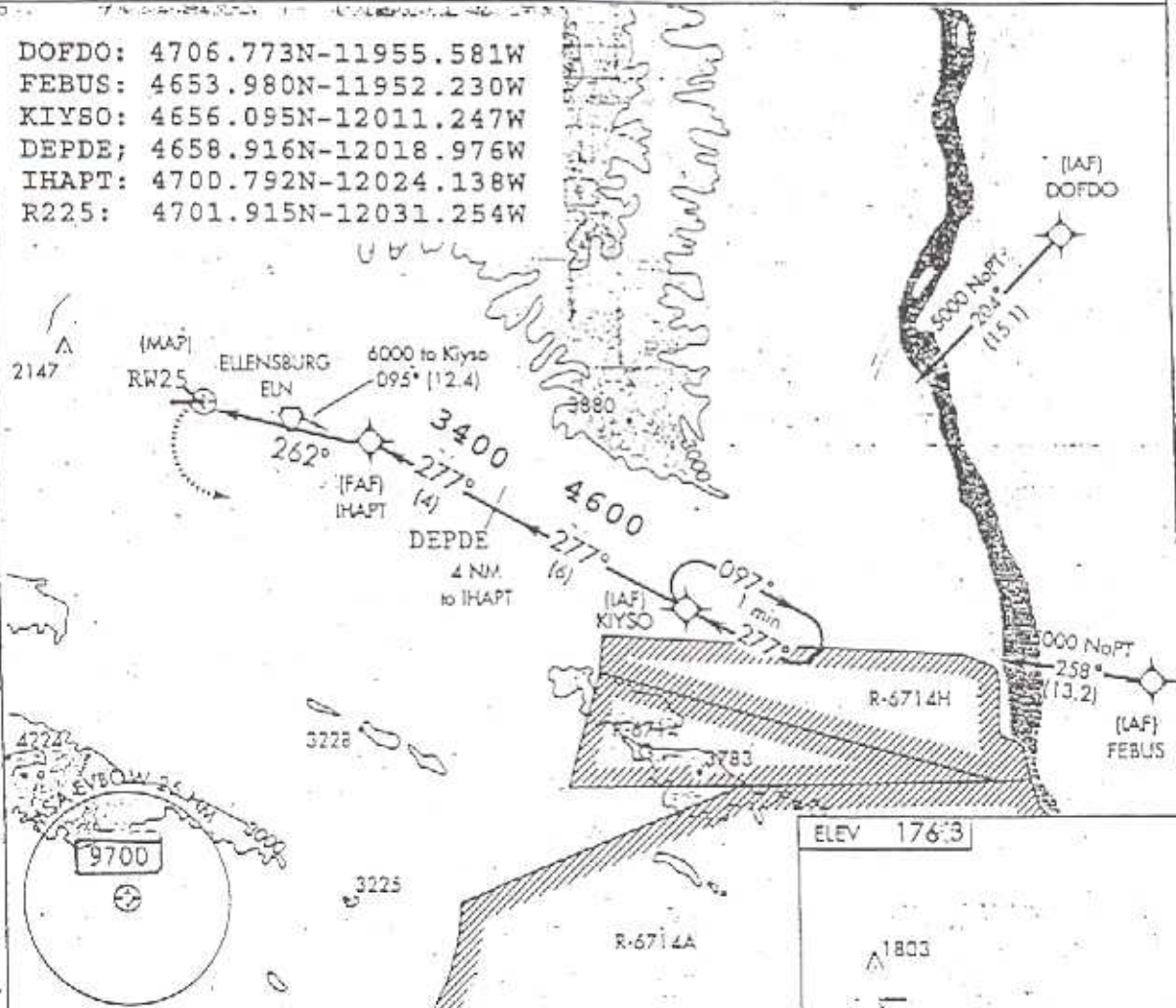
MISSED APPROACH: Climbing left turn to 5000 direct to KIYSO WP and hold.

ASOS  
118.375

SEATTLE CENTER  
132.6 269.35

UNICOM  
123.0 (CTAF) 0

DOFDO: 4706.773N-11955.581W  
 FEBUS: 4653.980N-11952.230W  
 KIYSO: 4656.095N-12011.247W  
 DEPDE: 4658.916N-12018.976W  
 IHAPT: 4700.792N-12024.138W  
 R225: 4701.915N-12031.254W



CATEGORY	A	B	C	D
S-25	2240 - 1	485	2240 - 1 1/2	485
CIRCLING	2240 - 1 1/2	577	2560 - 1 1/2	2500 - 2 1/4

REIL Rwy 29  
 MRL Rwy 11-290

ELLENSBURG, WASHINGTON

ELLENSBURG/BOWERS FIELD (ELN)

AMDI 1

47°02'N-120°37'W

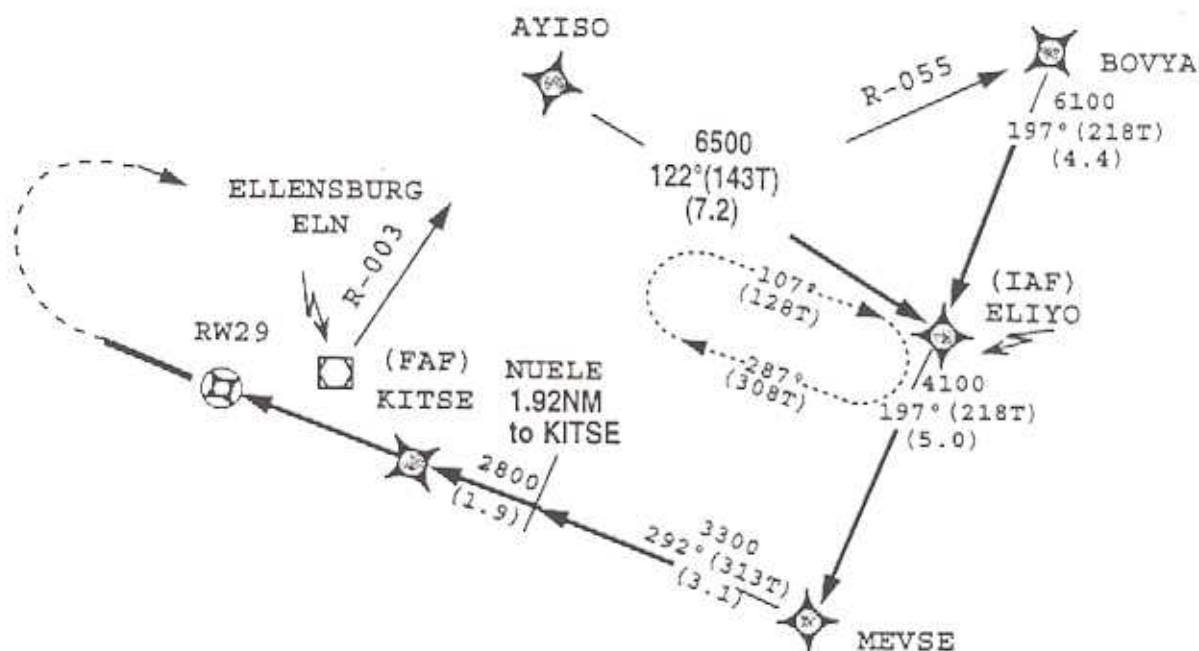
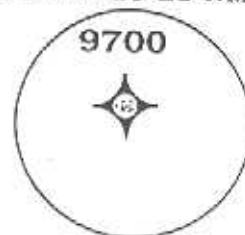
# RNAV (GPS) RWY 25, ORIG

**ORIGINAL  
NAV (GPS) RWY 29**

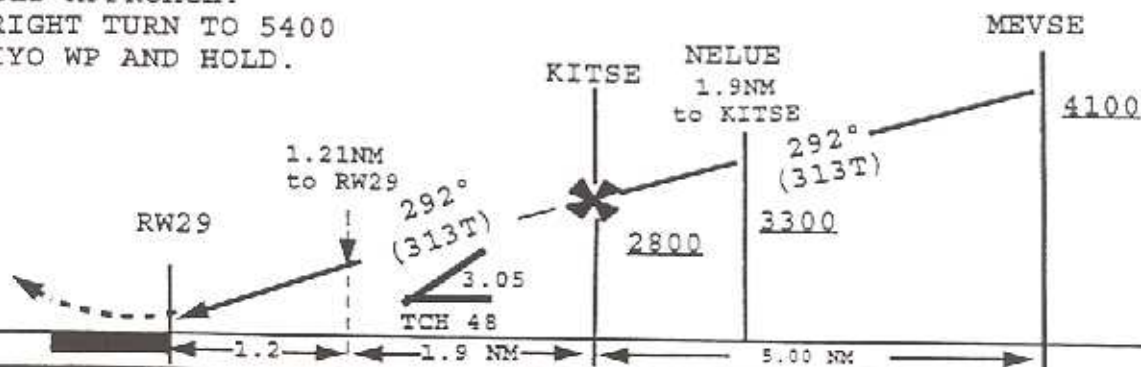
**BOWERS FIELD  
ELLENSBURG, WA**

**PROTOTYPE: NOT FOR NAVIGATION.**

MSA RW29 25 NM



**MISSED APPROACH:  
IMBINING RIGHT TURN TO 5400  
RECT ELIYO WP AND HOLD.**



CATEGORY	A		B		C		D	
NAV MDA	2180-1	421	2180-1	421	NA		NA	
IRCLING	2280-1	517	2340-1	577	NA		NA	

GPS OR RNP-0.3 REQUIRED. DME/DME RNP-0.3 NA.

**IF LOCAL ALTIMETER NOT RECEIVED, USE WENATCHEE  
ALTIMETER SETTING AND INCREASE ALL MDAs 140 FT.**

- AYISO: 4706.024/12024.516
- BOVYA: 4703.689/12014.249
- ELIYO: 4700.255/12018.199
- MEVSE: 4656.323/12022.707
- NELUE: 4658.426/12025.991
- KITSE: 4659.736/12028.041
- RW29 : 4701.850/12031.353

ELLENSBURG, WASHINGTON

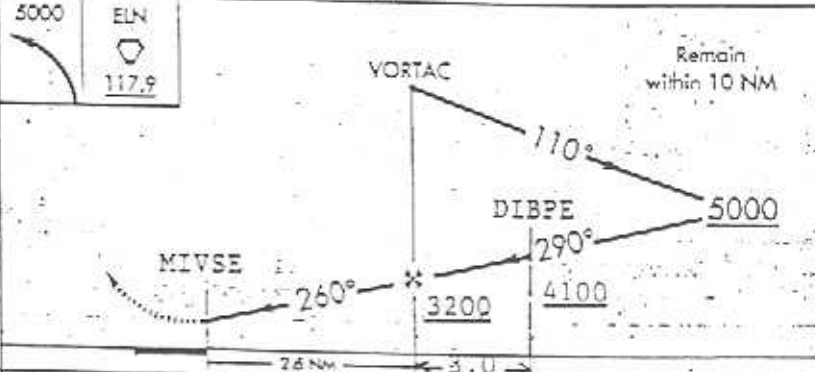
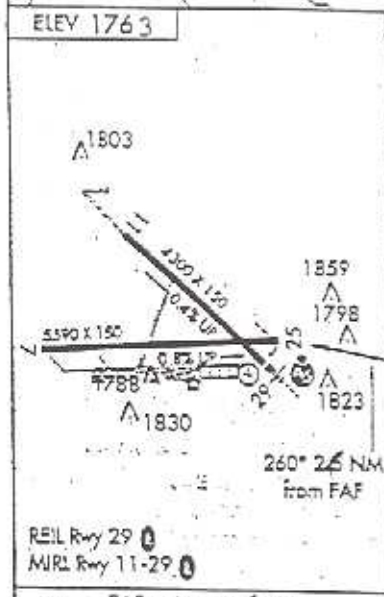
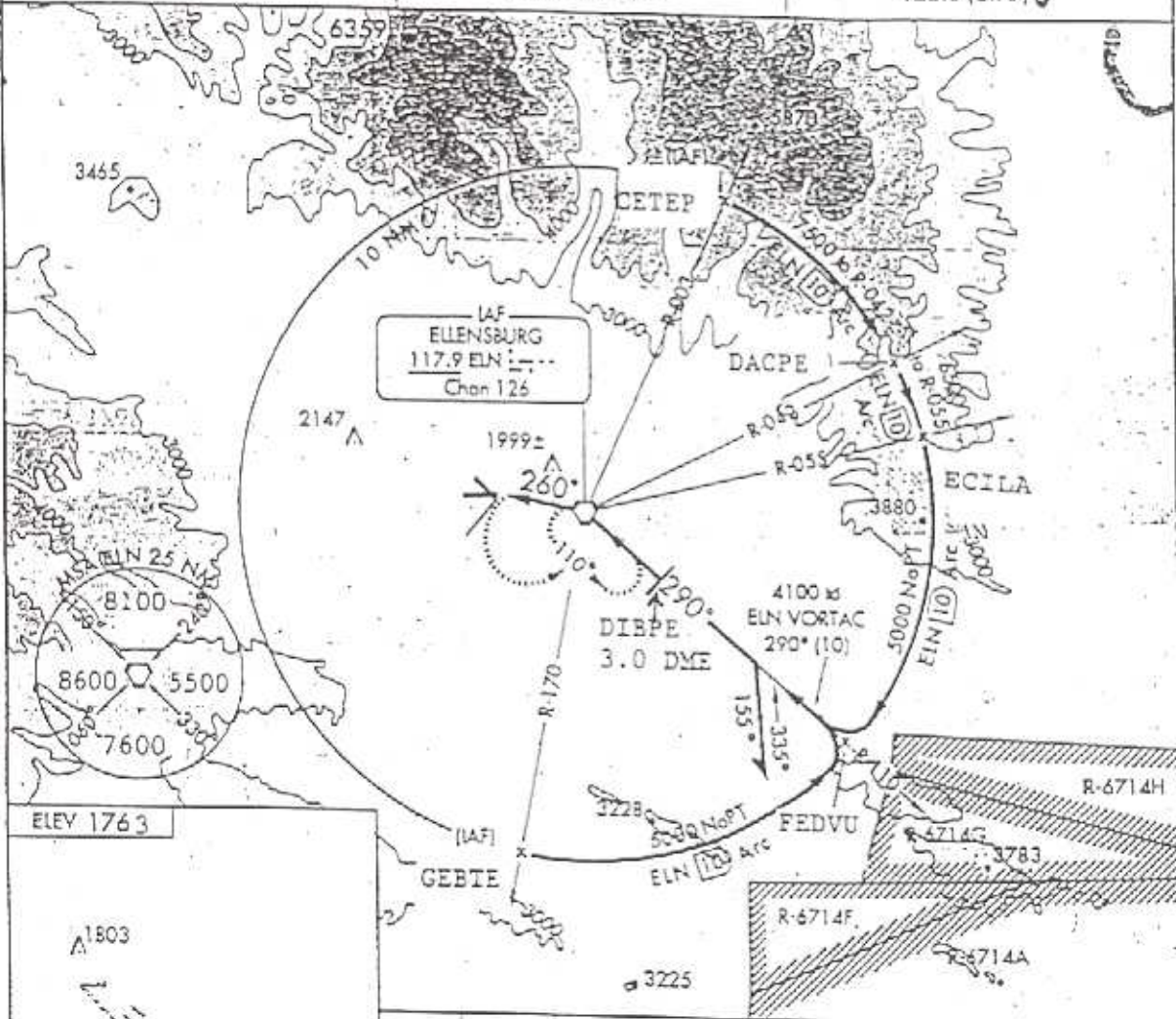
AL-130 (FAA)

VORTAC ELN	APP CRS	Rwy Idg	N/A
117.9	260°	TDZE	N/A
Chan 126		Apt Elev	1760

VOR/DME-A  
ELLENSBURG/BOWERS FIELD (ELN)

Procedure not authorized when R-6714A, R-6714F, R-6714G, R-6714H in operation.  
MISSED APPROACH: Climbing left turn to 5000 direct to ELN VORTAC and hold.

ASOS 118.375	SEATTLE CENTER 132.6 269.35	UNICOM 123.0 (CTAF)
-----------------	--------------------------------	------------------------



FAF to MAP 2.6 NM	CATEGORY	A	B	C	D
Knots: 60 90 120 150 180	CIRCLING	2280 517	2340 577		NA

ELLENSBURG, WASHINGTON Amdt 13  
47°02'N-120°32'W  
ELLENSBURG/BOWERS FIELD (ELN)  
VOR/DME-A  
135

ELLENSBURG, WASHINGTON

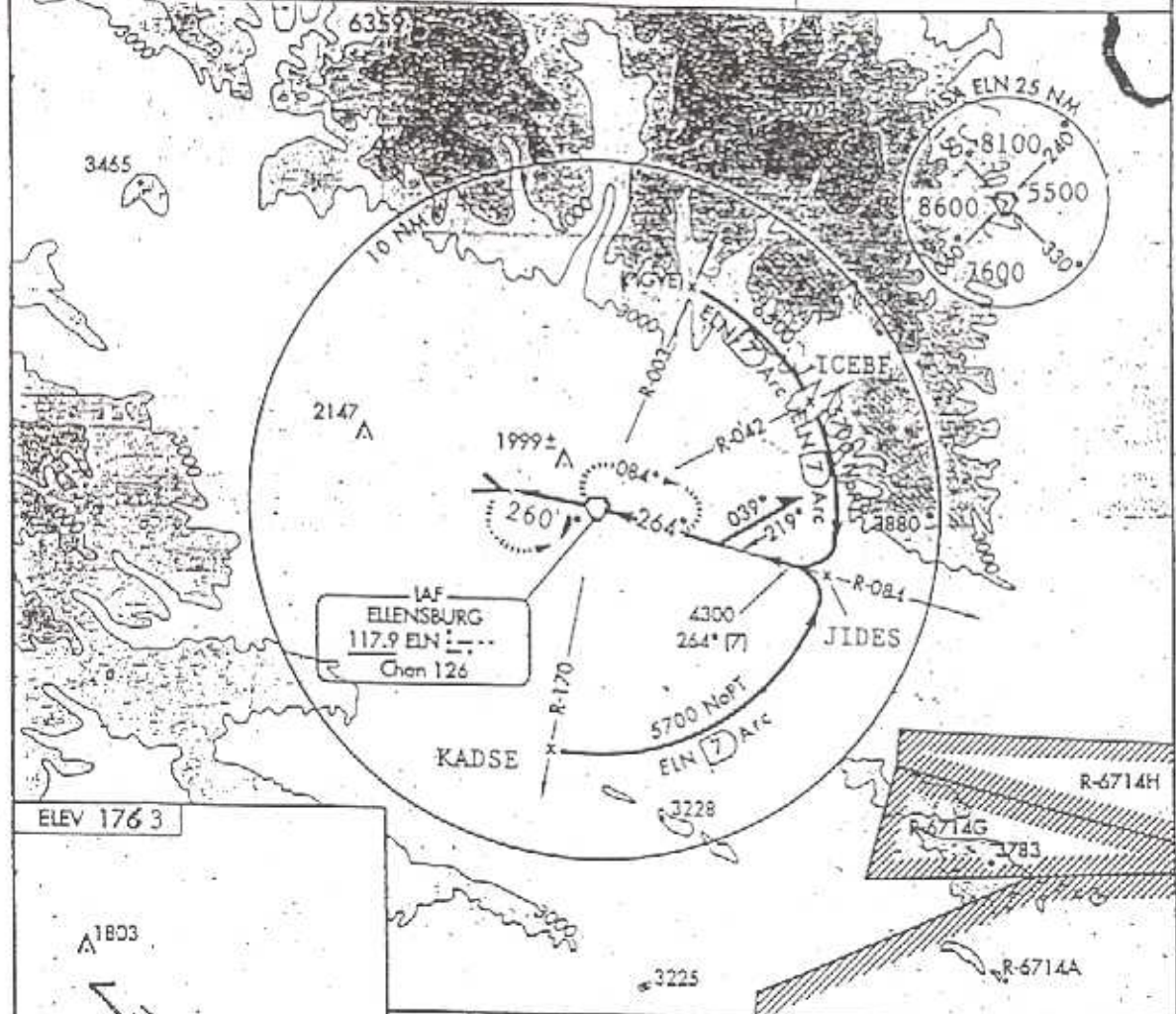
136  
AL-130 (FAA)

VORTAC ELN <b>117.9</b> Chan 126	APP CRS <b>260°</b>	Rwy Idg TDZE Apt Elev 1760	N/A N/A 1760
--	------------------------	-------------------------------------	--------------------

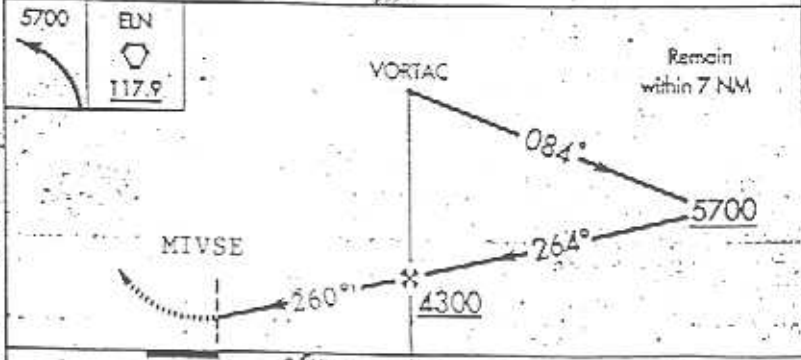
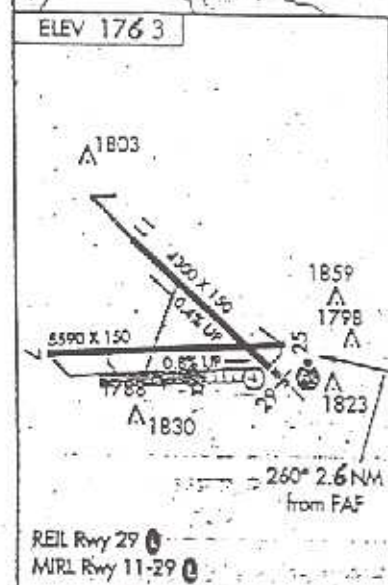
**VOR - B**  
ELLENSBURG/BOWERS FIELD (ELN)

▽  
△ NA  
MISSED APPROACH: Climbing left turn to 5700 direct to ELN VORTAC and hold.

ASOS 118.375	SEATTLE CENTER 132.6 269.35	UNICOM 123.0 (CTAF) 8
-----------------	--------------------------------	--------------------------



VOR-B



FAF to MAP 2.5 NM	CATEGORY	A	B	C	D
Knots 60   90   120   150   180	CIRCLING	3260-1 1/4	1497	NA	NA
Min:Sec 2:30   1:40   1:15   1:00   0:50					

ELLENSBURG, WASHINGTON  
Amtd 2

47°02'N-120°32'W

ELLENSBURG/BOWERS FIELD (ELN)  
**VOR - B**