

KITTITAS COUNTY DEPARTMENT OF PUBLIC WORKS

Kirk Holmes, Director

TO: Neil Caulkins, DPA
FROM: Douglas D'Hondt, County Engineer, Public Works
DATE: February 17, 2011
SUBJECT: Maggs Flood Claim

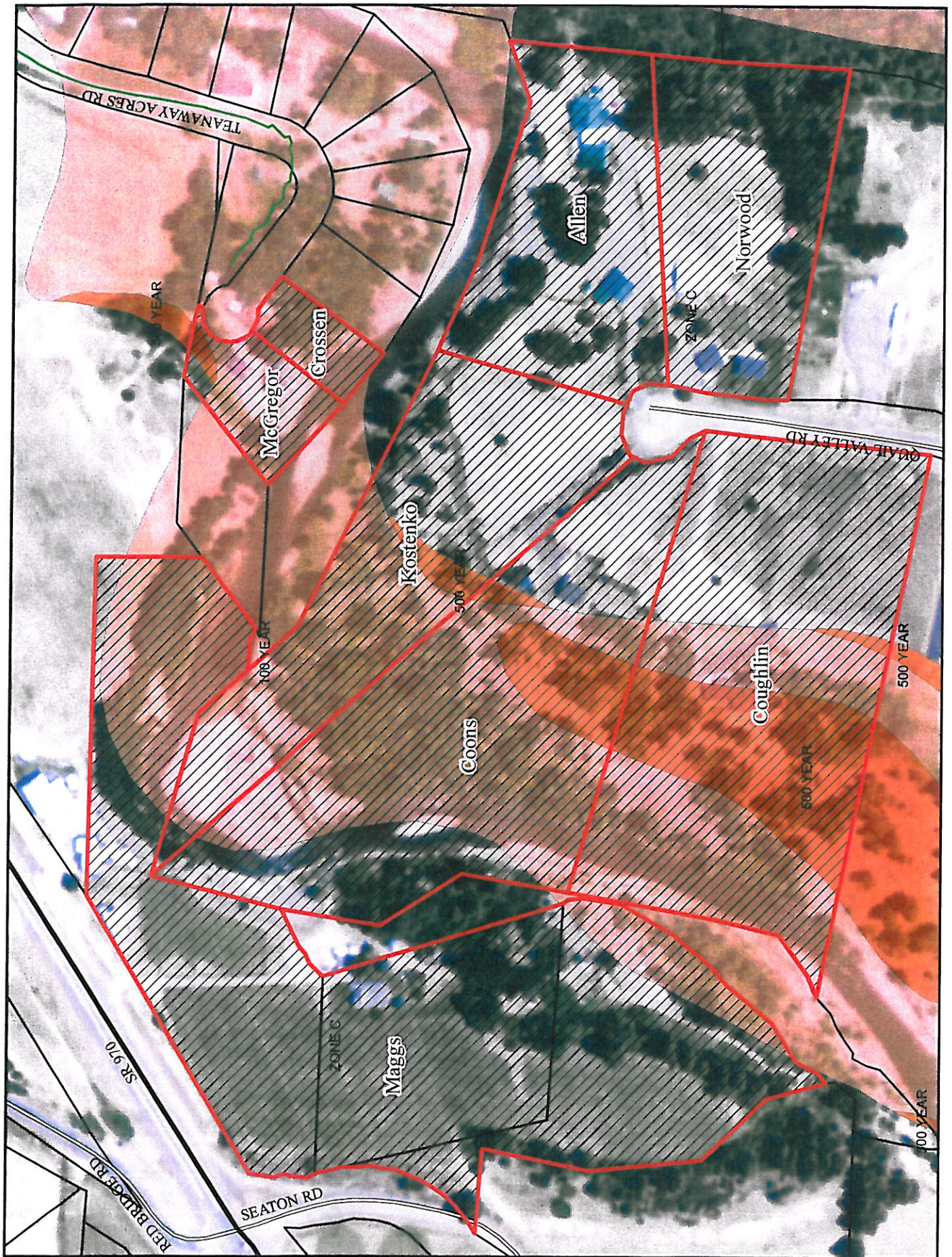
A portion of the site is considered part of the FEMA designated 100-year floodplain. We have no evidence of the levee breach upstream of the site flooded the property. It appears the river over-topped the banks during the flood. Aerial photography from January 2009 near the site indicates the stream flow remained within the designated 100-year floodplain of the property. No levee is located on the site. Some erosion may have occurred at the shoreline.

A newspaper article from November 26, 1959 reprinted in the North Kittitas County Tribune after the January 2011 flooding event indicated the family residence on the property flooded. The residents (Benetto family) reportedly moved in with another family. The property suffered bank erosion where the river bends during a December 1980 flood event. A barn was severely undermined as evidenced by an attached aerial photograph. The location of the barn is vulnerable to erosion because the river bend at this location is severe. Stream velocity increases at the outside portion of a bend. As velocity increases, so does erosion. The aforementioned barn no longer exists. The property is flooded and eroded during each significant event.

No record of a Kittitas County flood management system on the Teanaway River was found. The only known levees are found immediately upstream of SR 970 on the right bank, in the curve of the left bank at the Benetto property, and at the left bank located near the end of Quail Valley Road. It is unclear of who constructed these levees. The levee on the Benetto property was referenced only once on a Corps of Engineers map circa 1951. The document was not referenced at any other time.

Kittitas County does not retain ownership of the levees and never have. Kittitas County worked with the US Army Corps of Engineers after the January 2009 flood event to reconstruct the one levee for protection of Quail Valley and Lambert Roads.

USACE planned to finish the levee reconstruction summer 2011. KCPW will not complete the construction until this claim is resolved.





December 1980
Mass Property

December 1980

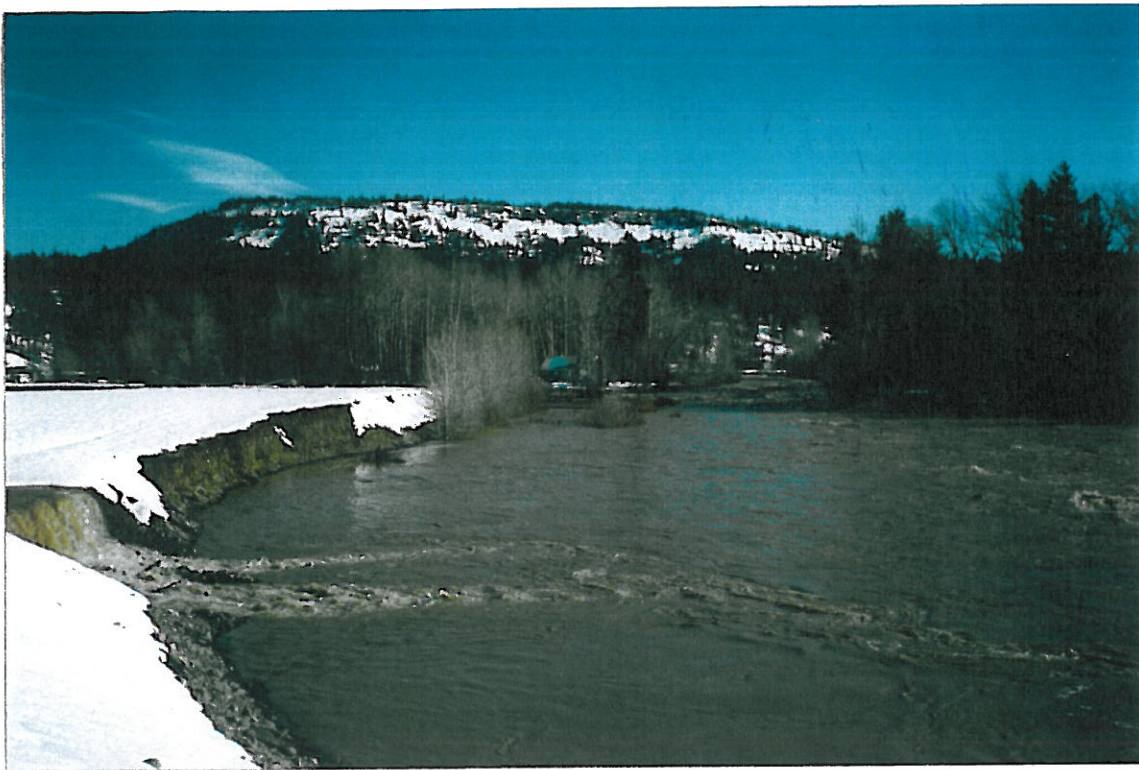


Moss's
Property →



Side of
Quail Valley Road →

Teamway Area



May 95 February 1996

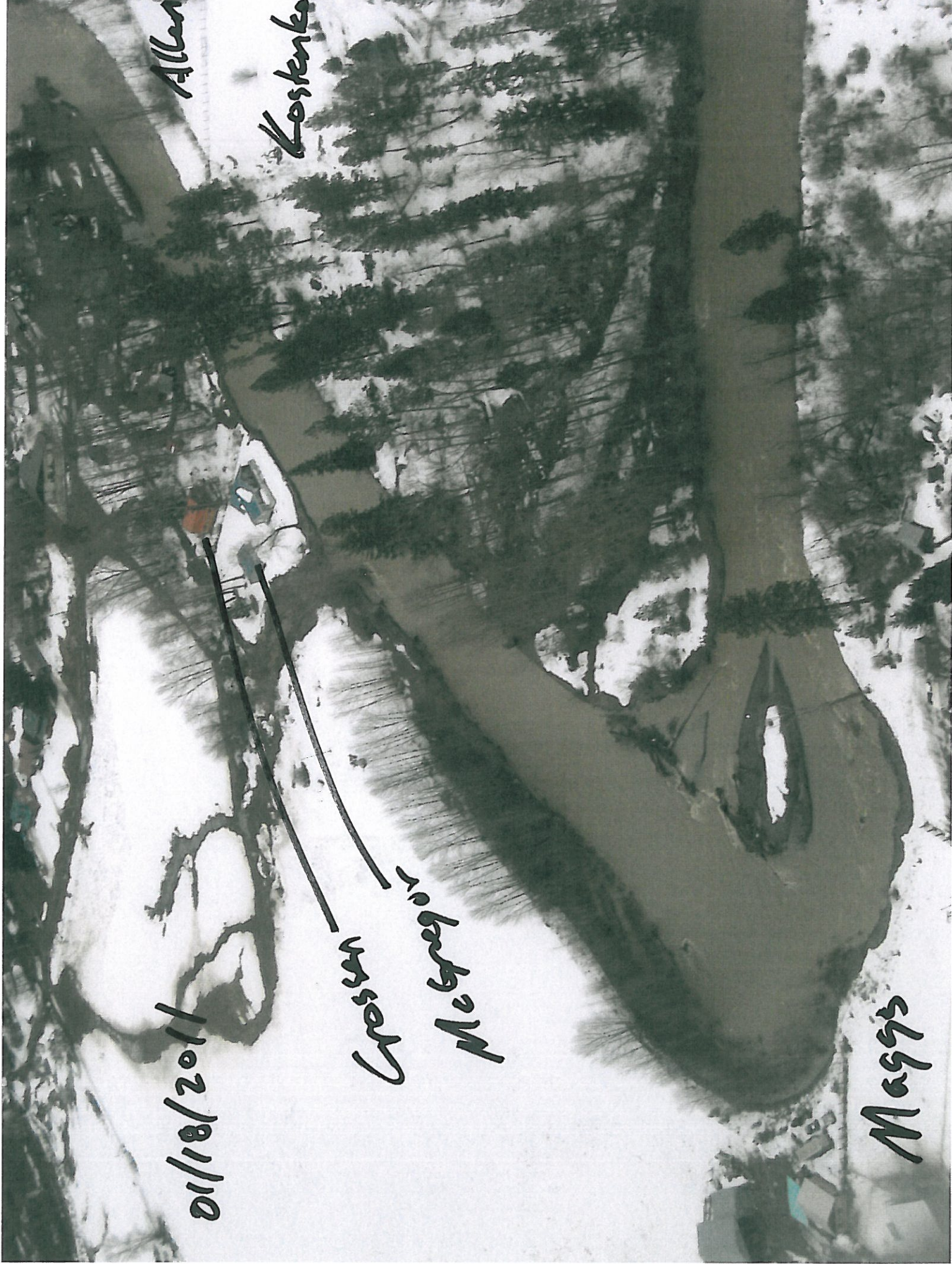
01/18/2011

Allen

Kostenko

Crosby
McGregor

Maggis





Kittitas County ROOTS

"Tapping Into Over 100 Years
of Hometown News Heritage"

NKC TRIBUNE • MINER-ECHO

Compiled by Bonnie Montgomery
bonnie@nkctribune.com

N.K.C. Tribune - Nov. 26 1959

Cle Elum isolated as flood waters wash out highways and bridges, no trains for a week

Cle Elum was all but isolated from the rest of the state Monday when the flood waters closed all mountain passes and threatened to cut off the highway to Ellensburg. A treacherous combination of rain, wind and unseasonal warmth was blamed for the flooding. Rain fell for a week, climaxed by a 6.71 downpour in 24 hours at the mountain weather station of Stampede Pass. Then the mercury shot up, reaching 45-50 at mountain stations where temperatures normally are around freezing. Sunday a strong, warm shifting wind - a Chinook - hit the state. Water from quick melted snow poured from the Cascade in torrents.

The Snoqualmie Pass highway was closed Sunday evening when the rampaging south fork of the Snoqualmie River spilled from its channel and slashed a new bed which washed out all four lanes of the highway 12 miles east of North Bend. Workmen and equipment moved onto the Pass Monday to replace the 300 feet of highway washed out by the crashing flood.

Complete survey of the damage had not been made at press time yesterday but it was reported that the road might be open to two lane traffic at the wash out this week-end, possibly by Thanksgiving.

Blewett Pass was closed for a short time Monday because of slides but has been reopened to traffic.

Water two feet deep crossed the Ellens-

burg highway at the Teanaway bridge, which threatened to go out Monday. Receding water, however, kept the road open.

In the Upper County, County Commissioner Shaffer Heathcock reported the Big Creek Bridge at Nelson Siding and the Cabin Creek bridge were destroyed and the Steel Bridge on the North Fork of the Teanaway has one tier out and has dropped two or three feet.

The Big Creek bridge will be closed until spring. Nelson Siding residents on either side of the bridge have other ways out.

Damage to the bridge on the North Fork of the Teanaway has isolated the Marion Bussoli, Ernest Guistetti, Andy Chicklinski and Jim Sandretto families. The bridge is safe only for foot traffic. Temporary repairs will be made until spring when a new bridge will be built.

Frank Schobers, around Red Bridge is under water. All of the Roy Thomas fields next to the river are under water. Water covered the highway in front of the Bruno Bonetto farm. The basement of the Bussoli home was filled with water and the family moved in with the Guistettis.

Heathcock reported that the big culvert at Dry Creek on the Salmon la Sac road was washed out in one place and the road closed in front of the Robert Wadsworth home.

There will probably be no N.P. trains to Cle Elum for a week or two. The Cabin Creek bridge was weakened by water washing out on both sides for 80-100 feet. Five miles west of Lester from 800-1000 feet of track bed toward Auburn has been undermined by water and small slides. Nine carloads of pigs halted at the N. P. depot in Cle Elum were fed and watered and returned to Yakima for rerouting through Pasco.

A Milwaukee train is isolated at Hyak. Passengers were removed by bus to Ellensburg and Spokane before Gold Creek Bridge at the head of Lake Keechelus went out. Milwaukee officials could give no indication when trains would be able to operate.

Greyhound bus service to Cle Elum is limited to one trip a day at 10 a.m. by way of Spokane and Wenatchee over Blewett.

At South Cle Elum the Yakima river went over its banks in places, flooding basements and yards. Several basements in Cle Elum, including the furnace room of the Eagles Temple, were also flooded.

No mail reached Cle Elum Sunday evening. Mail was trucked in and out from Ellensburg late Monday afternoon and again on Tuesday afternoon.