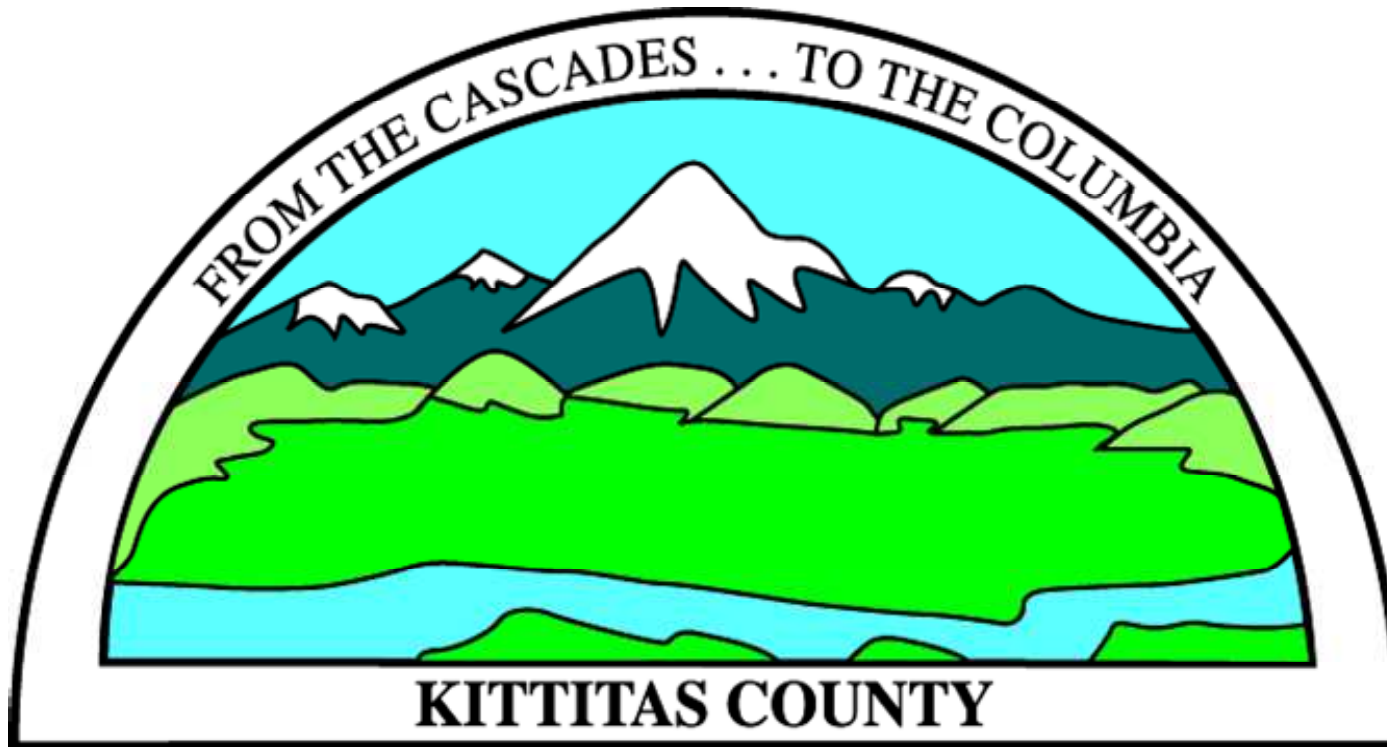
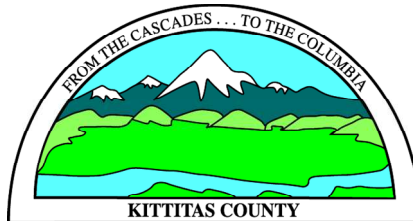


Kittitas County Comprehensive Plan Update 2006

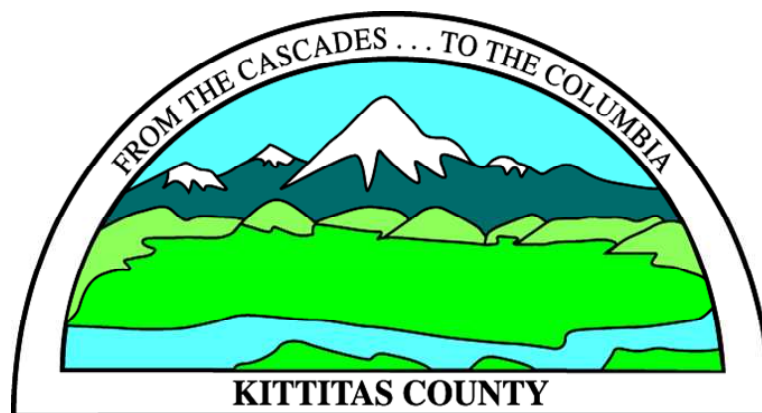


Staff Presentation Topics

- Public Participation and Process
- Scope of Work
- SEPA Review
- Population Allocation
- Land Use Designations
- Zoning
- Planning Commission Recommendation



Kittitas County Comprehensive Plan Update 2006



Public Participation and Process

Public Participation and Process

- 21 CDS Study Sessions with Board of County Commissioners – open to the public- beginning in April of 2005.

4/18/05, 4/25/05, 5/9/05, 5/16/05, 5/23/05, 6/6/05, 6/13/05, 6/20/05, 9/12/05, 9/19/05, 10/3/05, 11/7/05, 11/28/05, 12/5/05, 1/30/06, 4/3/06, 5/8/06, 5/15/06, 6/5/06, 9/25/06, and 10/16/06

- Public Meetings to develop the Scope of Work “Speak Out, Be Heard” Conducted on September 7, 2005 and September 8, 2005 in the upper and lower county.

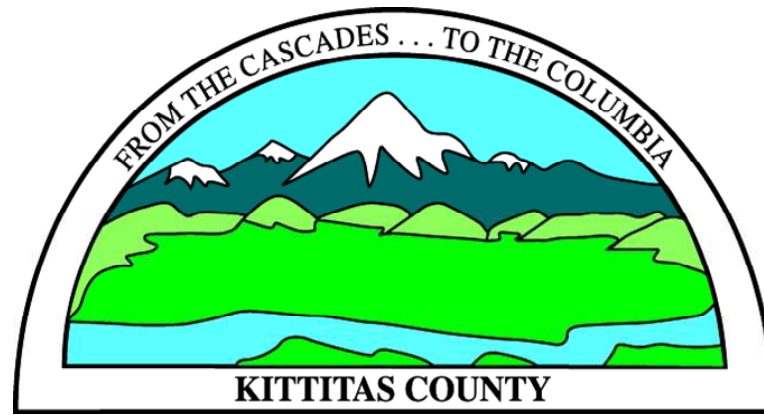
- Public Hearing – November 1, 2005 Board of County Commissioners - Scope of Work.

- Public meetings on November 16, 2005, November 17, 2005, December 7, 2005 and December 8, 2005 to seek input and comments on elements contained within the scope of work. Meetings held in upper and lower county.

Public Participation and Process

- Resource Lands Advisory Committee Meetings- meetings open to the public. Meetings held on 1/26/06, 1/31/06, 2/6/06, 2/15/06, 2/22/06, 3/6/06, 3/13/06, 3/20/06, 3/27/06, 4/3/06, 4/10/06, 4/24/06, 5/1/06, 5/8/06, 6/19/06, and 7/17/06
- Public Meetings/Open House on Resource Lands Advisory Committee recommendations and Comprehensive Plan Update. 5/24/06, 5/25/06, 5/30/06 and 6/1/06
- Planning Commission Public Hearings August and September 2006
- Board of County Commissioners Public Hearings October 2006
- This has been a bottoms up approach, in other words, it has been public driven not staff driven.

Kittitas County Comprehensive Plan Update 2006



Scope of Work

Scope of Work

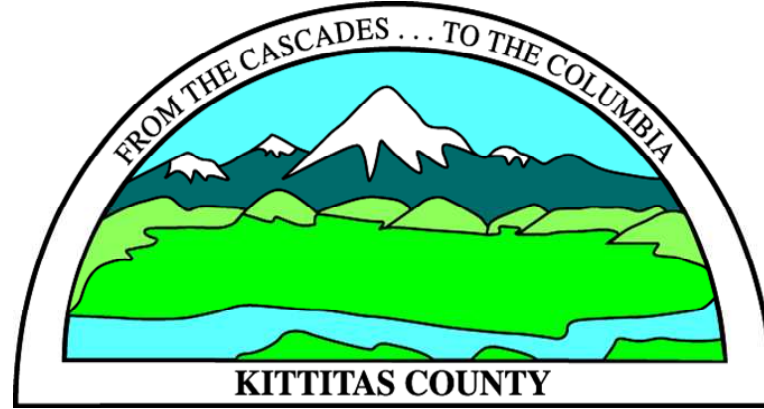
Adopted November 1, 2005

Resolution 2005-148

Six major areas

1. Mandatory Elements
2. Evaluate UGAs and UGNs
3. Affordable Housing Element
4. Resource Lands Advisory Committee
5. Relationship of Comprehensive Plan to other adopted Plans
6. Misc. Items

Kittitas County Comprehensive Plan Update 2006

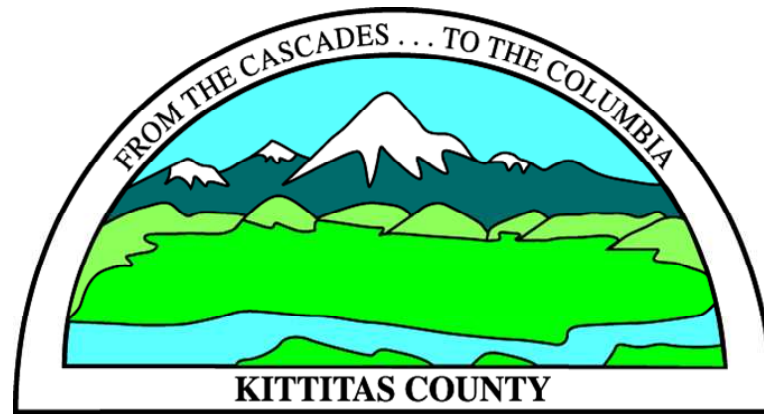


SEPA Review

SEPA Review

- On November 7 2006 Kittitas County issued a Notice of SEPA action for a Determination of Non-significance (DNS) on the Scope of Work for the 2006 Comprehensive plan update
- Kittitas County issued a SEPA addendum to existing environmental documents regarding the Scope of Work for the 2006 Comprehensive Plan Update on November 8, 2006
- The appeal period for the SEPA review ended on November 28, 2005
- No appeals were filed on the DNS or the SEPA addendum.

Kittitas County Comprehensive Plan Update 2006



Population Allocation

Population Allocation Process

- Consistent with process established in the County Wide Planning Policies
- Consistent with requirements of RCW 36.70.A
- Established for 20 year planning period 2005 -2025
- Allocation to each City and associated UGA consistent with the City comprehensive plan.
- Planning Goal – No regulatory requirement.
- Reviewed on a regular basis and adjusted as necessary.
- Conference of Governments is tasked with identifying the population number and allocation percentages.
- Conference of Governments adopted the High range as issued by State Office of Financial Management (OFM) in October of 2005.
- Conference of Governments adopted the percentage allocation in April of 2006.

Population Allocation by Jurisdiction

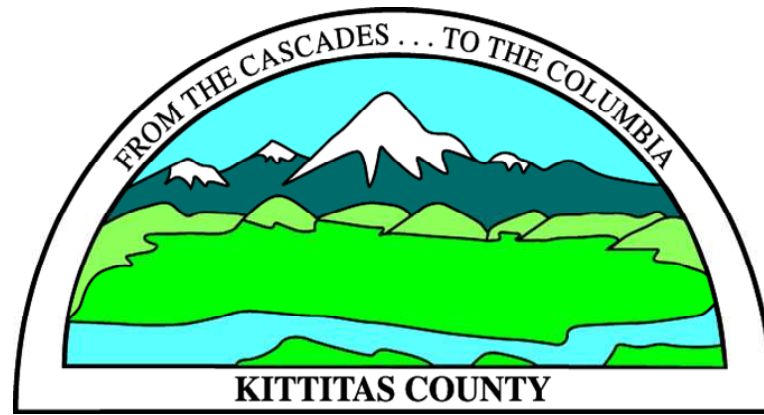
Jurisdiction	Previous %	Adopted % 4/26/06
Roslyn/UGA	1%	2.5%
S. Cle Elum/UGA	1.5%	2%
Kittitas/UGA	2.5%	3%
Cle Elum/UGA	19%	19%
Ellensburg/UGA	35%	45%
Kittitas County UGN	15%	10%
Totals to Urban Areas	74%	81.5%

Population Allocation by Jurisdiction

Jurisdiction	Allocation %	2025 Population
Roslyn/UGA	2.5%	1,320
S. Cle Elum/UGA	2%	1,056
Kittitas/UGA	3%	1,584
Cle Elum/UGA	19%	10,034
Ellensburg/UGA	45%	23,764
Kittitas County		
Urban Growth Nodes	10%	5,281
Non Urban County	18.5%	9,771
Totals	100%	52,810

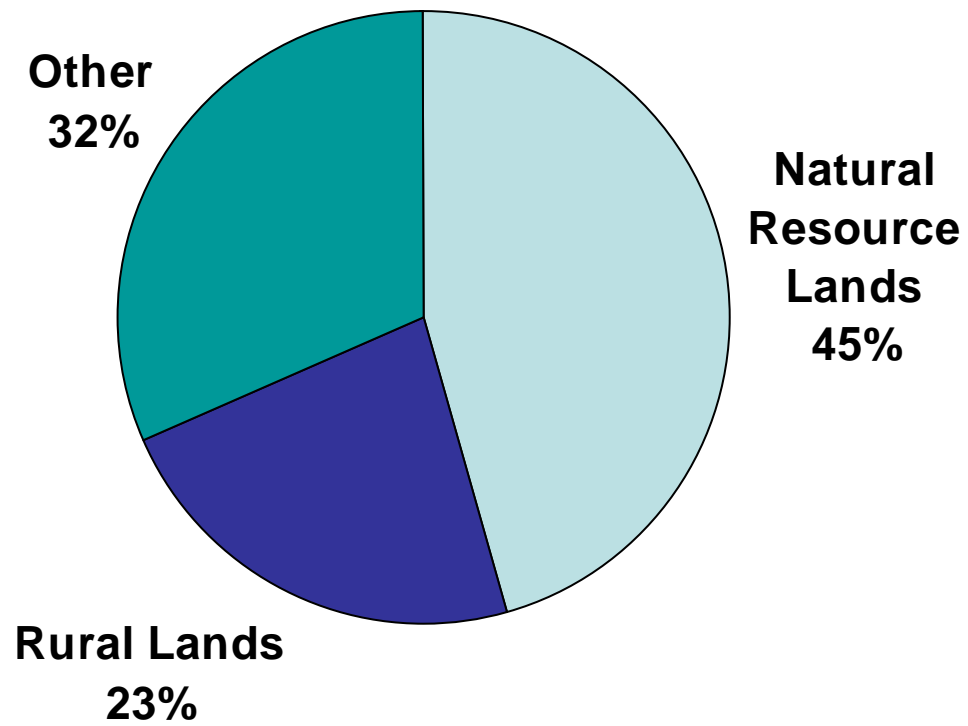
Adopted by Conference of Governments April 26, 2006

Kittitas County Comprehensive Plan Update 2006

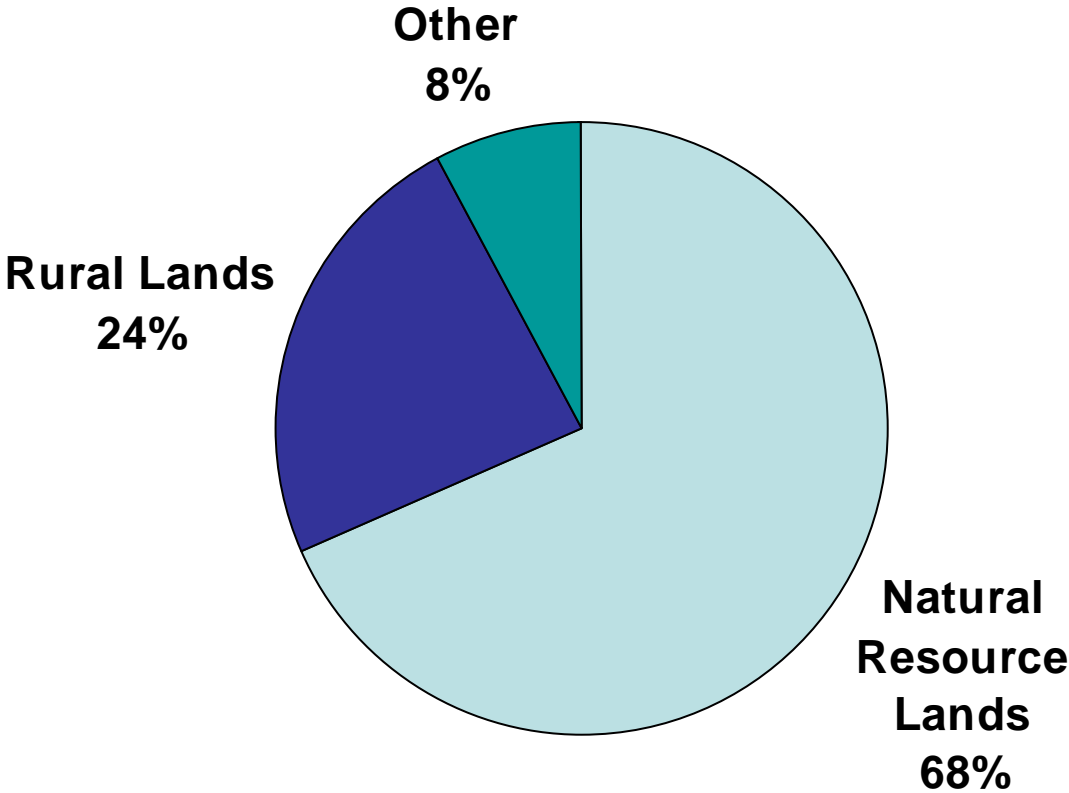


Land Use Designations

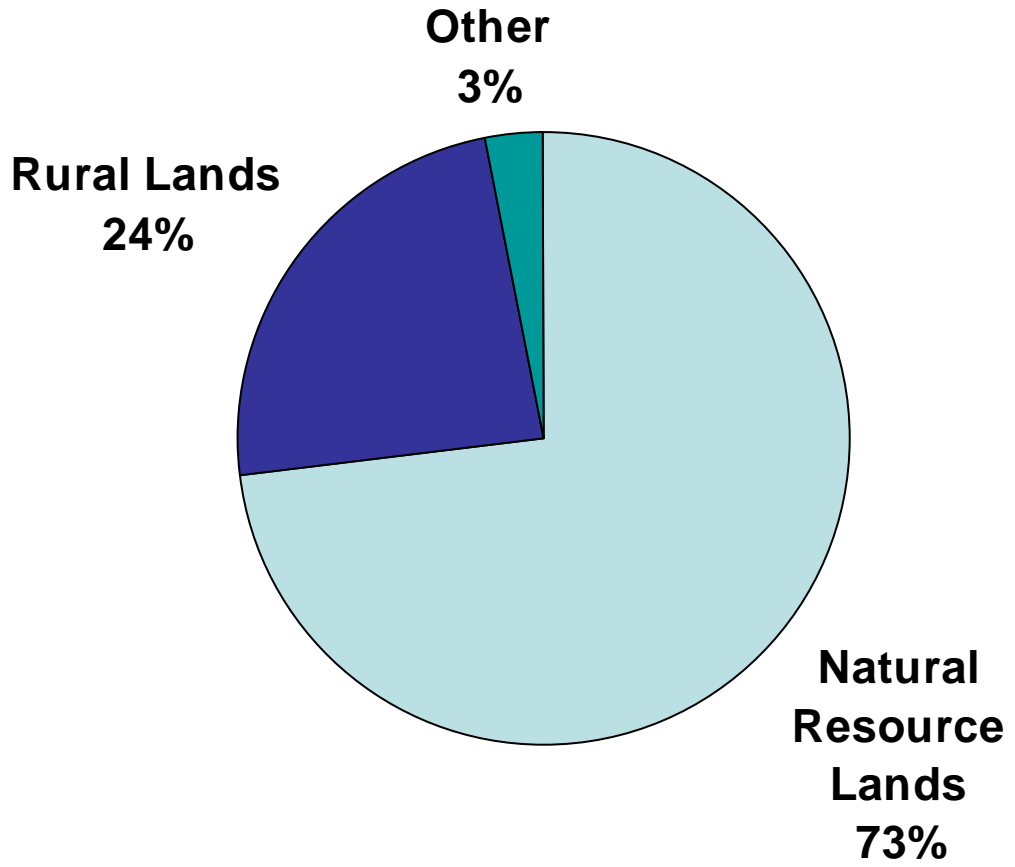
1997 Land Use Designations



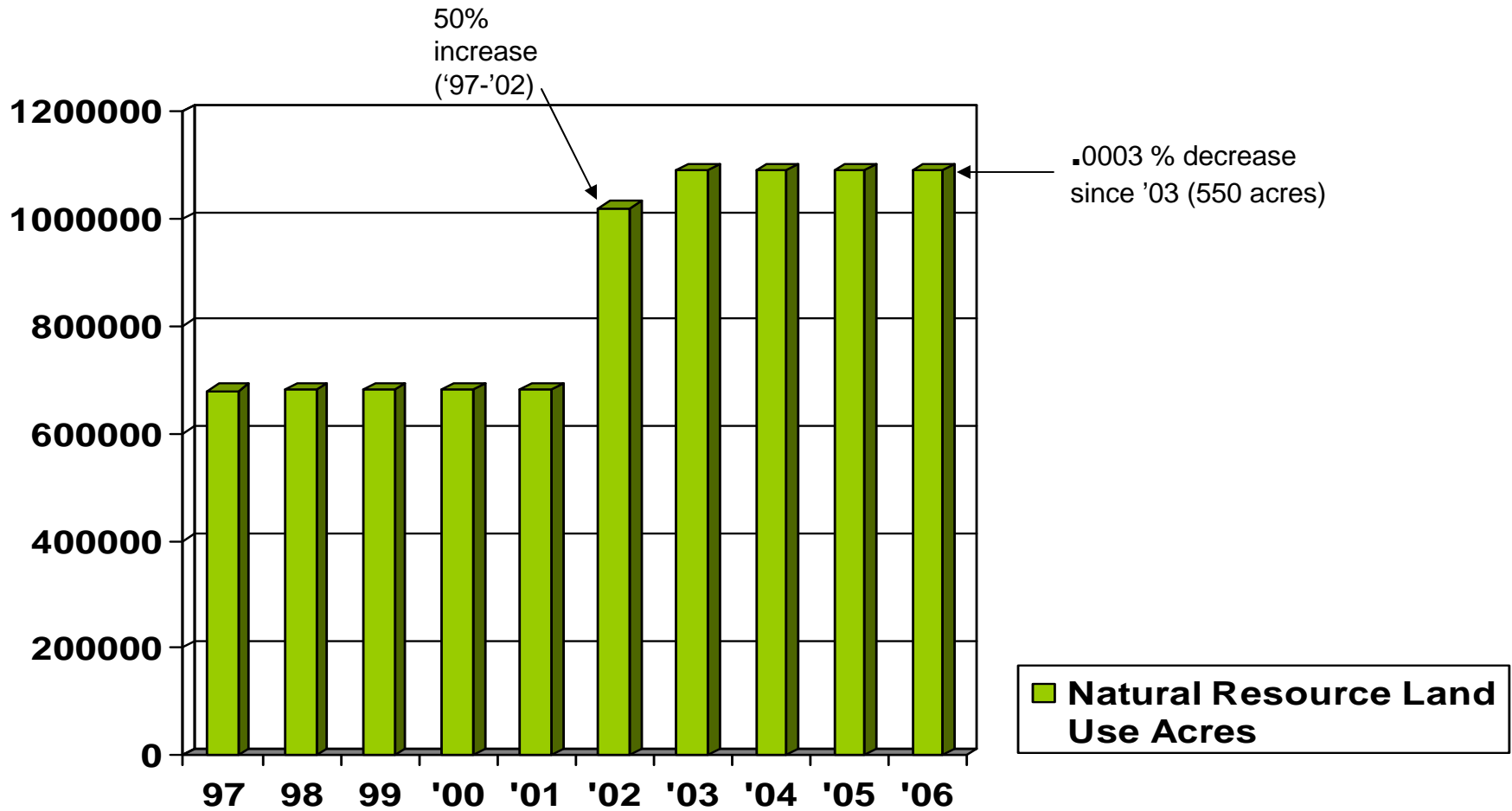
2002 Land Use Designations



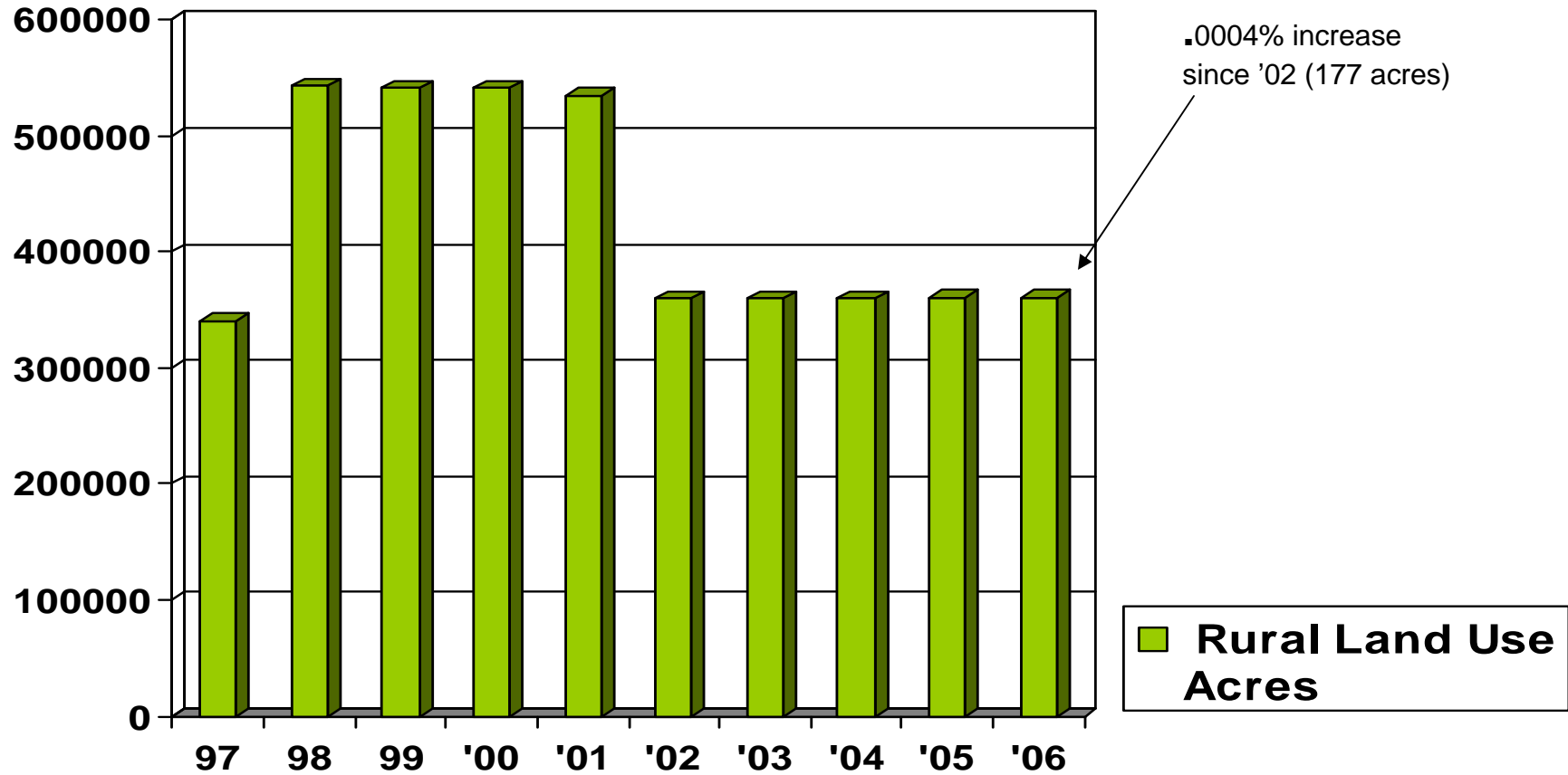
2006 Land Use Designations



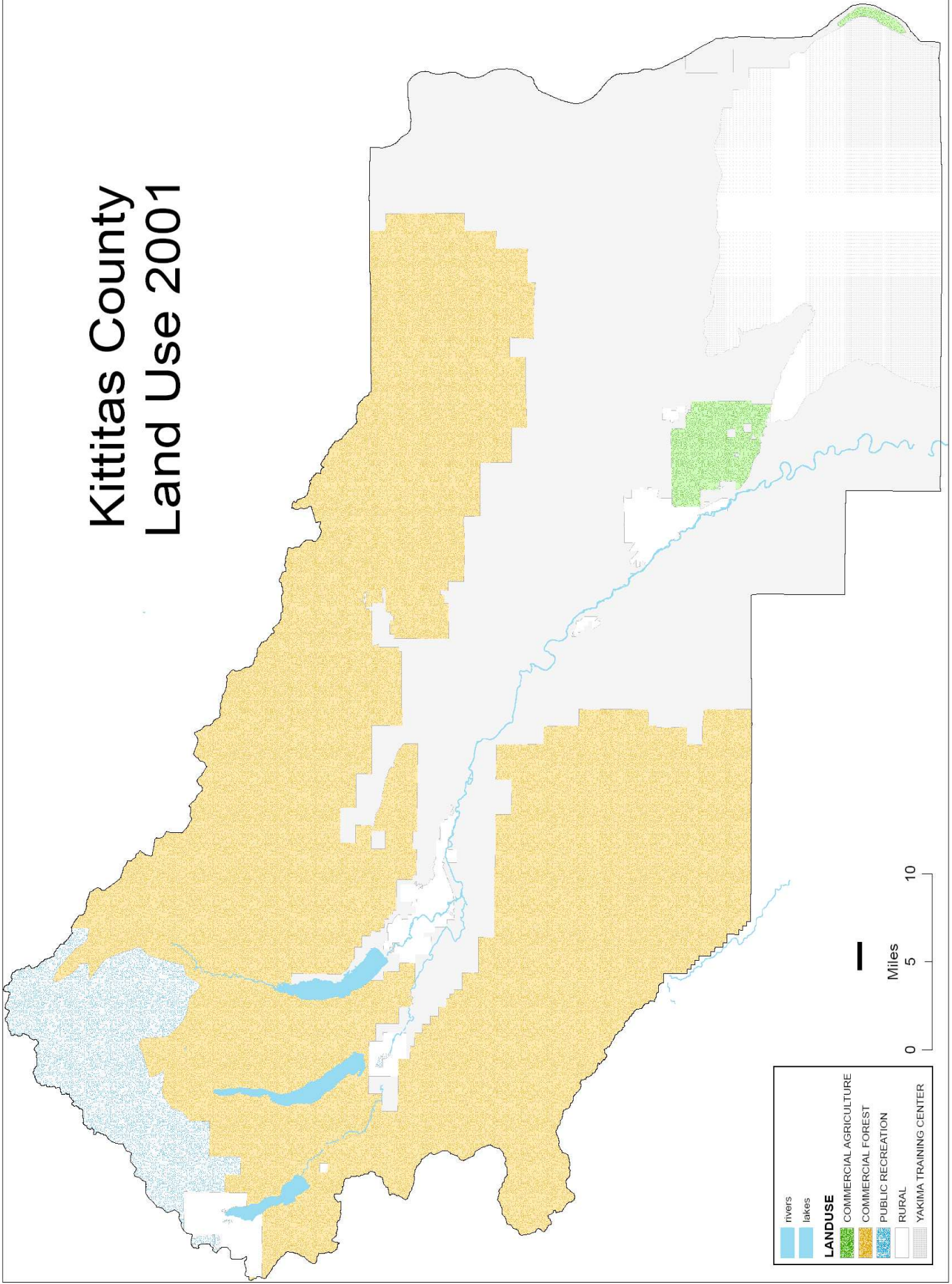
Natural Resource Lands



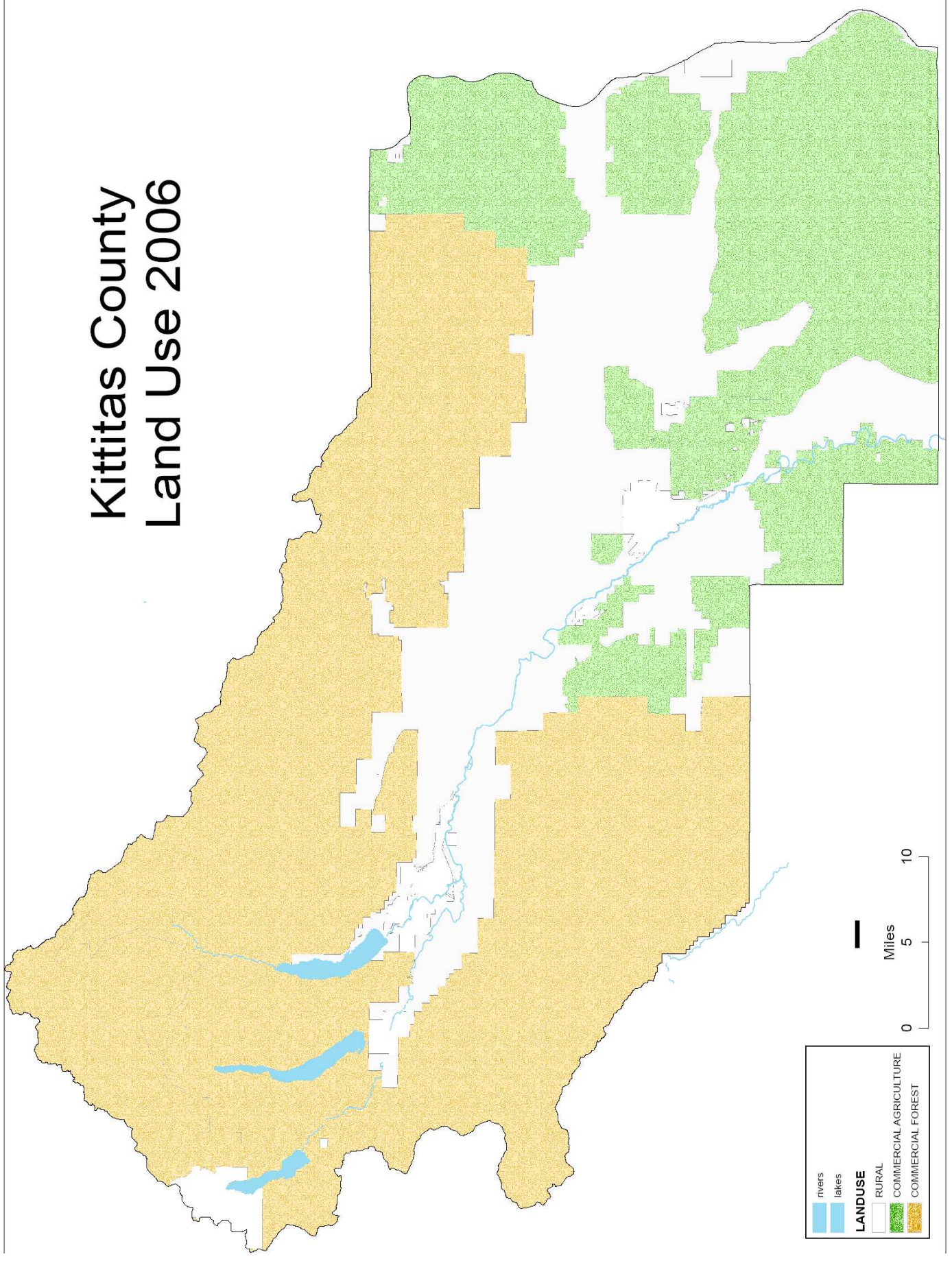
Rural Land Use



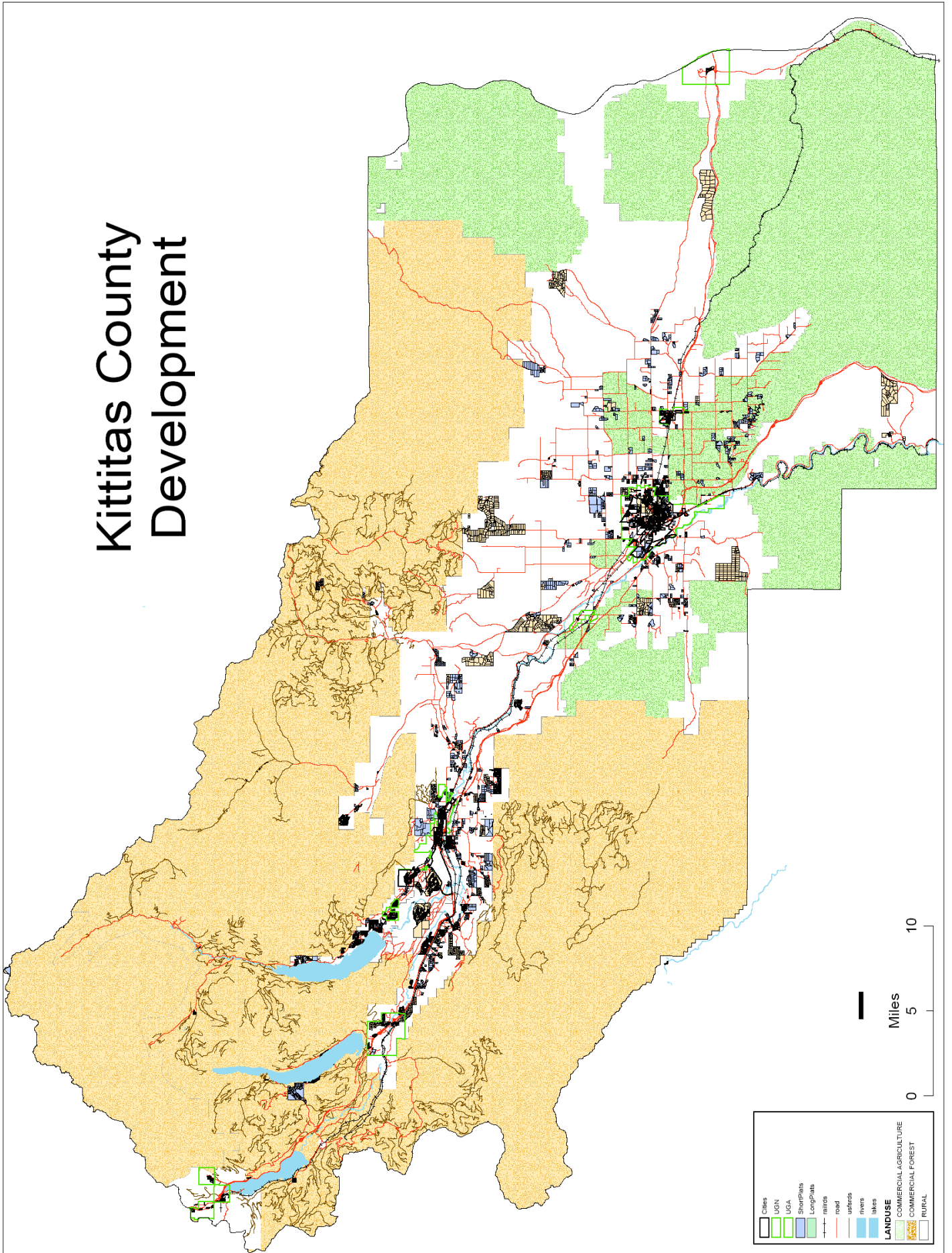
Kittitas County Land Use 2001



Kittitas County Land Use 2006



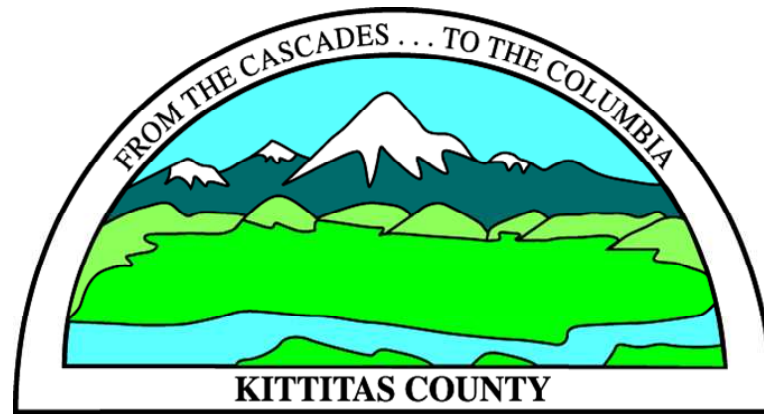
Kittitas County Development



City	UCIN	UCA	ShenPlets	LongPlate	railroad	road	usroads	river	lake
LANDUSE									
COMMERCIAL AGRICULTURE					COMMERCIAL FOREST				
RURAL					RURAL				

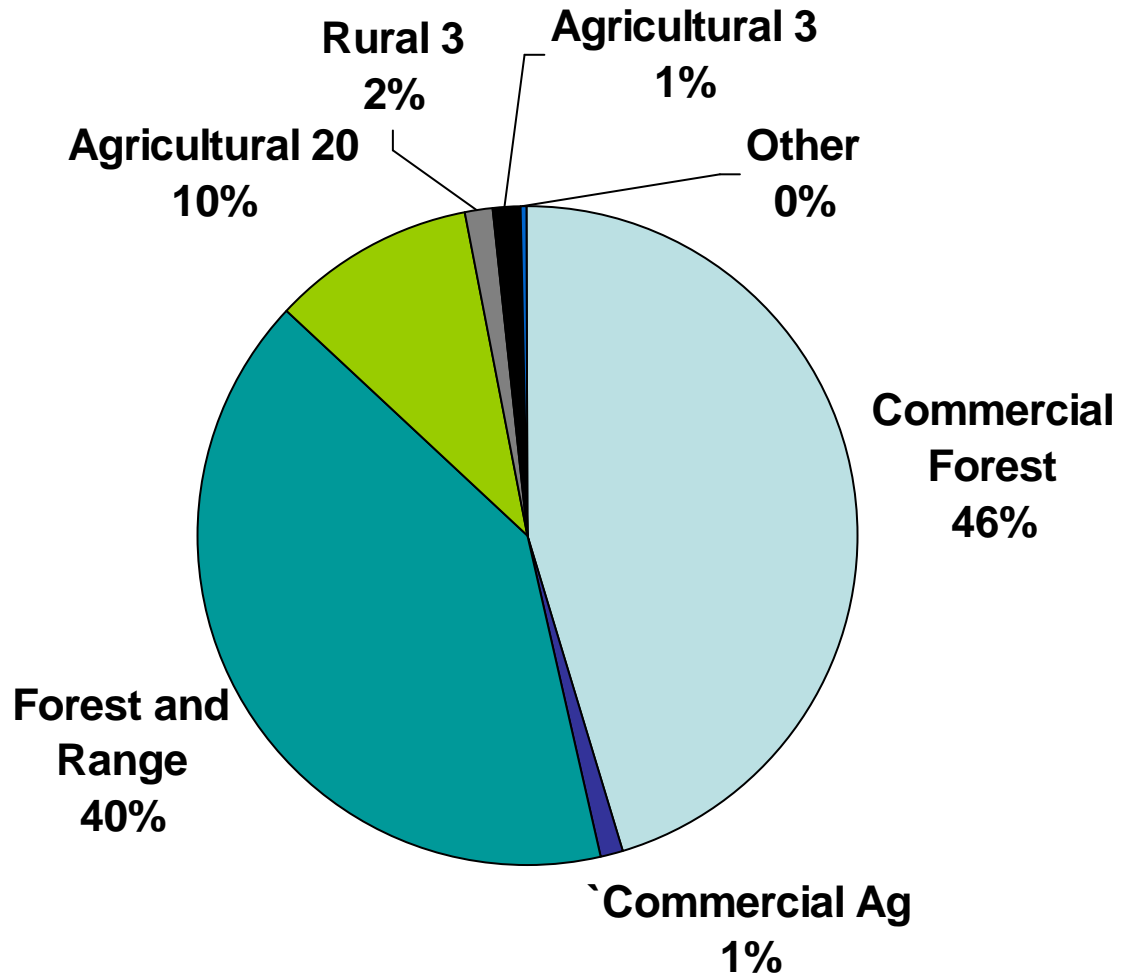


Kittitas County Comprehensive Plan Update 2006

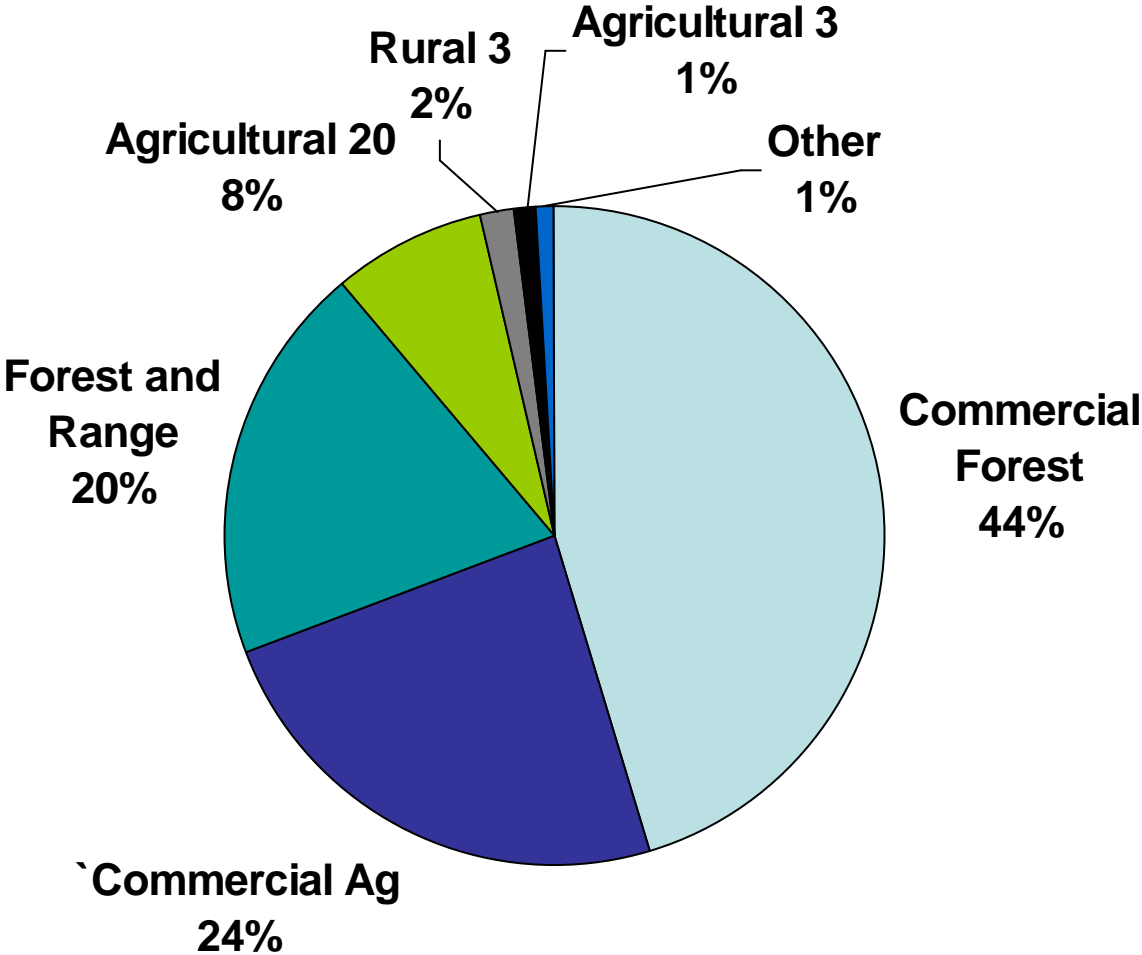


Zoning

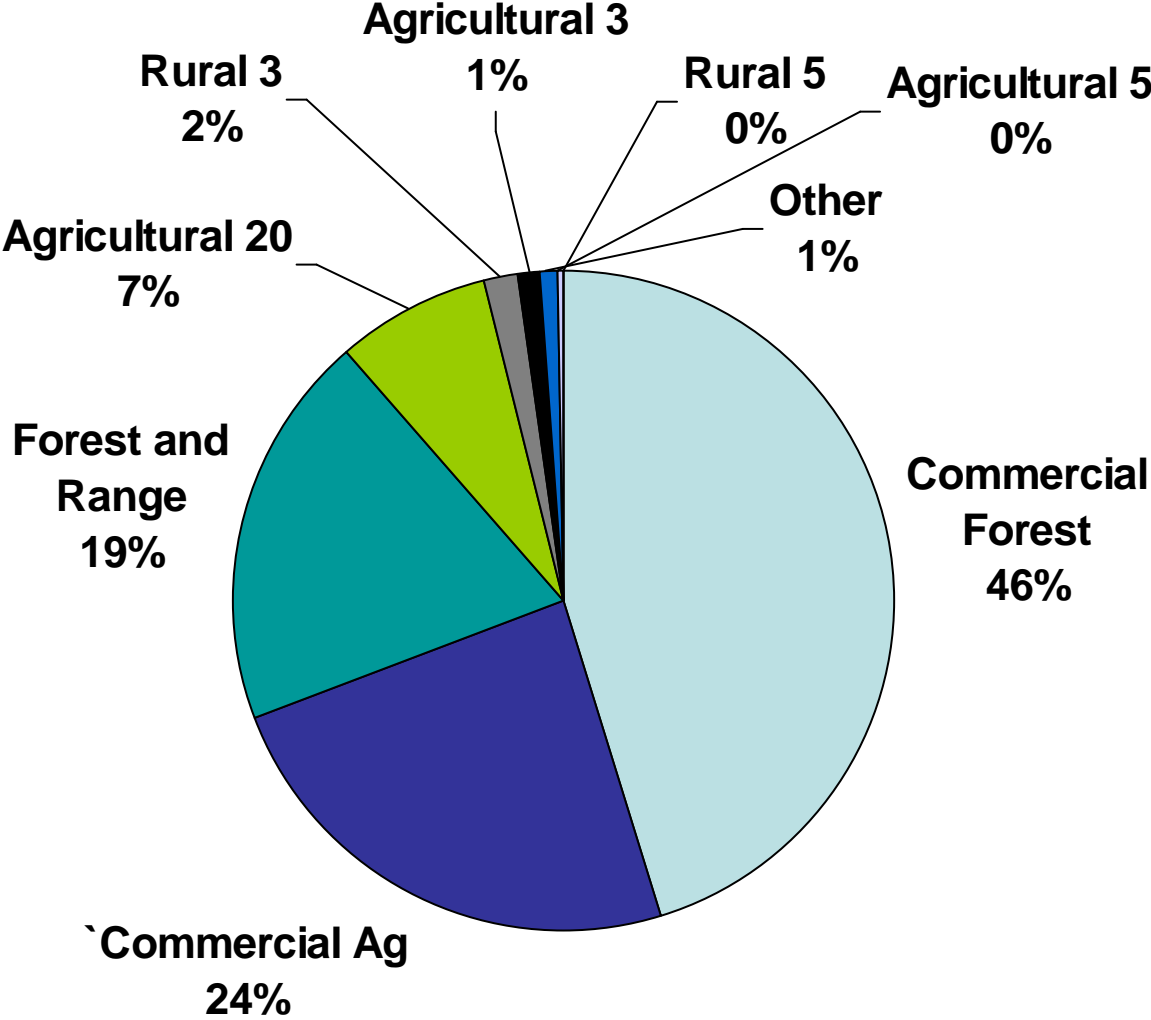
1997 Zoning



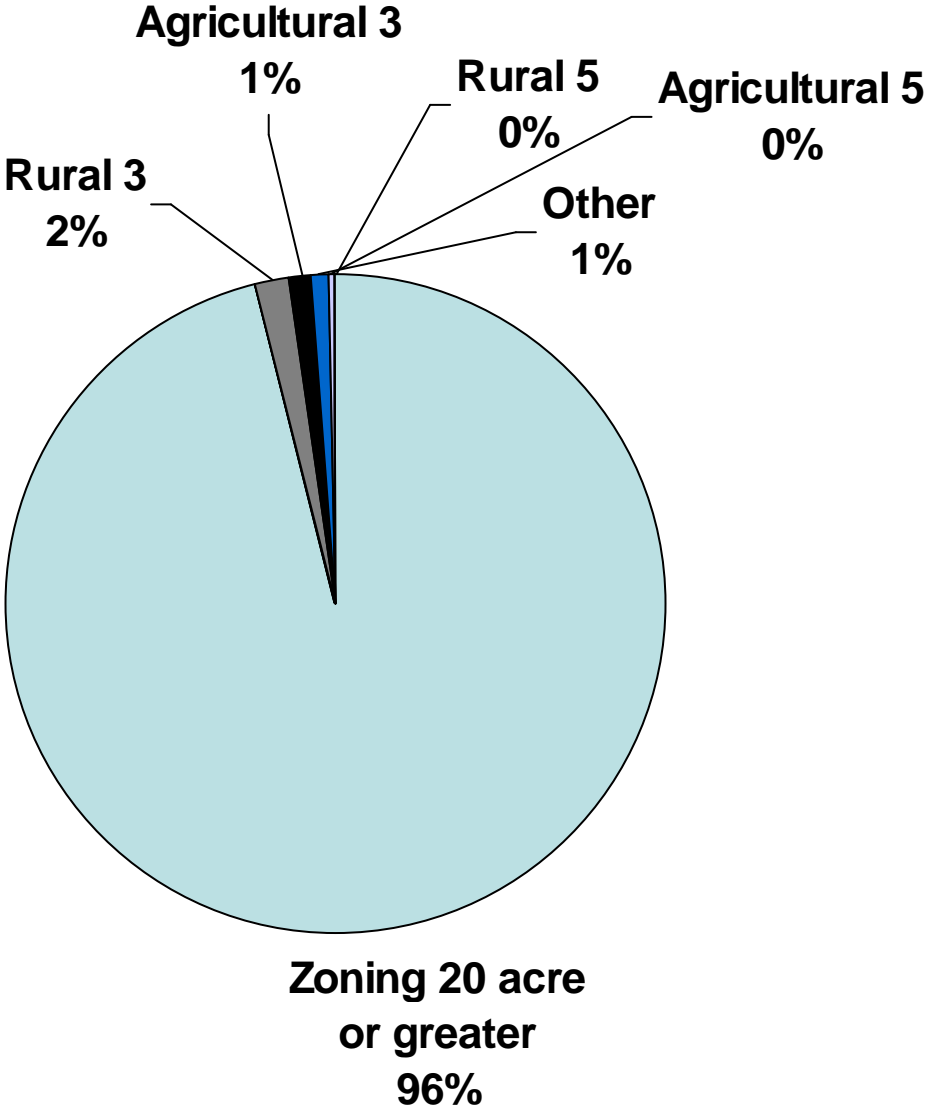
2002 Zoning



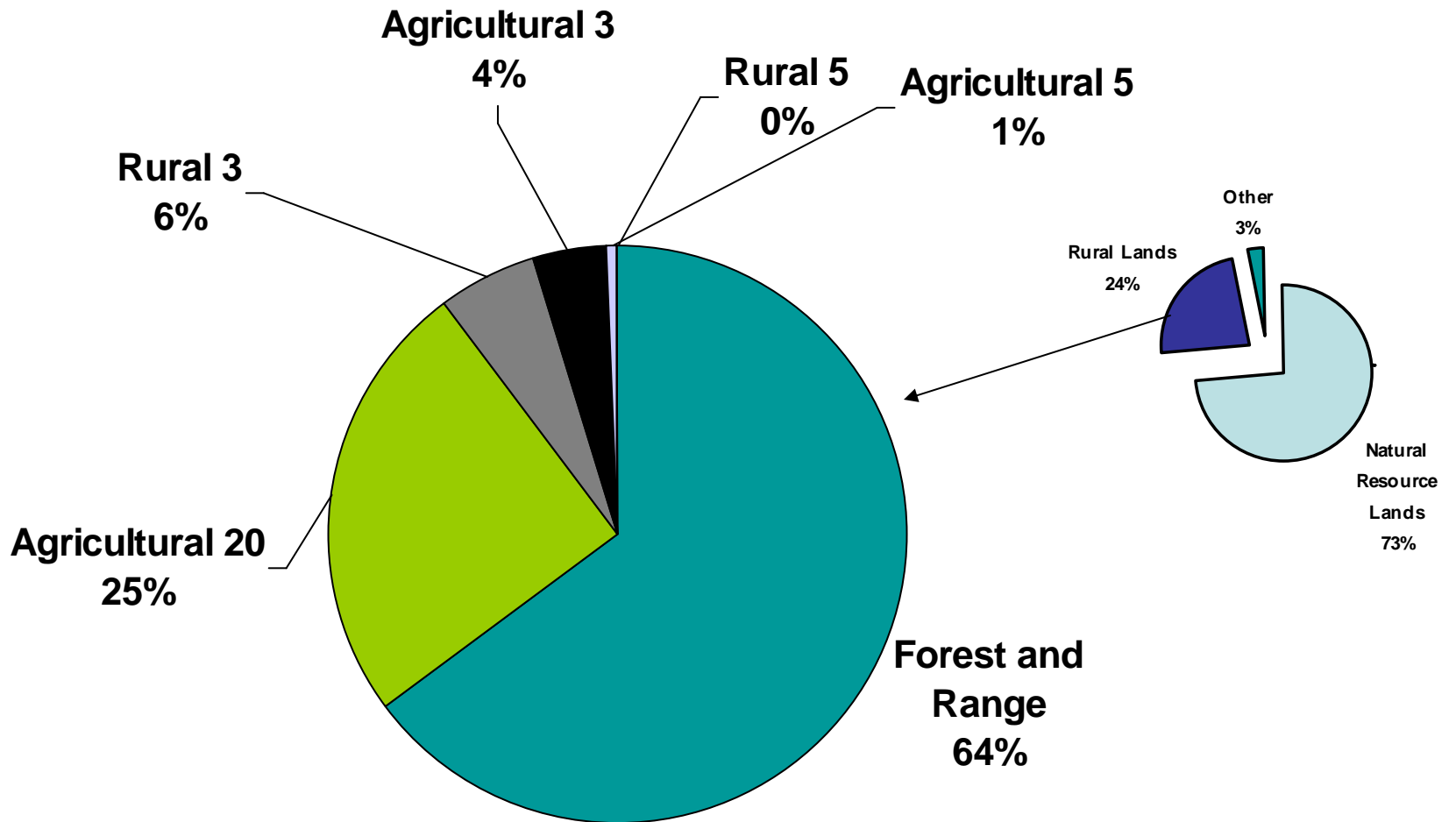
2006 Zoning



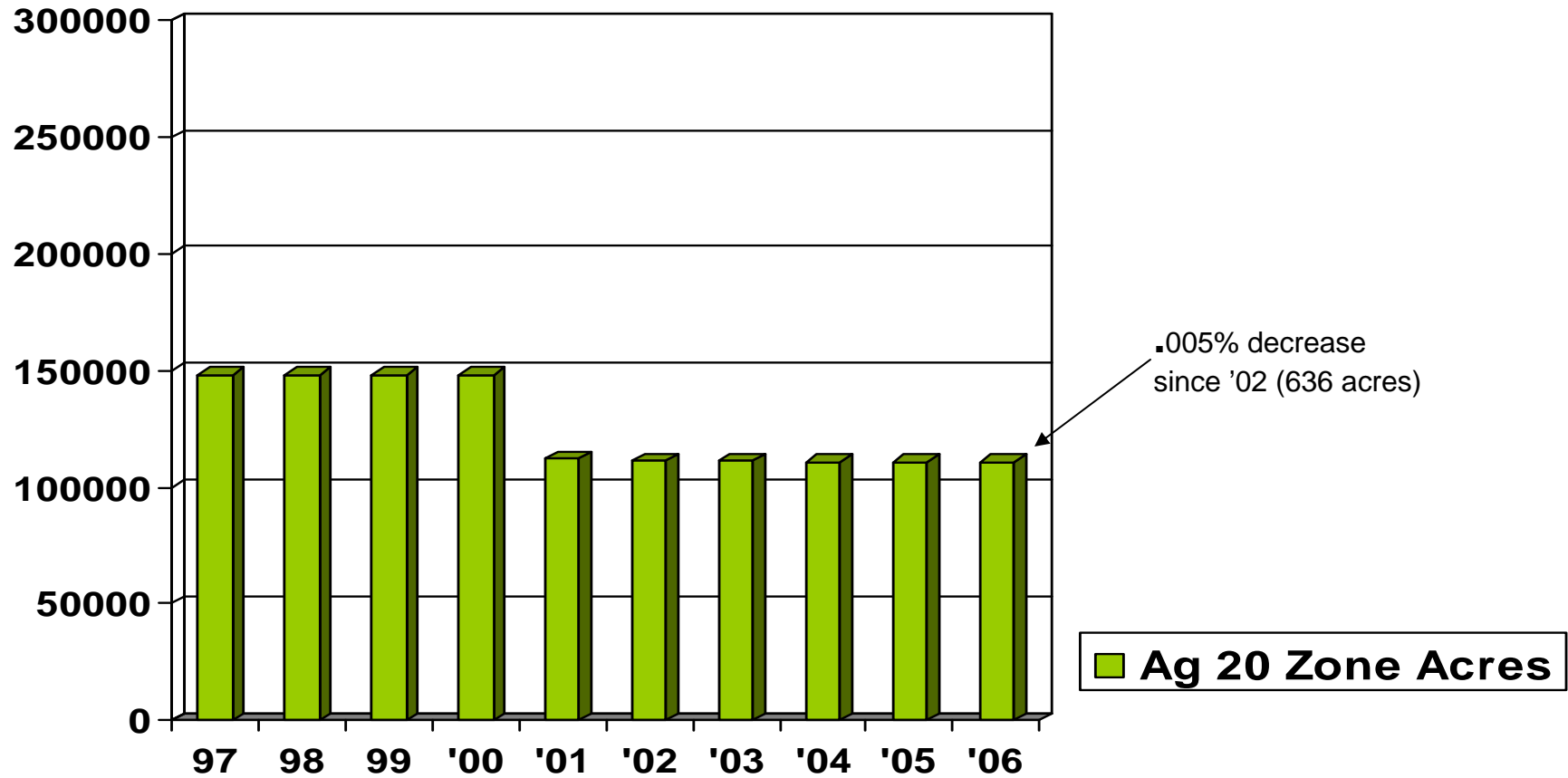
2006 Zoning



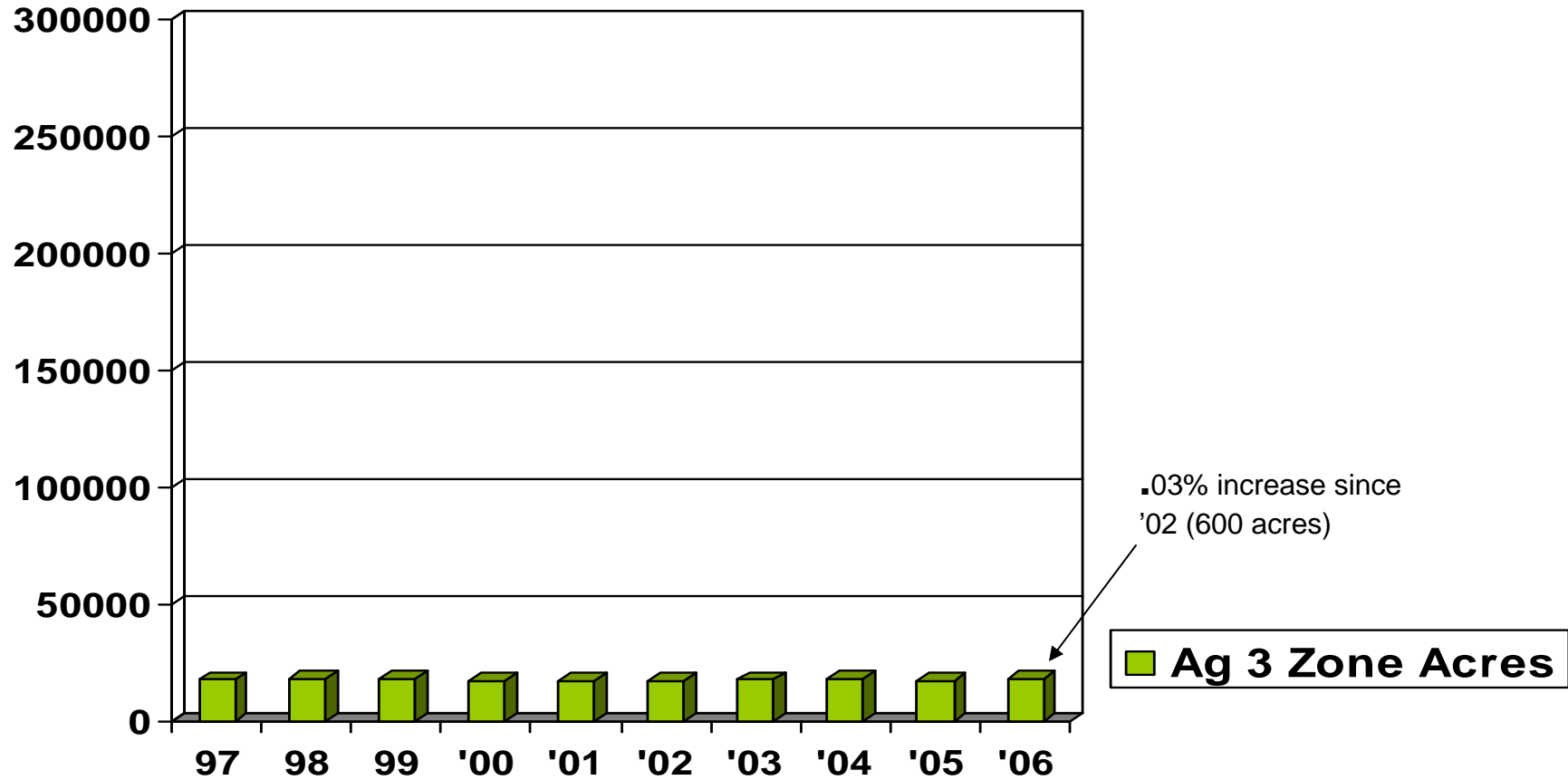
2006 Zoning in Rural Land Use Designation



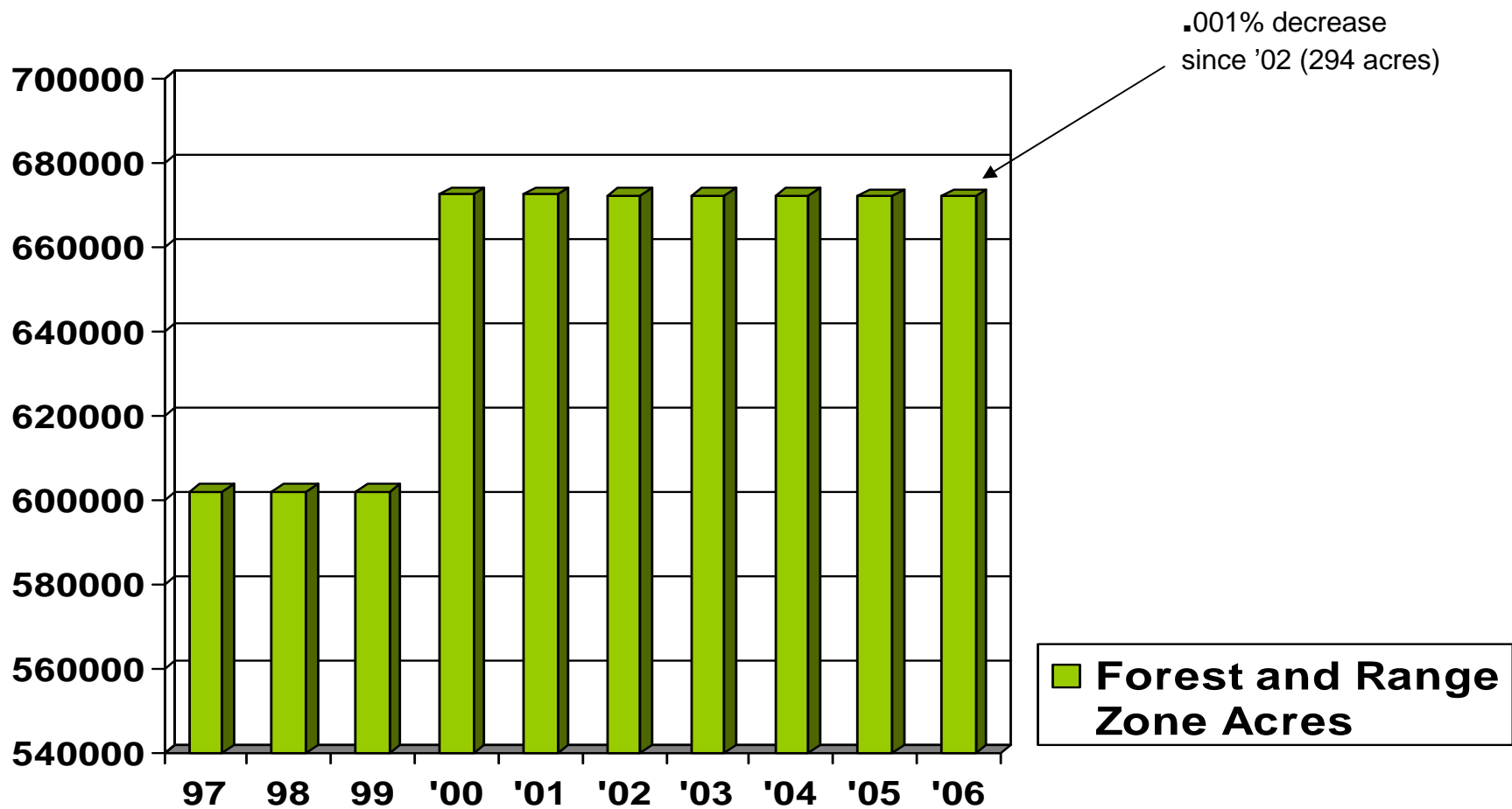
Agricultural 20 Zone



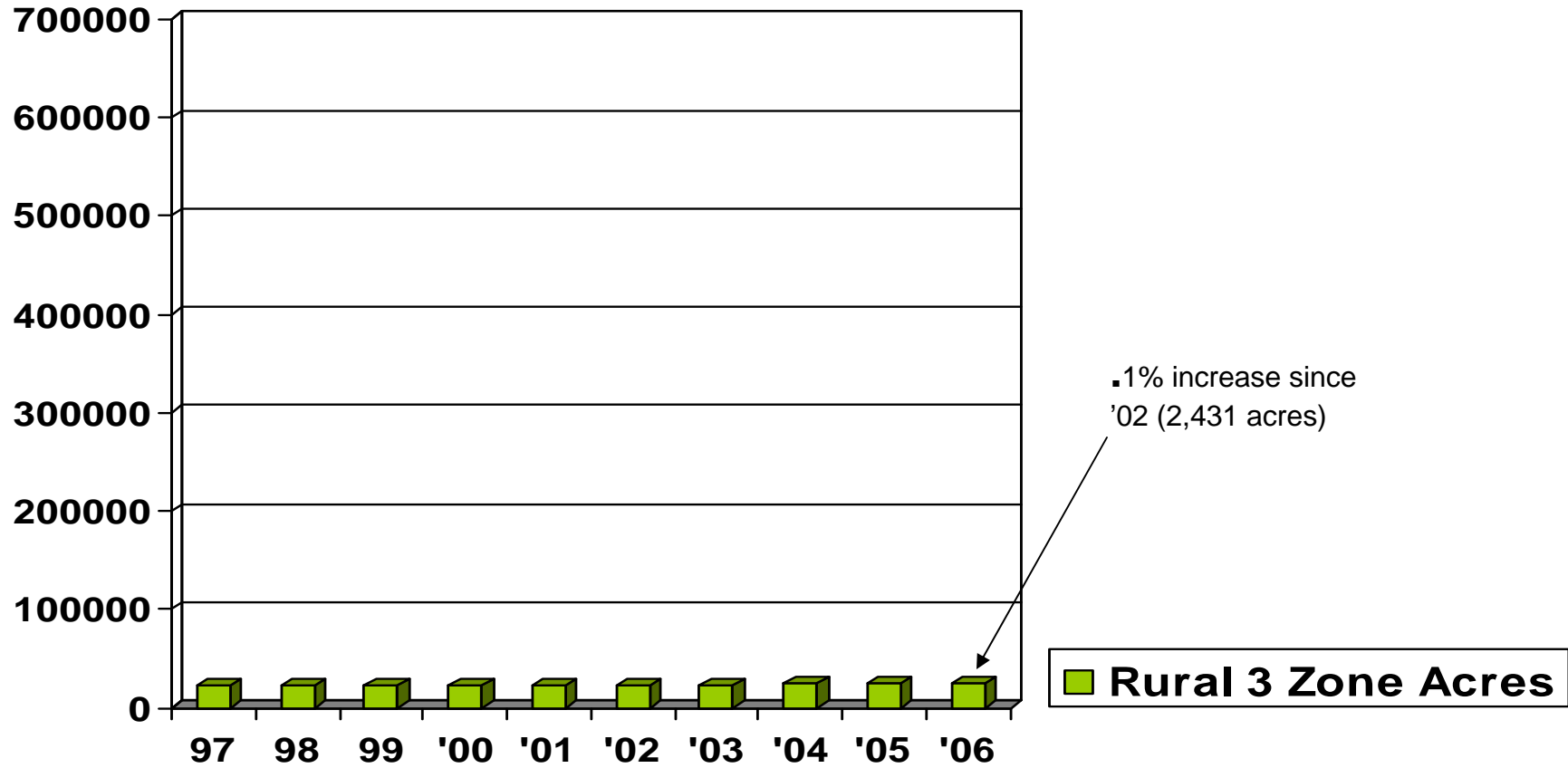
Agricultural 3 Zone



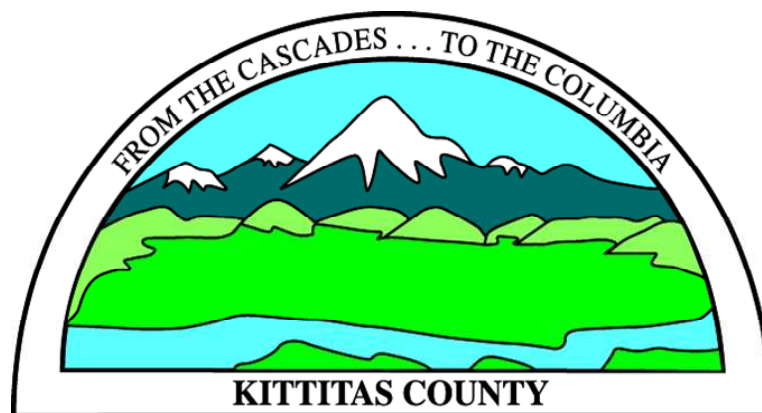
Forest and Range Zone (20 acre)



Rural 3 Zone



Kittitas County Comprehensive Plan Update 2006



Planning Commission Recommendation

Planning Commission Recommendation

- Recommendation forwarded to Board of County Commissioners on October 5, 2006
- Document is available on the County Website, On CD and in Hard Copy.

Kittitas County Comprehensive Plan Update 2006

