

Kittitas County 2012 Preliminary Budget Narrative

Fair 109 Department

Departments Mission:

Kittitas Valley Event Center

Revised September 9th, 2008

The Kittitas Valley Event Center's mission is to provide outstanding service and a safe and friendly meeting and recreational environment to Kittitas County residents and all users of the facility. The staff is committed to actively promoting the features and benefits of the Event Center as the ideal Central Washington facility for a wide variety of events including, but not limited to government, community, club, and private organizations and agencies. The staff is dedicated to supporting the Kittitas County Fair Board and the Ellensburg Rodeo Board of Directors and the hundreds of volunteers who orchestrate the Kittitas County Fair and Ellensburg Rodeo. The staff is further committed to continually enhancing and protecting the assets of the Kittitas Valley Event Center.

Kittitas County Fair

Revised and Adopted May 20, 1999

Operating under the authority of the Kittitas County Board of County Commissioners, the Fair Board is responsible for conducting the Annual Agricultural County Fair. We are committed to enhancing the Fair and providing education and appreciation of agriculture, natural resources, environment, health, history, cultural enrichment, arts, entertainment, and recreation. The Fair Board is dedicated to continually upgrading the Fair in the belief that a strong County Fair benefits all residents of Kittitas County. The Fair Board will perform their duties to the benefit of the residents of Kittitas County.

Departments Goals and Objectives:

In 2012 the Kittitas Valley Event Center will continue to raise the bar of service and, focus on facility maintenance and program enhancements. The Kittitas Valley Event Center staff is committed to the following five long term goals:

- Providing the highest level of professional and outstanding customer service;
- Streamlining and strengthening operational services;
- Continuing to upgrade, modernize, and enhance facility buildings and site, within reasonable budget parameters and consideration of historic site guidelines;

- Actively promoting facility use to returning and new local, state, and regional facility users; and,
- Continuing to work cooperatively and supportively with the Kittitas County Fair Board and the Ellensburg Rodeo Association and their ancillary organizations; and 4H/FFA clubs and CWU Extension Office.

To effectively meet these goals the following objectives will be met in 2012.

- Integrate the acquisition of the Armory into our meeting/event room makeup.
- Expand and shift our marketing of the Event Center and Kittitas County Fair to encompass the shift to user content web sites. Take advantage of various multi-media technologies to further promote KVEC
- Continue to review, update as needed and finalize, via BOCC resolution applicable user fees for both the Kittitas County Fair and Kittitas Valley Event Center "Off-Season" facilities.
- Focus on Event Center Programs – Events that we can sell/rent space and services.
- Purchase equipment that will reduce labor intensive endeavors
- Spend money on fixtures and/or equipment that will reduce annual rental costs
- Paint the exterior of our livestock barns
- Expand restroom capacity
- Update equipment used for the Kittitas County Fair

Off-Season Department Accomplishments:

2011 was a difficult budget year for the Event Center. Despite another tough budget cycle here are some of the departmental accomplishment:

- Painted interior floor of Teanaway Hall
- Resurfaced sections AA-JJ seating in Rodeo Arena
- Upgraded outdoor electrical fixtures in Behind the Chutes area
- Expanded landscaping throughout the grounds, added new sprinkler system
- Came into compliance with City of Ellensburg water audit
- Improved lighting and security in Frontier Village
- With coordination of the Rodeo Board added new outdoor pens to Rodeo Arena
- Added new amenities (projectors, portable bars, staging) for revenue generating rental opportunities
- Stained the exterior of Gold Buckle Building
- Attended all Rodeo Board meetings to keep open lines of communications with Rodeo Board

Fair Accomplishments

The 2011 was very successful. We met and/or exceeded all of our revenue goals. In addition we came in under budget in several key areas. In 2011 we instituted a number

of rate increases which proved to be successful. With Fair revenues over \$425,000, this year's Fair was the highest grossing Fair ever. In addition to outstanding revenues, our annual attendance over the weekend has topped 73,000.

The Fair Board was also able to secure a \$5,000 grant from the city lodging tax committee.

The Livestock auction produced revenues near \$500,000 which stayed within the community.

2012 Budget issues:

MANDATED SERVICES:

Kittitas County Fair:

RCW 15.76.100

Declaration of public interest -- Allocation of state funds authorized.

It is hereby declared that it is in the public interest to hold agricultural fairs, including the exhibition of livestock and agricultural produce of all kinds, as well as related arts and manufactures; including products of the farm home and educational contest, displays and demonstrations designed to train youth and to promote the welfare of farm people and rural living. Fairs qualifying hereunder shall be eligible for allocations from the state fair fund as provided in this chapter.

RCW 36.37.010

Fairs authorized -- Declared county purpose.

The holding of county fairs and agricultural exhibitions of stock, cereals, and agricultural produce of all kinds, including dairy produce, as well as arts and manufactures, by any county in the state, and the participation by any county in a district fair or agricultural exhibition, is declared to be in the interest of public good and a strictly county purpose.

The 2011 operating budget for the County Fair is \$337,000.00. Budgeted revenue for the 2011 Kittitas County Fair was \$396,000, with a budgeted return to the County of \$59,000 profit. While not final, as of the writing of this budget document, the revenue for the 2011 County Fair is \$425,000. We still have some bills outstanding, but we are anticipating a net income of \$80,000 from the Fair. The revenue streams for the County Fair include: Admissions, Parking Fees, Carnival Revenue, Rodeo Lease, Commercial Rentals, Food Concessions, Cash Sponsorships, and Souvenir Sales.

Looking at the big picture, the Labor Day weekend, which includes revenue not only from the Fair, but also from the Rodeo, Livestock Sale, and Carnival – we estimate over 1.5 Million dollars in generated over the entire weekend.

SUPPORT SERVICES:

4-H Contract

Kittitas County has entered into contract with the Kittitas County 4-H Council.

Purpose: *"Official (active) 4-H Club activities, Pre-Fair and Fair Activities, 4-H Shows, Monday Practice Rides, 4-H Dog Practice nights."*

The scope of this contract results in the rental of various meeting spaces, barns, and arenas to support the preparation of the various 4-H Clubs for participation at the County Fair. The events date span from early February through the Kittitas County Fair. The contracted fee is \$1.00 for the contracted dates and buildings.

All other official 4-H club activities held on the Event Center will be at a 70% reduction of existing rates. Additional fees also include usage of Bloom Pavilion, the Rodeo Arena, and the Hunt Memorial Dog Arena. Normal bedding fees and exhibitors fees also apply.

OTHER

Ellensburg Rodeo Contract

The Ellensburg Rodeo occurs annually in conjunction with the Kittitas County Fair. It is not a statutory requirement to hold the Rodeo, not does it directly support the execution of the Kittitas County Fair – therefore it is located under this heading. However, it should be noted that the Ellensburg Rodeo is very closely tied and is an integral part of the overall production of the Kittitas County Fair. It is the opinion of the Event Center that if the Ellensburg Rodeo did not coincide with the Kittitas County Fair – the financial impact on the Kittitas County Fair would be detrimental. The terms of the existing contract end in 2016.

Purpose: *"Lessee will conduct a professional Rodeo and other such activities as the Association shall choose in conjunction therewith including but not limited to 'slack performances', bull riding, night shows, concessions, 'Behind the Chutes' souvenir sales and the operation of arenas of general public entertainment on the premises for the period of the lease."*

The contracted begin the Monday two weeks preceding the advertised first day of the Rodeo and shall end Wednesday following Labor Day. The contracted fee is \$34,000.

In addition to the revenue provided by the Ellensburg Rodeo, the Rodeo Board Association provided nearly \$50,000 worth of new pens on the north side of the Fairgrounds. The Ellensburg Rodeo continues to be a valuable ally and supporter of the capital projects in and around the arena.

Carnival Contract

Much like the Ellensburg Rodeo contract – the Carnival contract is not mandated, nor does it directly support the statutory requirements of holding the Kittitas County Fair. However, given the close ties between Fair activities and the Carnival, loss of the Carnival would be severely detrimental to the overall success of the Kittitas County Fair. The existing contract expires at the conclusion of the 2012 Fair.

Purpose: *“Provide for operation of a carnival and related facilities for family entertainment during the 20XX Fair. The carnival and related facilities shall include: amusement rides, novelty concessions, game concessions, and food concessions.”*

The Kittitas County Fair receives compensation for the Carnival in one of two ways:

- 35% of Presale Ticket Promotion
- 30% of On Site Ride Gross Ticket Sales
- \$165.00 for Novelty Sales
- \$165.00 per each game concession (X 16 Concessions)
- \$175.00 per each food concession (X 3 Concessions)

VS.

- \$60,000.00 Guarantee

During the upcoming year we will be addressing our carnival provider as well as other carnival providers to secure the best possible carnival contract.

RV Camping (Parking Fees)

KVEC has 5 locations with water and electrical hookups capable of serving RVs and horse trailers. KVEC's RV Camping revenue is generally generated from one of two reasons: 1) Event or Group affiliated camping or 2) Individual camping.

In 2011 we our rental fees in a number of areas including RV Camping

- **Event Camping:** Events such as Cascade Cow Cutters, College Rodeo, Back Country Horsemen, and several other events often bring RVs and horse trailers and stay on the Event Center grounds. In addition to their meeting space rental and/or Arena rentals they will pay a parking fee. The Event /Group Rate is \$13.00 per rig.
- **Individual Camping:** KVEC also services guests staying that are not affiliated with a specific event or group. Typically the individual camping are those individuals that also need to house their animals as they travel. Individual rates are \$20 a night for hookups - \$8.00 for no hookups.

The 2011 budgeted revenue for Parking Fees is \$21,000. As of Sept 16, 2011 \$14,500 has been realized. In late May of this year, we lost two significant camping events, High School Rodeo and a Cascade Cow Cutting Event. Given the event earlier in the year, I don't believe that the Event Center will fully realize it's projected parking revenue. That accounts for approximate \$3,000.

Haul-In Passes

During the months of October – March patrons of the Event Center may purchase a "Haul-In Pass". This pass will allow the rider to exercise their horse in Bloom Pavilion. It is \$50 for the month and \$25 if you buy the pass after the 15th of the month. There are set Haul In pass times for patrons to use the facility. If the facility is not book, Haul-In Pass holders can come and use the facility at those times as well.

Each person who stables an animal will also receive a Haul-In Pass. Haul In pass revenue for January '11– March '11 was \$1,670. Given that the time we sell Haul-In passes, goes over the fiscal year – it should be noted that the \$3,850 excludes sales of October, November, and December of 2010.

Meeting Room Rental (Short Term Rentals)

Roughly 11 months out of the year the Event Center rents out meeting and event space for a variety of reasons. The range of attendees for any one event can be as little as 10 and as large as several thousand over the span of a few days. The range of income from "Off Season" events can be anywhere from \$40.00 to upwards of \$5,000.00 over the course of a weekend. Meeting space can be rented by the hour or for a full day.

Included in the room rental fee is the setup of the room as well as a number of complimentary amenities which include:

- 6' or 8' rectangular tables
- 6' round tables
- Chairs
- PA System
- Internet Access
- TV/VCR
- Overhead Projector
- Data Projector
- Stage Risers
- Portable PA System
- Coffee Urns

A complete breakdown of our current room rental rates is listed as Appendix A.

Events occur both during normal business hours as well as off hours. Off Hour events are not staffed by the Event Center.

The Armory will provide the Event Center with an additional room to rent for offseason revenue that was not there in 2011.

Bloom Arena Rentals/Rodeo Arena Rentals (Short Term Rentals)

While still billed as a Short Term Rental, the Bloom Arena and Rodeo Arena usage is unique enough I believe it warrants its own subsection within the narrative. The most common use of both of the arena is an equestrian event. However the two arenas have been used to hold a variety of events such as: circuses, surplus sales, livestock shows, spectator sports, and dog agility. The two arenas also have separate rate structures. Within the rate structure are defined fees for commercial activities vs. non-commercial activities.

Bloom Arena is rented by the hour, ½ Day, or Full day. The Rodeo Arena is rented either as ½ Day or Full day rental.

Bloom Arena hourly rentals need to be booked by the Friday of the preceding week. The reason that we have a week booking window is so that we may also honor our Haul-In Pass users.

Horse Stabling (Long Term Rentals)

KVEC offers horse stabling for Kittitas County. When users rent a stable, they receive a stable per horse as well as one tack room per rental. The Event Center provides the first round of bedding. A Horse Stabling rental also includes a Haul-in Pass. Stablers using a Haul In Pass are subject to the same rules and regulations of other Haul-in Pass users. The Event Center collects two deposits from each renter: a \$50.00 Damage/Cleaning deposit as well as a \$20.00 Key deposit. Upon a satisfactory inspection of the stable, and the set of keys returned – the refundable deposit is processed and handled as any other payable through our accounting department.

Stabling for the 2012 will be proposed to be increased from \$150 a month to \$200 a month (plus the additional \$50 for a Haul in Pass). In addition we are going to sell pre-packaged bedding at \$5.00 a bail. This will help offset the cost of bedding and help decreased waste bedding as well.

County Meetings/Trainings/Etc... (Complimentary Meetings)

The Event Center provides a great deal of meeting space to a number of County departments at no charge. These departments include but are not limited to: KCSO, Public Health, HR, CDS, Public Works and the Board of County Commissioners. The setup for the rooms vary from meeting to meeting. This is unreciprocated as the Event Center still pays other county departments for maintenance labor, KCSO labor, Public Health training, Solid Waste dumping, as well as other fees within the county.

Misc Revenues

Misc Revenue includes any revenue that does not fall in the above categories. Food concessions, extra labor billed to an event, or equipment rental falls in this area. The budgeted line item for this is only \$500.00

Entrance Fees

New to the 2012 budget is a new revenue generator in the form of "Entrance Fees". The plan is to introduce a haunted house attraction at the Fairgrounds. While still in design phases, the current proposal would be to partner with local groups to help staff the event. The Event Center would provide the location and materials, while local groups and volunteers would provide the performers and operations crew to hold the staff the event. The revenue would be shared between the Event Center and our staffing partners. In addition, sponsors would be sought to help cover the expenses of the event. As this would be first year of the attraction – there are startup costs associated with it. Those costs are attached as Appendix B. The attraction would run during the weekends in October leading up to and concluding on Halloween.

Grant Funding

Hotel Motel Lodging Tax Grant -- \$100,000 (pending approval)

City Hotel/Motel Lodging Tax Grant - \$5,000

For 2012, We will be applying for funding listed above as well as \$15,000 from the WSDA Agriculture Safety Grants.

Staff Services

The staff at the Event Center serves the County directly and indirectly in other ways, not directly tied to the Event Center.

The Facilities Director is a member of the City of Ellensburg Lodging Tax Advisory Board. This Board shapes the way city lodging tax is spent and has a direct impact on the amount of tourism dollars spent promoting Ellensburg and the rental facilities Ellensburg has to offer.

The Facilities Director is a member of the Policy Committee, IIE Steering Committee, Safety Committee, and Security Committee and actively participates in the County's Management Team.

Personnel Change Request

The Bookkeeper position has been altered to Office Manager. This will be a share position once Fair, Co-Op Extension, and Noxious Weed combine. The Fair will be responsible for 50% of that salary.

5% of Bob Bishop's wage will be billed to Maintenance to cover the landscaping responsibilities that Bob completes during the Spring/Summer months.

One of our Program Support Technician positions will be moving over to the Courthouse Maintenance Department during the 4th quarter of 2011. This will result in a vacancy, that at this time I do not anticipate filling. It would result in approximately a \$14,000

savings in 2012. I do not wish to remove the position off of my personnel chart as there may be a time in 2013 that we would wish to reintroduce that position based on the work flow.

Building Remodeling Request

Whist not a full building remodel, the roof of the Buckaroo section of the Rodeo Arena is in need of some repairs. The sheathing on the roof has been warped by ice/snow and has created a situation where the northern wall is exposed to moisture. Working with the Rodeo Board President Kelly Schadman, who is also a general contractor we believe the cost of the repair is around \$8,500.

Asset Request

With the addition of the Armory into the meeting room inventory, we will need adequate tables and chairs to be able to provide proper seating arrangements for that room. An asset request is attached for those chairs and tables.

See Attached

Computers for General Fund

No new computers are needed at this time.

Other Projects/Needs:

109153105 PAINT & PAINTING SUPPLIES

The Event Center has applied for grant funding to provide new paint and sealer for the seats and wooden floor boards in the Rodeo Arena. The estimate for the paint/sealcoat is \$4,000 with \$2,000 being funded by the grant and the remaining \$2,000 funded by the county in matching funds. The painting will be completed by KVEC staff and trustees.

109153569 MINOR MISCELLANEOUS EQUIPMENT

109154101 PROFESSIONAL SERVICES

Increase of \$15,000 for engineering services to address TMDL requirements for Wilson Creek – see below.

109154802 IMPROVEMENTS REPAIR & MAINTENANCE

The Department of Ecology has issued new TMDL requirements for Wilson Creek. Wilson Creek flows right through the Kittitas County Fairgrounds. Fecal matter form

horses and other livestock have been making their way into Wilson Creek on the south side of the barns.

Working with the City of Ellensburg, storm water manager, a preliminary plan has been discussed to reduce the amount of fecal coliform that is entering the creek.

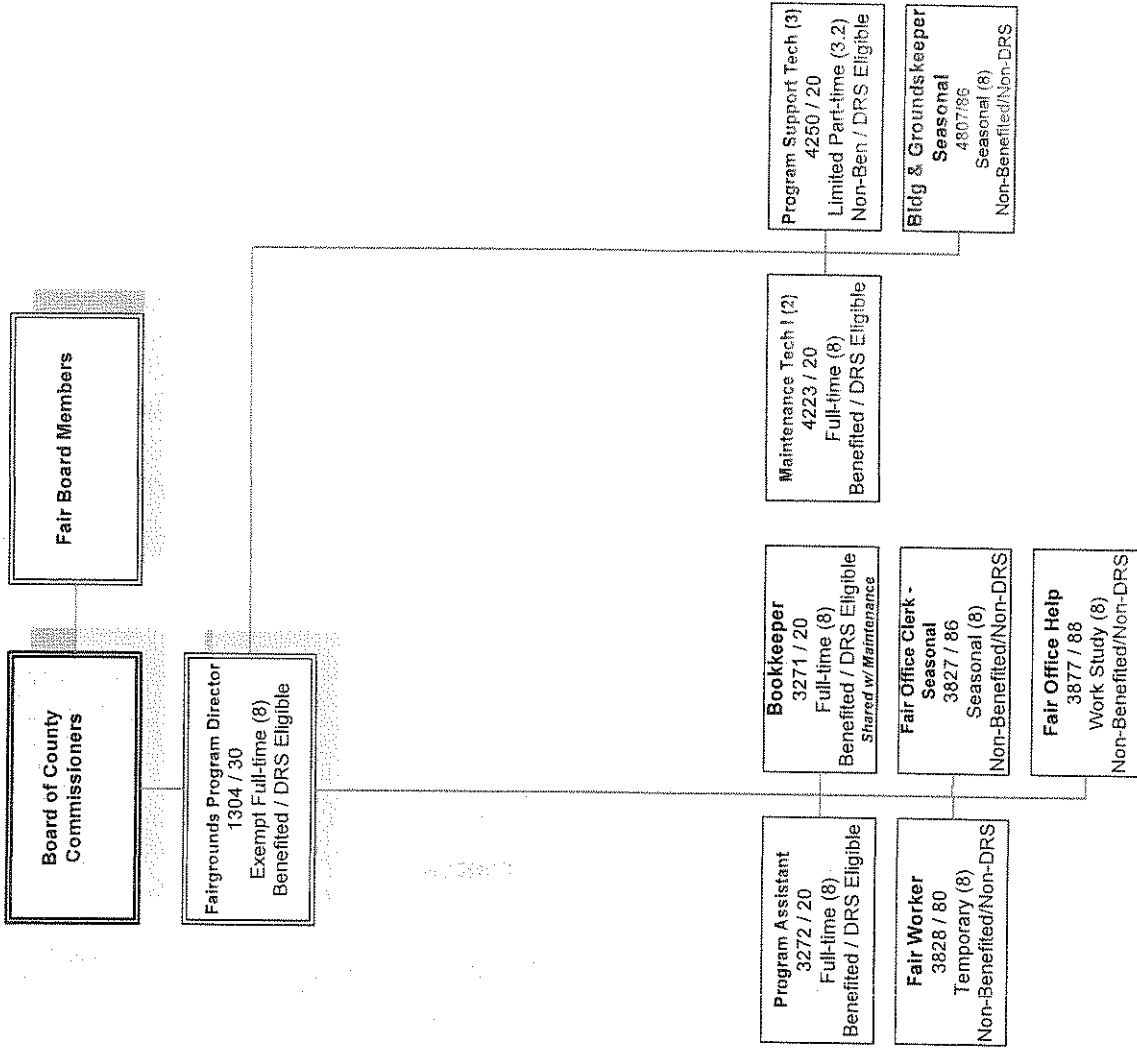
The project is going to require engineering as well as improvements to our existing catch basin system to adequately address the addition of material into Wilson Creek.

An estimate of \$15,000 has been included for the engineering work. This would provide the analysis of the area as well as help prepare the construction documents to provide an accurate estimate for work. At this time I am including an estimate of \$50,000 but that number is subject to change based on the engineering results.

\$15,000 has been added as an increase to Professional Services – budget code 10915401

\$50,000 has been added to Improvements Repair and Maintenance – budget code 109154802

0105 - Fairgrounds Office Organizational Chart



Updated 7/22/08

GL787

JMP - PREL MANAGE REPORT REV

Report Format

562

January 1, 2011 through December 31, 2011

Transaction status 1
Rounding to Whole Dollars

Fnd 001 GENERAL FUND

	2010 ACTUAL	2011 BUDGET	2011 AMENDE ACTUAL	2012 DEPT 2012 PRELIM2012 ADJUST 2012 ADDL 2012 PRELIM 2012 PRELIM %	ADDITIONAL REDUCTION	REDUCTION	BUDGET	
Dpt 0109								
SAC 33602	41,672-	41,000-	41,937-	41,000-			41,000-	
SAC 33710	1,500-			15,000-			15,000-	100.0
SAC 34170	2,487-	2,500-	1,446-	2,000-			2,000-	25.0-
SAC 34740	150,338-	154,000-	162,668-	157,000-	9,000-		166,000-	7.2
SAC 34790	1,853-	6,000-	4,038-	4,000-			4,000-	50.0-
SAC 34919	420-		365-					
SAC 36140	331-		32	200-			200-	100.0
SAC 36230	46,740-	51,000-	47,896-	54,000-			54,000-	5.6
SAC 36240	140,375-	135,000-	117,866-	149,000-			149,000-	9.4
SAC 36250	2,855-	3,000-	1,670-	4,000-			4,000-	25.0
SAC 36260			1,795					
SAC 36280	123,319-	120,750-	123,167-	123,000-			123,000-	1.8
SAC 36700	10,979-		13,396-	13,000-			13,000-	100.0
SAC 36981	27		103					
SAC 36990	19,294-	18,000-	13,398-	18,000-			18,000-	
SAC 39773	104,600-	100,000-	72,750-	100,000-			100,000-	
Dpt 0109	646,736-	631,250-	598,669-	680,200-	9,000-		689,200-	8.4
Fnd 001	19,591,922-	19,570,274-	15,165,204-	18,054,504-	400,216-		18,454,720-	6.0-
Report Final Totals	19,591,922-	19,570,274-	15,165,204-	18,054,504-	400,216-		18,454,720-	6.0-

GL787

JMP - PRELIMINARY DEPT REVENUE

Report Format 562

January 1, 2011 through December 31, 2011

Transaction status 1
Rounding to Whole Dollars

2010 PRELIM2012 ADJUST 2012 ADDL 2012 PRELIM %
ADDITIONAL REDUCTION REDUCTION BUDGET

Fnd 001	2010 ACTUAL	2011 AMENDE BUDGET	2011 ACTUAL	2012 DEPT BUDGET	2012 ADDL REDUCTION	2012 PRELIM % BUDGET
Sub 001 GENERAL FUND						
Dpt 0109 COUNTY FAIR						
BAC 336 STATE ENTITLEMENTS						
1 109233602110 PARA MUTUEL	41,672-	41,000-	41,937-	41,000-		41,000-
BAC 336 STATE ENTITLEMENTS	41,672-	41,000-	41,937-	41,000-		41,000-
BAC 337 INTERLOCAL GRANTS, L&J GRANT	1,500-			15,000-		100.0
1 109133710	1,500-			15,000-		100.0
BAC 337 INTERLOCAL GRANTS,	1,500-			15,000-		100.0
BAC 341 GENERAL GOVERNMENT						
1 109234170010 SALES OF MERCH	2,487-	2,500-	1,446-	2,000-		25.0-
BAC 341 GENERAL GOVERNMENT	2,487-	2,500-	1,446-	2,000-		25.0-
BAC 347 CULTURE AND RECREA						
1 109134740010 ENTRANCE FEES	116,338-	120,000-	128,668-	123,000-	9,000-	100.0
1 109234740010 ENTRANCE FEES	34,000-	34,000-	34,000-	34,000-		2.4
1 109234740020 RODEO TICKETS	1,853-	6,000-	4,038-	4,000-		50.0-
1 109234790010 BEDDING FEES	152,191-	160,000-	166,706-	161,000-	9,000-	5.9
BAC 347 CULTURE AND RECREA	152,191-	160,000-	166,706-	161,000-	9,000-	5.9
BAC 349 OTHER INTERFUND CH						
1 109134919010 OTHER INTERFUN	420-		365-			
BAC 349 OTHER INTERFUND CH	420-		365-			
BAC 361 INTEREST EARNINGS						
1 109136140 LATE FEES	252-		93-	200-		100.0
1 109236140 INTEREST ON CO	79-		79-			
1 109636140 LATE FEES			45-			
BAC 361 INTEREST EARNINGS	331-		32-	200-		100.0
BAC 362 RENT, LEASES AND C						
1 109136230 PARKING FEES	17,995-	21,000-	15,921-	18,000-		16.7-
1 109136250 LONG TERM RENT	2,855-	3,000-	1,670-	4,000-		25.0
1 109136280 FOOD CONCESSIO	690-	750-	330-			
1 109236230 PARKING FEES	28,745-	30,000-	31,975-	36,000-		16.7

GL787

JMP - PRELIMINARY DEPT REVENUE

Report Format 562

January 1, 2011 through December 31, 2011

Transaction status 1
Rounding to Whole Dollars

2010 ACTUAL 2011 AMENDE BUDGET 2011 ACTUAL 2012 DEPT 2012 PRELIM2012 ADJUST 2012 ADDL 2012 PRELIM %
ADDITIONAL REDUCTION REDUCTION REDUCTION BUDGET

Fnd 001	GENERAL FUND	2010 ACTUAL	2011 AMENDE BUDGET	2011 ACTUAL	2012 DEPT	2012 PRELIM2012 ADJUST	2012 ADDL	2012 PRELIM %
Sub 001	GENERAL FUND							
Dpt 0109	COUNTY FAIR							
BAC 362	RENT, LEASES AND C							
1 109236240	COMMERCIAL REN	28,826-	25,000-	27,324-	29,000-			13.8
1 109236280	FOOD CONCESSIO	62,764-	59,000-	58,440-	59,000-			59,000-
1 109636260	HOUSING RENTAL			1,795				
1 109136240010	SHORT TERM FAC	111,549-	110,000-	88,073-	120,000-			8.3
1 109236280010	CARNIVAL PROCE	59,866-	61,000-	64,387-	64,000-			64,000-
BAC 362	RENT, LEASES AND C	313,289-	309,750-	286,326-	330,000-			330,000-
BAC 367	CONTRIBUTIONS/DONA							
1 109236700	CONTRIB. & DON	82-		64-	2,000-			2,000-
1 1091036700	DONATIONS	10,897-		13,333-	11,000-			11,000-
BAC 367	CONTRIBUTIONS/DONA	10,979-		13,396-	13,000-			13,000-
BAC 369	OTHER MISCELLANEOU							
1 109136981	OVER/SHORT			7-				
1 109136990	MISCELLANEOUS	896-	500-	429	500-			500-
1 109236981	OVER/SHORT	27		110				
1 109236990	MISCELLANEOUS	668-		587-				
1 109136990060	NSF RECOVERY F	10-						
1 109236990050	SPONSORSHIPS	17,600-	17,500-	13,250-	17,500-			17,500-
1 109236990060	NSF CHECK SERV	120-		70				
BAC 369	OTHER MISCELLANEOU	19,267-	18,000-	13,235-	18,000-			18,000-
BAC 397	OPERATING TRANSFER							
1 109139773	OPERATING TRAN	100,000-	100,000-	72,750-	100,000-			100,000-
1 109239773	OPERATING TRAN	4,600-						
BAC 397	OPERATING TRANSFER	104,600-	100,000-	72,750-	100,000-			100,000-
Dpt 0109	COUNTY FAIR	646,736-	631,250-	596,130-	680,200-	9,000-		689,200-
Report Final Totals		646,736-	631,250-	596,130-	680,200-	9,000-		689,200-

JMP - PREL MANAGE REPORT EXP

January 1, 2011 through December 31, 2011

Transaction status 1
Rounding to Whole Dollars

Dpt 0109 Sob 1001 Sob 1002 Sob 1003 Sob 1015 Sob 1017 Sob 1019 Sob 2001 Sob 2002 Sob 2003 Sob 2004 Sob 2005 Sob 2006 Sob 3101 Sob 3104 Sob 3105 Sob 3118 Sob 3120 Sob 3125 Sob 3133 Sob 3201 Sob 3407 Sob 3501 Sob 3561 Sob 3564 Sob 3569 Sob 4101 Sob 4109 Sob 4111 Sob 4112 Sob 4122 Sob 4201 Sob 4202 Sob 4204 Sob 4301 Sob 4401 Sob 4404 Sob 4501 Sob 4504 Sob 4601 Sob 4604 Sob 4607	GENERAL FUND	2010 ACTUAL	2011 AMENDE BUDGET	2011 ACTUAL	2012 DEPT BUDGET	2012 PRELIM2012 ADJUST ADDITIONAL REDUCTION	2012 ADDL REDUCTION	2012 PRELIM % BUDGET	Transaction status 1 Rounding to Whole Dollars
	COUNTY FAIR								
	SALARIES	197,843	200,188	155,686	221,970		221,970	9.8	
	OVERTIME	31,774	30,000	15,202	26,000		26,000	15.4	
	EXTRA HELP	48,809	49,000	51,843	51,000		51,000	3.9	
	CALL BACK PAID	1,315		448					
	CELL PHONE STIPEND	1,100	300	225	300		300		
	BOARD MEMBER PAY	12,870	12,870		12,870		12,870		
	FICA/MEDICARE	22,826	22,784	16,980	24,092		24,092	5.4	
	MEDICAL AID/LABOR INDU	9,112	12,505	9,199	14,481		14,481	13.7	
	RETIREMENT	11,443	16,658	9,673	20,546		20,546	18.9	
	MEDICAL BENEFITS	36,835	35,666	27,503	37,800		37,800	5.7	
	UNIFORM CLOTHING	544	500	900					
	UNEMPLOYMENT	1,820	1,272	978	2,081		2,081	38.9	
	OFFICE SUPPLIES	2,980	2,800	868	1,620		1,620	72.8	
	FOOD	2,148	3,000	639	2,350		2,350	27.7	
	PAINT & PAINTING SUPPL	2,823	5,250	2,131	5,250		5,250		
	OPERATING SUPPLIES	62,262	54,750	57,426	58,750		58,750	6.8	
	PRIZES & AWARDS	8,090	6,000	8,537	7,500		7,500	20.0	
	RESTROOM SUPPLIES	4,622	5,000	3,126	4,500		4,500	11.1	
	DIRECTOR OPERATING SUP	475	1,500	707	800		800	87.5	
	FAIR PREMIUMS	27,365	28,000		28,000		28,000		
	FUEL	9,935	8,000	10,639	7,250		7,250	10.3	
	PURCHASE FOR RESALE	3,706	2,000	1,664	1,500		1,500	33.3	
	SMALL TOOLS	111	200	109	200		200		
	MINOR OFFICE EQUIPMENT		2,500			7,000	7,000	64.3	
	MINOR COMPUTER SOFTWARE	137-							
	MINOR MISCELLANEOUS EQ	4,140	1,750	1,032					
	PROFESSIONAL SERVICES	44,042	44,000	36,287	59,000		59,000	25.4	
	PENALTIES & ASSESSMENT	61							
	ENTERTAINMENT SERVICES	65,703	70,000	73,742	70,000		70,000		
	BANKING FEES	940	800	1,032	775		775	3.2	
	PASS THRU CONTRACTED S	3,500	3,500	3,500	3,500		3,500		
	TELEPHONE	3,296	3,500	2,940	3,500		3,500		
	POSTAGE	954	1,200	1,020	1,100		1,100	9.1	
	CELLULAR PHONE COMMUNI	1,108	750	339	750		750		
	TRAVEL	854			1,000		1,000	100.0	
	ADVERTISING	857	1,250	585	1,100		1,100	13.6	
	PROMOTIONAL ADVERTISIN	16,284	23,000	19,136	20,500		20,500	12.2	
	OPERATING RENTAL/LEASE	27,351	31,200	33,032	30,350		30,350	2.8	
	OFFICE EQUIPMENT LEASE	2,823	300	2,295	1,350		1,350	77.8	
	INSURANCE		21,000		10,000		10,000	110.0	
	LIABILITY INSURANCE	4,042	5,000		5,000		5,000		
	BUILDING INSURANCE	9,208			10,000		10,000	100.0	

January 1, 2011 through December 31, 2011

Transaction status 1
Rounding to Whole Dollars

Fnd 001 GENERAL FUND

	2010 ACTUAL	2011 AMENDE BUDGET	2011 ACTUAL	2012 DEPT BUDGET	2012 PRELIM ADDITIONAL REDUCTION	2012 ADDL REDUCTION	2012 PRELIM BUDGET	%
Dpt 0109								
Sob 4608	4,269	6,500	9,990	6,500			6,500	
Sob 4701	120,093	90,000	90,990	110,000			110,000	18.2
Sob 4702	7,955	8,700	9,948	8,700			8,700	
Sob 4801	515	2,750	1,457	11,800			11,800	76.7
Sob 4802	4,634	12,000	3,331	59,500			59,500	79.8
Sob 4803	3,528	5,000	8,907	3,900			3,900	28.2
Sob 4805	3,009	2,000	385	2,000			2,000	
Sob 4809	647	1,500	299					
Sob 4902	1,561	1,290	1,396	1,500			1,500	14.0
Sob 4905	2,307	3,000	2,527	2,750			2,750	9.1
Sob 4906	1,466	750		1,900			1,900	60.5
Sob 4909	1,568	2,000	11,004	8,000			8,000	75.0
Sob 5102	35	50	351	325			325	84.6
Sob 5301	5,738	1,000	6,141	5,700			5,700	100.0
Sob 6408	1,080			1,000			1,000	
Sob 7501	1,169	2,725						
Sob 9101	20,814							
Sob 9201	49	500	18	25			25	1,900.0
Dpt 0109	862,271	847,758	686,162	970,385	7,000		977,385	13.3
Fnd 001	18,902,042	19,837,962	13,670,030	21,139,426	791,317		21,930,744	9.5
Report Final Totals	18,902,042	19,837,962	13,670,030	21,139,426	791,317		21,930,744	9.5

January 1,2011 through December 31,2011

Transaction status 1
Rounding to Whole Dollars

Div	GENERAL FUND	Dpt 0109	COUNTY FAIR	2010		2011		2012		ADDITIONAL REDUCTION	REDUCTION	BUDGET	PRELIM %
				ACTUAL	BUDGET	ACTUAL	BUDGET	DEPT	ADJUST				
001	KITTITAS COUNTY EVENT C												
Sob 1001	SALARIES	197,843	200,188	155,686	221,970	221,970	221,970	221,970	221,970	221,970	221,970	9.8	
Sob 1002	OVERTIME	31,774	30,000	15,202	26,000	26,000	26,000	26,000	26,000	26,000	26,000	15.4-	
Sob 1015	CALL BACK PAID	1,315		448									
Sob 1017	CELL PHONE STIPEND	100	300	225	300	300	300	300	300	300	300		
Sob 2001	FICA/MEDICARE	17,574	17,631	13,013	18,992	18,992	18,992	18,992	18,992	18,992	18,992	7.2	
Sob 2002	MEDICAL AID/LABOR INDU	6,224	7,405	6,184	9,381	9,381	9,381	9,381	9,381	9,381	9,381	21.1	
Sob 2003	RETIREMENT	11,443	16,658	9,673	20,546	20,546	20,546	20,546	20,546	20,546	20,546	18.9	
Sob 2004	MEDICAL BENEFITS	36,835	35,666	27,503	37,800	37,800	37,800	37,800	37,800	37,800	37,800	5.7	
Sob 2006	UNEMPLOYMENT	1,451	1,003	752	1,581	1,581	1,581	1,581	1,581	1,581	1,581	36.6	
Sob 3101	OFFICE SUPPLIES	434	800	197	720	720	720	720	720	720	720	11.1-	
Sob 3105	PAINT & PAINTING SUPPL	274	2,000	620	1,350	1,350	1,350	1,350	1,350	1,350	1,350	48.2-	
Sob 3115	OPERATING SUPPLIES	36,372	34,000	21,523	30,000	30,000	30,000	30,000	30,000	30,000	30,000	13.3-	
Sob 3201	FUEL	7,889	6,000	8,073	5,500	5,500	5,500	5,500	5,500	5,500	5,500	9.1-	
Sob 3501	SMALL TOOLS	111	200	109	200	200	200	200	200	200	200		
Sob 3561	MINOR OFFICE EQUIPMENT		2,500		7,000	7,000	7,000	7,000	7,000	7,000	7,000	64.3	
Sob 3564	MINOR COMPUTER SOFTWARE	137-											
Sob 3569	MINOR MISCELLANEOUS EQ	4,113	1,750	1,032	20,000	20,000	20,000	20,000	20,000	20,000	20,000	70.0	
Sob 4101	PROFESSIONAL SERVICES	5,241	6,000	6,913									
Sob 4109	PENALTIES & ASSESSMENT	61											
Sob 4112	BANKING FEES	466	300	291	275	275	275	275	275	275	275	9.1-	
Sob 4201	TELEPHONE	3,040	3,000	2,589	3,000	3,000	3,000	3,000	3,000	3,000	3,000		
Sob 4202	POSTAGE	254	500	320	500	500	500	500	500	500	500		
Sob 4204	CELLULAR PHONE COMMUNI	1,108	750	339	750	750	750	750	750	750	750		
Sob 4401	ADVERTISING	421	500	449	500	500	500	500	500	500	500		
Sob 4404	PROMOTIONAL ADVERTISIN	4,456	5,000	5,462	5,500	5,500	5,500	5,500	5,500	5,500	5,500	9.1	
Sob 4501	OPERATING RENTAL/LEASE	1,286	1,000	699	1,350	1,350	1,350	1,350	1,350	1,350	1,350	25.9	
Sob 4504	OFFICE EQUIPMENT LEASE	2,823	300	2,295	1,350	1,350	1,350	1,350	1,350	1,350	1,350	77.8	
Sob 4501	INSURANCE		11,000										
Sob 4604	LIABILITY INSURANCE	4,042	5,000		5,000	5,000	5,000	5,000	5,000	5,000	5,000		
Sob 4607	BUILDING INSURANCE	9,208			10,000	10,000	10,000	10,000	10,000	10,000	10,000	100.0	
Sob 4608	VEHICLE INSURANCE	4,269	6,500		6,500	6,500	6,500	6,500	6,500	6,500	6,500		
Sob 4701	UTILITIES	119,706	90,000	90,990	110,000	110,000	110,000	110,000	110,000	110,000	110,000	18.2	
Sob 4702	WASTE DISPOSAL	3,030	3,700	2,810	3,700	3,700	3,700	3,700	3,700	3,700	3,700		
Sob 4801	BUILDING REPAIRS & MAI	515	2,000	1,457	1,800	1,800	1,800	1,800	1,800	1,800	1,800	11.1-	
Sob 4802	IMPROVEMENTS REPAIR &		7,000	2,324	55,000	55,000	55,000	55,000	55,000	55,000	55,000	87.3	
Sob 4803	EQUIPMENT REPAIRS & MA	2,671	3,000	7,291	3,000	3,000	3,000	3,000	3,000	3,000	3,000		
Sob 4805	VEHICLE MAINTENANCE	3,009	2,000	385	2,000	2,000	2,000	2,000	2,000	2,000	2,000		
Sob 4809	COMPUTER SOFTWARE MAIN	548											
Sob 4902	DUES & SUBSCRIPTIONS	349	500	412	500	500	500	500	500	500	500		
Sob 4905	PRINTING & BINDING		500										
Sob 5102	INTERGOVT LICENSES & P	10		351	300	300	300	300	300	300	300	100.0	

GL787

JMP - PREL MANAGE REPORT EXP

Report Format 562

January 1, 2011 through December 31, 2011

Transaction status 1
Rounding to Whole Dollars

Fnd 001	GENERAL FUND	Dpt 0109	COUNTY FAIR	2010 ACTUAL	2011 BUDGET	2011 ACTUAL	2012 DEPT ADDITIONAL REDUCTION	2012 ADDL REDUCTION	2012 PRELIM % BUDGET
Div 001	KITTITAS COUNTY EVENT C								
Sob 5301	INTERGOVT TAXES & OPER	200					200		100.0
Sob 6408	VEHICLES	1,080	194	1,000	1,000		1,000		
Sob 7501	CAPITAL LEASES - PRINC	169		2,725					
Sob 9101	INTERFUND PROFESSIONAL	20,699							
Sob 9201	INTERFUND TELEPHONE	49	18	500	25				25 1,900.0-
Div 001	KITTITAS COUNTY EVENT C	542,327	385,830	508,876	606,590	7,000	613,590		17.1

GL787

JMP - PREL MANAGE REPORT EXP

Report Format 562

January 1,2011 through December 31,2011

Transaction status 1
Rounding to Whole Dollars

Div	Fnd	GENERAL FUND	Dpt	COUNTY FAIR		2012 DEPT	2012 PRELIM2012 ADJUST	2012 ADDL	2012 PRELIM %	
				0109	2011					ADDITIONAL
			ACTUAL	BUDGET	ACTUAL					
Div 002		COUNTY FAIR/LABOR DAY W								
Sob 1003		EXTRA HELP	48,809	49,000	51,843	51,000			51,000	3.9
Sob 1019		BOARD MEMBER PAY	12,870	12,870		12,870			12,870	
Sob 2001		FICA/MEDICARE	5,252	5,153	3,967	5,100			5,100	1.0-
Sob 2002		MEDICAL AID/LABOR INDU	2,888	5,100	3,015	5,100			5,100	
Sob 2005		UNIFORM CLOTHING	544	500	900					
Sob 2006		UNEMPLOYMENT	369	269	226	500			500	46.2
Sob 3101		OFFICE SUPPLIES	546	2,000	670	900			900	122.2-
Sob 3104		FOOD	2,148	3,000	639	2,350			2,350	27.7-
Sob 3105		PAINT & PAINTING SUPPL	2,182	2,500	258	900			900	177.8-
Sob 3115		OPERATING SUPPLIES	16,531	20,000	23,103	18,000			18,000	11.1-
Sob 3118		PRIZES & AWARDS	8,090	6,000	8,537	7,500			7,500	20.0
Sob 3120		RESTROOM SUPPLIES	4,622	5,000	3,126	4,500			4,500	11.1-
Sob 3125		DIRECTOR OPERATING SUP	475	1,500	707	800			800	87.5-
Sob 3133		FAIR PREMIUMS	27,365	28,000		28,000			28,000	
Sob 3201		FUEL	2,046	2,000	2,566	1,750			1,750	14.3-
Sob 3407		PURCHASE FOR RESALE	3,706	2,000	1,664	1,500			1,500	33.3-
Sob 4101		PROFESSIONAL SERVICES	38,801	38,000	29,373	39,000			39,000	2.6
Sob 4111		ENTERTAINMENT SERVICES	65,703	70,000	73,742	70,000			70,000	
Sob 4112		BANKING FEES	474	500	741	500			500	
Sob 4122		PASS THRU CONTRACTED S	3,500	3,500	3,500	3,500			3,500	
Sob 4201		TELEPHONE	256	500	351	500			500	
Sob 4202		POSTAGE	700	700	700	600			600	16.7-
Sob 4301		TRAVEL	854		12-	1,000			1,000	100.0
Sob 4401		ADVERTISING	436	750	136	600			600	25.0-
Sob 4404		PROMOTIONAL ADVERTISIN	11,827	18,000	13,673	15,000			15,000	20.0-
Sob 4501		OPERATING RENTAL/LEASE	26,065	30,200	32,333	29,000			29,000	4.1-
Sob 4601		INSURANCE		10,000		10,000			10,000	
Sob 4701		UTILITIES	387							
Sob 4702		WASTE DISPOSAL	4,925	5,000	7,138	5,000			5,000	
Sob 4802		IMPROVEMENTS REPAIR &	4,634	5,000	700	4,500			4,500	11.1-
Sob 4803		EQUIPMENT REPAIRS & MA	856	2,000	1,615	900			900	122.2-
Sob 4809		COMPUTER SOFTWARE MAIN	99	1,500	299					
Sob 4902		DUES & SUBSCRIPTIONS	1,212	790	984	1,000			1,000	21.0
Sob 4905		PRINTING & BINDING	2,307	2,500	2,527	2,750			2,750	9.1
Sob 4906		REGISTRATION/TRAINING	1,466	750		1,900			1,900	60.5
Sob 4909		SPONSORSHIPS	1,568	2,000	11,004	8,000			8,000	75.0
Sob 5102		INTERGOVT LICENSES & P	25	50		25			25	100.0-
Sob 5301		INTERGOVT TAXES & OPER	5,537		5,947	5,500			5,500	100.0
Sob 9101		INTERFUND PROFESSIONAL	115							
Div 002		COUNTY FAIR/LABOR DAY W	310,192	336,632	285,973	340,045			340,045	1.0

GL787

JMP - PREL MANAGE REPORT EXP

Report Format 562

January 1,2011 through December 31,2011

Transaction status 1
Rounding to Whole Dollars

Fnd 001	GENERAL FUND	Dpt 0109	COUNTY FAIR	2010 ACTUAL	2011 BUDGET	2011 ACTUAL	2012 DEPT ADDITIONAL REDUCTION	2012 PRELIM2012 ADJUST ADDL 2012 PRELIM % ADDITIONAL REDUCTION	BUDGET	PRELIM %
Div 005	OUTSIDE ARENA (RODEO BO									
SOB 3105	PAINT & PAINTING SUPPL	367	750	1,056	3,000	3,000				75.0
SOB 3115	OPERATING SUPPLIES	341	750	436	750	750				750
SOB 4801	BUILDING REPAIRS & MAI		750		10,000	10,000				92.5
Div 005	OUTSIDE ARENA (RODEO BO	708	2,250	1,492	13,750	13,750				83.6

GL787

JMP - PREL MANAGE REPORT EXP

Report Format 562

January 1, 2011 through December 31, 2011

Transaction status 1
Rounding to Whole Dollars

Fnd 001	GENERAL FUND	Dpt 0109	COUNTY FAIR	2010 ACTUAL	2011 BUDGET	2011 AMENDE ACTUAL	2012 DEPT 2012 PRELIM2012 ADJUST 2012 ADDL 2012 PRELIM %	ADDITIONAL REDUCTION	REDUCTION	BUDGET
Div 010	FRONTIER VILLAGE									
SOB 3105	PAINT & PAINTING SUPPL					197				
SOB 3115	OPERATING SUPPLIES	9,018		12,364	10,000				10,000	100.0
SOB 3569	MINOR MISCELLANEOUS EQ	27								
SOB 4802	IMPROVEMENTS REPAIR &				307					
Div 010	FRONTIER VILLAGE	9,045		12,867	10,000				10,000	100.0
Dpt 0109	COUNTY FAIR	862,271	847,758	686,162	970,385	7,000			977,385	13.3

GL787

JMP - PRELIMINARY DEPT EXPENSE

Report Format 562

January 1, 2011 through December 31, 2011

Transaction status 1
Rounding to Whole Dollars

Fnd Dpt	GENERAL FUND COUNTY FAIR	Sub Div	GENERAL FUND KITITAS COUNTY EVENT CENTE	2010 ACTUAL	2011 BUDGET	2011 ACTUAL	2012 DEPT ADDL	2012 PRELIM ADDL	ADDITIONAL REDUCTION	REDUCTION	2012 PRELIM BUDGET	%
Obj 510	SALARIES AND WAGES			197,843	200,188	155,686	221,970				221,970	9.8
1 109151001	SALARIES			31,774	30,000	15,202	26,000				26,000	15.4-
1 109151002	OVERTIME			1,315		448						
1 109151015	CALL BACK PAID			100	300	225	300				300	
1 109151017	CELL PHONE STI											
Obj 510	SALARIES AND WAGES			231,032	230,488	171,562	248,270				248,270	7.2
Obj 520	PERSONNEL BENEFITS			17,574	17,631	13,013	18,992				18,992	7.2
1 109152001	FICA/MEDICARE			6,224	7,405	6,184	9,381				9,381	21.1
1 109152002	MEDICAL AID/LA			11,443	16,658	9,673	20,546				20,546	18.9
1 109152003	RETIREMENT			36,835	35,666	27,503	37,800				37,800	5.7
1 109152004	MEDICAL BENEFIT			1,451	1,003	752	1,581				1,581	36.6
1 109152006	UNEMPLOYMENT											
Obj 520	PERSONNEL BENEFITS			73,527	78,363	57,124	88,300				88,300	11.3
Obj 531	OFFICE AND OPERATING S			434	800	197	720				720	11.1-
1 109153101	OFFICE SUPPLIE			274	2,000	620	1,350				1,350	48.2-
1 109153105	PAINT & PAINTI			36,372	34,000	19,671	30,000				30,000	13.3-
1 109153115	OPERATING SUPP											
Obj 531	OFFICE AND OPERATING S			37,081	36,800	20,488	32,070				32,070	14.8-
Obj 532	FUEL			7,889	6,000	8,073	5,500				5,500	9.1-
1 109153201	FUEL											
Obj 532	FUEL			7,889	6,000	8,073	5,500				5,500	9.1-
Obj 535	SMALL TOOLS/MINOR EQUI			111	200	109	200				200	
1 109153501	SMALL TOOLS											
1 109153561	MINOR OFFICE E			137-	2,500		7,000				7,000	64.3
1 109153564	MINOR COMPUTER			4,113	1,750	1,032						
1 109153569	MINOR MISCELLA											
Obj 535	SMALL TOOLS/MINOR EQUI			4,087	4,450	1,141	200				7,000	38.2
Obj 541	PROFESSIONAL SERVICES			5,241	6,000	6,913	20,000				20,000	70.0
1 109154101	PROFESSIONAL S			61								
1 109154109	PENALTIES & AS			466	300	291	275				275	9.1-
1 109154112	BANK FEES											
Obj 541	PROFESSIONAL SERVICES			5,768	6,300	7,205	20,275				20,275	68.9

GL787

JMP - PRELIMINARY DEPT EXPENSE

Report Format 562

January 1, 2011 through December 31, 2011

Transaction status 1
Rounding to Whole Dollars

Fnd Dpt	GENERAL FUND COUNTY FAIR	Sub Div	2010 ACTUAL	2011 BUDGET	2011 ACTUAL	2012 DEPT ADDITIONAL REDUCTION	2012 ADDL REDUCTION	2012 PRELIM BUDGET	
								ADJUST	%
Obj 542	COMMUNICATIONS		4,402	4,250	3,220	4,250		4,250	
1 109154201	TELEPHONE		3,040	3,000	2,561	3,000		3,000	
1 109154202	POSTAGE		1,254	500	320	500		500	
1 109154204	CELLULAR PHONE		1,108	750	339	750		750	
Obj 542	COMMUNICATIONS		4,402	4,250	3,220	4,250		4,250	
Obj 544	ADVERTISING		4,456	5,000	4,449	500		500	
1 109154401	ADVERTISING		421	500	449	500		500	
1 109154404	PROMOTIONAL AD		4,035	4,500	3,999	500		500	
Obj 544	ADVERTISING		4,877	5,500	5,911	6,000		6,000	8.3
Obj 545	OPERATING RENTAL/LEASE		1,286	1,000	699	1,350		1,350	25.9
1 109154501	OPERATING RENT		1,286	1,000	699	1,350		1,350	77.8
1 109154504	OFFICE EQUIPME		2,823	300	2,295	1,350		1,350	
Obj 545	OPERATING RENTAL/LEASE		4,109	1,300	2,994	2,700		2,700	51.9
Obj 546	INSURANCE AND BONDS		17,519	22,500		21,500		21,500	4.7-
1 109154601	INSURANCE		11,000	11,000		5,000		5,000	
1 109154604	LIABILITY INSU		4,042	5,000		10,000		10,000	100.0
1 109154607	BUILDING INSUR		9,208	6,500		6,500		6,500	
1 109154608	VEHICLE INSURA		4,269	6,500		6,500		6,500	
Obj 546	INSURANCE AND BONDS		17,519	22,500		21,500		21,500	4.7-
Obj 547	UTILITIES		119,706	90,000	90,990	110,000		110,000	18.2
1 109154701	UTILITIES		3,030	3,700	2,810	3,700		3,700	
1 109154702	WASTE DISPOSAL		116,676	86,300	88,180	106,300		106,300	
Obj 547	UTILITIES		122,737	93,700	93,799	113,700		113,700	17.6
Obj 548	REPAIRS & MAINTENANCE		515	2,000	1,457	1,800		1,800	11.1-
1 109154801	BUILDING REPAI		515	2,000	1,457	1,800		1,800	87.3
1 109154802	IMPROVEMENTS R		2,671	3,000	7,291	3,000		3,000	
1 109154803	EQUIPMENT REPA		3,009	2,000	385	2,000		2,000	
1 109154805	VEHICLE MAINTA		548						
1 109154809	COMPUTER SOFTW		548						
Obj 548	REPAIRS & MAINTENANCE		6,743	14,000	11,457	61,800		61,800	77.4

January 1, 2011 through December 31, 2011

Transaction status 1
Rounding to Whole Dollars

Fnd 001	GENERAL FUND	Sub 001	GENERAL FUND	2010	2011	2012	ADDITIONAL	REDUCTION	REDUCTION	PRELIM	%
Dpt 0109	COUNTY FAIR	Div 001	KITITITAS COUNTY EVENT CENTE	ACTUAL	BUDGET	ACTUAL	REDUCTION	REDUCTION	BUDGET		
Obj 549	MISCELLANEOUS									500	
1 109154902	DUES & SUBSCRI	349	412	500	500						
1 109154905	PRINTING & BIN			500							
Obj 549	MISCELLANEOUS	349	412	1,000	500					500	100.0-
Obj 551	INTERGOVT PROFESSIONAL										
1 109155102	INTERGOVT LICE	10	351	300	300					300	100.0
Obj 551	INTERGOVT PROFESSIONAL	10	351	300	300					300	100.0
Obj 553	TAXES & OPERATING ASSE										
1 109155301	INTERGOVT TAXE	200	194	200	200					200	100.0
Obj 553	TAXES & OPERATING ASSE	200	194	200	200					200	100.0
Obj 564	EQUIPMENT										
1 109156408	VEHICLE	1,080	1,000	1,000	1,000					1,000	
Obj 564	EQUIPMENT	1,080	1,000	1,000	1,000					1,000	
Obj 575	CAPITAL LEASES/INSTALL										
1 109157501	CAPITAL LEASES	169	2,725	2,725							
Obj 575	CAPITAL LEASES/INSTALL	169	2,725	2,725							
Obj 591	INTERFUND PROFESSIONAL										
1 109159101	INTERFUND PROF	20,699									
Obj 591	INTERFUND PROFESSIONAL	20,699									
Obj 592	INTERFUND COMMUNICATIO										
1 109159201	INTERFUND TELE	49	18	25	25					25	1,900.0-
Obj 592	INTERFUND COMMUNICATIO	49	18	25	25					25	1,900.0-
Div 001	KITITITAS COUNTY EVENT C	542,327	383,950	606,590	7,000					613,590	17.1

GL787

JMP - PRELIMINARY DEPT EXPENSE

Report Format 562

January 1, 2011 through December 31, 2011

Transaction status 1
Rounding to Whole Dollars

Fnd Dpt	GENERAL FUND COUNTY FAIR	Sub Div	2010 ACTUAL	2011 AMENDE BUDGET	2011 ACTUAL	2012 DEPT ADDL	ADJUST ADDL	ADDITIONAL REDUCTION	REDUCTION	PRELIM BUDGET	%
001 0109	GENERAL FUND COUNTY FAIR	001 002				2012 DEPT	2012 DEPT	ADDITIONAL REDUCTION	REDUCTION	PRELIM BUDGET	%
Obj 510	SALARIES AND WAGES		48,809	49,000	51,843	51,000				51,000	3.9
1 109251003	EXTRA HELP		12,870	12,870		12,870				12,870	
1 109251019	BOARD MEMBER P										
Obj 510	SALARIES AND WAGES		61,679	61,870	51,843	63,870				63,870	3.1
Obj 520	PERSONNEL BENEFITS		5,252	5,153	3,967	5,100				5,100	1.0-
1 109252001	FICA/MEDICARE		2,888	5,100	3,015	5,100				5,100	
1 109252002	MEDICAL AID/LA		544	500	589						
1 109252005	UNIFORM CLOTHI		369	269	226	500				500	46.2
1 109252006	UNEMPLOYMENT										
Obj 520	PERSONNEL BENEFITS		9,053	11,022	7,796	10,700				10,700	3.0-
Obj 531	OFFICE AND OPERATING S		546	2,000	670	900				900	122.2-
1 109253101	OFFICE SUPPLIE		2,148	3,000	406	2,350				2,350	27.7-
1 109253104	FOOD		2,182	2,500	258	900				900	177.8-
1 109253105	PAINT & PAINTI		16,531	20,000	23,083	18,000				18,000	11.1-
1 109253115	OPERATING SUPP		8,090	6,000	8,537	7,500				7,500	20.0
1 109253118	PRIZES & AWARD		4,622	5,000	3,126	4,500				4,500	11.1-
1 109253120	RESTROOM SUPPL		4,475	1,500	707	800				800	87.5-
1 109253125	DIRECTOR OPERA		27,365	28,000		28,000				28,000	
1 109253133	FAIR PREMIUMS										
Obj 531	OFFICE AND OPERATING S		61,958	68,000	36,788	62,950				62,950	8.0-
Obj 532	FUEL		2,046	2,000	2,566	1,750				1,750	14.3-
1 109253201	FUEL										
Obj 532	FUEL		2,046	2,000	2,566	1,750				1,750	14.3-
Obj 534	ITEMS PURCHASE INVENTO		3,706	2,000	1,664	1,500				1,500	33.3-
1 109253407	PURCHASE FOR R										
Obj 534	ITEMS PURCHASE INVENTO		3,706	2,000	1,664	1,500				1,500	33.3-
Obj 541	PROFESSIONAL SERVICES		38,801	38,000	29,373	39,000				39,000	2.6
1 109254101	PROFESSIONAL S		65,703	70,000	73,742	70,000				70,000	
1 109254111	ENTERTAINMENT		474	500	741	500				500	
1 109254112	BANK FEES		3,500	3,500	3,500	3,500				3,500	
1 109254122	PASS THRU CONT										
Obj 541	PROFESSIONAL SERVICES		108,478	112,000	107,356	113,000				113,000	.9

GL787

JMP - PRELIMINARY DEPT EXPENSE

Report Format 562

January 1, 2011 through December 31, 2011

Transaction status 1
Rounding to Whole Dollars

Fnd Dpt	GENERAL FUND COUNTY FAIR	Sub Div	GENERAL FUND COUNTY FAIR/LABOR DAY WEEKE	2010 ACTUAL	2011 BUDGET	2011 ACTUAL	2012 DEPT	2012 ADDL	2012 PRELIM	ADJUST	ADDITIONAL	REDUCTION	REDUCTION	BUDGET	PRELIM %
Obj 542	COMMUNICATIONS	256	500	351	500	500								500	
1 109254201	TELEPHONE	700	700	700	600	600								600	16.7-
Obj 542	COMMUNICATIONS	956	1,200	1,051	1,100	1,100								1,100	9.1-
Obj 543	TRAVEL	854		12-	1,000									1,000	100.0
1 109254301	TRAVEL	854		12-	1,000									1,000	100.0
Obj 544	ADVERTISING	436	750	136	600	600								600	25.0-
1 109254401	ADVERTISING	11,827	18,000	13,198	15,000	15,000								15,000	20.0-
1 109254404	PROMOTIONAL AD	12,263	18,750	13,334	15,600	15,600								15,600	20.2-
Obj 545	OPERATING RENTAL/LEASE	26,065	30,200	32,333	29,000	29,000								29,000	4.1-
1 109254501	OPERATING RENT	26,065	30,200	32,333	29,000	29,000								29,000	4.1-
Obj 546	INSURANCE AND BONDS	10,000			10,000									10,000	
1 109254601	INSURANCE	10,000			10,000									10,000	
Obj 547	UTILITIES	387													
1 109254701	UTILITIES	4,925	5,000	830	5,000	5,000								5,000	
1 109254702	WASTE DISPOSAL	5,312	5,000	830	5,000	5,000								5,000	
Obj 548	REPAIRS & MAINTENANCE	4,634	5,000	700	4,500	4,500								4,500	11.1-
1 109254802	REPAIRS & MAINTENANCE	856	2,000	1,615	900	900								900	122.2-
1 109254803	IMPROVEMENTS R	99	1,500	299											
1 109254809	EQUIPMENT REPA	5,589	8,500	2,614	5,400	5,400								5,400	57.4-
Obj 548	REPAIRS & MAINTENANCE	1,212	790	984	1,000	1,000								1,000	21.0
Obj 549	MISCELLANEOUS	2,307	2,500	2,527	2,750	2,750								2,750	9.1
1 109254902	DUES & SUBSCRI														
1 109254905	PRINTING & BIN														

GL787

JMP - PRELIMINARY DEPT EXPENSE

Report Format 562

January 1,2011 through December 31,2011

Transaction status 1
Rounding to Whole Dollars

Fnd 001	GENERAL FUND	Sub 001	GENERAL FUND	2010	2011	2012 DEPT	2012 ADDL	2012 PRELIM
Dpt 0109	COUNTY FAIR	Div 002	COUNTY FAIR/LABOR DAY WEEKE	ACTUAL	BUDGET	ADJUST	REDUCTION	%
						ADDITIONAL	REDUCTION	BUDGET
Obj 549	MISCELLANEOUS							
1 109254906	REGISTRATION/T	1,466	750	1,900	1,900			1,900
1 109254909	SPONSORSHIPS	1,568	2,000	11,004	8,000			8,000
Obj 549	MISCELLANEOUS	6,552	6,040	14,516	13,650			13,650
Obj 551	INTERGOVT PROFESSIONAL	25	50			25		25
1 109255102	INTERGOVT LICE							100.0-
Obj 551	INTERGOVT PROFESSIONAL	25	50			25		25
Obj 553	TAXES & OPERATING ASSE							
1 109255301	TAXES & OPERAT	5,537		5,947	5,500			5,500
Obj 553	TAXES & OPERATING ASSE	5,537		5,947	5,500			5,500
Obj 591	INTERFUND PROFESSIONAL							
1 109259101	INTERFUND PROF	115						115
Obj 591	INTERFUND PROFESSIONAL	115						115
Div 002	COUNTY FAIR/LABOR DAY W	310,192	336,632	278,626	340,045			340,045

1.0

JMP - PRELIMINARY DEPT EXPENSE

Report Format 562

January 1, 2011 through December 31, 2011

Transaction status 1
Rounding to Whole Dollars

Fnd	Dpt	GENERAL FUND COUNTY FAIR	Sub 001 Div 005	GENERAL FUND OUTSIDE ARENA (RODEO BOARD)	2010 ACTUAL	2011 BUDGET	2011 ACTUAL	2012 DEPT ADDITIONAL REDUCTION	2012 ADDL REDUCTION	2012 PRELIM % BUDGET
Obj 531	1 109553105	OFFICE AND OPERATING S	367	750	367	750	1,056	3,000	3,000	75.0
	1 109553115	PAINT & PAINTI OPERATING SUPP	341	750	341	436	750	750	750	
Obj 531		OFFICE AND OPERATING S	708	1,500	708	1,492	3,750	3,750	3,750	60.0
Obj 548	1 109554801	REPAIRS & MAINTENANCE BUILDING REPAI		750			10,000	10,000	10,000	92.5
Obj 548		REPAIRS & MAINTENANCE		750			10,000	10,000	10,000	92.5
Div 005		OUTSIDE ARENA (RODEO BO	708	2,250	708	1,492	13,750	13,750	13,750	83.6

Fnd 001	Dpt 0109	GENERAL FUND COUNTY FAIR	Sub 001 Div 010	GENERAL FUND FRONTIER VILLAGE	2010 ACTUAL	2011 AMENDE BUDGET	2011 ACTUAL	2012 DEPT ADDITIONAL REDUCTION	2012 ADJL REDUCTION	2012 PRELIM BUDGET	%
Obj 531	1	OFFICE AND OPERATING S					197			10,000	100.0
		1 1091053105 PAINT AND PAIN			9,018	12,364					
		1 1091053115 OPERATING SUPP						10,000			
Obj 531		OFFICE AND OPERATING S			9,018	12,561		10,000		10,000	100.0
Obj 535	1	SMALL TOOLS/MINOR EQUI	27								
		1 1091053569 MINOR MISCELLA									
Obj 535		SMALL TOOLS/MINOR EQUI	27								
Obj 548		REPAIRS & MAINTENANCE									
		1 1091054802 IMPROVEMENTS R					307				
Obj 548		REPAIRS & MAINTENANCE									
Div 010		FRONTIER VILLAGE			9,045	12,867		10,000		10,000	100.0
Dpt 0109		COUNTY FAIR			862,271	847,758	676,935	970,385	7,000	977,385	13.3
Sub 001		GENERAL FUND			862,271	847,758	676,935	970,385	7,000	977,385	13.3
Fnd 001		GENERAL FUND			862,271	847,758	676,935	970,385	7,000	977,385	13.3
Report Final Totals											
					862,271	847,758	676,935	970,385	7,000	977,385	13.3

Please use one form for each request

Kittitas County
Asset Request
Budget Year 2012

Fund Department Fair

Budget Account Number 109156401

Amount \$ \$4,000

This form is to be used for any piece of furniture, office equipment, machinery, software or computers, etc that has a value that exceeds \$500.00. The amounts on this form justify the amounts indicated in your budget under the 535 minor 564 capital accounts.

Type of Equipment: 200 – Folding Chairs
New or Replacement: New

Justification for Request:

Once we start booking the Armory, post remodel, we will need to have an adequate supply of chairs and tables to maintain our current bookings, as well as the additional room demand the Armory will provide.

While we have enough supply to meet current demand, we would likely run short on chairs if we start to rent the Armory to groups over 100 people per booking, in addition to our other events that may occupy rooms at the same time.

Auditor's notes: 535 Minor
564 Capital

Please use one form for each request

**Kittitas County
Asset Request
Budget Year 2012**

Fund Department Fair

Budget Account Number 109156401

Amount \$ \$3,000

This form is to be used for any piece of furniture, office equipment, machinery, software or computers, etc that has a value that exceeds \$500.00. The amounts on this form justify the amounts indicated in your budget under the 535 minor 564 capital accounts.

Type of Equipment: 30 - 5' Round Tables
New or Replacement: New

Justification for Request:

Once we start booking the Armory, post remodel, we will need to have an adequate supply of chairs and tables to maintain our current bookings, as well as the additional room demand the Armory will provide.

As it stands now, we on occasion are not able to meet all of our requests for groups that want round tables.

Auditor's notes: 535 Minor
564 Capital

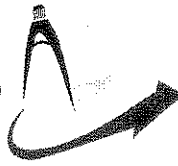
Ellensburg Rodeo Board's request for improvements from the
Kittitas Co. Budget for 2012

- 2 1. Lighting for the main entrances; - Western Village, south grandstands by up and over, slide gate by the arena secretaries shack and the 7th gate entrance.
2. Drywall repairs and painting for: (the worst) buckaroo section rooms,
Gold buckle building,
Western Village
3. Paint; Interior arena walls, lettering and the black railings, #
Finish painting the seat tops in section KK,
The gray paint on all the wood risers of the seating sections AA-KK
4. Repair the chain link fencing on the remaining track perimeter fencing.
5. The Plumbing in the Gold Buckle Building, toilets.
6. The electrical pedestal just east of the bucking chutes (by the water fountain)
needs of up grades.
7. Electrical Panel in the block building used for the Behind the Chutes. *Conduct up grade*
8. The roof of the buckaroo section needs repaired, it's causing the water damage to the ceilings and interior walls of the rooms. *Buckles Not holding*
9. Need to repair and replace some of the wood decking and risers of the wood seating sections AA-KK. *new 3
Boys
at buckaroo*

Estimate of \$ 20,000.00 to \$ 25,000.00

Submitted by Kelly Schademan, Ellensburg Rodeo Board V.P. 9-12-11

Kelly Schademan



Together with

Baima & Holmberg

**STORM DRAINAGE ANALYSIS AND DESIGN
FOR A PORTION OF
THE KITTITAS COUNTY FAIRGROUNDS**

SCOPE OF WORK

Civil Engineering Services:

- ▷ Research and site inspections
- ▷ Coordination and meetings with City of Ellensburg, Fairgrounds and Kittitas County Public Works.
- ▷ Prepare base map showing existing conditions and underground utilities
- ▷ Perform preliminary stormwater calculations according to City of Ellensburg design requirements.
- ▷ Provide 2-3 conceptual alternatives of stormwater treatment and estimated construction costs associated with each.
- ▷ Provide final design plans, calculations and details of alternative chosen.
- ▷ Assist in preparing bid documents for construction.
- ▷ Provide construction management and certification of improvements.

Estimated Cost: \$15,000

Schedule: 6 - 8 weeks to complete

Prepared by: Marc K. Kirkpatrick, CEO


<http://www.ecy.wa.gov>

Water Quality Improvement Projects (TMDLs) >
 Yakima Watershed Area Projects > Wilson and
 Cooke Creeks Fecal Coliform Project

Water Quality Improvement Project Wilson and Cooke Creeks: Fecal Coliform

Introduction

The Wilson Creek sub-basin is east of the Cascade Mountains in Kittitas County, Washington State. It drains most of the area surrounding the city of Ellensburg, as well as the agricultural lands and forests to the north and east of the city. The climate in the sub-basin area is semi-arid, with an average annual rainfall of 8.9 inches. The sub-basin covers approximately 244,500 acres (394 sq. miles) of land.

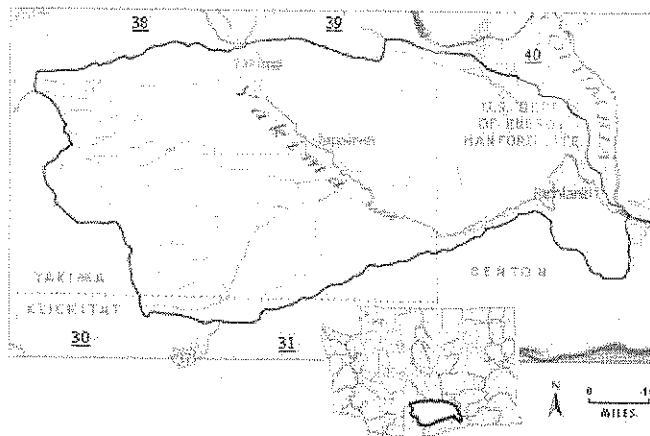
Land uses in the sub-basin vary from forestland, range, and intensively irrigated agriculture to urban and suburban areas. The sub-basin contains a network of supply canals, diversions, irrigation return drains, and numerous natural creeks, such as Cooke Creek. Water from the Yakima River is directed through the sub-basin by three large irrigation supply canals. The sub-basins' natural creeks are ultimately used as the conduits for irrigation return flows.

Water quality issues

Studies indicated that the downstream portion of various creeks in the Wilson Creek sub-basin violated Washington State water quality standards for fecal coliform bacteria. (See [Study Area map](#))

Why this matters

Fecal coliform is a type of "bacteria"



PROJECT INFO

Location:

WRIA:

#39 (Upper Yakima)

County:

Yakima

Water-body Name:

Cooke Creek

Wilson Creek

Parameter:

Fecal coliform bacteria

of TMDLs: 16

Status:

TMDL approved

Implementation plan submitted

Contact Info:

Greg Bohn

Phone: 509-454-4174

Email: Greg.Bohn@ecy.wa.gov

Central Region

Department of Ecology

15 West Yakima Ave, Ste 200

Yakima, WA 98902-3452

common in human and animal waste. It can make people sick and cause the closure of shellfish harvesting beds. Bacteria can get into our waters from untreated or partially treated discharges from wastewater treatment plants, from improperly functioning septic systems, and from livestock, pets and wildlife.

People can help keep bacteria out of the water. Keep livestock away from creeks and implement best management practices (BMPs) to prevent runoff from agricultural fields. Properly collect, bag, and trash dog poop. Check your on-site sewage system to make sure it is maintained and working properly.

Status of the project

Ecology, with the help of local groups, developed a total maximum daily load (TMDL) report. The report included results of water quality studies and monitoring; recommendations for helping the water quality to meet the state water quality standards; and an implementation strategy to determine how to accomplish the recommendations. Ecology sent the finalized TMDL to EPA for approval. EPA approved the document in July 2005.

The national pollution discharge elimination system (NPDES) permits issued to the city of Kittitas after September 30, 2006, had more stringent requirements for fecal coliform bacteria levels in the waste water than previously. The city also upgraded its municipal wastewater treatment plan. Concentrated animal feeding operations (CAFOs) are not allowed to discharge pollutants to the waters of the state except under extreme circumstances. A single load allocation was set for all non-point sources of fecal coliform pollution in the sub-basin. Human contribution of fecal coliform bacteria was expected to be reduced through implementing BMPs.

Technical information

Wilson Creek Sub-Basin Bacteria Total Maximum Daily Load (Water Cleanup Plan): Submittal Report (Ecology publication)
www.ecy.wa.gov/biblio/0510041.html

Wilson Creek Sub-basin Bacteria Total

Maximum Daily Load Detailed
Implementation Plan (Ecology publication)
www.ecy.wa.gov/biblio/0610065.html

Related information

Focus on Wilson Creek Sub-basin Bacteria
TMDL (Ecology publication)
www.ecy.wa.gov/biblio/0310022.html

WRIA 39: Upper Yakima Watershed
Information (Environmental Assessment
Program web site)
[www.ecy.wa.gov/apps/watersheds
/wriapages/39.html](http://www.ecy.wa.gov/apps/watersheds/wriapages/39.html)

[Back to top of page](#)

Last updated May 2009

Copyright © Washington State Department of Ecology. See <http://www.ecy.wa.gov/copyright.html>.