

# Kittitas County 2012 Preliminary Budget Narrative

## TREASURER

Department

**Departments Mission:** The mission of the Kittitas County Treasurer's Office is to efficiently and accurately manage the public funds that have been entrusted to our care, with an emphasis on providing all of our customers, whether taxpayers or business partners, a high level of customer service, based on our core values of honesty, integrity, professionalism, accountability and respect.

**Departments Goals:** 2012 continues to show challenging times for Kittitas County, our junior taxing districts and the tax payers. This is in part due to current reduction of investment interest earnings, lack of bank participation, tax payer's ability to pay timely. Our Team goals for the year 2012 are as follows: Continue to invest funds with the Local Government Investment Pool (LGIP), educate the public on process and payment options (credit cards), send out delinquent statements and continue our high quality of service to all customers. With the purchase of the Cashtax LID module, reports server and bond module, the treasurer's office will be able to efficiently bill and collect Cascade Irrigations Local Improvements assessments. In addition, the treasurer's office will see increased revenues due to collections of a per parcel rate of \$4.00. The Cashtax Reports server will minimize staff time by sending the end of the month reports electronically to all of our junior taxing districts and internal offices. The Bond module is designed to track and generate reports electronically, for which has been done long. Also, continue to progressively cross train within divisions and maintain a positive working environment

### **Accomplishments:**

Accomplishments for 2011; this year as well as last year, the Treasurer's Office has been very successful, overcoming staffing challenges, and huge workloads, their dedication and performance are at amazing levels. Their commitment to excellence and customer service is outstanding.

We continue our excellent working relationship with our all of our taxing districts, there are seven school, eight fire, five water, one sewer, two hospital, one cemetery, one irrigation, more than 70 county funds, one PUD, one soil conservation and eight weed districts, to include 5 cities and 45 state funds. We also processed the collects of over 44,000 statements from customers paying their taxes. For Cascade Irrigation this year we created an additional long term debt obligations which gives us a total of 3, on top of their two established tax rolls. We have accomplished as much paperless work process as current technology will allow. Furthermore, we have all county offices on board and trained with the CashTax Suspense module; this has streamlined all revenue deposits

with our office. In addition to the Cashtax Suspense module, we purchased the Cashtax Suspense Disbursement module; we have all of the necessary offices transmitting their disbursements online. We continue to work with the IT department to allow the junior taxing districts access to the counties internet site for retrieval of their General ledger detail and recap reports, whether it be daily or monthly.

The T2 Reet module was installed in 2010 and continues to be a significant amount of daily work load for the staff. The staff is still having to double entry each REETA document into 2 systems, due to TerraScan issues.

**Revenue Issues:**

The office has done an outstanding job collecting delinquent Personal property and mobile homes. We raised fees associated with the collection efforts of Personal property, mobile homes and real/irrigation delinquents. This has assisted to pay an additional 25% towards the Tax Warrant/Personal Property Deputies pay. Investment interest continues to be at a low rate and unpredictable due to the current economy conditions.

**Revenue Increase:**

The office will be requiring Cascade Irrigation and The TV District to reimburse postage usage. Also, Cascade Irrigation will be paying \$4.00 per parcel for each Local Improvement District assessment, in addition to an increase on the water assessment roll of \$ 0.20 making their obligation per parcel rate \$2.25. The TV District will also be paying a flat fee per parcel count \$2.25.

**2011 expenditure issues:**

**1-3151001 Salaries**

Re-fill the position that remains vacant from March of 2009. Justification; increased workload with DOR Reet module, with the current real estate market as is, we are experiencing one staff member 3 hours a day of dedicated project time, this is an unfunded state mandated function. The Treasurer's office is proactively attempting to collect on delinquent personal property and mobile homes taxes. This process is extremely time consuming with the generation of delinquent correspondence, phone calls, research, and documentation of the process. This is a state mandated and revised process within the treasurer office. Also the foreclosure rate has increased 60% this year, I do not anticipate the times changing anytime soon, this increase has and other daily task is making it increasing difficult to keep up with the demands.

Staff salary wage adjustments, anticipated cost of living increase in Union Contract for the period of January 2012 – December 2012, and the Union Employees annual step increases on the anniversary of their position date. See Judy's report.

## **1-3151001 Salaries (con't)**

Pay an additional % from Treasurer's M&O to the Tax Warrant Deputy position, that portion from the General Fund budget pays to the Administrative Assistant position from level II change to level III.

**13153101** Offices supplies;  
Increase of \$300.00 to \$7,600.00 due to toner and paper costs.

**13153561** Small tools/ minor equipment;  
Increase of \$50.00 to \$1,050.00 to purchase new chairs for the staff.

**13154101** Professional Services;  
Decrease of \$24,920.00 move \$1,050.00 to pay for monthly cell phone bill and purchase my Administrative Assistant a cell phone, so she will stop using her personal cell phone for company business, this would also adhere to the Public Disclosure Rules.

**13154809** Computer software maintenance;  
Increased of \$3,000.00 to \$50,500.00 for TerraScan and Cashtax maintenance contracts

**13154905** Printing and Binding;  
Increase of \$7,700.00 to \$14,700.00 due to increase in printing cost, and envelope purchase. We were using the past treasurer's envelopes; this year we depleted our supplies in-house as well as at the printers.

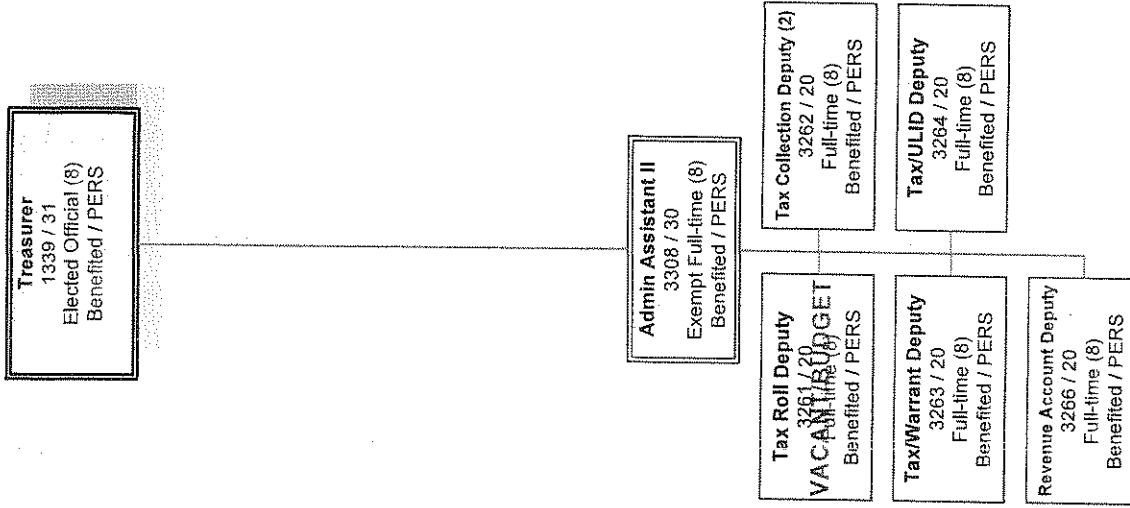
**13154809** Computer software;  
Increase of \$5,000.00 to \$20,000.00 to purchase a check remitter and electronic envelope opener.

### New line items

**13154127** Contracted Shredding  
\$200.00 moved from Professional Services

**13154201** Cellular phone communications  
\$1,050.00 moved from Professional Services

# 003: - Treasurer's Office Organizational Chart



Updated 10/12/2010

January 1,2011 through December 31,2011

Transaction status 1  
Rounding to Whole Dollars

Fnd 001 GENERAL FUND

	2010 ACTUAL	2011 AMENDE BUDGET	2011 ACTUAL	2012 DEPT 2012 PRELIM2012 ADJUST 2012 ADDL 2012 PRELIM % ADDITIONAL REDUCTION REDUCTION BUDGET	
Dpt 0031					
SAC 31110	5,974,456	6,519,786	4,825,808	5,884,786	6,244,530- 4.4-
SAC 31120	79,786	200,000	139,429	200,000	200,000-
SAC 31210	3,683		3,582		
SAC 31310	2,738,914	2,600,000	1,584,514	2,600,000	2,600,000-
SAC 31720	11,919	15,000	14,704	15,000	15,000-
SAC 31731	4,900	4,000	3,870	4,000	4,000-
SAC 31910	648,759	405,000	1,697,008	450,000	450,000- 10.0
SAC 31912	26,761	10,000	27,934	10,000	10,000-
SAC 31916	2,106		1,845		
SAC 33215	775,305	548,815	825,186	630,045	630,045- 12.9
SAC 33400	53,669				
SAC 33500	250,568	231,300	216,489	215,000	215,000- 7.6-
SAC 33602	31,333	30,000	31,354	30,000	30,000-
SAC 33606	95,577	79,000	70,005	82,000	82,000- 3.7
SAC 33700	824	385		350	350- 10.0-
SAC 34141	4,700				
SAC 34142	56,837	35,000	44,851	45,000	45,000- 22.2
SAC 34160	78	75	9		
SAC 34175			3		
SAC 34914	19				
SAC 36111	136,059	50,000	36,547	15,000	15,000- 233.3-
SAC 36119	4,495	3,500	3,465	3,500	3,500-
SAC 36140	8,342	10,000	2,539	2,500	2,500- 300.0-
SAC 36190	26				
SAC 36920	2,530				
SAC 36981	410		50		
SAC 36990	222	500	2,092	1,500	1,500- 66.7
Dpt 0031	10,906,800	10,742,361	9,527,495	10,188,681	10,548,425- 1.8-

January 1, 2011 through December 31, 2011

Transaction status 1  
Rounding to Whole Dollars

2010 2011 AMENDE 2011 2012 DEPT 2012 PRELIM2012 ADJUST 2012 ADDL 2012 PRELIM %  
ACTUAL BUDGET ACTUAL ADDITIONAL REDUCTION REDUCTION BUDGET

Fnd 001	GENERAL FUND	2010 ACTUAL	2011 BUDGET	2011 ACTUAL	2012 DEPT	2012 PRELIM	2012 ADJUST	2012 ADDL	2012 PRELIM %
Sub 001	GENERAL FUND								
Dpt 0031	TREASURER								
BAC 311	GENERAL PROPERTY T								
1 3131110	REAL & PERSONA	5,974,456-	5,884,786-	4,708,336-	5,884,786-				5,884,786-
1 3131120	DIVERTED COUNT	79,786-	200,000-	135,961-	200,000-				200,000-
1 3131110010	PROPERTY TAX S		635,000-						
BAC 311	GENERAL PROPERTY T	6,054,242-	6,719,786-	4,844,297-	6,084,786-				6,084,786-
BAC 312	TIMBER HARVEST TAX								
1 3131210	TIMBER HARVEST	3,683-		3,582-					
BAC 312	TIMBER HARVEST TAX								
1 3131310	RETAIL SALES AND U								
BAC 313	LOCAL RETAIL S	2,738,914-	2,600,000-	1,584,514-	2,600,000-				2,600,000-
BAC 313	RETAIL SALES AND U	2,738,914-	2,600,000-	1,584,514-	2,600,000-				2,600,000-
BAC 317	EXCISE TAXES								
1 3131720	LEASEHOLD EXCI	11,919-	15,000-	14,704-	15,000-				15,000-
1 3131731	RE EXCISE TAX-	4,900-	4,000-	3,790-	4,000-				4,000-
BAC 317	EXCISE TAXES	16,819-	19,000-	18,494-	19,000-				19,000-
BAC 319	PENALTIES & INT. O								
1 3131910	DEL INT ON REA	648,759-	405,000-	1,691,892-	450,000-				450,000-
1 3131912	PENALTY LIST P	26,761-	10,000-	27,430-	10,000-				10,000-
1 313191601	INTEREST REFUN	2,106		1,810					
BAC 319	PENALTIES & INT. O	673,414-	415,000-	1,717,513-	460,000-				460,000-
BAC 332	FEDERAL ENTITLEMEN								
1 3133215230	BUREAU OF LAND	775,305-	548,815-	825,186-	630,045-				630,045-
BAC 332	FEDERAL ENTITLEMEN	775,305-	548,815-	825,186-	630,045-				630,045-
BAC 334	STATE GRANTS								
1 3133400901	DOR - REET GRA	53,669-							
BAC 334	STATE GRANTS	53,669-							

JMP - PRELIMINARY DEPT REVENUE

January 1, 2011 through December 31, 2011

Transaction status 1  
Rounding to Whole Dollars

2012 PRELIM2012 ADJUST 2012 DEPT 2012 PRELIM2012 ADDL 2012 PRELIM %  
ADDITIONAL REDUCTION REDUCTION REDUCTION BUDGET

Fnd 001	GENERAL FUND	2010	2011	2012 DEPT	2012 PRELIM2012	2012 PRELIM2012	2012 PRELIM2012	2012 PRELIM2012
Sub 001	GENERAL FUND	ACTUAL	BUDGET	ACTUAL	ADDITIONAL REDUCTION	REDUCTION	REDUCTION	BUDGET
Dpt 0031	TREASURER							
BAC 335	STATE SHARED REVEN							
1 3133500910	PUD PRIVILEGE	250,568-	231,300-	216,489-	215,000-		215,000-	7.6-
BAC 335	STATE SHARED REVEN	250,568-	231,300-	216,489-	215,000-		215,000-	7.6-
BAC 336	STATE ENTITLEMENTS							
1 313360251	IN LIEU TAX FI	31,333-	30,000-	31,354-	30,000-		30,000-	
1 3133606940	LIQUOR EXCISE	33,015-	31,000-	25,565-	32,000-		32,000-	3.1
1 3133606950	LIQUOR BOARD P	62,562-	48,000-	44,441-	50,000-		50,000-	4.0
BAC 336	STATE ENTITLEMENTS	126,910-	109,000-	101,359-	112,000-		112,000-	2.7
BAC 337	INTERLOCAL GRANTS,							
1 3133700	PAYMENT IN LIE	824-	385-		350-		350-	10.0-
BAC 337	INTERLOCAL GRANTS,	824-	385-		350-		350-	10.0-
BAC 341	GENERAL GOVERNMENT							
1 3134142	TREASURER FEES	13,922-	10,000-	15,218-	15,000-		15,000-	33.3
1 3134160	SALE OF PHOTOC	78-	75-	9-				
1 313414250	TREASURER REET	36,547-	25,000-	23,498-	25,000-		25,000-	
1 313417501	PUBLIC DISCLOS			3-				
1 3134141010	OPEN SPACE PRO	4,500-						
1 3134141020	FOREST DESIGNA	200-						
1 3134142014	TREASURER DNR	6,367-		5,211-	5,000-		5,000-	100.0
BAC 341	GENERAL GOVERNMENT	61,615-	35,075-	43,937-	45,000-		45,000-	22.1
BAC 349	OTHER INTERFUND CH							
1 3134914	INTERFUND ACCO	19-						
BAC 349	OTHER INTERFUND CH	19-						
BAC 361	INTEREST EARNINGS							
1 3136111	INVESTMENT INT	136,059-	50,000-	36,547-	15,000-		15,000-	233.3-
1 3136119	INVESTMENT SER	4,495-	3,500-	3,465-	3,500-		3,500-	
1 3136140	INTEREST ON RE	8,342-	10,000-	2,539-	2,500-		2,500-	300.0-
1 3136190	OTHER INTEREST	26-						
BAC 361	INTEREST EARNINGS	148,922-	63,500-	42,551-	21,000-		21,000-	202.4-

JMP - PRELIMINARY DEPT REVENUE

Report Format 562

January 1, 2011 through December 31, 2011

Transaction Status 1  
Rounding to Whole Dollars

2010 2011 AMENDE 2011 2012 DEPT 2012 PRELIM2012 ADJUST 2012 ADDL 2012 PRELIM %  
ACTUAL BUDGET ACTUAL ADDITIONAL REDUCTION REDUCTION BUDGET

Fnd 001	GENERAL FUND	2010 ACTUAL	2011 BUDGET	2011 ACTUAL	2012 DEPT	2012 PRELIM	2012 ADDL	2012 PRELIM %
Sub 001	GENERAL FUND							
Dpt 0031	TREASURER							
BAC 369	OTHER MISCELLANEOU							
1 3136920	UNCLAIMED PROP	2,530-						
1 3136981	OVER & SHORT	410		50				
1 3136990	MISCELLANEOUS	1,092		12-				
1 313699060	NSF CHECK SERV	870-	500-	2,080-	1,500-			1,500- 66.7
BAC 369	OTHER MISCELLANEOU	1,898-	500-	2,042-	1,500-			1,500- 66.7
Dpt 0031	TREASURER	10,906,800-	10,742,361-	9,399,965-	10,188,681-			10,188,681- 5.4-
	Report Final Totals	10,906,800-	10,742,361-	9,399,965-	10,188,681-			10,188,681- 5.4-

January 1,2011 through December 31,2011

Transaction status 1  
Rounding to Whole Dollars

Fnd 001 GENERAL FUND

	2010 ACTUAL	2011 AMENDE BUDGET	2011 ACTUAL	2012 DEPT EXP	2012 PRELIM2012 ADJUST ADDITIONAL REDUCTION	2012 PRELIM % BUDGET
Dpt 0031						
Sob 1001	229,038	232,932	174,946	240,659		240,659
Sob 1002	3,159	1,500	449	1,500		1,500
Sob 1004	6,201					
Sob 2001	17,655	17,935	12,857	18,525		18,525
Sob 2002	1,400	1,756	1,205	1,889		1,889
Sob 2003	12,334	16,448	10,391	20,039		20,039
Sob 2004	49,894	52,689	38,739	54,600		54,600
Sob 2006	1,090	748	559	1,136		1,136
Sob 3101	6,745	7,300	6,858	7,600		7,600
Sob 3561	1,129	1,000	342	1,050		1,050
Sob 3564	53,273	625		625		625
Sob 4101	13,505	16,049	4,399	24,920		24,920
Sob 4109	70			700		700
Sob 4112	36,407	40,446	1,131	40,000		40,000
Sob 4127	12	200	147	200		200
Sob 4201	1,309	1,685	1,217	1,685		1,685
Sob 4202	10-	8,150	8,133	50		50 *****
Sob 4204			278			
Sob 4301		1,600	524	1,600		1,600
Sob 4401	260	264	263	239		239
Sob 4602	750	750	750	750		750
Sob 4803	1,454	2,000	2,020	2,000		2,000
Sob 4809	44,770	47,500	44,770	50,500		50,500
Sob 4902	229	400	132	400		400
Sob 4904		500	63	500		500
Sob 4905	4,687	8,050	3,631	14,700		14,700
Sob 4906	524	1,500	675	1,500		1,500
Sob 5301	68	100	97	97		97
Sob 6404		15,000	15,000	20,000		20,000
Sob 7501	4,704	5,540	3,920	5,540		5,540
Sob 9201	155	415	70	415		415
Sob 9202	2,638	4,000	3,036	4,000		4,000
Sob 9301			6			
Dpt 0031	493,449	487,782	336,609	517,419		517,419
TREASURER						5.7

11/10/ 7:57

KITTITAS COUNTY F 011

October 11 2011 age: 1

GL787

JMP - PRELIMINARY DEPT EXPENSE

Report Format 562

January 1, 2011 through December 31, 2011

Transaction status 1  
Rounding to Whole Dollars

Fnd 001	GENERAL FUND	Sub 001	GENERAL FUND	2010	2011 AMENDE	2011	2012 DEPT	2012 PRELIM	2012 ADDL	2012 PRELIM	%
Dpt 0031	TREASURER	Div 001	DOR REET	ACTUAL	BUDGET	ACTUAL	ADDITIONAL	REDUCTION	REDUCTION	BUDGET	
Obj 535	SMALL TOOLS/MINOR EQUI										
1 310153563	MINOR COMPUTER			53,273							
Obj 535	SMALL TOOLS/MINOR EQUI			53,273							
Div 001	DOR REET			53,273							

GL787

JMP - PRELIMINARY DEPT EXPENSE

Report Format 562

January 1, 2011 through December 31, 2011

Transaction status 1  
Rounding to Whole Dollars

Fnd 001	GENERAL FUND	Sub 001	GENERAL FUND	2010	2011	2012 DEPT	2012 ADDL	2012 PRELIM	%
Dpt 0031	TREASURER			ACTUAL	AMENDE	BUDGET	ACTUAL	ADDITIONAL	REDUCTION
								REDUCTION	BUDGET
Obj 510	SALARIES AND WAGES			229,038	232,932	174,946	240,659		3.2
1 3151001	SALARIES			3,159	1,500	1,500	240,659		
1 3151002	OVERTIME			6,201			1,500		
1 3151004	VACATION PAYOF								
Obj 510	SALARIES AND WAGES			238,398	234,432	175,395	242,159		3.2
Obj 520	PERSONNEL BENEFITS			17,655	17,935	12,857	18,525		3.2
1 3152001	FICA			1,400	1,756	1,205	1,889		7.0
1 3152002	MEDICAL AID/LA			12,334	16,448	10,391	20,039		17.9
1 3152003	RETIREMENT			49,894	52,689	38,739	54,600		3.5
1 3152004	MEDICAL BENEFI			1,090	748	559	1,136		34.1
1 3152006	UNEMPLOYMENT								
Obj 520	PERSONNEL BENEFITS			82,373	89,576	63,751	96,189		6.9
Obj 531	OFFICE AND OPERATING S			6,745	7,300	6,858	7,600		4.0
1 3153101	OFFICE SUPPLIE								
Obj 531	OFFICE AND OPERATING S			6,745	7,300	6,858	7,600		4.0
Obj 535	SMALL TOOLS/MINOR EQUI			1,129	1,000	342	1,050		4.8
1 3153561	MINOR SMALL OF			625	625		625		
1 3153563	MINOR COMPUTER			700	700		700		
1 3153564	MINOR COMPUTER								
Obj 535	SMALL TOOLS/MINOR EQUI			1,129	2,325	342	2,375		2.1
Obj 541	PROFESSIONAL SERVICES			13,505	16,049	4,399	24,920		35.6
1 3154101	PROFESSIONAL S			70					
1 3154109	PENALTIES & AS			36,407	40,446	1,131	40,000		1.1-
1 3154112	BANKING FEES			12	200	147	200		200
1 3154127	CONTRACTED SHR								
Obj 541	PROFESSIONAL SERVICES			49,993	56,695	5,677	65,120		12.9
Obj 542	COMMUNICATIONS			1,309	1,685	1,217	1,685		
1 3154201	TELEPHONE			10-	8,150	8,133	50		50 *****
1 3154202	POSTAGE								
1 3154204	CELLULAR PHONE					193			
Obj 542	COMMUNICATIONS			1,299	9,835	9,543	1,735		466.9-

Fnd 001	GENERAL FUND	Sub 001	GENERAL FUND	2010	2011	2012 DEPT	2012 ADDL	ADDITIONAL	REDUCTION	REDUCTION	BUDGET	%
Dpt 0031	TREASURER			ACTUAL	AMENDE	2012 DEPT	2012 ADDL	ADDITIONAL	REDUCTION	REDUCTION	BUDGET	%
					BUDGET	2012 DEPT	2012 ADDL	ADDITIONAL	REDUCTION	REDUCTION	BUDGET	%
					ACTUAL	2012 DEPT	2012 ADDL	ADDITIONAL	REDUCTION	REDUCTION	BUDGET	%
Obj 543	TRAVEL											
1 3154301	TRAVEL				1,600	524	1,600				1,600	
Obj 543	TRAVEL				1,600	524	1,600				1,600	
Obj 544	ADVERTISING											
1 3154401	ADVERTISING				260	263	239				239	10.5-
Obj 544	ADVERTISING				260	263	239				239	10.5-
Obj 546	INSURANCE AND BONDS											
1 3154602	BONDS				750	750	750				750	
Obj 546	INSURANCE AND BONDS				750	750	750				750	
Obj 548	REPAIRS & MAINTENANCE											
1 3154803	EQUIPMENT REPA				1,454	2,000	2,000				2,000	
1 3154809	COMPUTER SOFTW				44,770	44,770	50,500				50,500	5.9
Obj 548	REPAIRS & MAINTENANCE				46,224	49,500	52,500				52,500	5.7
Obj 549	MISCELLANEOUS											
1 3154902	DUES & SUBSCRI				229	400	400				400	
1 3154904	FILING & RECOR				500	63	500				500	
1 3154905	PRINTING & BIN				4,687	3,631	14,700				14,700	45.2
1 3154906	REGISTRATION/T				524	1,500	1,500				1,500	
Obj 549	MISCELLANEOUS				5,440	10,450	17,100				17,100	38.9
Obj 553	TAXES & OPERATING ASSE											
1 3155301	INTERGOVT TAXE				68	100	97				97	3.1-
Obj 553	TAXES & OPERATING ASSE				68	100	97				97	3.1-
Obj 564	EQUIPMENT											
1 3156404	COMPUTER SOFTW				15,000	15,000	20,000				20,000	25.0
Obj 564	EQUIPMENT				15,000	15,000	20,000				20,000	25.0
Obj 575	CAPITAL LEASES/INSTALL											
1 3157501	CAPITAL LEASES				4,704	5,540	5,540				5,540	
Obj 575	CAPITAL LEASES/INSTALL				4,704	5,540	5,540				5,540	

GL787

JMP - PRELIMINARY DEPT EXPENSE

Report Format 562

January 1,2011 through December 31,2011

Transaction status 1  
Rounding to Whole Dollars

Fnd 001 GENERAL FUND		Sub 001 GENERAL FUND		2010		2011		2012		2012		2012		2012	
Dpt 0031 TREASURER				ACTUAL	BUDGET	AMENDE	ACTUAL	BUDGET	DEPT	DEPT	ADJUST	ADJUST	ADJUST	ADJUST	ADJUST
Obj 592	INTERFUND COMMUNICATIO														
1 3159201	INTERFUND TELE	155	415	70	415										415
1 3159202	INTERFUND POST	2,638	4,000	3,036	4,000										4,000
Obj 592	INTERFUND COMMUNICATIO	2,793	4,415	3,107	4,415										4,415
Obj 593	INTERFUND SUPPLIES														
1 3159301	INTERFUND COPI														
Obj 593	INTERFUND SUPPLIES														
Dpt 0031	TREASURER	493,449	487,782	336,115	517,419										517,419
Sub 001	GENERAL FUND	493,449	487,782	336,115	517,419										517,419
Fnd 001	GENERAL FUND	493,449	487,782	336,115	517,419										517,419
	Report Final Totals	493,449	487,782	336,115	517,419										517,419

January 1,2011 through December 31,2011

Transaction status 1  
Rounding to Whole Dollars

2010 2011 AMENDE 2011 2012 DEPT 2012 PRELIM2012 ADJUST 2012 ADDL 2012 PRELIM %  
ACTUAL BUDGET ACTUAL ADDITIONAL REDUCTION REDUCTION BUDGET

Fnd 001	GENERAL FUND	2010 ACTUAL	2011 BUDGET	2011 AMENDE ACTUAL	2012 DEPT BUDGET	2012 PRELIM ADDITIONAL REDUCTION	2012 ADJUST REDUCTION	2012 ADDL PRELIM BUDGET	2012 PRELIM %
Sub 001	GENERAL FUND								
Dpt 0031	TREASURER								
BAC 311	GENERAL PROPERTY T								
1 3131110	REAL & PERSONA	5,974,456	5,884,786	4,852,453	5,884,786	359,744		6,244,530	5.8
1 3131120	DIVERTED COUNT	79,786	200,000	140,373	200,000			200,000	
1 3131110010	PROPERTY TAX S		635,000						
BAC 311	GENERAL PROPERTY T	6,054,242	6,719,786	4,992,826	6,084,786	359,744		6,444,530	4.3
BAC 312	TIMBER HARVEST TAX								
1 3131210	TIMBER HARVEST	3,683		3,582					
BAC 312	TIMBER HARVEST TAX								
1 3131310	RETAIL SALES AND U								
1 3131310	LOCAL RETAIL S	2,738,914	2,600,000	1,584,514	2,600,000			2,600,000	
BAC 313	RETAIL SALES AND U	2,738,914	2,600,000	1,584,514	2,600,000			2,600,000	
BAC 317	EXCISE TAXES								
1 3131720	LEASEHOLD EXCI	11,919	15,000	14,704	15,000			15,000	
1 3131731	RE EXCISE TAX	4,900	4,000	3,900	4,000			4,000	
BAC 317	EXCISE TAXES	16,819	19,000	18,604	19,000			19,000	
BAC 319	PENALTIES & INT. O								
1 3131910	DEL INT ON REA	648,759	405,000	1,699,565	450,000			450,000	10.0
1 3131912	PENALTY LIST P	26,761	10,000	27,945	10,000			10,000	
1 313191601	INTEREST REFUN	2,106		1,853					
BAC 319	PENALTIES & INT. O	673,414	415,000	1,725,657	460,000			460,000	9.8
BAC 332	FEDERAL ENTITLEMEN								
1 3133215230	BUREAU OF LAND	775,305	548,815	825,186	630,045			630,045	12.9
BAC 332	FEDERAL ENTITLEMEN	775,305	548,815	825,186	630,045			630,045	12.9
BAC 334	STATE GRANTS								
1 3133400901	DOR - REET GRA	53,669							
BAC 334	STATE GRANTS	53,669							

JMP - PRELIMINARY DEPT REVENUE

Report Format 562

January 1,2011 through December 31,2011

Transaction status 1  
Rounding to Whole Dollars

2010 ACTUAL 2011 AMENDE BUDGET 2011 ACTUAL 2012 DEPT 2012 PRELIM2012 ADJUST 2012 ADDL 2012 PRELIM %  
ADDITIONAL REDUCTION REDUCTION BUDGET

Fnd 001	GENERAL FUND	2010 ACTUAL	2011 AMENDE BUDGET	2011 ACTUAL	2012 DEPT	2012 PRELIM2012 ADJUST	2012 ADDL	2012 PRELIM %
Sub 001	GENERAL FUND							
Dpt 0031	TREASURER							
EAC 335	STATE SHARED REVEN							
1 3133500910	PUD PRIVILEGE	250,568-	231,300-	216,489-	215,000-			215,000- 7.6-
BAC 335	STATE SHARED REVEN	250,568-	231,300-	216,489-	215,000-			215,000- 7.6-
BAC 336	STATE ENTITLEMENTS							
1 313360251	IN LIQU TAX FI	31,333-	30,000-	31,354-	30,000-			30,000-
1 3133606940	LIQUOR EXCISE	33,015-	31,000-	25,565-	32,000-			32,000-
1 3133606950	LIQUOR BOARD P	62,562-	48,000-	44,441-	50,000-			50,000- 4.0
BAC 336	STATE ENTITLEMENTS	126,910-	109,000-	101,359-	112,000-			112,000- 2.7
BAC 337	INTERLOCAL GRANTS,							
1 3133700	PAYMENT IN LIE	824-	385-		350-			350- 10.0-
BAC 337	INTERLOCAL GRANTS,	824-	385-		350-			350- 10.0-
BAC 341	GENERAL GOVERNMENT							
1 3134142	TREASURER FEES	13,922-	10,000-	15,293-	15,000-			15,000- 33.3
1 3134160	SALE OF PHOTOC	78-	75-	9-				
1 313414250	TREASURER REET	36,547-	25,000-	24,297-	25,000-			25,000-
1 313417501	PUBLIC DISCLOS			3-				
1 3134141010	OPEN SPACE PRO	4,500-						
1 3134141020	FOREST DESIGNA	200-						
1 3134142014	TREASURER DNR	6,367-		5,341-	5,000-			5,000- 100.0
BAC 341	GENERAL GOVERNMENT	61,615-	35,075-	44,942-	45,000-			45,000- 22.1
BAC 349	OTHER INTERFUND CH							
1 3134914	INTERFUND ACCO	19-						
BAC 349	OTHER INTERFUND CH	19-						
BAC 361	INTEREST EARNINGS							
1 3136111	INTEREST EARNINGS	136,059-	50,000-	36,547-	15,000-			15,000- 233.3-
1 3136119	INVESTMENT INT	4,495-	3,500-	3,465-	3,500-			3,500-
1 3136140	INTEREST ON RE	8,342-	10,000-	2,539-	2,500-			2,500- 300.0-
1 3136190	OTHER INTEREST	26-						
BAC 361	INTEREST EARNINGS	148,922-	63,500-	42,551-	21,000-			21,000- 202.4-

